



# Google Pixel 3a XL Midframe Replacement

Pre-req only guide for Pixel 3a XL midframe removal.

Written By: Taylor Dixon



---

## INTRODUCTION

This guide is a pre-requisite step for other Pixel 3a XL guides. It describes the process of removing the midframe between the screen and the rest of the phone's internals.

---

### TOOLS:

- [T3 Torx Screwdriver](#) (1)
  - [iFixit Opening Picks set of 6](#) (1)
-

## Step 1 — Midframe



- Remove the following screws:

- 13 silver T3 screws

- 2 black T3 screws

**i** These screws are each 4.3 mm long, but it is still a good idea to keep track of them and make sure they each go back into their respective holes during reassembly.

## Step 2



**i** The midframe is still held in place by plastic clips.

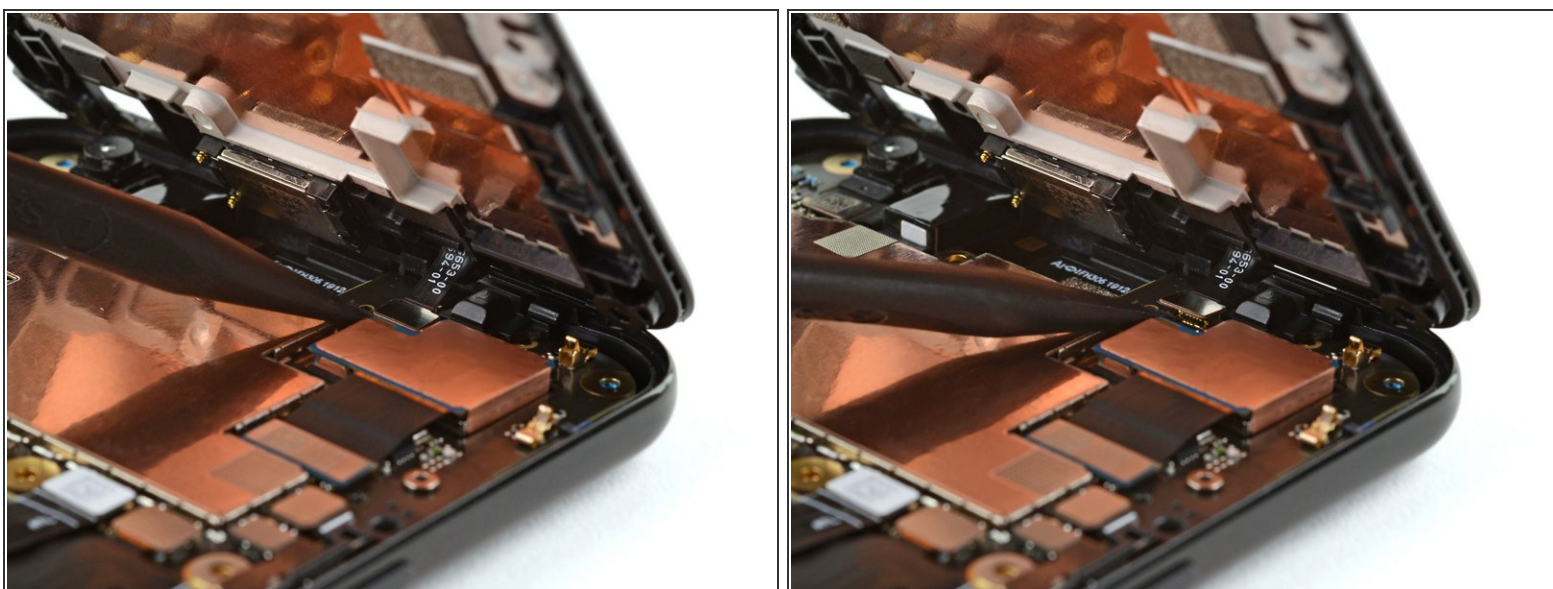
- Insert an opening pick into the seam along the bottom of the phone.
- Slide the pick along the seam to release the clips holding the midframe to the rest of the phone.

## Step 3



- Slide the opening pick along the left and right edges of the phone to release the midframe clips there.
- ① Once the clips along the bottom of the phone are separated, the flat edge of the opening pick should be enough to separate the rest of the clips.
- Lift up the bottom edge of the midframe but **don't completely remove it yet**. The midframe is still connected to the phone by a fragile cable.

## Step 4



- Use a spudger to pry up and detach the proximity sensor cable from the motherboard.

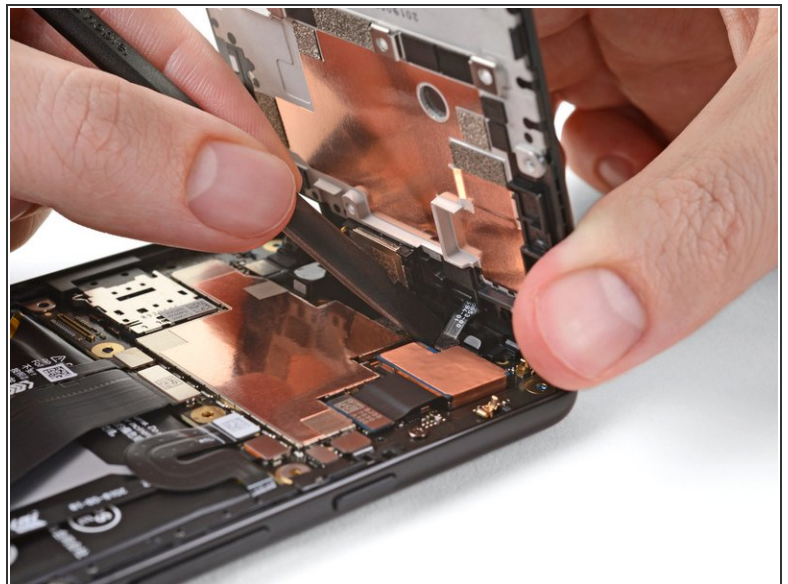


## Step 5



- Remove the midframe from the phone.

## Step 6



- ☑ During reassembly, align the top edge of the midframe with the top of the phone, then use a spudger to carefully press the proximity sensor cable connector onto its socket.
- This takes a bit of patience and finesse. Once you have the connector aligned, you can also use a finger to gently press the connector onto the socket.

To reassemble your device, follow these instructions in reverse order.