



Google Pixel 3a XL Screen Replacement

This guide will show you how to remove or replace the OLED screen of a Google Pixel 3a XL.

Written By: Taylor Dixon



INTRODUCTION

Follow this guide to replace a cracked or broken Pixel 3a XL screen, or to get inside the phone and replace a different component.

The OLED display under the glass of the 3a XL screen is fragile—if you plan to re-use your screen after you remove it from your phone, take extra care and follow the directions of this guide closely.



TOOLS:

- [iOpener](#) (1)
- [Suction Handle](#) (1)
- [iFixit Opening Picks set of 6](#) (1)
- [Tweezers](#) (1)
- [Spudger](#) (1)
- [T3 Torx Screwdriver](#) (1)



PARTS:

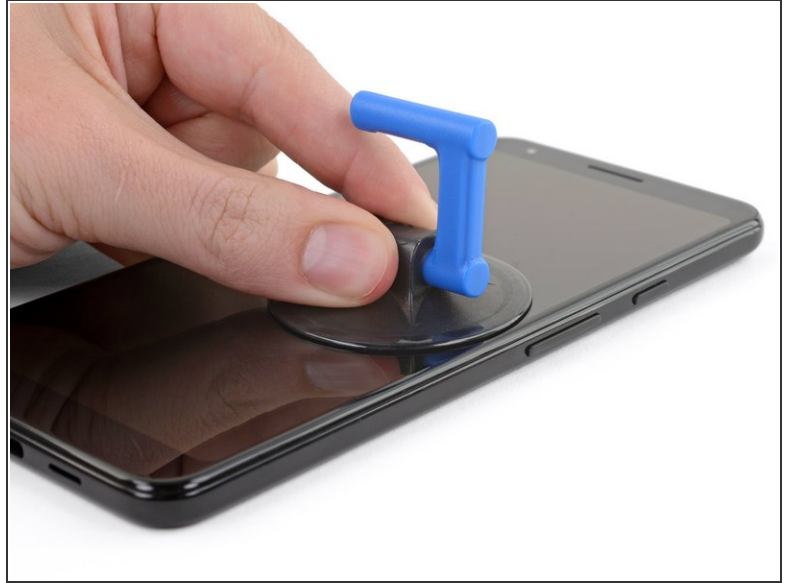
- [Google Pixel 3a XL Screen](#) (1)
- [Google Pixel 3a XL Display Adhesive](#) (1)

Step 1 — Screen



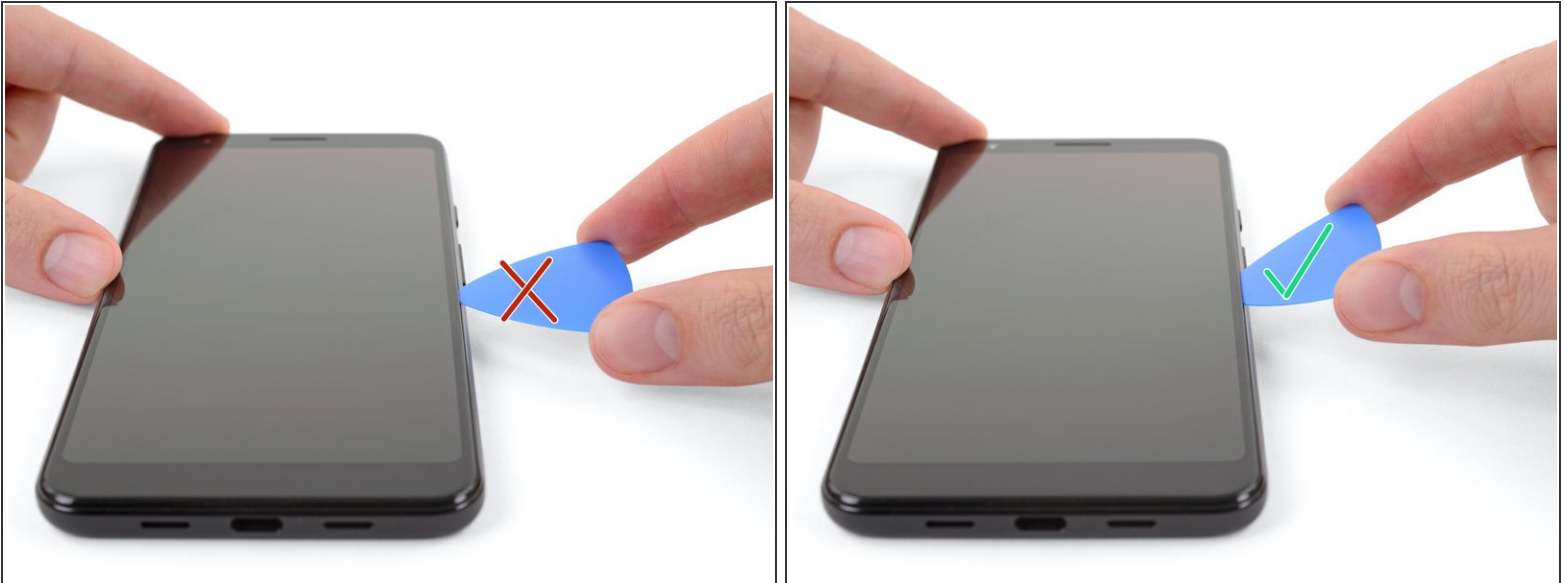
- i** In the following steps, you will be removing the Pixel 3a's screen by cutting through the adhesive holding it in place.
- For reference, the backside of the screen is shown in this step.
 - Note the narrow clearance between the edge of the screen and the OLED panel under the glass. If you plan to re-use your screen, be sure to follow the instructions below closely.
 - Also note the two different seams between the body of the phone and the screen:
 - The *screen seam*: where the screen meets the rest of the phone. **This is where the screen will separate, and where you should pry.**
 - The *midframe seam*: where the midframe meets the body of the phone. This part is held down by screws. **Do not pry at this seam.**

Step 2



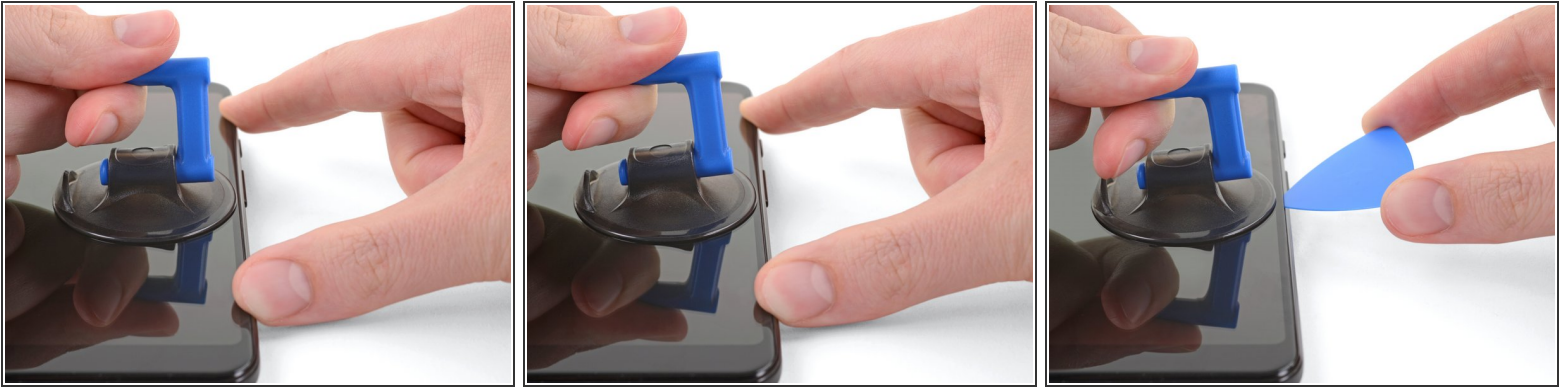
- Place a suction cup on the right edge of the screen, just below the volume button.


Step 3



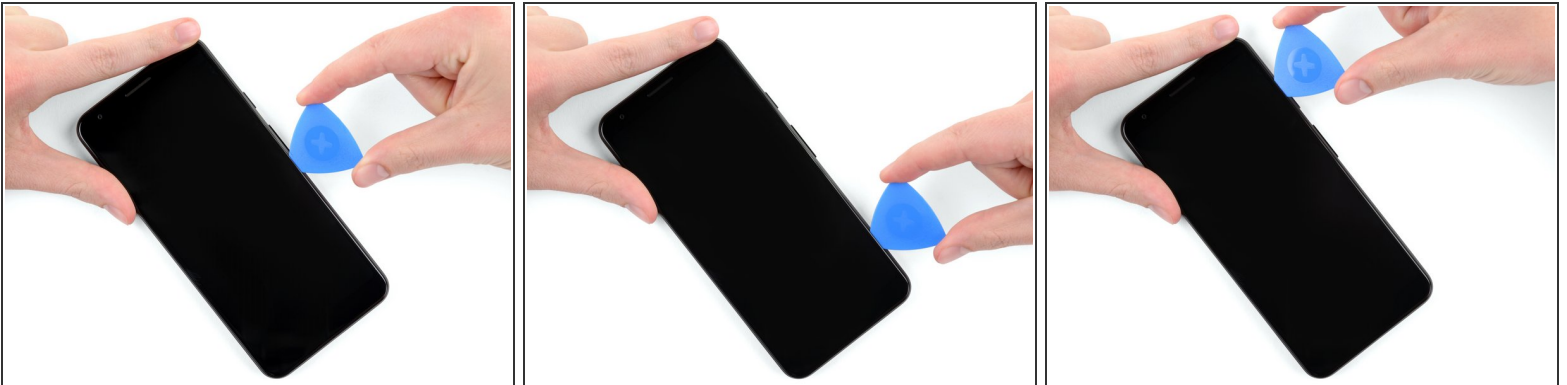
- i** In the next step you will insert an opening pick between the screen and the plastic body of the phone.
- If you aren't careful, the plastic opening tool can damage the fragile OLED display panel underneath the glass.
 - **If you want to re-use your phone's screen, make sure you insert your pick at a downward angle, as shown in the second photo of this step.**
 - This will ensure the opening pick slides *under* the OLED panel rather than *between* the glass and the panel, which will ruin the screen.

Step 4



- Pull up on the suction cup with a strong, steady force to create a gap between the screen and the phone.
 - Insert your opening pick into the gap.
 - **Stop if you feel the tip of the pick hitting against something.** The pick may be pressing against the edge of the OLED panel. Angle the pick downward and try again.
-  Once you have inserted an opening pick, you can remove the suction cup.

Step 5



- Once the pick is inserted, slide it up and down along the right edge of the phone to cut through the adhesive holding the screen in place.

Step 6



- i** The adhesive holding the top and bottom edges of the screen in place is thicker, and considerably stronger than the thin strips holding the sides in place.
- If you plan to reuse your screen, heat up the top edge of the phone with an [iOpener](#), a heat gun, or a hair dryer to loosen the adhesive there before you begin slicing.

Step 7



- Carefully slide your opening pick around the upper-right-hand corner of the screen.
- i** As shown in [step one](#), the gap between the display and the edge of the glass screen is larger here than on the sides.
- If you plan to reuse your screen, take special care in this step to either **keep your pick deep in the phone under the OLED display** (as shown in this step's photos), or **only insert it 5 mm into the device** to avoid coming into contact with the display under the glass.

Step 8



- Continue to separate the adhesive along the top edge of the display.
- ⓘ As you slice along this edge, you may bump into the [camera and proximity sensor](#) housed here. Don't pry aggressively, just work around them.

Step 9



- Slide your opening pick down the left side of the phone to separate the adhesive there.

Step 10



- i** The adhesive holding the bottom edge of the screen in place is **thicker, and considerably stronger than the thin strips holding the sides in place.**
- If you plan to reuse your screen, heat up the bottom edge of the phone with an [iOpener](#), a heat gun, or a hair dryer to loosen the adhesive there before you begin slicing.

Step 11




- Slide your opening pick along the bottom edge of the phone to separate the last of the adhesive holding the screen in place.
- i** As shown in [step one](#), the gap between the display and the edge of the screen is larger here than on the sides.
- If you plan to reuse your screen, take special care in this step to either **keep your pick deep in the phone under the OLED display** (as shown in this step's photos), or **only insert it 5 mm into the device** to avoid coming into contact with the display under the glass.
- **Don't try to remove the screen yet!** It is still connected to the phone by a display cable.

This document was generated on 2020-02-24 10:21:53 AM (MST).

Step 12




- Lift the screen by its top edge (where the front-facing camera is) and carefully flip it 180° so that the screen is resting face-down on the phone.

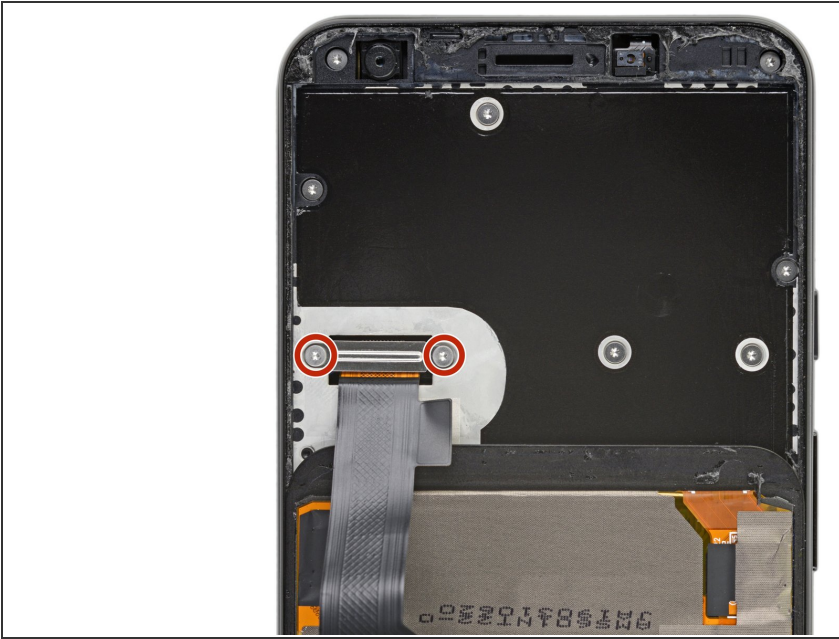
 If you plan to reuse your screen, be careful not to stress the display cable during this step.

Step 13



- Use tweezers to remove the black sticker covering the display cable bracket.
-  If the sticker is in good condition, you can reuse it during reassembly. Otherwise, you can replace it with a piece of electrical tape.

Step 14



- Remove the two T3 screws holding the display cable bracket in place.
- ☑ These screws are both 4.3 mm long, but it is still a good idea to keep track of them and make sure they each go in their respective holes during reassembly.

Step 15



- Remove the display cable bracket.
- Pry up on the cable connector with the pointy end of a spudger to disconnect the screen from the phone.
- ⓘ When you disconnect connectors like these, be careful not to dislodge the small surface-mounted components surrounding the socket.
- ☑ To re-attach [press connectors](#) like this one, carefully align and press down on one side until it clicks into place, then repeat on the other side. Do not press down on the middle. If the connector is misaligned, the pins can bend, causing permanent damage.

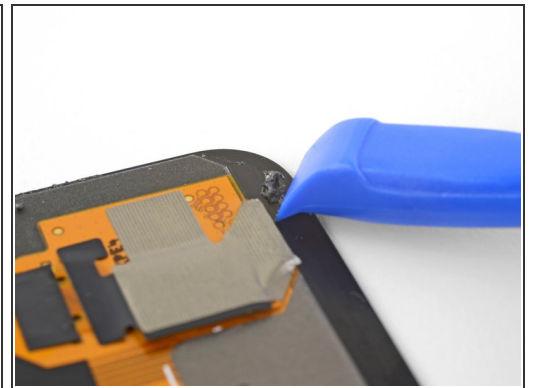
This document was generated on 2020-02-24 10:21:53 AM (MST).

Step 16



- Remove the screen from the phone.

Step 17



To reinstall the screen:

- Use tweezers or an opening tool to remove all traces of adhesive from the phone frame. You can use high concentration isopropyl alcohol to help with the cleaning.
- If you plan to re-use the screen, be sure to remove all adhesive residue from the screen. **Be careful with metal tools to avoid scratching the screen.**
- Apply pre-cut adhesive or double-sided tape (such as [Tesa tape](#)) to re-attach the screen to the frame.

If your Pixel won't turn on after replacing the screen, there is a chance that the phone has silently turned on when the battery is re-connected. Hold the power button for a few seconds until the phone vibrates off. Afterwards, re-connect the screen, and try again.

To reassemble your device, follow these instructions in reverse order.

Take your e-waste to an [R2 or e-Stewards certified recycler](#).

Repair didn't go as planned? Check out our [Google Pixel 3a XL Answers community](#) for troubleshooting help.