



Google Pixel Battery Replacement

Follow this guide to replace an aging Google Pixel battery.

Written By: Taylor Dixon



INTRODUCTION

Use this guide to replace the battery in your Google Pixel. With daily use, a typical battery will last around 18-24 months before losing significant capacity. If your phone has to be recharged constantly or turns off suddenly, replacing the battery may be a solution.

Warning: Because of the strong adhesive securing the display, minimal clearance for inserting your tools, and high heat required, **there is a good chance of accidentally damaging your display during this procedure.** Unless you plan to replace your display in conjunction with this repair, work very carefully and be prepared to replace the display, should it not work upon reassembly. Follow the instructions carefully and observe all warnings to increase your odds of success.

Before disassembling your phone, discharge the battery below 25%. A charged lithium-ion battery can catch fire and/or explode if accidentally punctured.

If your battery is swollen, [take appropriate precautions](#).



TOOLS:

- [Suction Handle](#) (1)
- [iFixit Opening Picks set of 6](#) (1)
- [Spudger](#) (1)
- [T5 Torx Screwdriver](#) (1)
- [Tweezers](#) (1)
- [iOpener](#) (1)
- [Isopropyl Alcohol](#) (1)



PARTS:

- [Google Pixel Replacement Battery](#) (1)
- [Google Pixel Display Adhesive](#) (1)
- [Tesa 61395 Tape](#) (1)

Step 1 — Display



- Turn off the device.
- [Prepare an iOpener](#) to heat the edges of the display and soften the adhesive underneath. Alternatively, you may use a heat gun or a hair dryer.
- ⓘ The surfaces near the speaker and microphone (top and bottom respectively) have larger adhesive sections. These areas may require slightly longer heat exposure. The display should be heated until it's slightly too hot to touch, for roughly two minutes.

Step 2



ⓘ In the following steps, you will separate the display panel by slicing through the adhesive bonding the display to the Pixel's chassis.

- For reference, the back of the display panel is shown at left. Note the narrow clearance between the side of the display unit and the OLED panel.

⚠ Inserting an opening tool deeper than 1.5 mm into the sides of the device, or 9 mm into the top and bottom can permanently damage the display.

Step 3




- Use a [suction handle](#) to pull up on the display and create a slight gap between the display and the phone's chassis.
- ⓘ If your display is cracked, [cover it with packing tape](#) to help the suction cup adhere and prevent glass shards from popping loose.

Step 4



- Insert an opening pick or a playing card into the gap between the chassis and the display assembly.
- Begin to slide the opening pick around the edge of the display, cutting through the adhesive that secures it.

 The display panel is fragile. If you plan to re-use your display, take care to insert your tool only as far as necessary to separate the adhesive. Inserting the tool any further can damage the OLED panel under the glass.

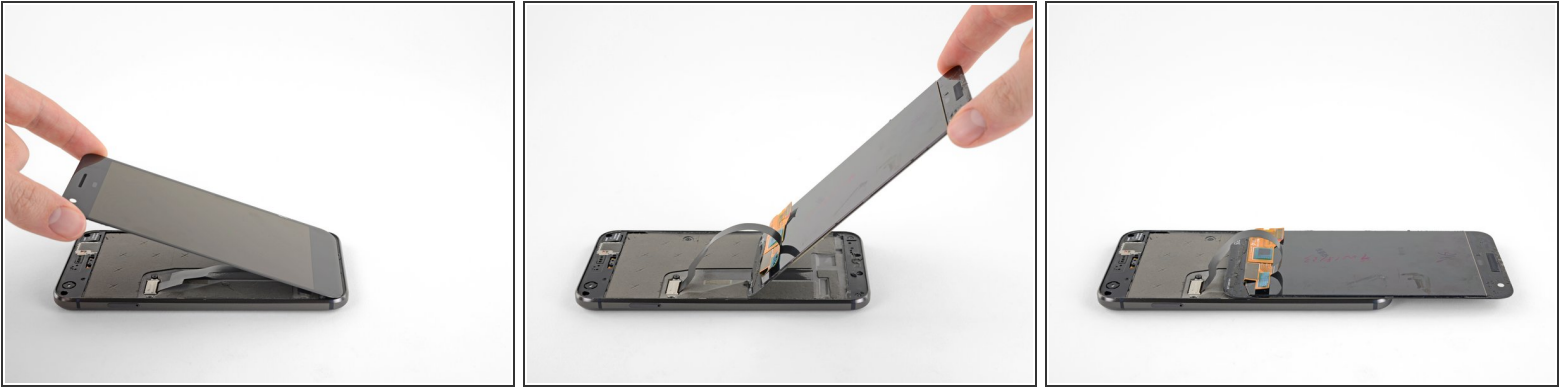
Step 5



- Continue carefully separating the adhesive around the rest of the device.

 Take extra care with the side bezels, which are only 1.5 mm deep.

Step 6



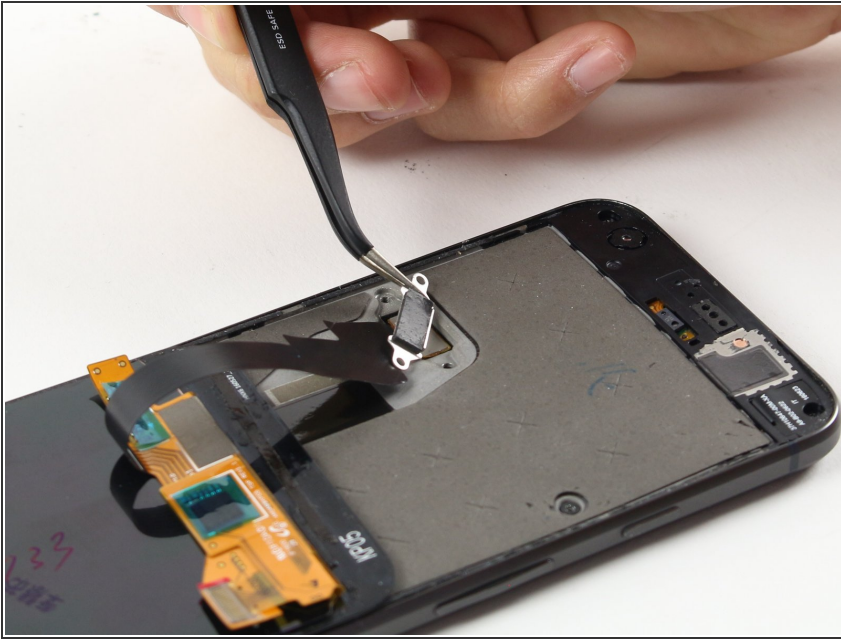
- With the adhesive cut, slowly lift the display up from the top (the side with the speaker-grille cutout), carefully flip it over vertically toward the bottom of the device, and rest it on its face, as shown.
- ⚠ Do not attempt to completely remove the display yet, as it is still connected by a fragile ribbon cable. Be careful to not to strain the cable while positioning the display.

Step 7



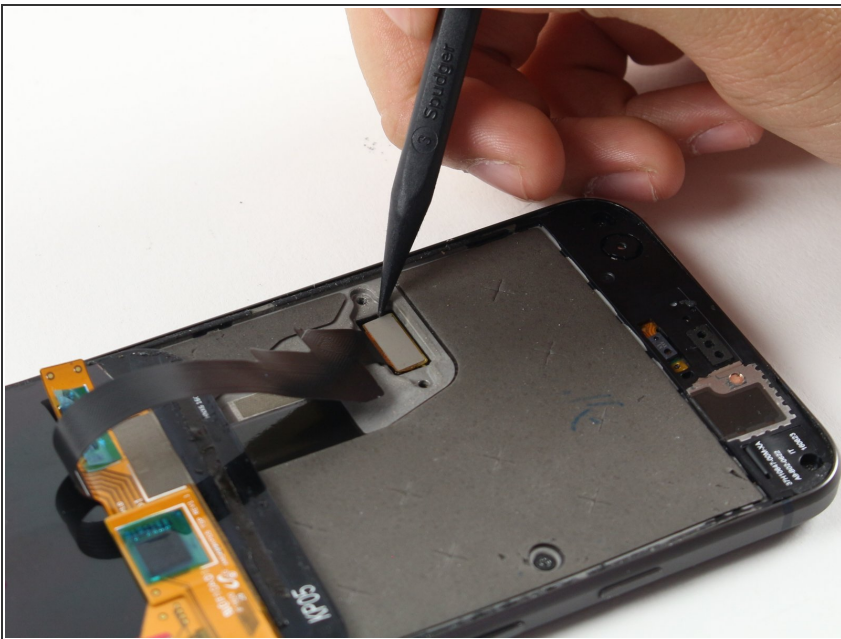
- Use a T5 Torx driver to remove the two black 3.5 mm T5 screws securing the display cable connector bracket.

Step 8



- Use tweezers to remove the bracket that holds the display connector in place.

Step 9



- Use a spudger to pry up the [display cable connector](#), freeing the display.

Step 10



- Remove the display.
- ★ Some replacement displays do not come with an [earpiece speaker grille](#). If your replacement screen doesn't have one, be sure to transfer the grille from your old display to the new one.
- ★ During reassembly, pause here to test the functionality of your new part and [replace the display adhesive](#).

Step 11 — Midframe



- Use a T5 Torx driver to remove the nine 3.5 mm screws securing the midframe.

Step 12



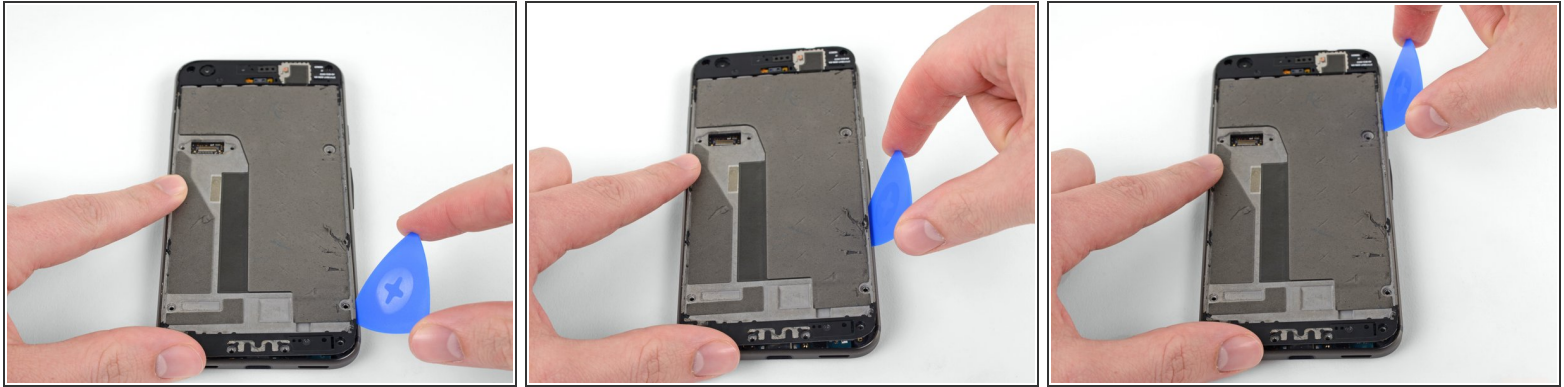
- The midframe is held tightly in place by five clips. To release these clips, apply inward pressure with an opening tool as shown in the steps below.

Step 13



- Wedge an opening pick into the notch that is located at the bottom right corner of the phone.

Step 14



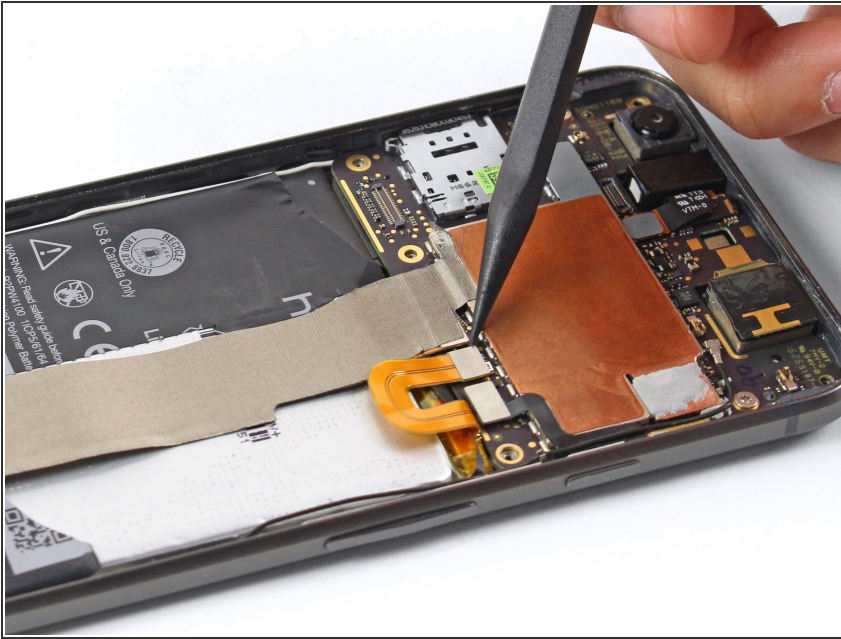
- Slide the opening pick up both sides of the device in the small space between the midframe and the rear case to release the clips holding it in place.
- ⓘ Note that the clips are not released by sliding *through* them, but rather the inward pressure the opening pick creates as it enters the gap *around* them.
- ⓘ If the clasps fail to come undone, try pushing the edge you're working on inward with your hand, or using a thicker tool like a spudger.
- ⚠ Do not attempt to remove the midframe yet! There is still a fragile ribbon cable underneath connecting the earpiece speaker to the motherboard.

Step 15



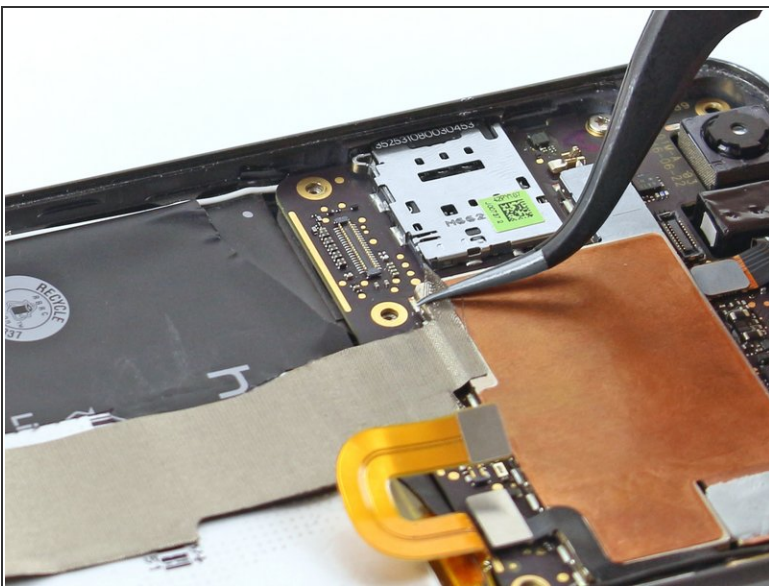
- Use a spudger to pry the earpiece speaker cable connector straight up, disconnecting it from the motherboard.
- Remove the mid-frame from the device.
- ☑ During reassembly, reattach the earpiece speaker cable and insert the top side of the midframe before you snap the clips back into place.

Step 16 — Battery



- Use a spudger to pry up the battery ribbon cable, disconnecting it from the motherboard.

Step 17



- Using tweezers, peel back the silver tape that covers the cable connecting the motherboard to the daughterboard. Peel just enough to see the connector underneath.
- Use a spudger to pry the connector straight up and disconnect it from the motherboard.

Step 18



- Peel up the sticker covering the interconnect cable on the daughterboard side.
 - Use a spudger to disconnect the cable from the daughterboard.
 - Remove the cable from the device.
- ☒ During reassembly, make sure this interconnect cable is positioned correctly. The phone will not boot up if the cable is installed upside down.

Step 19



- The battery has a jacket that can double as a battery removal tab, pull it to remove the battery. If that doesn't work, follow the instructions below.
 - Carefully wedge an opening pick underneath the battery to break the adhesive.
 - If the battery does not come out easily, **don't pry aggressively**. Apply heat to the back of the phone with an iOpener or a heat gun to loosen the adhesive.
- ⚠ Try your best not to deform the battery during this process. Soft-shell lithium-ion batteries can leak dangerous chemicals, catch fire, or even explode if damaged. Do not use excessive force or pry at the battery with metal tools.
- ⚠ Do not reuse the battery after it has been removed, as doing so is a potential safety hazard. Replace it with a new battery.

Step 20



- Remove the battery.
- ☑ To install a new battery:
 - Remove any remaining adhesive from the phone, and clean the glued areas with isopropyl alcohol and a lint-free cloth.
 - Secure the new battery with [pre-cut adhesive](#) or double-sided [adhesive tape](#). Apply the new adhesive to the phone, not directly onto the battery.
 - Press the new battery firmly into place for 5-10 seconds.

Compare your new replacement part to the original part—you may need to transfer remaining components or remove adhesive backings from the new part before installing.

To reassemble your device, follow the above steps in reverse order.

After completing this guide, [calibrate your newly-installed battery](#).

Take your e-waste to an [R2 or e-Stewards certified recycler](#).

Repair didn't go as planned? Check out our [Answers community](#) for troubleshooting help.