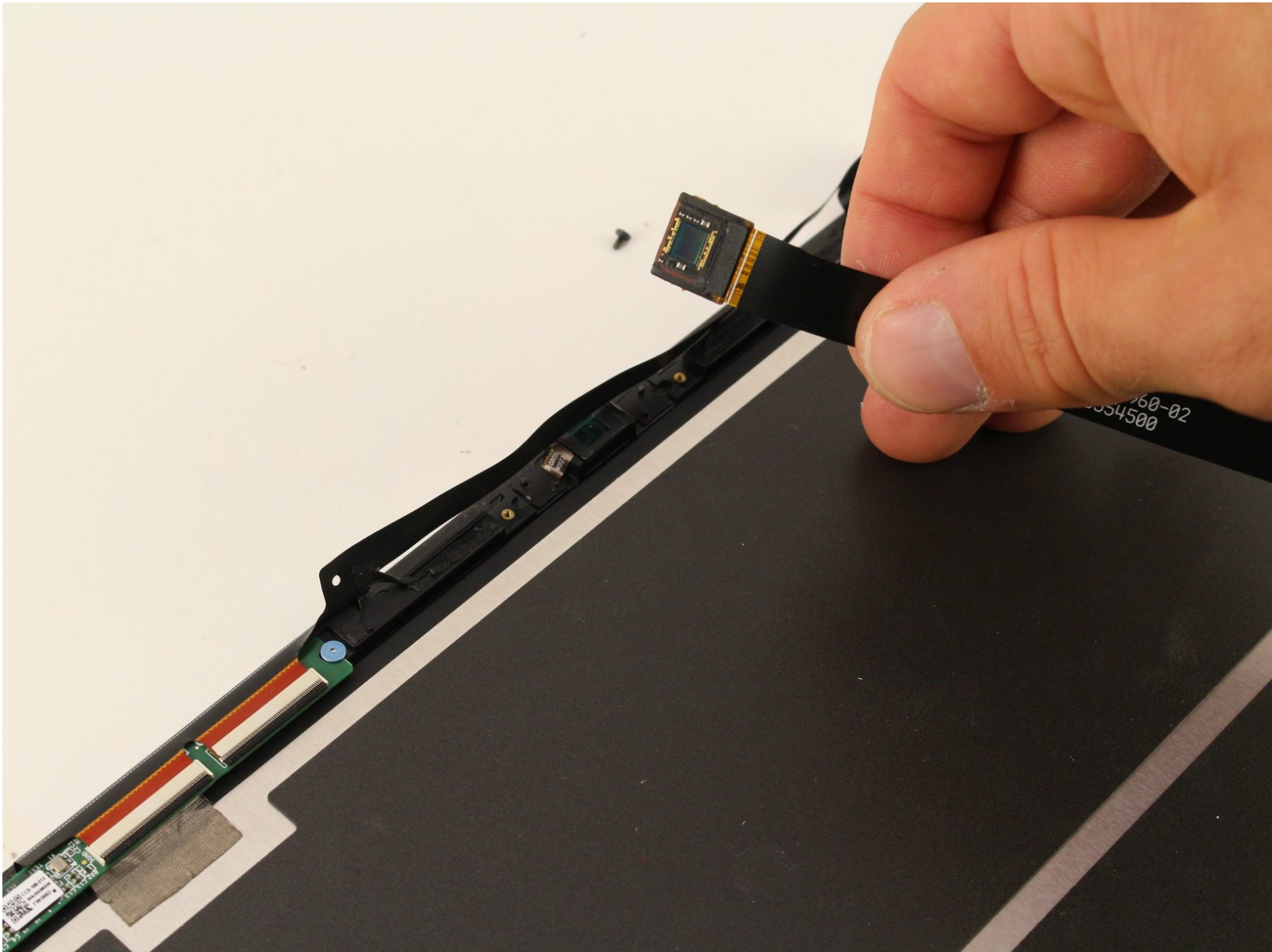




# Google Pixel Slate Front-Facing Camera Replacement

How to remove and replace the front-facing camera in your Google Pixel Slate.

Written By: Spencer Alonge



# INTRODUCTION

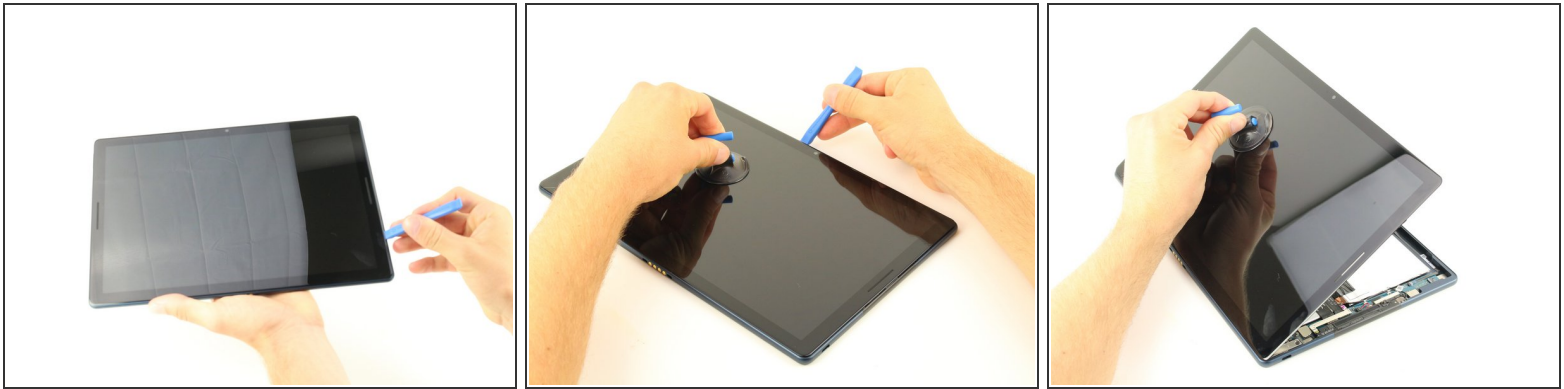
Use this guide to remove and replace the front-facing camera of your Google Pixel Slate.



## TOOLS:

- [Suction Handle](#) (1)
  - [T2 Torx Screwdriver](#) (1)
  - [iFixit Opening Tool](#) (1)
-

## Step 1 — Screen



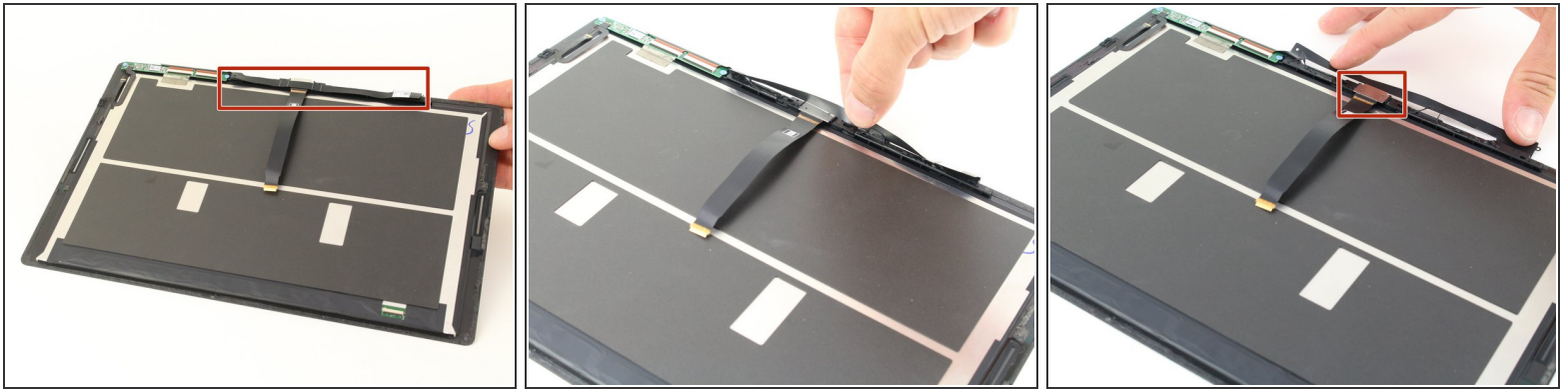
- Orient the Google Pixel Slate so that the screen is facing upwards.
- Use the iFixit opening tool to separate screen from main body.
- Use the suction cup to remove the screen from the body of the device.

## Step 2



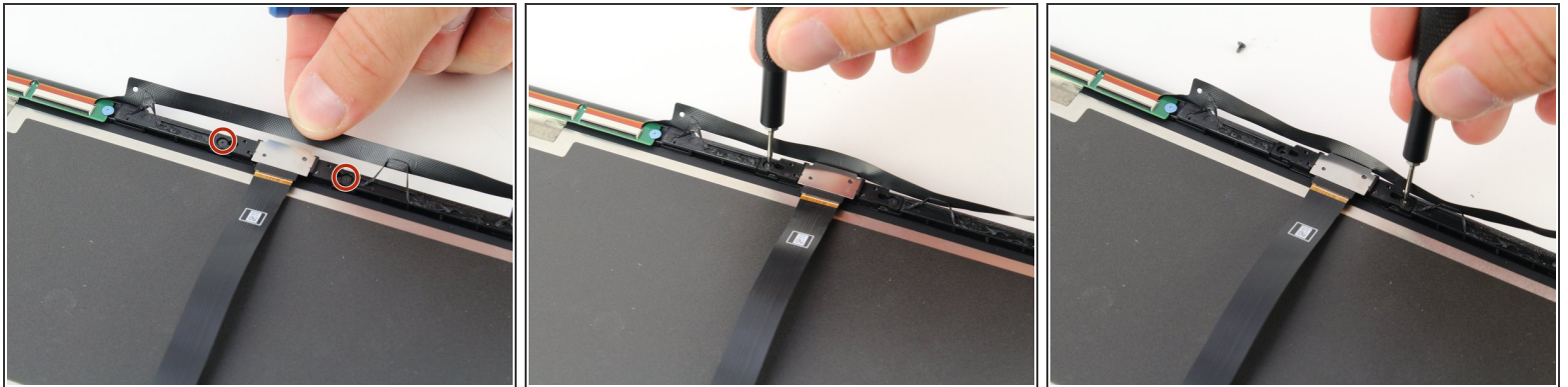
- Gently disconnect the three flat-wires from the screen.
- Carefully separate and remove the screen from the body of the device.

### Step 3 — Front-Facing Camera



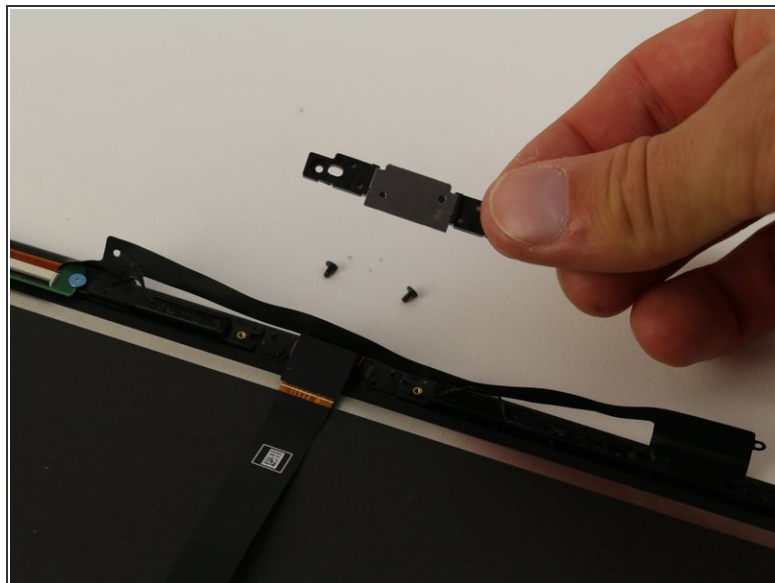
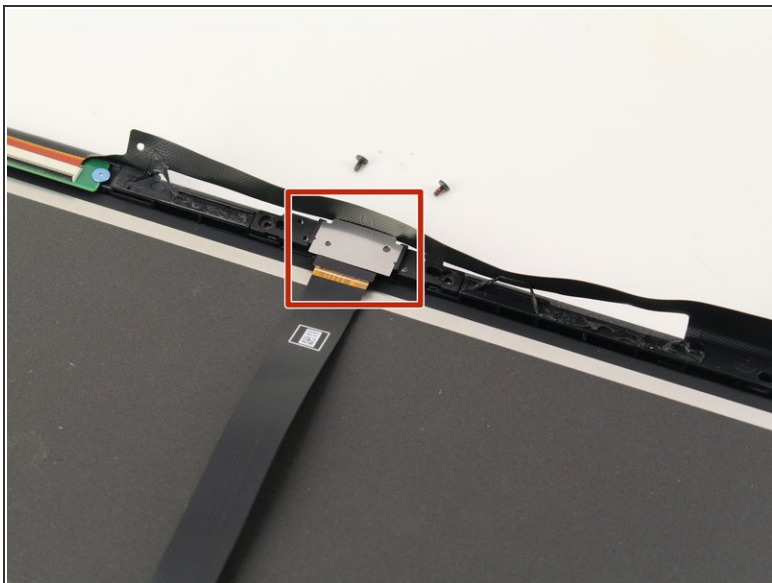
- Once removed, place the screen face down.
- Peel back the black, adhesive strip covering the front camera so that the silver plate is exposed.

### Step 4



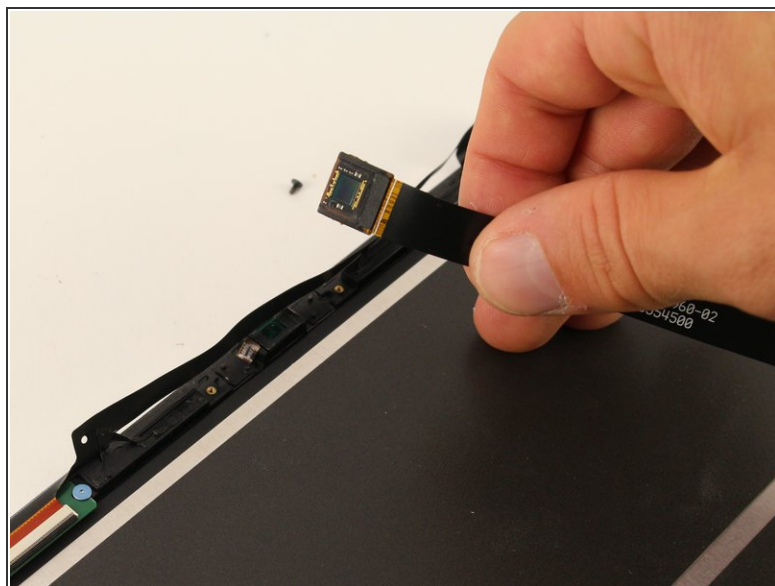
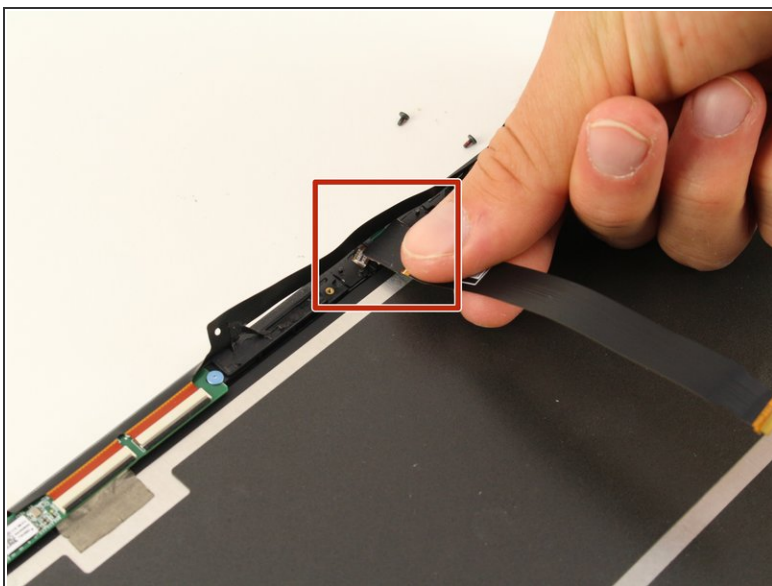
- Hold back the adhesive tape to expose the two black 2mm screws that are holding down the cover plate.
- Use the T2 Torx screwdriver to remove the two 2mm screws.

## Step 5



- Once the two 2mm screws are removed, lift and remove the cover plate.

## Step 6



- Pull upwards on the flat wire to remove the front-facing camera from the device.
- ⓘ *The camera may be secured to the screen body with adhesive tape. Apply gentle force to remove the camera by removing the tape.*

To reassemble your device, follow these instructions in reverse order.