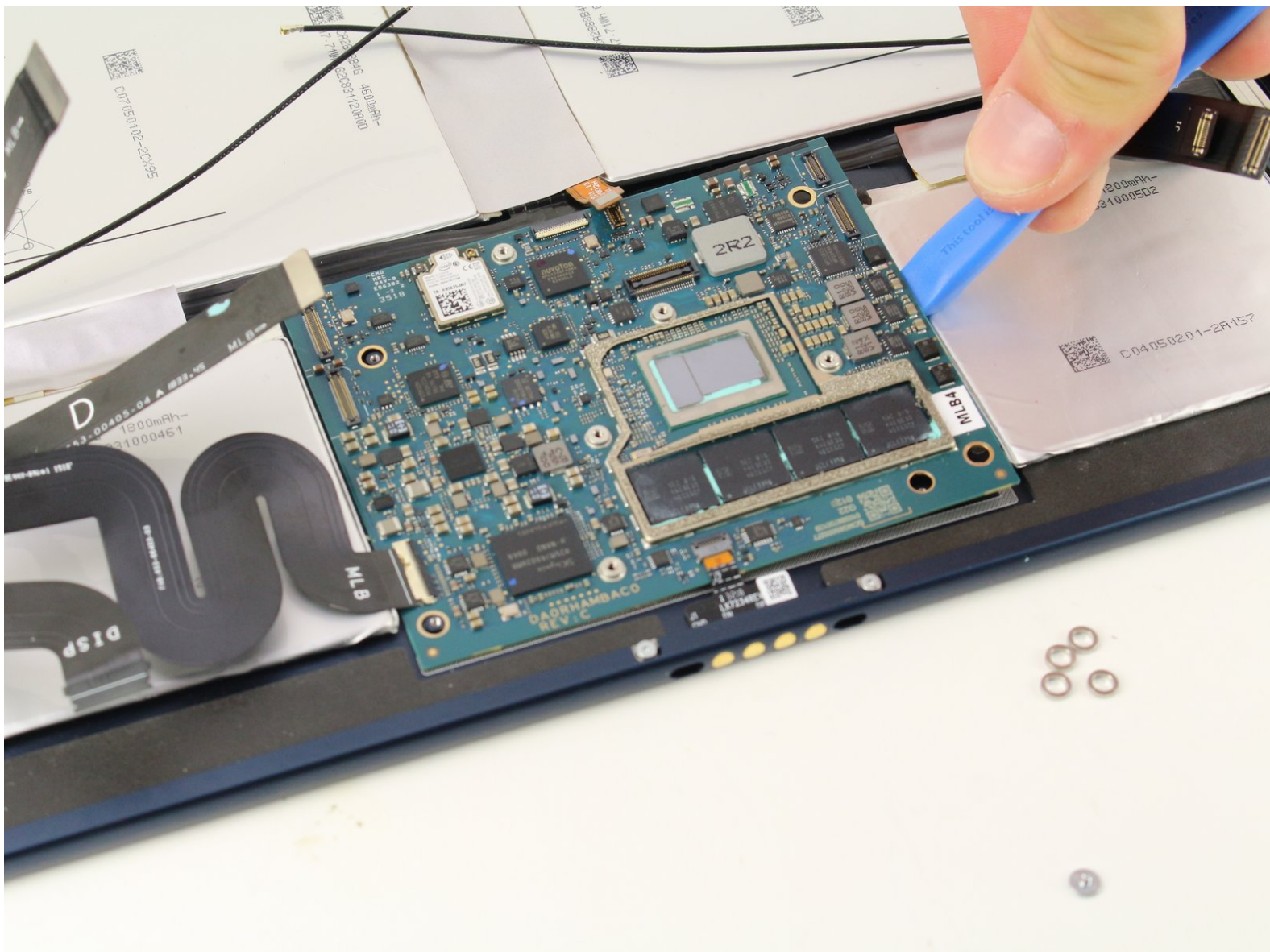




# Google Pixel Slate Motherboard Replacement

Use this guide to replace the motherboard in your Google Pixel Slate.

Written By: Spencer Alonge

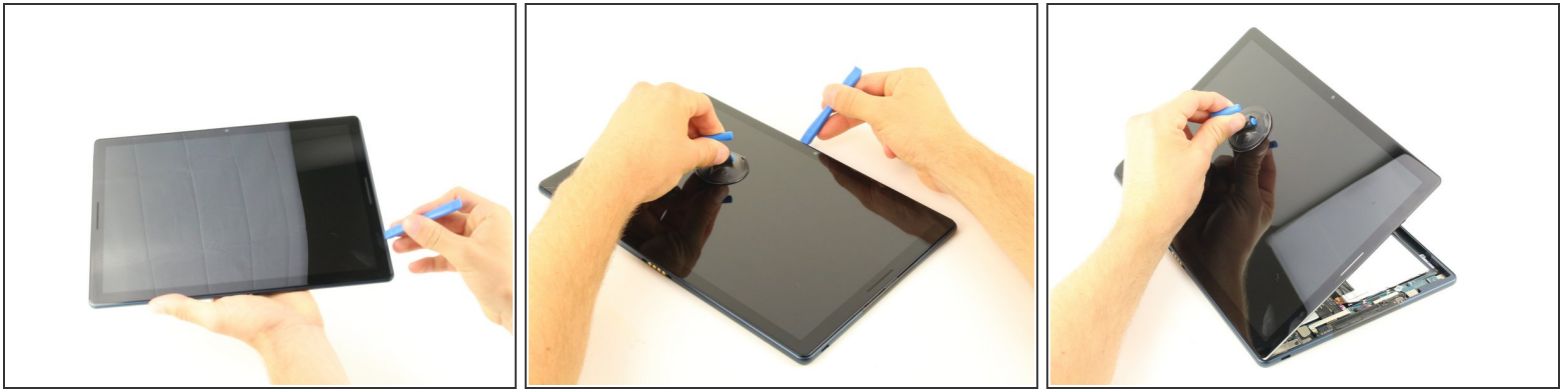




## TOOLS:

- [Suction Handle](#) (1)
- [T3 Torx Screwdriver](#) (1)
- [T2 Torx Screwdriver](#) (1)
- [iFixit Opening Tool](#) (1)

## Step 1 — Screen



- Orient the Google Pixel Slate so that the screen is facing upwards.
- Use the iFixit opening tool to separate screen from main body.
- Use the suction cup to remove the screen from the body of the device.

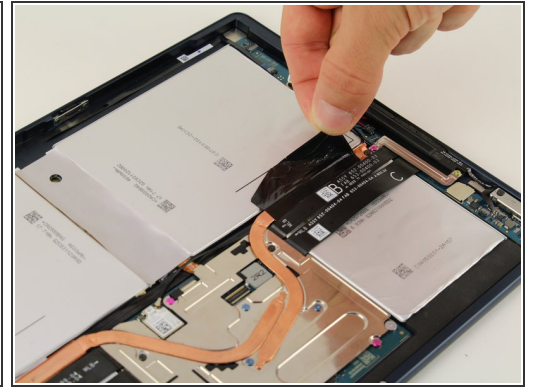
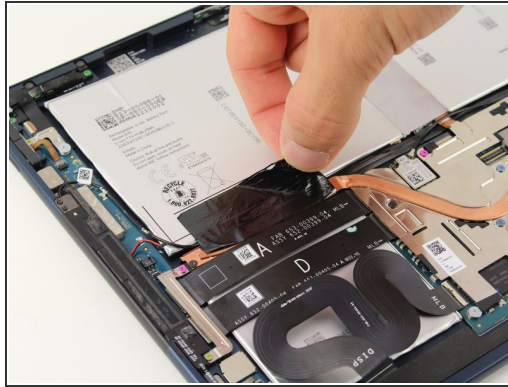
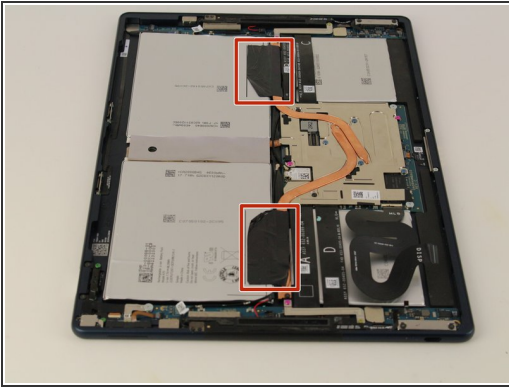
## Step 2



- Gently disconnect the three flat-wires from the screen.
- Carefully separate and remove the screen from the body of the device.

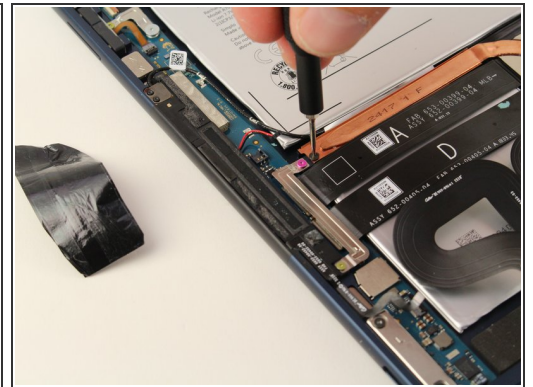
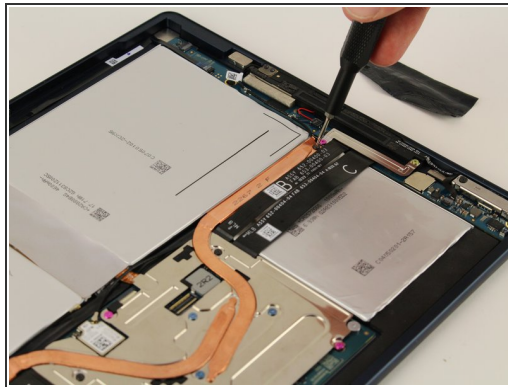
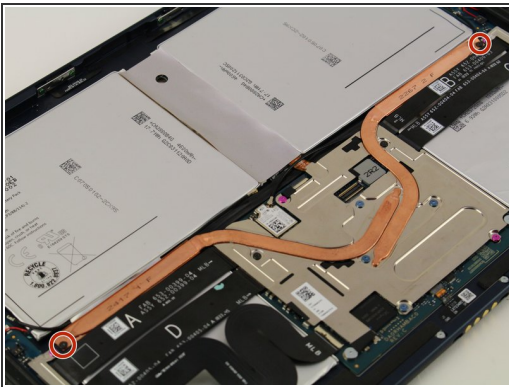


## Step 3 — Motherboard



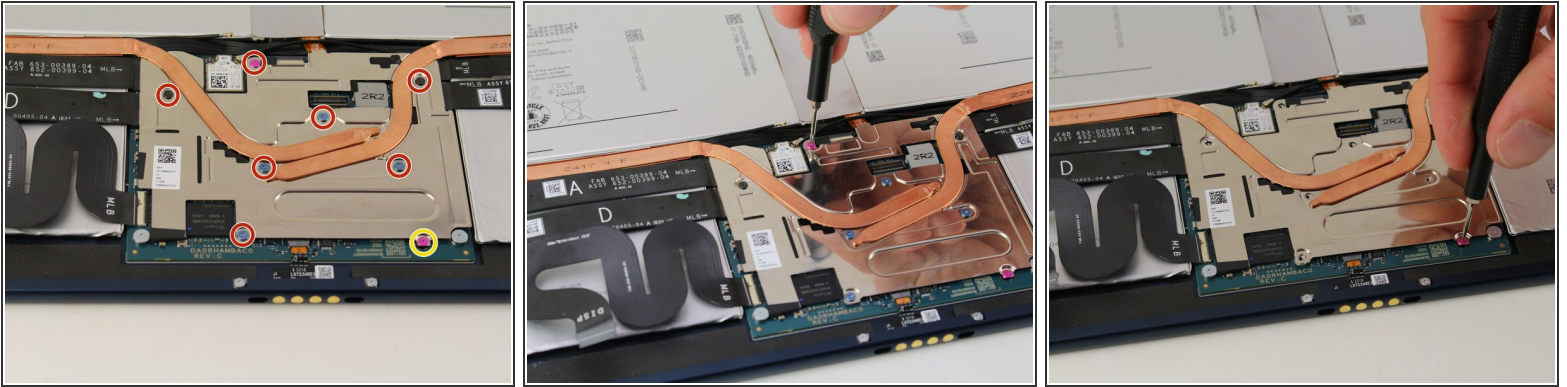
- Once the screen is removed, remove the two black, adhesive strips.

## Step 4



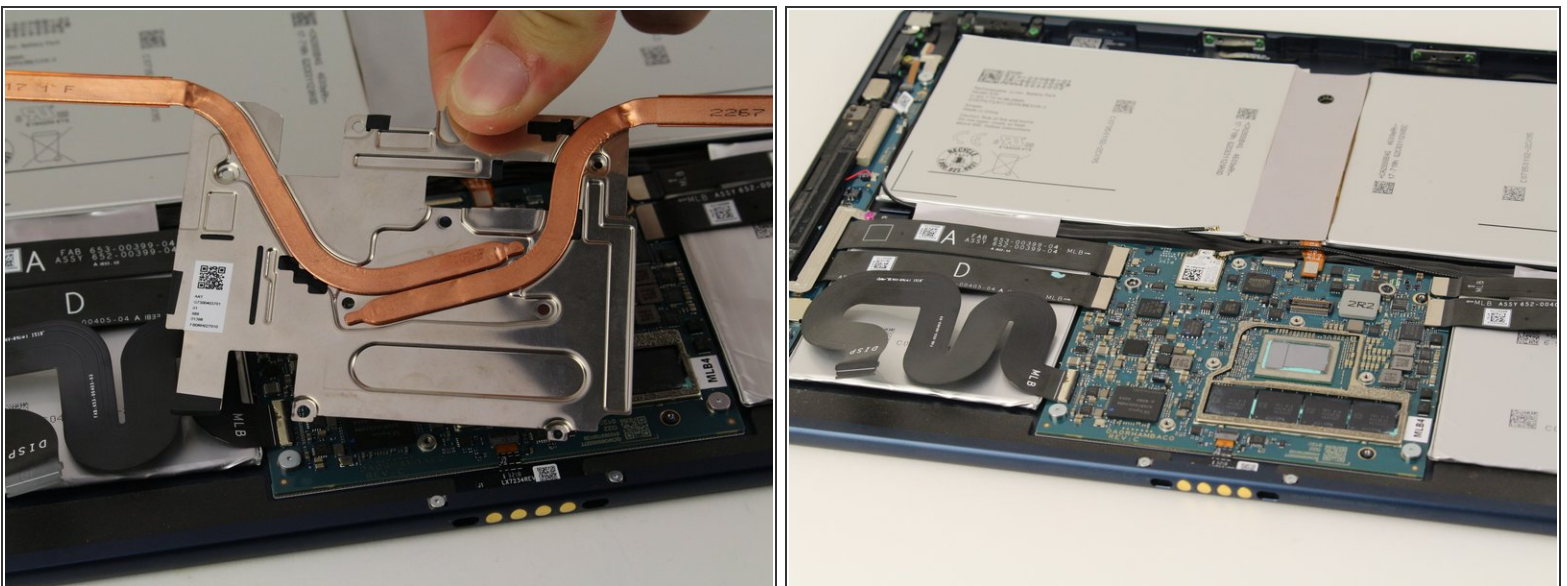
- Use a T3 Torx screwdriver to remove the two black screws that are holding down the copper strip.

## Step 5



- Use the T3 Torx screwdriver to remove the seven 3mm screws.
- Use a T2 Torx screwdriver to remove the pink 2mm screw closest to the edge.
- ⓘ There is a total of four blue 3mm screws, two black 3mm screws, one pink 3mm screw, and one pink 2mm screw holding down the plate.

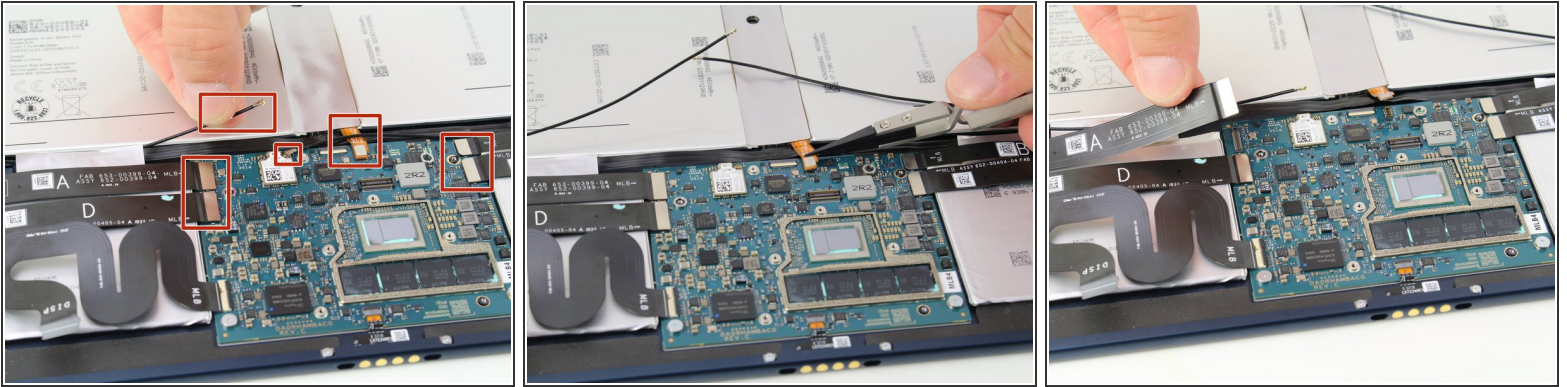
## Step 6



- Lift and remove the metal plate.



## Step 7



- Remove the two speaker plugs, one battery plug, and disconnect the four flat wires from the motherboard.

❗ Nylon Tipped Tweezers may be necessary to remove the wires effectively.

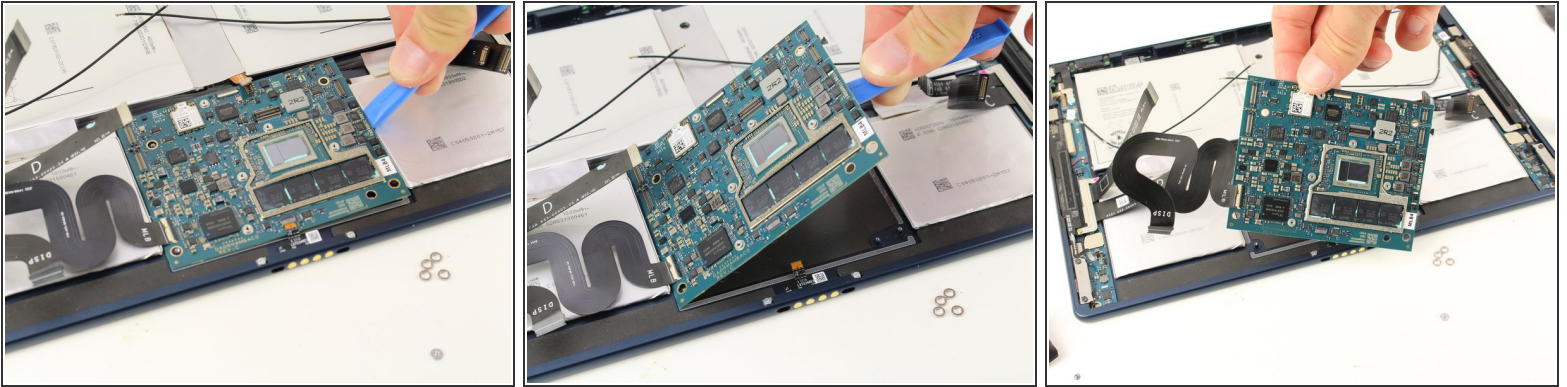
## Step 8



- Use a T3 Torx screwdriver to remove the two silver screws.

⚠ Remove the 4 exposed washers from the motherboard and put aside.

## Step 9



- Use the iFixit opening tool to remove the motherboard from the device.

To reassemble your device, follow these instructions in reverse order.