



Google Pixel Slate Rear-Facing Camera Replacement

How to remove and replace the rear-facing camera in your Google Pixel Slate.

Written By: Spencer Alonge

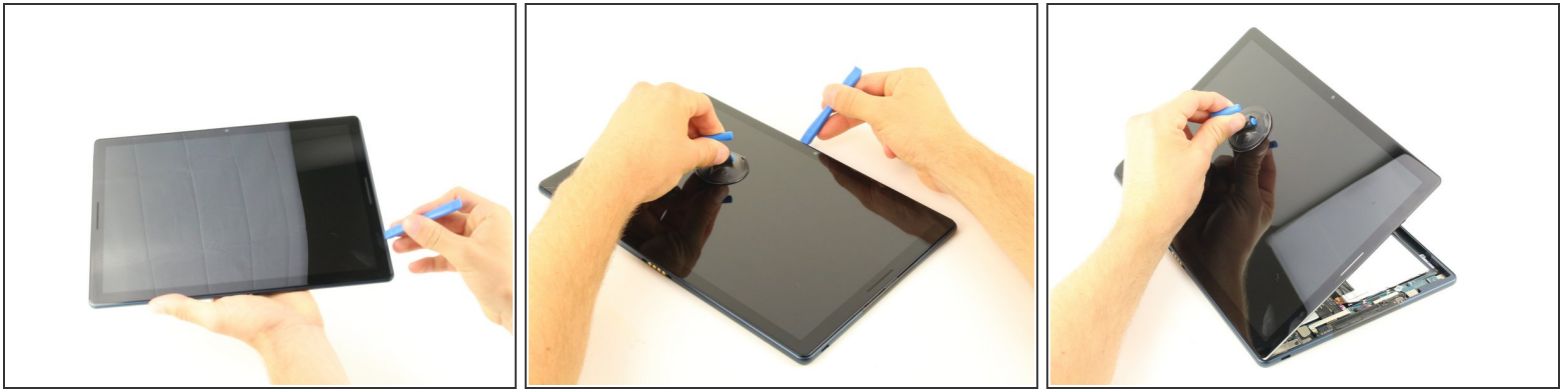




TOOLS:

- [Suction Handle](#) (1)
 - [T3 Torx Screwdriver](#) (1)
 - [T2 Torx Screwdriver](#) (1)
 - [Nylon Tipped Tweezers](#) (1)
 - [iFixit Opening Tool](#) (1)
-

Step 1 — Screen



- Orient the Google Pixel Slate so that the screen is facing upwards.
- Use the iFixit opening tool to separate screen from main body.
- Use the suction cup to remove the screen from the body of the device.

Step 2



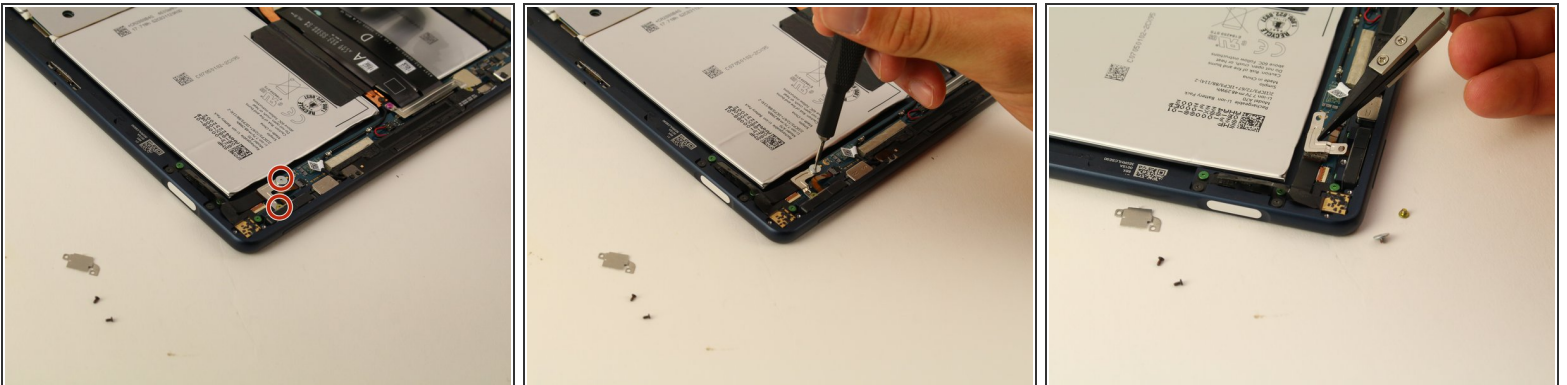
- Gently disconnect the three flat-wires from the screen.
- Carefully separate and remove the screen from the body of the device.

Step 3 — Rear-Facing Camera



- Use a T2 Torx screwdriver to remove the two black 2mm screws holding down the square plate.
- Use the Nylon Tipped Tweezers to lift the metal plate.

Step 4



- Use a T3 Torx screwdriver to remove the two yellow and grey 3mm screws from the L-shaped plate.
- Use the Nylon Tipped Tweezers to lift the plate from the device.

Step 5



- Gently pull upwards to remove the camera.

To reassemble your device, follow these instructions in reverse order.