



Google Pixel Slate Screen Replacement

How to remove and replace the screen from Google Pixel Slate.

Written By: Spencer Alonge



INTRODUCTION

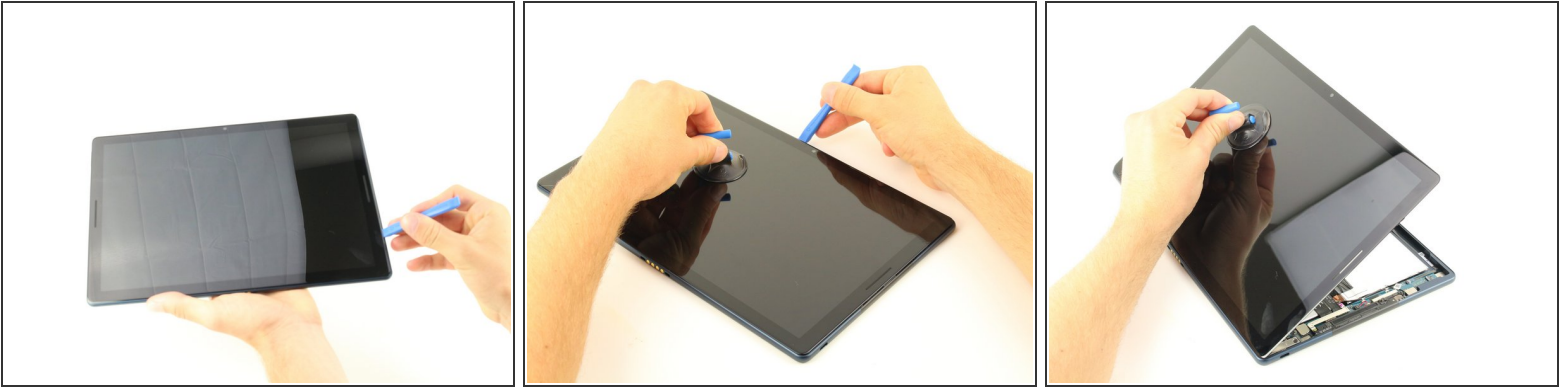
If you need to remove and replace the screen, refer to this guide.



TOOLS:

- [Suction Handle](#) (1)
 - [iFixit Opening Tool](#) (1)
-

Step 1 — Screen



- Orient the Google Pixel Slate so that the screen is facing upwards.
- Use the iFixit opening tool to separate screen from main body.
- Use the suction cup to remove the screen from the body of the device.

Step 2



- Gently disconnect the three flat-wires from the screen.
- Carefully separate and remove the screen from the body of the device.

To reassemble your device, follow these instructions in reverse order.