



# Google Pixel XL Battery Replacement

A guide showing how to replace a non-functional battery in the Google Pixel XL.

Written By: Andrew Ferguson



## INTRODUCTION

This guide will teach you how to replace the battery on your Google Pixel XL if yours is damaged or broken.

**Before disassembling your phone, discharge the battery below 25%.** A charged lithium-ion battery can catch fire and/or explode if accidentally punctured.

If your battery is swollen, [take appropriate precautions](#). **Do not heat your phone.** If needed, you can use a dropper or syringe to inject isopropyl alcohol (90+%) around the edges of the back cover to weaken the adhesive. Swollen batteries can be very dangerous, so wear eye protection and exercise due caution, or take it to a professional if you're not sure how to proceed.



### TOOLS:

- [Suction Handle](#) (1)
- [T5 Torx Screwdriver](#) (1)
- [SIM Card Eject Tool](#) (1)
- [iOpener](#) (1)
- [Spudger](#) (1)
- [iFixit Opening Picks set of 6](#) (1)



### PARTS:

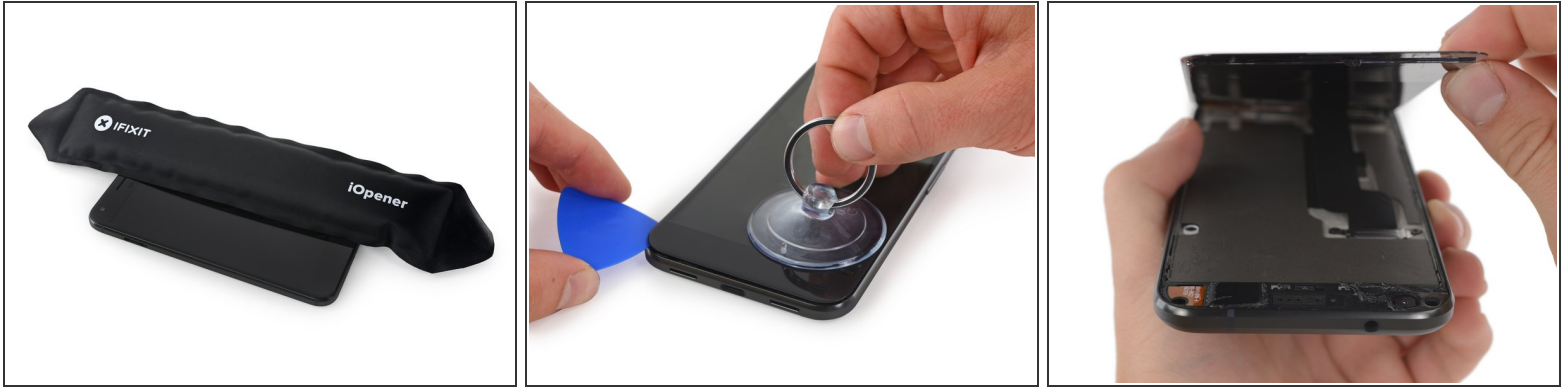
- [Google Pixel XL Replacement Battery](#) (1)

## Step 1 — Battery



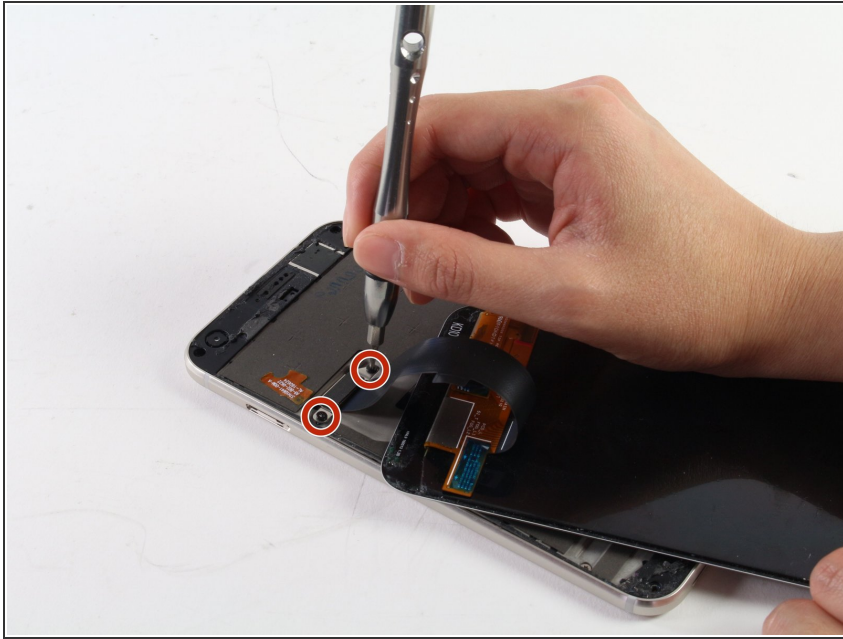
- Power off your device.
- Eject the SIM card tray by inserting a SIM card tool (or the end of a paperclip) into the hole in the SIM tray. Press firmly to eject the tray.
- Slide the SIM card tray out of the phone.
- ☑ Take care not to lose the SIM card, which is small and may fall out unexpectedly.

## Step 2



- Heat the perimeter of the display using an iOpener, hair dryer, or heat gun.
  - ⓘ Heat will help soften the adhesive securing the display, making it easier to separate. The display should be heated until it's slightly too hot to touch, for roughly two minutes. Use extra caution if working with a heat gun, as applying too much heat will permanently damage the OLED panel.
- Use a suction cup to lift one edge of the screen just slightly, creating a small gap between the display and the frame of the phone.
- Insert an opening pick into the gap.
- Carefully slide the opening pick around the perimeter of the phone to separate the adhesive.
  - ⚠ If you plan to re-use the display, don't insert the opening pick more than a few millimeters into the phone, or you may damage the OLED panel underneath the glass.
  - ⓘ You may need to slide the pick around the perimeter multiple times to fully separate the adhesive. Work slowly and carefully until the display begins to come free.
- Gently lift the display, but don't try to fully detach it yet—it is still connected by a ribbon cable lying underneath.

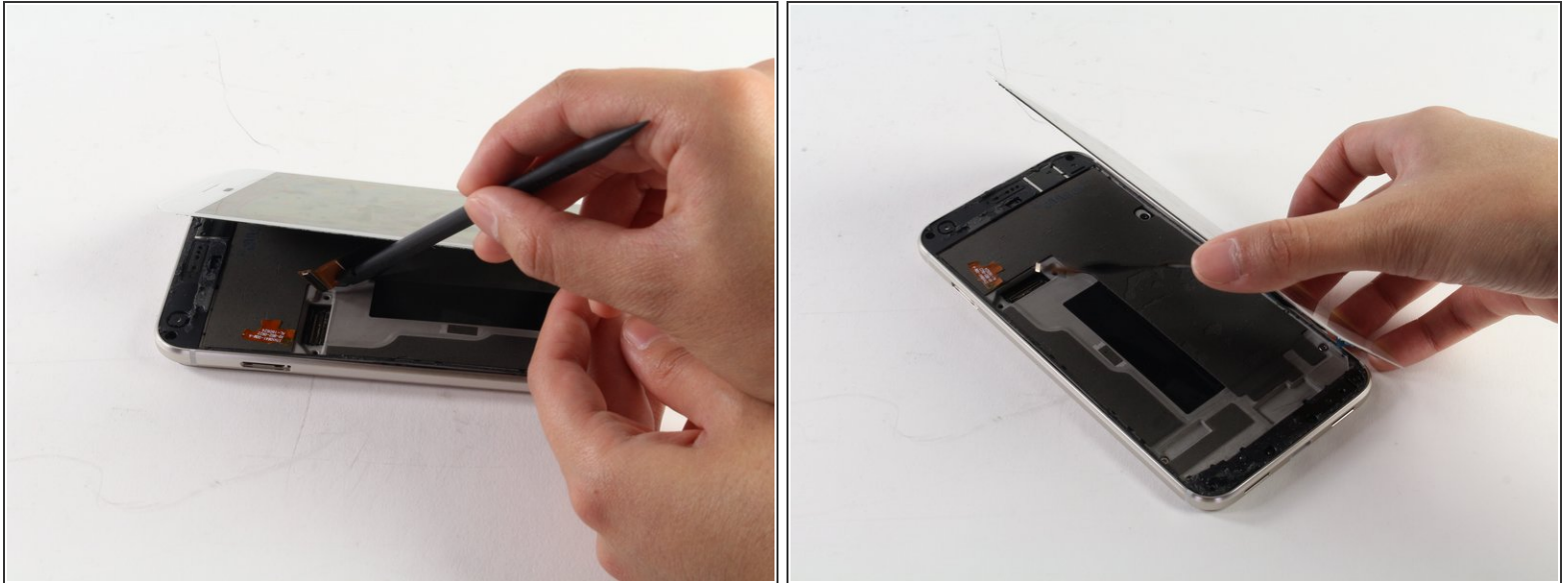
## Step 3






- Use the T5 screwdriver to remove the two black 4mm screws which hold the screen connector shield in place.
- Gently remove the metal screen connector shield.



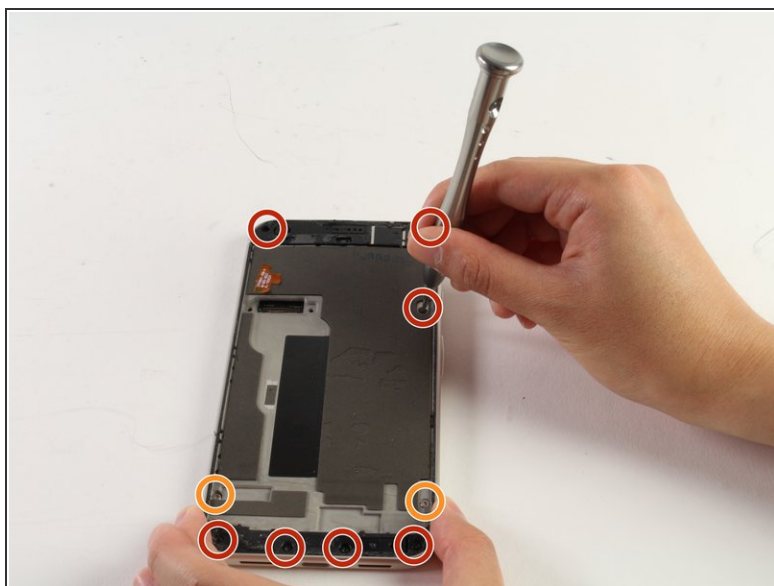
## Step 4



 Be careful not to damage the connector when performing this step.

- Use the spudger or your fingernail to lift off the connector that holds the screen in place.
- Lift off the display assembly completely and place it off to the side.
-  Gently scrape any remaining adhesive from your phone. Use a small amount of high concentration isopropyl alcohol (at least 90%) to clean the frame and prep it for the new screen adhesive.
-  The replacement adhesive should only be applied to the edges of the frame, but may come with the center filled in.
  - To remove the unnecessary center section of the adhesive strip, carefully peel away the perforated rectangle in middle of the white backing. At the same time, peel up the black adhesive underneath the white backing.
-  Only adhesive for the edges of the frame should remain.

## Step 5



- Remove the seven black 4mm T5 screws.
- Remove the two silver 3mm T5 screws which secure the mid frame assembly.
- ⓘ There will be clicks as you take the mid frame out of the phone due to the clips that normally hold it in place.
- Lift the mid frame from the rear casing by pulling it upwards.

## Step 6



- Disconnect the battery by using a spudger to pry up the battery connector.
- ⓘ A large daughterboard interconnect cable covers the battery. Before removing the battery, you will need to detach this cable and move it out of the way.
- Peel back the tape covering the lower end of the cable to reveal where it connects to the daughterboard. Then, use your spudger to pry up the cable and disconnect it.
- If desired, you can do the same at the top end of the cable to detach and remove it completely, or you may simply bend the cable gently out of the way while you remove the battery.



## Step 7



- Pull on the perforated tab at the top of the battery and peel it down the center of the phone.
- Grab the tab firmly and pull with firm, steady pressure. Slowly, the adhesive securing the battery will give way and the battery should come free.
- ⓘ If the tab rips or you are unable to free the battery, you may use a plastic card (such as a credit card) or spudger to pry up the battery.

⚠ Use extreme care when handling the battery. A puncture or bend could result in a fire.

- To install a new battery:
  - Remove any remaining adhesive from the phone, and clean the glued areas with isopropyl alcohol and a lint-free cloth.
  - Secure the new battery with [pre-cut adhesive](#) or double-sided adhesive tape. In order to position it correctly, apply the new adhesive into the phone, not directly onto the battery. The adhesive should go around the perimeter of the battery compartment, but not in the rectangular cutout in the center (which is actually the back side of the display).
  - Press the battery firmly into place for 5-10 seconds.

To reassemble your device, follow these instructions in reverse order.