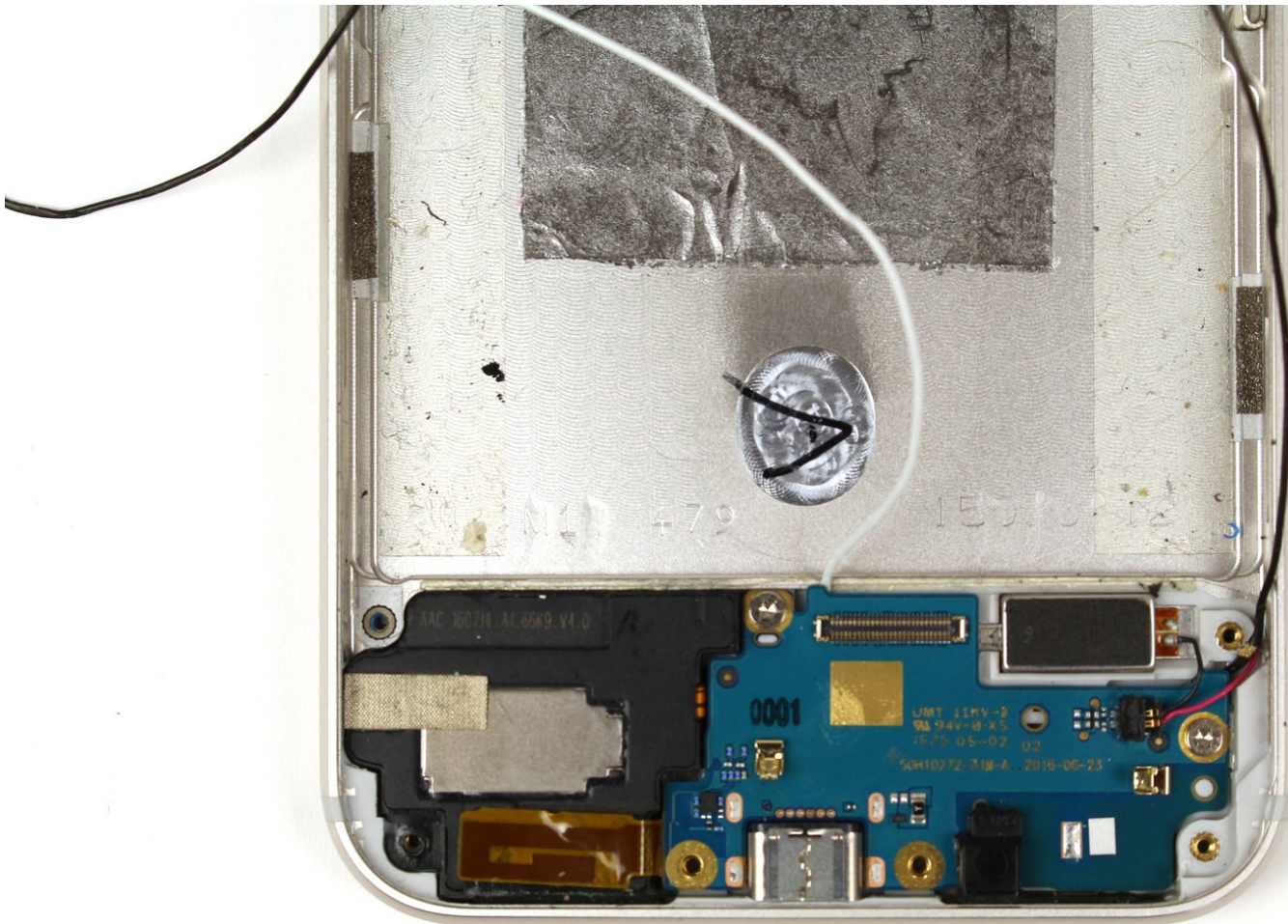


Written By: Julia List



Page 1 of 5

# INTRODUCTION

If your phone's charging port is damaged, use this guide to replace your Google Pixel XL's charging assembly.

Please note, the charging port is soldered onto the daughterboard. This guide instructs for the replacement of the entire daughterboard for simplicity, but you do have the option of replacing just the charging port.



## TOOLS:

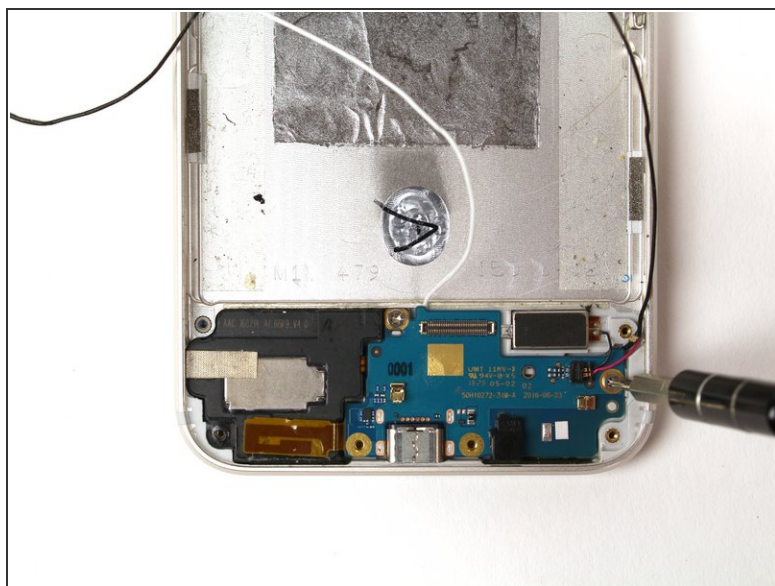
- [Suction Handle](#) (1)
- [T5 Torx Screwdriver](#) (1)
- [SIM Card Eject Tool](#) (1)
- [iOpener](#) (1)
- [Spudger](#) (1)



## PARTS:

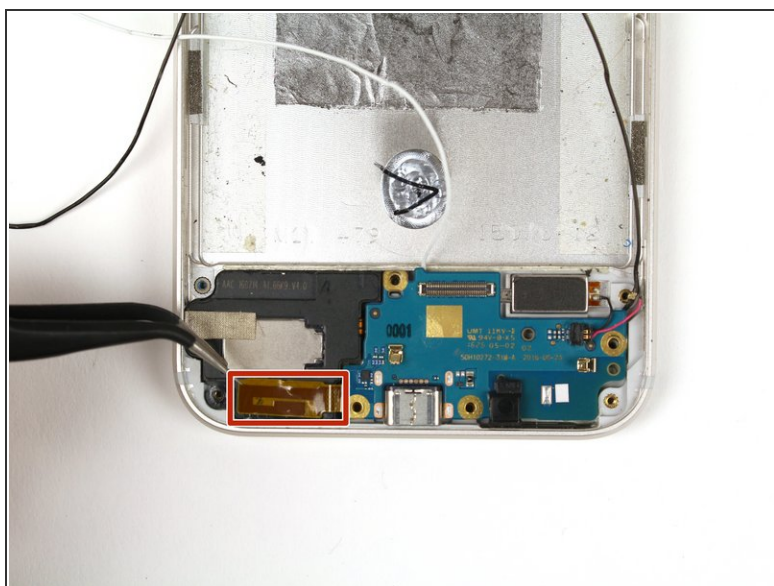
- [Google Pixel XL Charging Assembly](#) (1)

## Step 1 — Charging Assembly



- Using a T5 Torx screwdriver, unscrew the two 3 mm screws from the daughterboard.

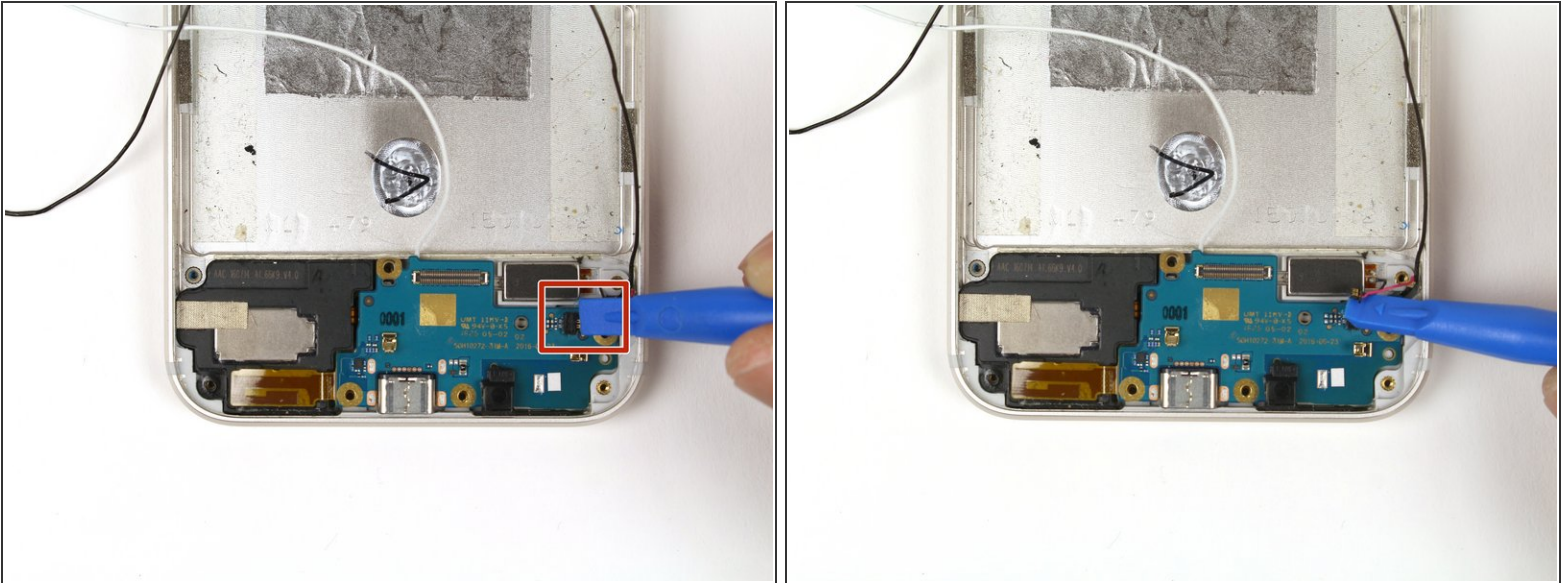
## Step 2



- Using a pair of precision tweezers, carefully peel the orange tape from the frame.

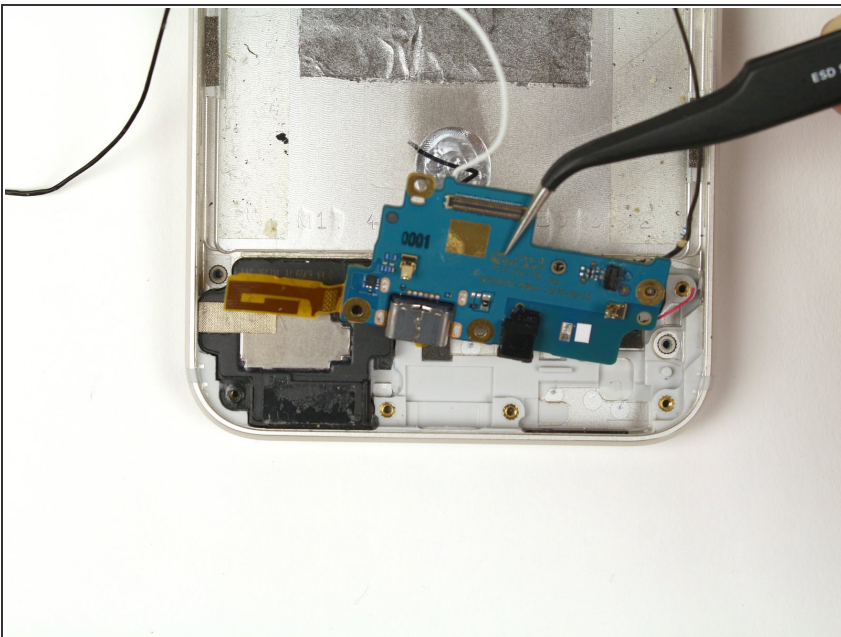


### Step 3



- Using a blue plastic opening tool, detach the connector by gently pulling to the right.
- ⓘ Applying too much force may result in damaging the black connector and/or the cable.

### Step 4



- Gently lift the daughterboard out of the device.
- ⓘ To replace the charging assembly, you will need to replace the entire daughterboard.

To reassemble your device, follow these instructions in reverse order.

This document was generated on 2020-04-04 11:23:01 AM (MST).

