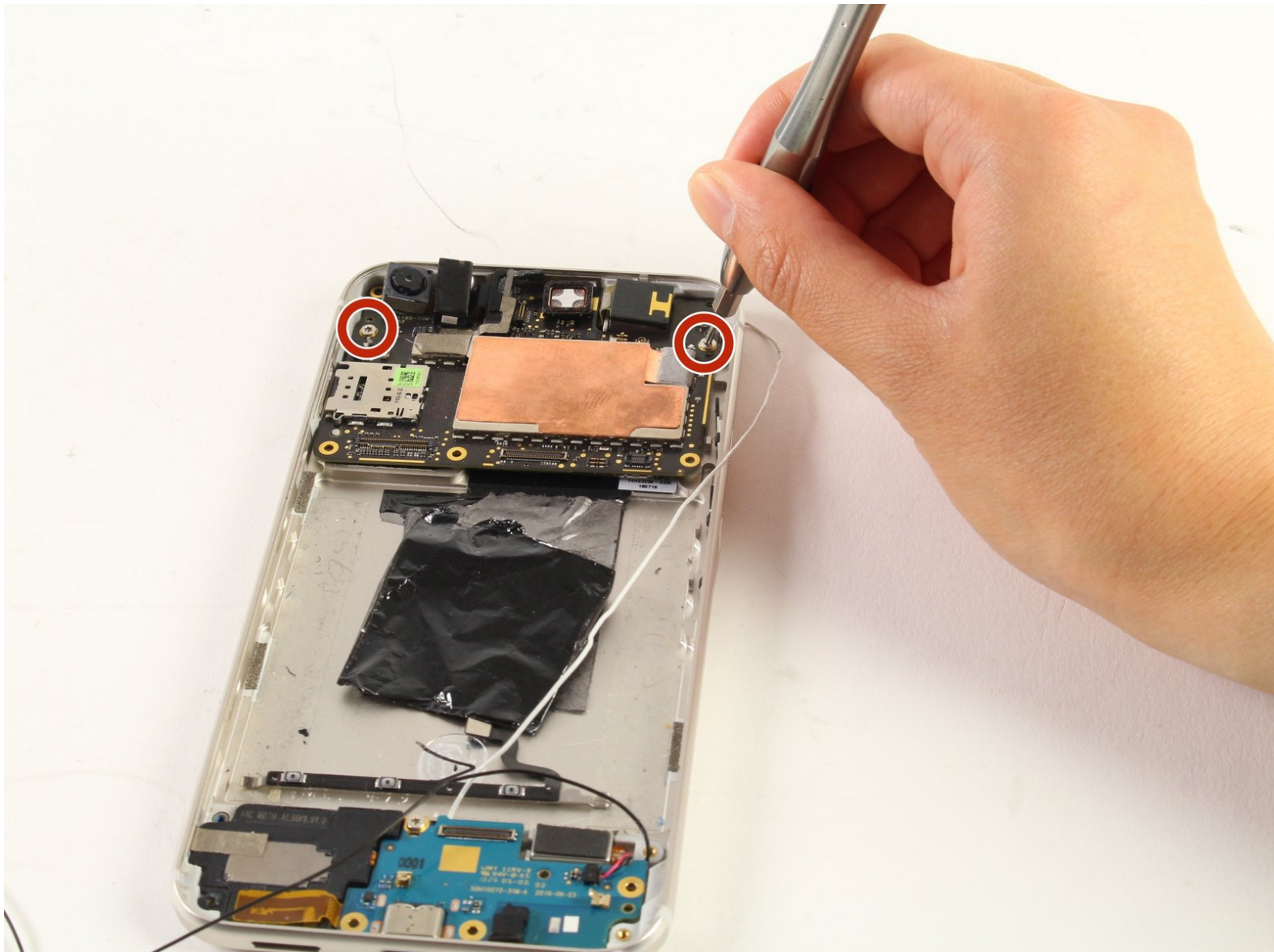




Google Pixel XL Fingerprint Scanner Replacement

This is a replacement guide for the fingerprint scanner on the Google Pixel XL.

Written By: Andrew Ferguson



INTRODUCTION

This guide will instruct you how to replace the fingerprint scanner on your Google Pixel XL. Secured in place with only light adhesive, the scanner can be easily removed once accessed.



TOOLS:

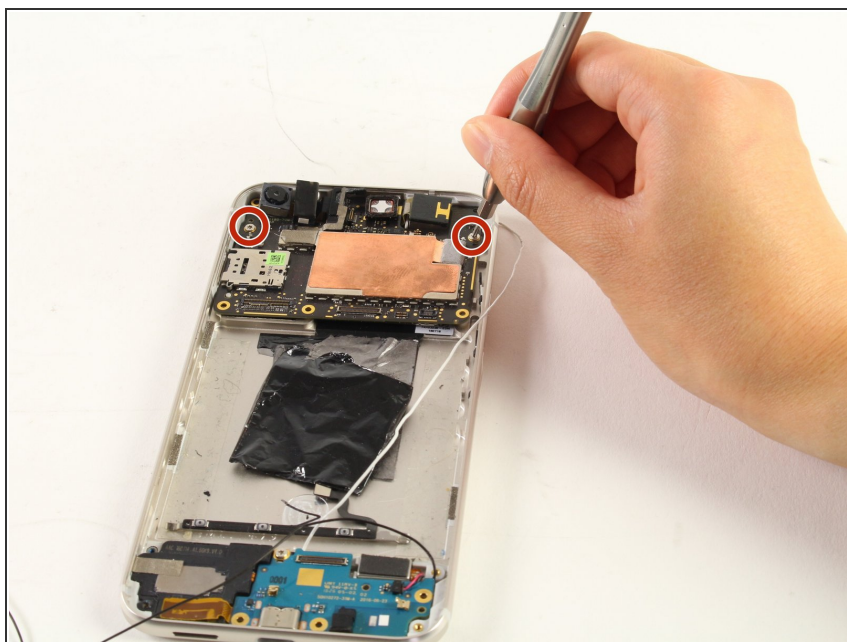
- [iFixit Opening Tools](#) (1)
- [Suction Handle](#) (1)
- [T5 Torx Screwdriver](#) (1)
- [SIM Card Eject Tool](#) (1)
- [Spudger](#) (1)



PARTS:

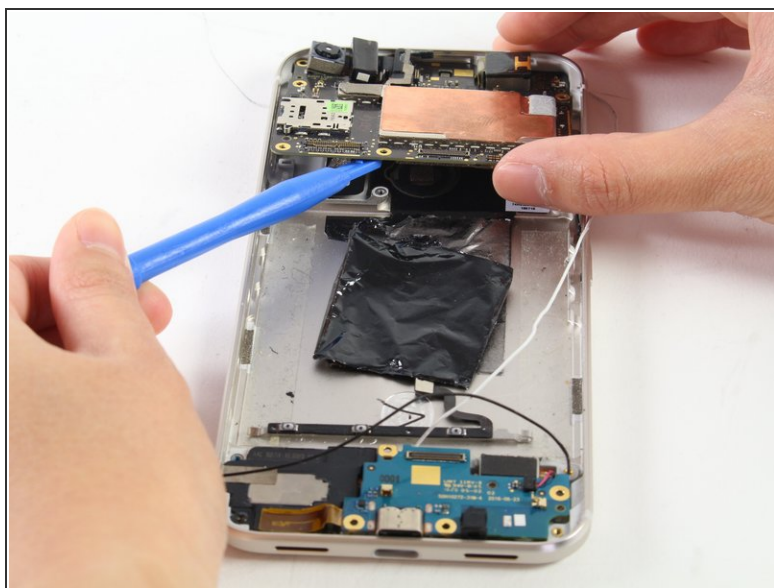
- [Google Pixel XL Fingerprint Sensor](#) (1)

Step 1 — Fingerprint Scanner



- Remove the two remaining 3mm T5 screws which secure the motherboard in place.

Step 2



- Slightly lift the motherboard using the plastic opening tool to access the connector which holds the motherboard from the bottom.
- Disconnect the connector by pulling it away from the board.

Step 3



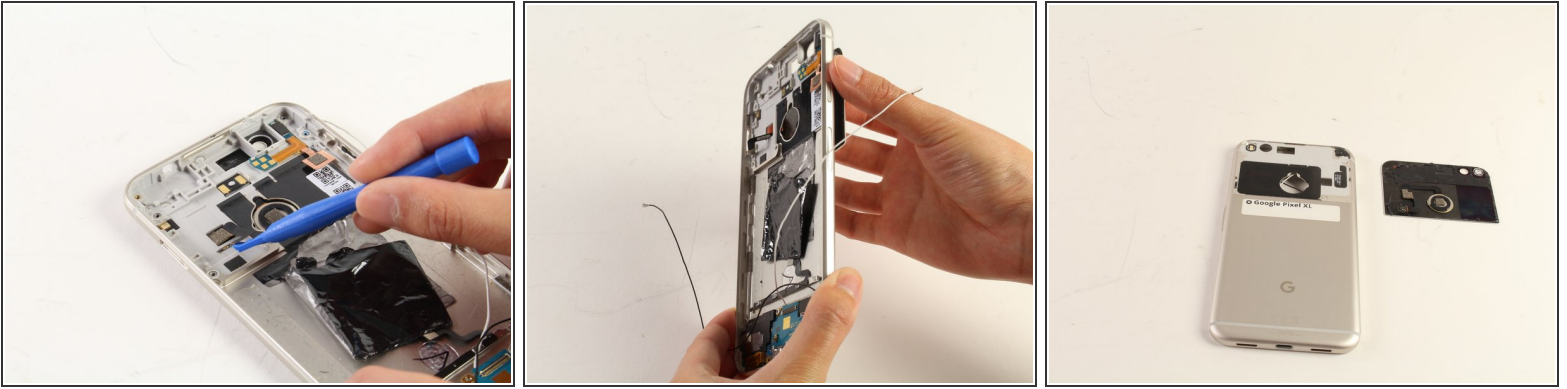
- Lift the motherboard out of the phone.

Step 4



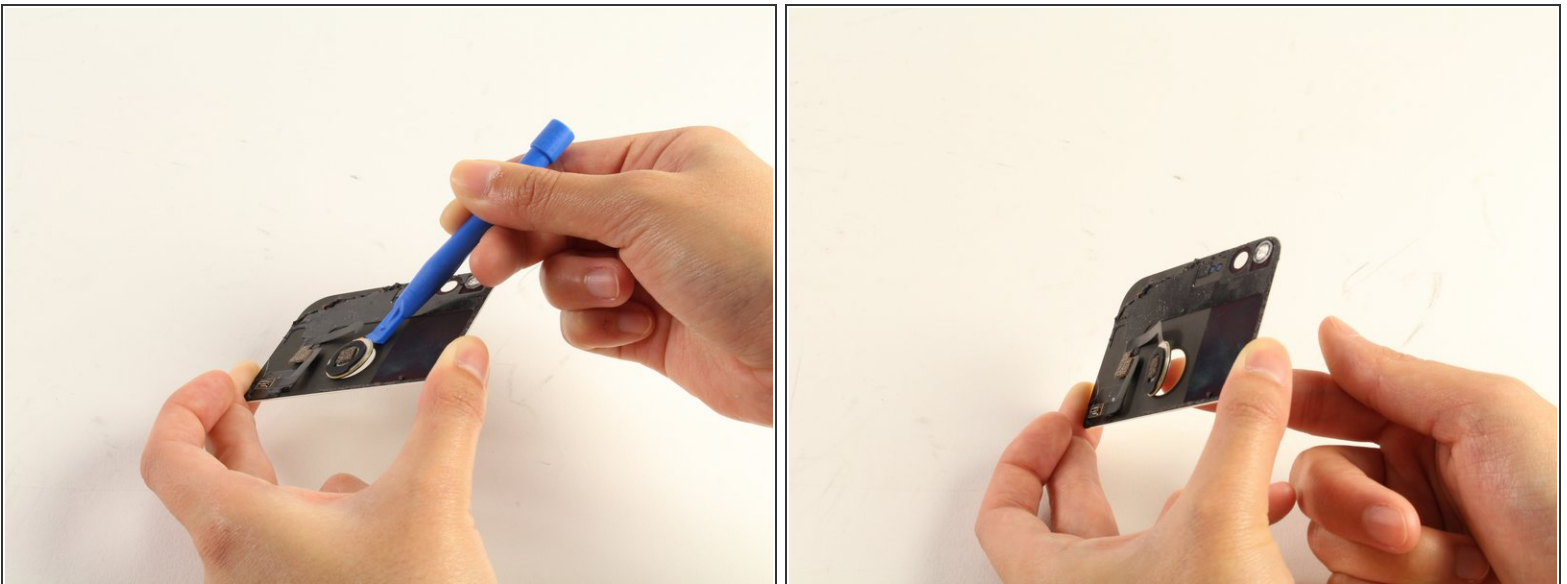
- ⚠ Be very careful when prying because it is possible for the glass to crack during this step.
- Insert the plastic opening tool underneath the glass panel on the back of the device and gently pry upwards around the seam.

Step 5



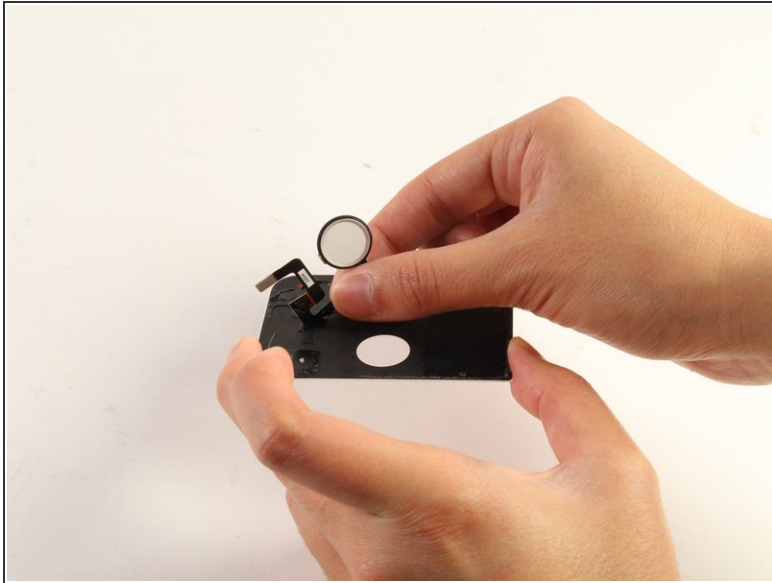
- Peel the ribbon cable that connects to the fingerprint scanner off of the sticky pads on the inside of the phone.
- Pull the glass panel out from the phone while routing the ribbon cable through the hole in the chassis.
- Keep the glass panel and place the rest of the phone off to the side.

Step 6



- Use the plastic opening tool to pry the fingerprint scanner out from the inside of the glass panel.
- ⓘ If the plastic opening tool is not working properly to remove the scanner, you may push it out with your finger.

Step 7



- Remove the fingerprint scanner completely from the back panel.

To reassemble your device, follow these instructions in reverse order.