



# Google Pixel XL Motherboard Replacement

Use this guide to replace the motherboard in your Google Pixel XL.

Written By: Julia List



## INTRODUCTION

If you're having issues with the overall functionality of your phone and are unable to diagnose the root cause, consider replacing the motherboard of your device.



### TOOLS:

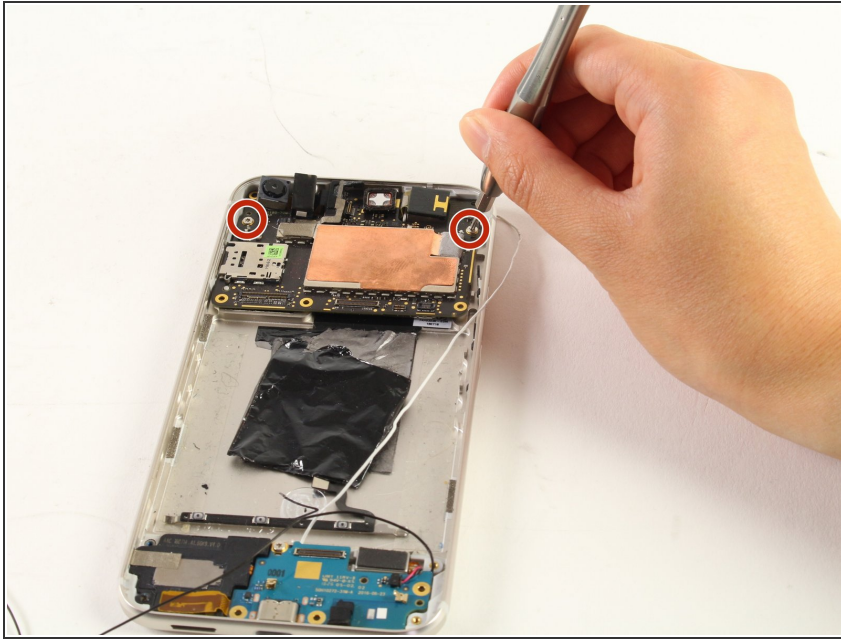
- [Suction Handle](#) (1)
- [T5 Torx Screwdriver](#) (1)
- [SIM Card Eject Tool](#) (1)
- [iOpener](#) (1)
- [Spudger](#) (1)



### PARTS:

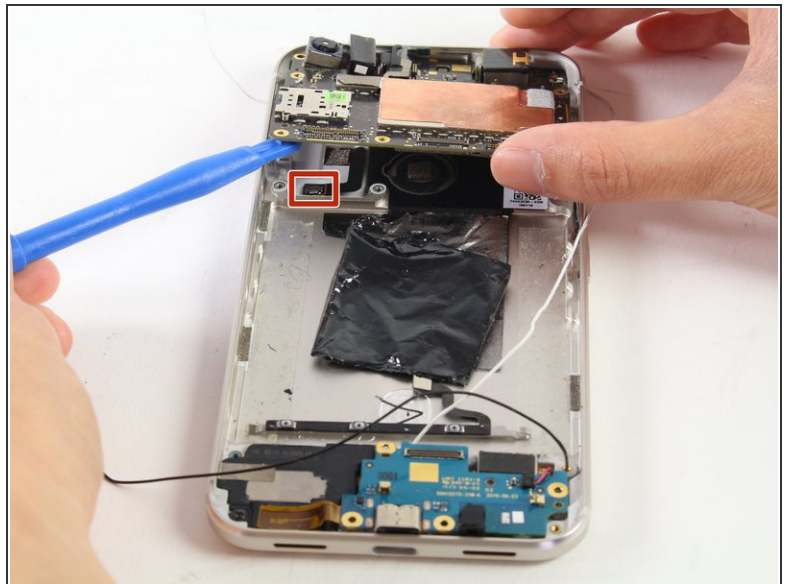
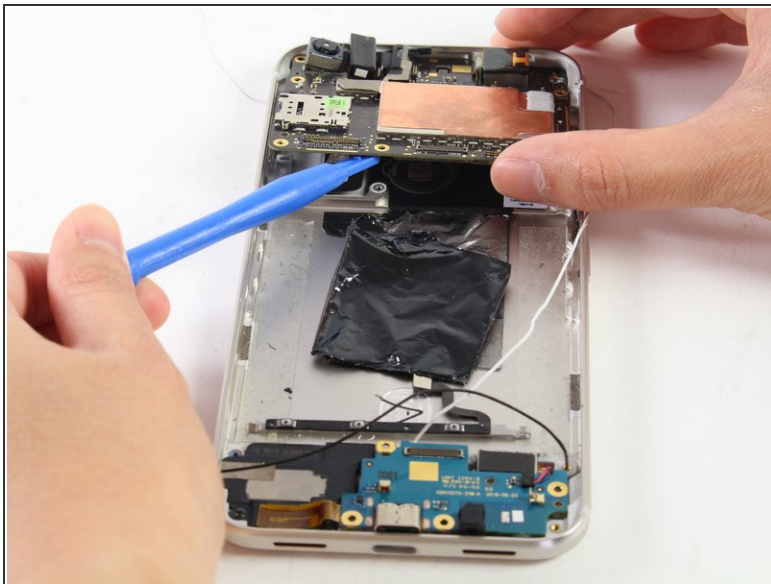
- [Google Pixel XL G-2PW2100 Motherboard](#) (1)

## Step 1 — Motherboard



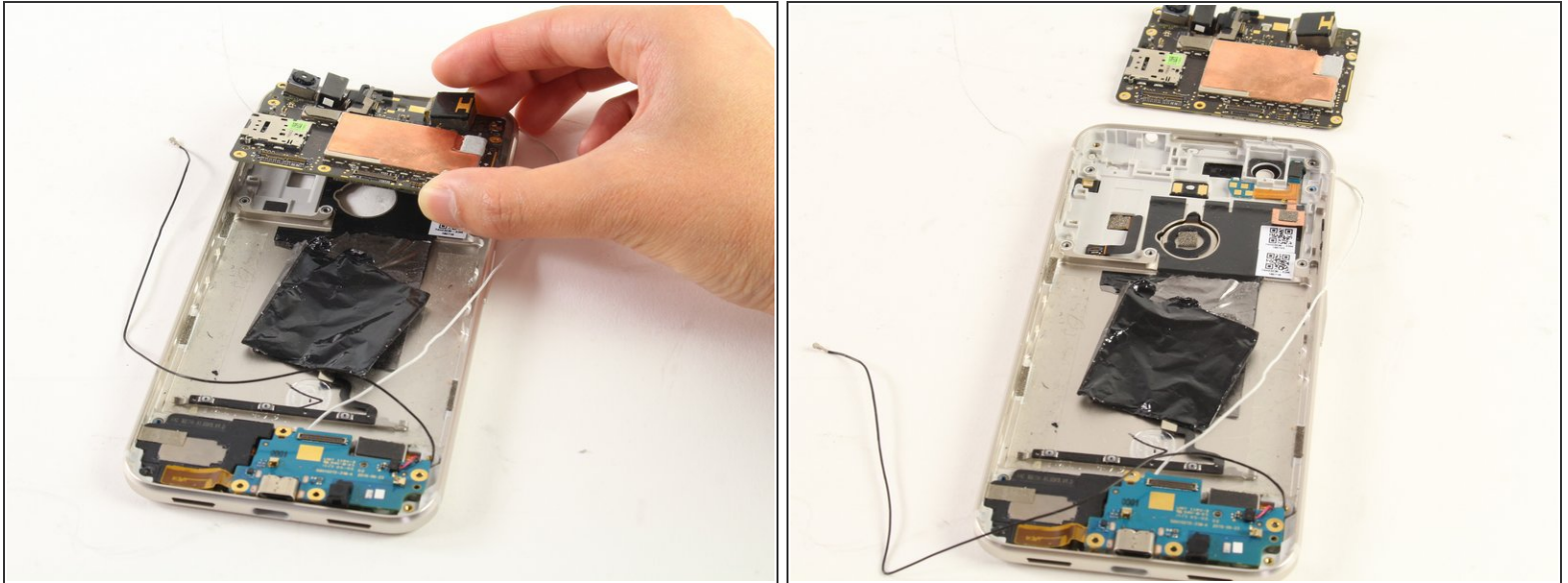
- Remove the two remaining 3mm T5 screws which secure the motherboard in place.

## Step 2



- Slightly lift the motherboard using the plastic opening tool to access the connector which holds the motherboard from the bottom.
- Disconnect the connector by pulling it away from the board.

## Step 3



- Using your fingers, lift the motherboard out of the phone.

To reassemble your device, follow these instructions in reverse order.