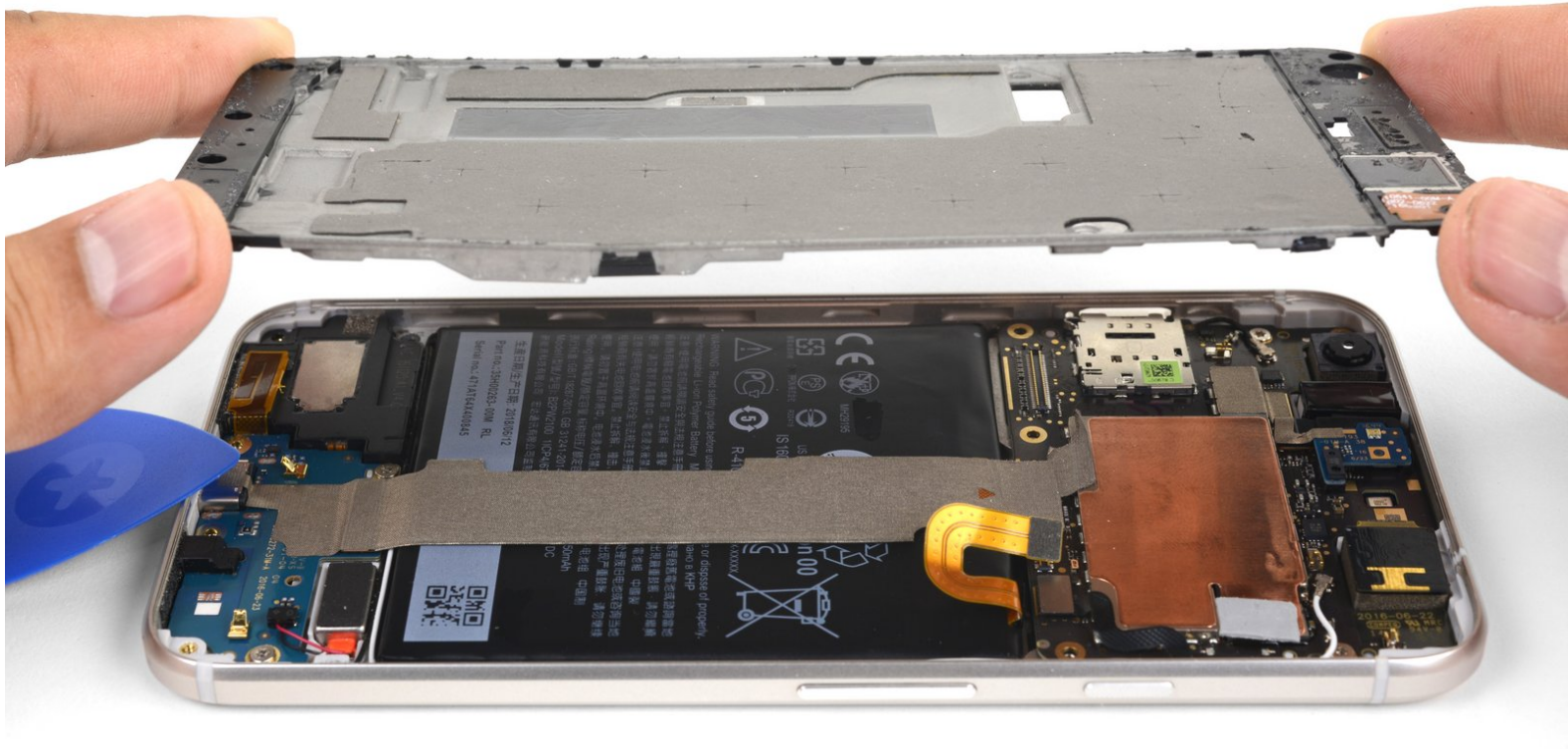




Google Pixel XL Opening Procedure

Prereq only! Opening procedure for the Google Pixel XL. Removes midframe.

Written By: Arthur Shi



INTRODUCTION

Prereq only! Opening procedure for the Google Pixel XL. Removes midframe.

The Pixel XL's unreinforced display panel is fragile and is attached to the frame with strong adhesive, making repairs difficult. There is a considerable chance of breaking the display, especially if it already has micro-fractures. Be sure to apply plenty of heat and be extremely careful during the prying stage.



TOOLS:

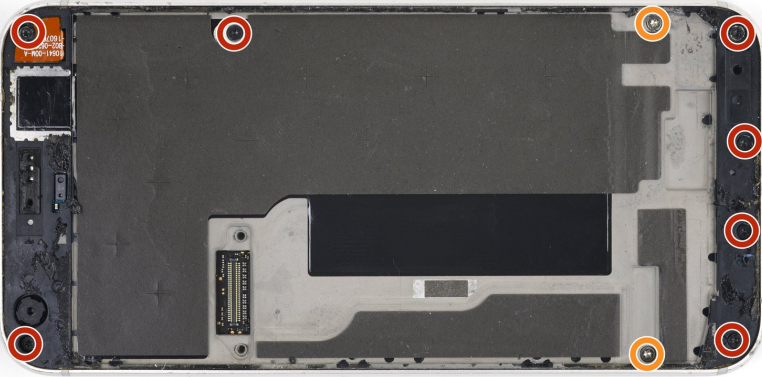
- [iOpener](#) (1)
- [iFixit Opening Picks set of 6](#) (1)
- [T5 Torx Screwdriver](#) (1)



PARTS:

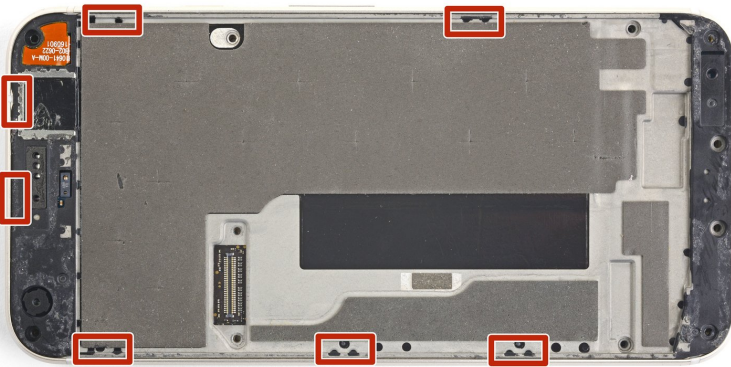
- [Google Pixel XL Display Adhesive](#) (1)

Step 1 — Google Pixel XL Opening Procedure



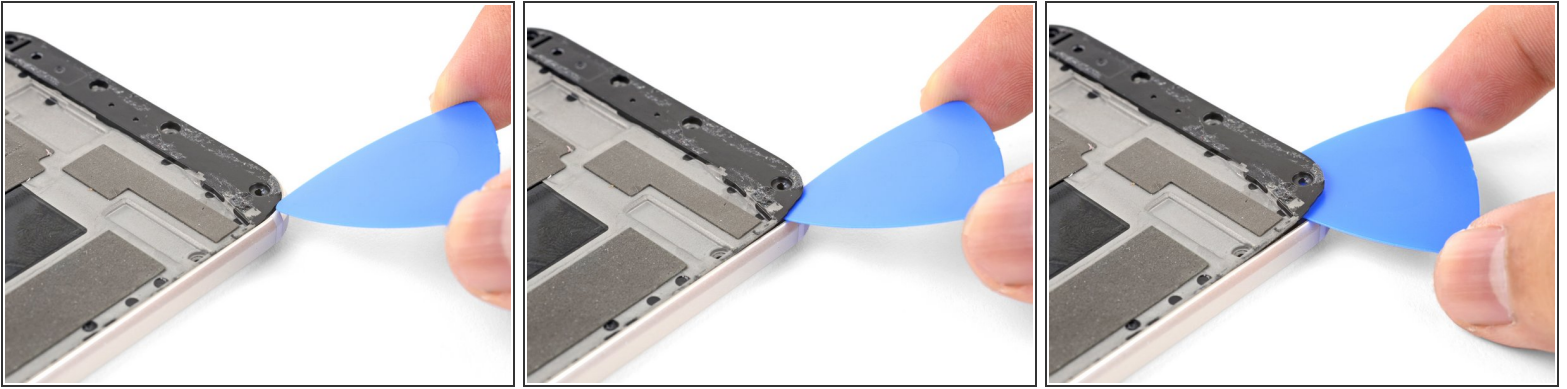
- Remove the following screws that secure the midframe to the back:
 - Seven black 4 mm T5 screws
 - Two silver 3 mm T5 screws

Step 2



- The midframe is held tightly in place by plastic clips which push into the edge of the back case.

Step 3



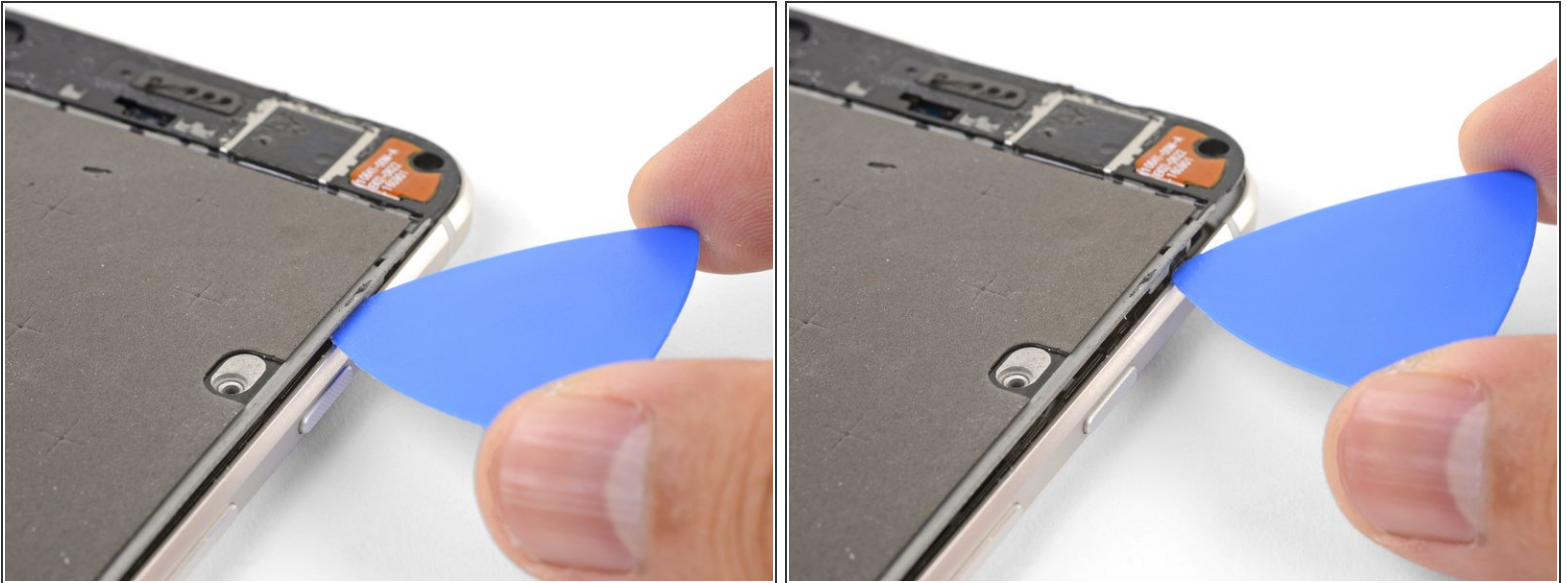
- Find the small notch in the bottom left corner of the frame and insert an opening pick.
- Slide the opening pick along the bottom edge of the phone towards the bottom right corner and leave it there.

Step 4



- Insert a separate opening pick into the right edge of the phone, near the bottom.
- Slowly push the pick upwards along the seam until the first clip pops free.
 - ❗ Due to the tight tolerances, this may be difficult, requiring a substantial amount of force. If you are having trouble, try [inserting and sliding a playing card](#).
- Once you've released the clip, leave the opening pick in place to prevent the midframe from resealing.

Step 5




- Insert an opening pick into the right edge of the phone and slide it upwards towards the top right clip.
 - ⓘ You do not need to insert the pick more than 2 mm into the edge. If you insert the pick all the way in, you may risk damaging flex cables.
- Slowly slide the pick past the clip to disengage it from the frame.
 - ⓘ At this point, the right edge of the midframe should be free from the case. If it isn't, slide an opening clip up and down along the right edge.

Step 6



- Grasp the right edge of the midframe by the corners and slowly hinge the edge up.
- When the left edge feels loose, stop hinging and lift the midframe upwards.
- Remove the midframe.

 To reinstall the midframe, align it to the case, then [squeeze around the perimeter](#) until all the clips snap back into position. When properly done, the midframe should lie flat.

To reassemble your device, follow these instructions in reverse order.