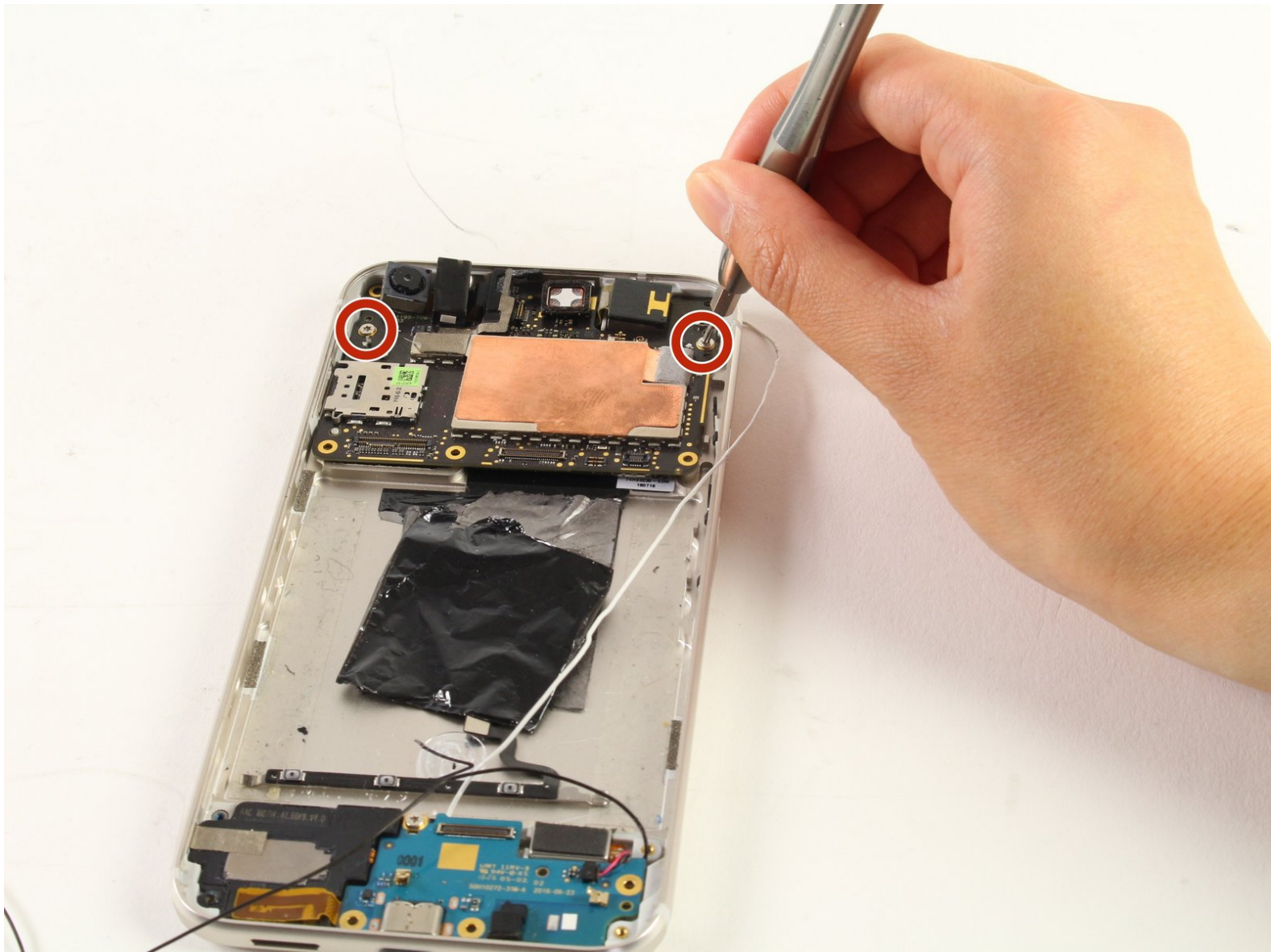




# Google Pixel XL Rear Facing Camera Replacement

This guide will teach how to replace the rear facing camera on the Google Pixel XL

Written By: Andrew Ferguson



# INTRODUCTION

This guide will teach you how to replace the rear facing camera on your Google Pixel XL. The steps should be easy to follow and the rear facing camera will be found on the motherboard of the device.



## TOOLS:

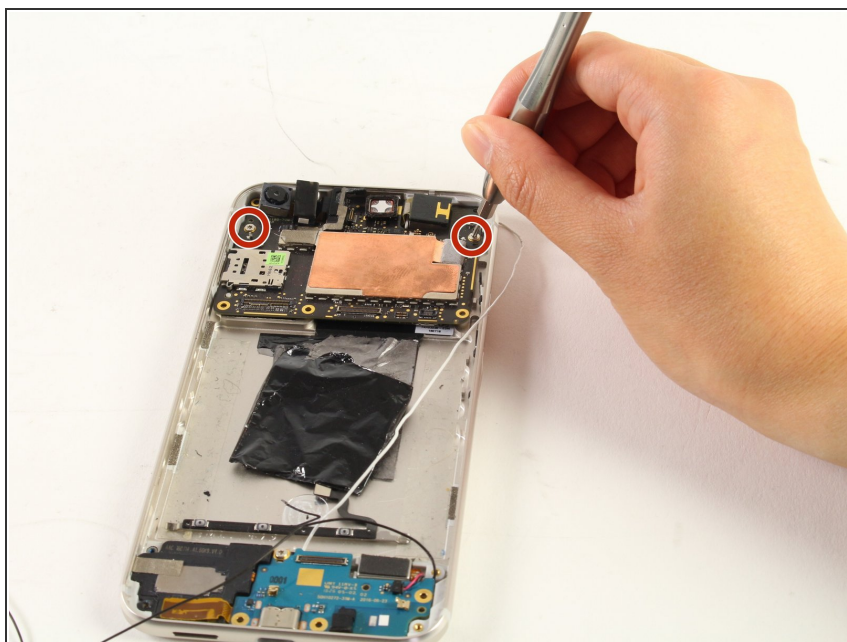
- [iFixit Opening Tools](#) (1)
- [Suction Handle](#) (1)
- [T5 Torx Screwdriver](#) (1)
- [SIM Card Eject Tool](#) (1)
- [Spudger](#) (1)



## PARTS:

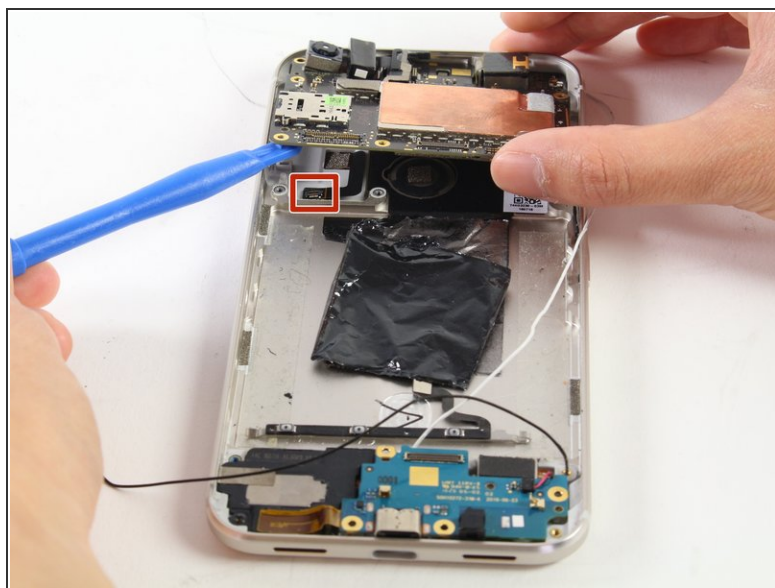
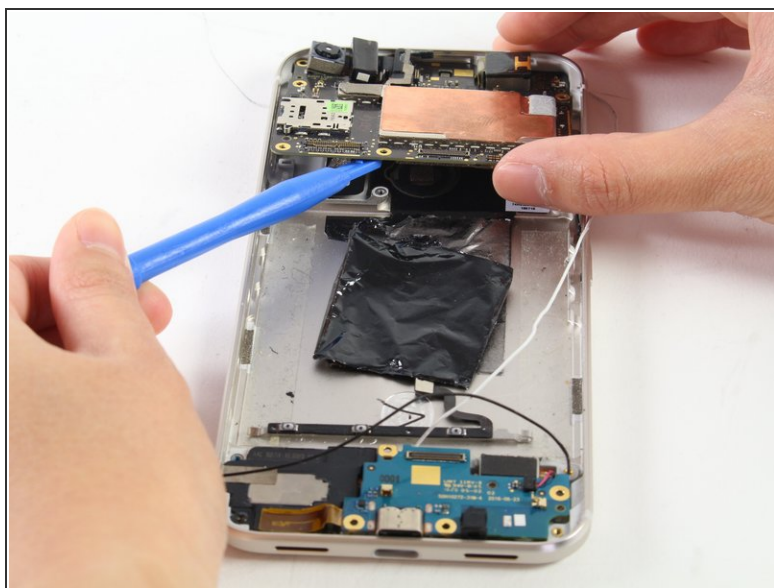
- [Google Pixel Rear Camera](#) (1)

## Step 1 — Rear Facing Camera



- Remove the two remaining 3mm T5 screws which secure the motherboard in place.

## Step 2



- Gently lift the motherboard slightly to access the connector which holds the motherboard from the bottom.
- Disconnect the connector by pulling it away from the board.

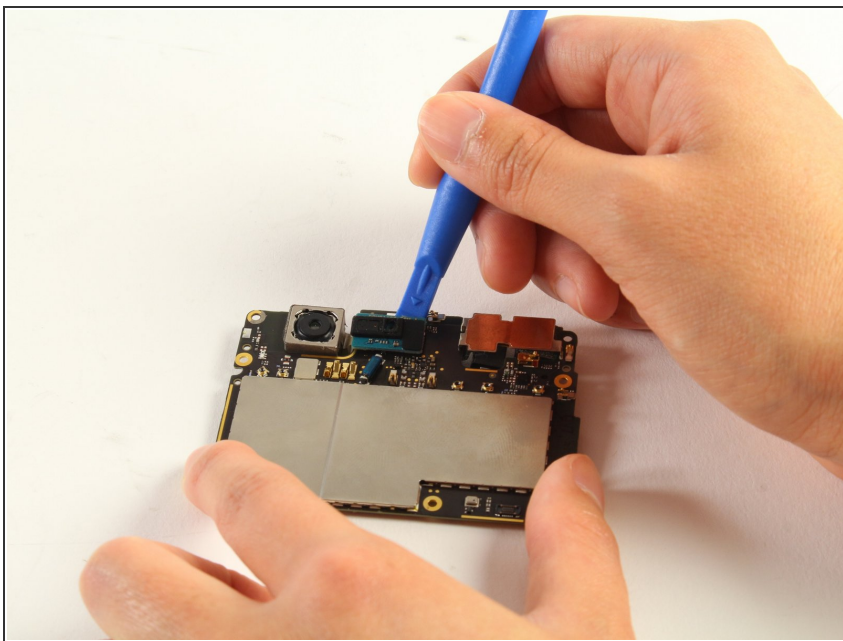


### Step 3



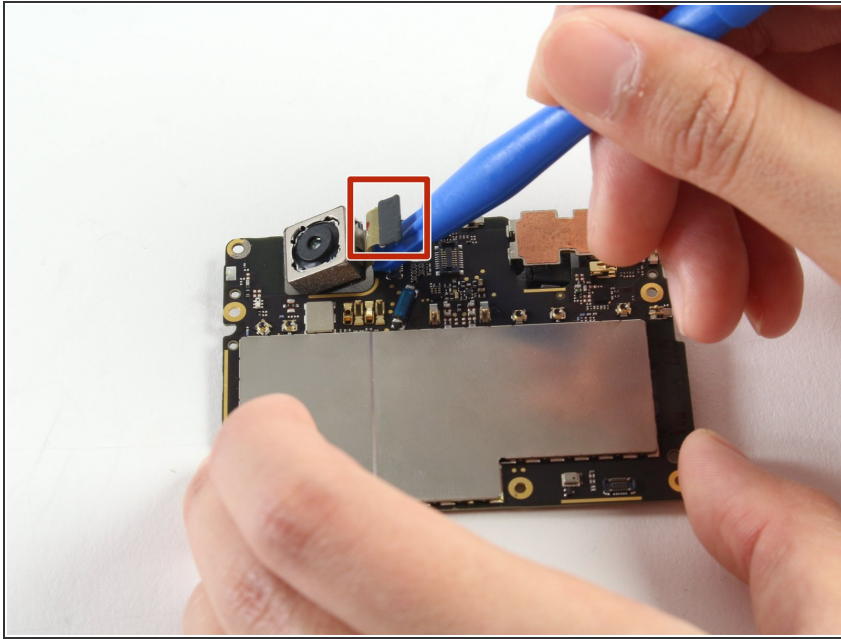
- Once the connector is removed, lift the motherboard out of the phone.

### Step 4



- Orient the motherboard so that the large rear camera is on the top and facing upwards.
- On the motherboard, remove the small blue board by prying it off with the plastic opening tool.

## Step 5



- Using the plastic opening tool, undo the small connector which holds the camera in place.
- Remove the camera from the board by gently lifting it off.

To reassemble your device, follow these instructions in reverse order.