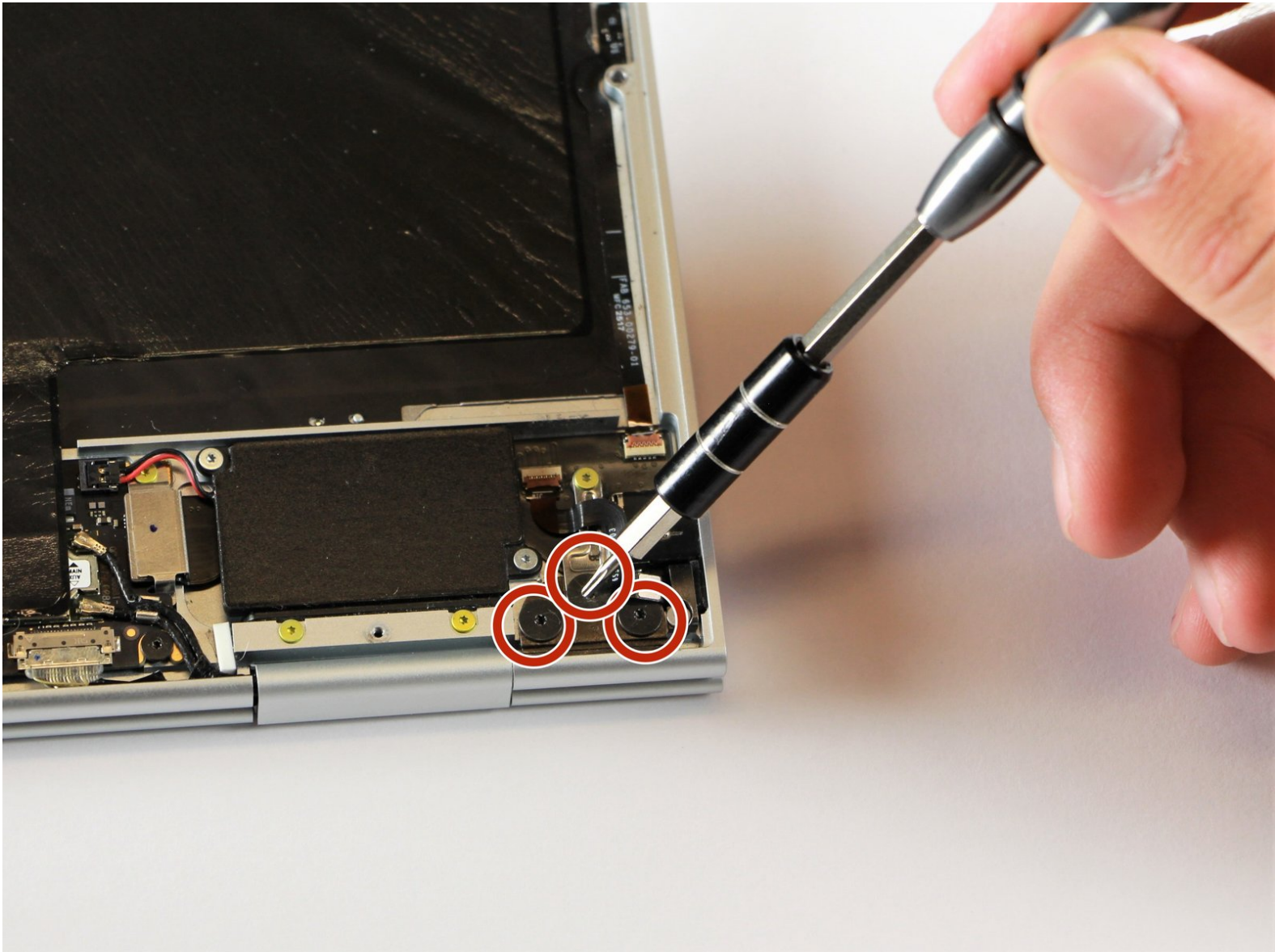




# Google Pixelbook Right Charging Port Replacement

How to replace a Google Pixelbook right charging port.

Written By: Alon Gary



# INTRODUCTION

In this guide, you will learn how to replace the right charging port on your Google Pixelbook to fix charging issues.

---

## TOOLS:

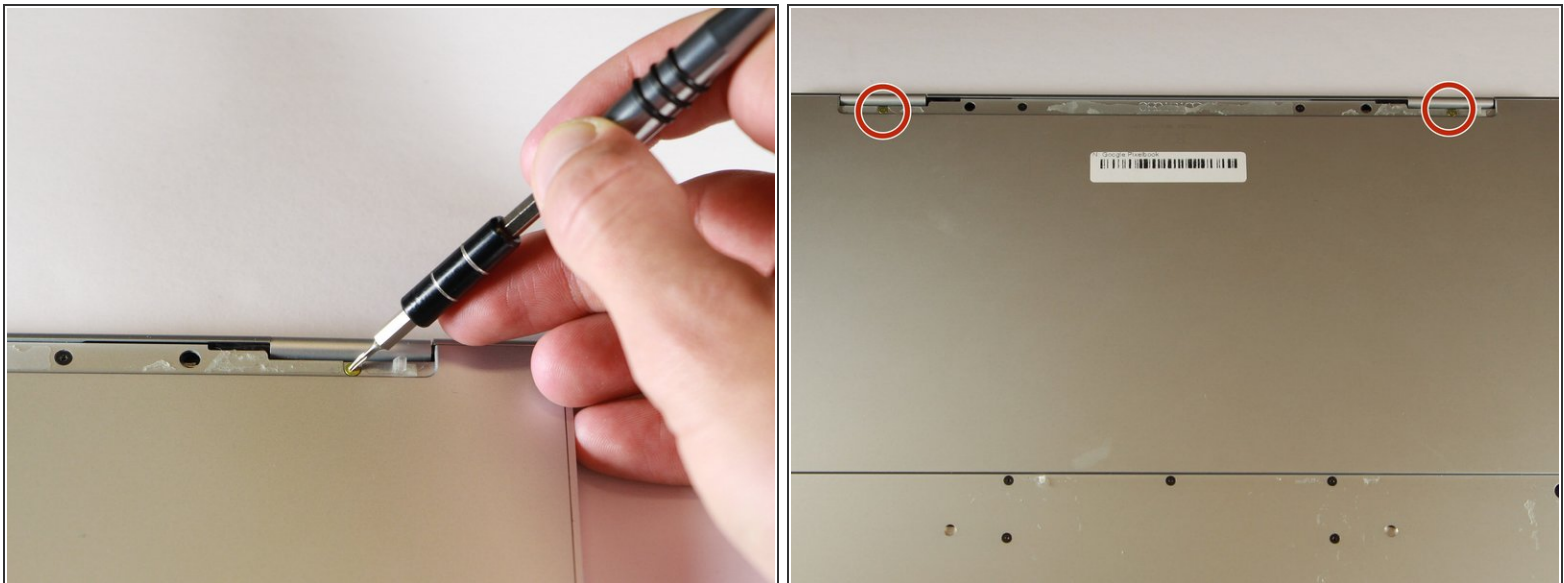
- [Spudger](#) (1)
  - [iFixit Opening Tools](#) (1)
  - [Metal Spudger \(optional\)](#) (1)
  - [T3 Torx Screwdriver](#) (1)
  - [T5 Torx Screwdriver](#) (1)
  - [Tweezers](#) (1)
-

## Step 1 — Battery (Back Panel)



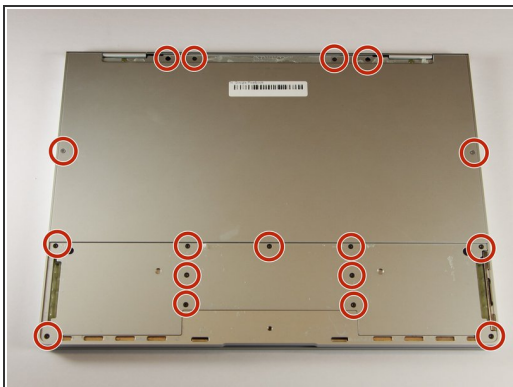
- Use the iFixit opening tools or a metal spudger to pry the rubber covers off the back of your Pixelbook.
- Peel the linings off completely until the back of the Pixelbook looks bare.

## Step 2



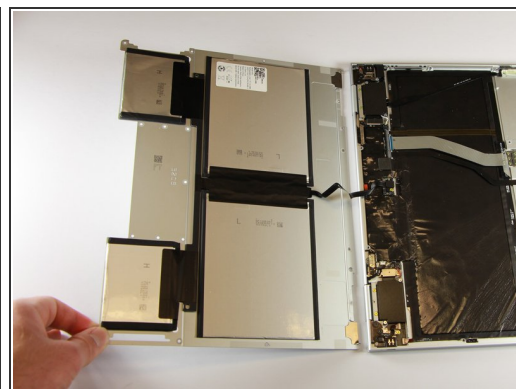
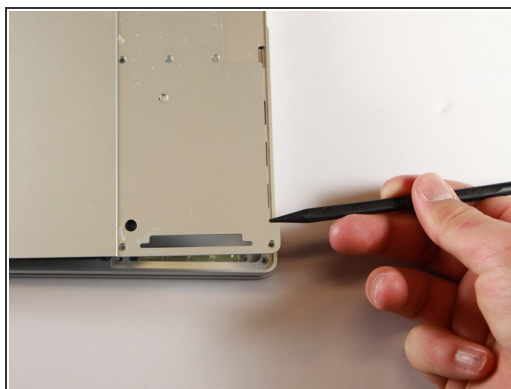
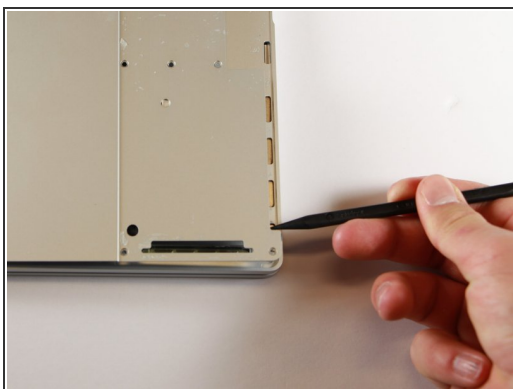
- Remove the two yellow 2.0mm screws by using a T3 Torx screwdriver.

## Step 3



- Remove the seventeen 3.0mm T5 Torx screws from the bottom panel.

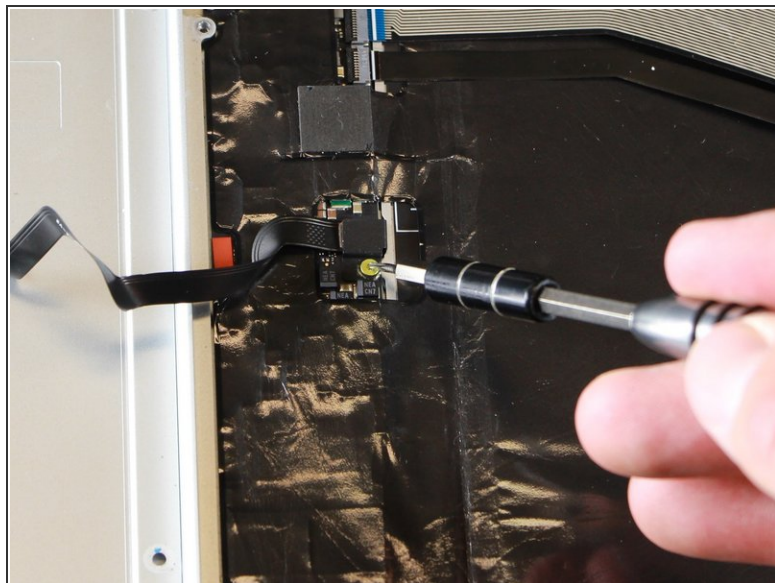
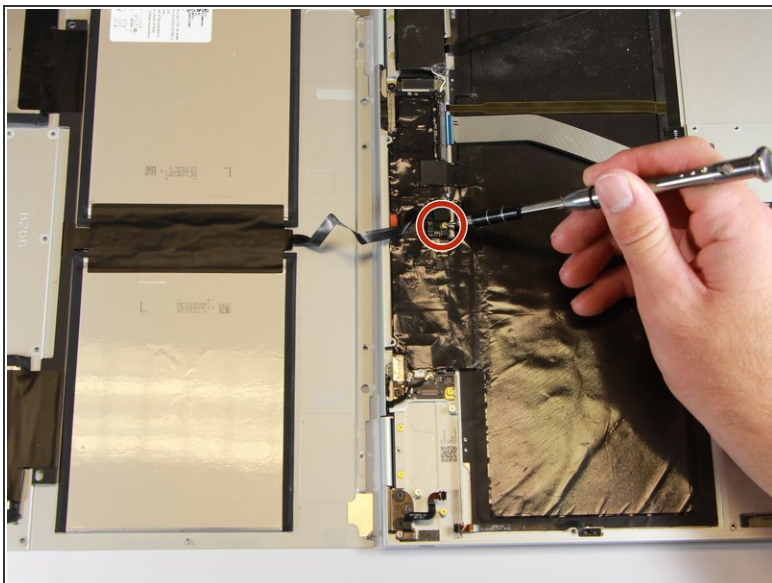
## Step 4



- Use the nylon spudger to pry the edge of the Pixelbook up until you can grab the edge with your fingers.
- Open the back panel completely and lay it flat so you see the whole inside of the computer.

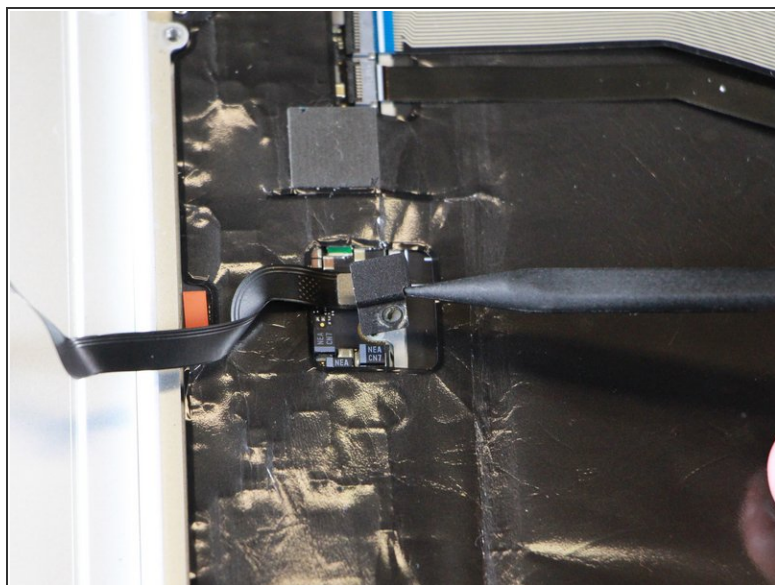
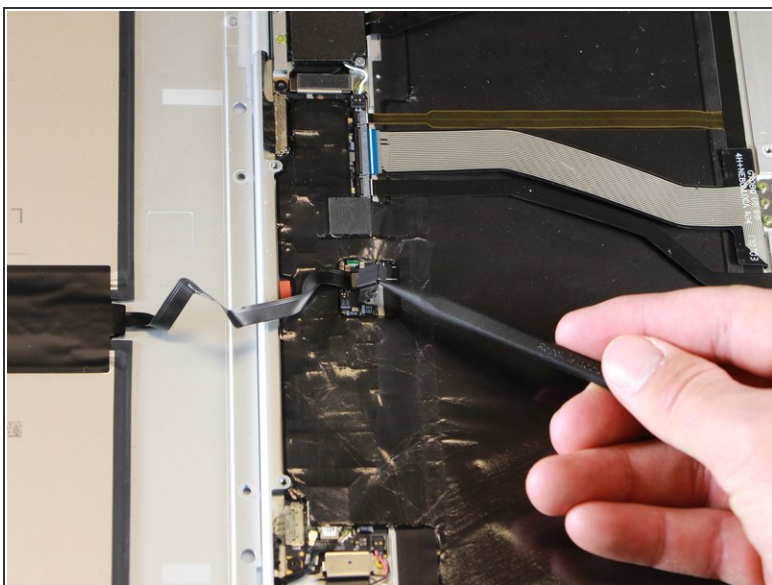


## Step 5



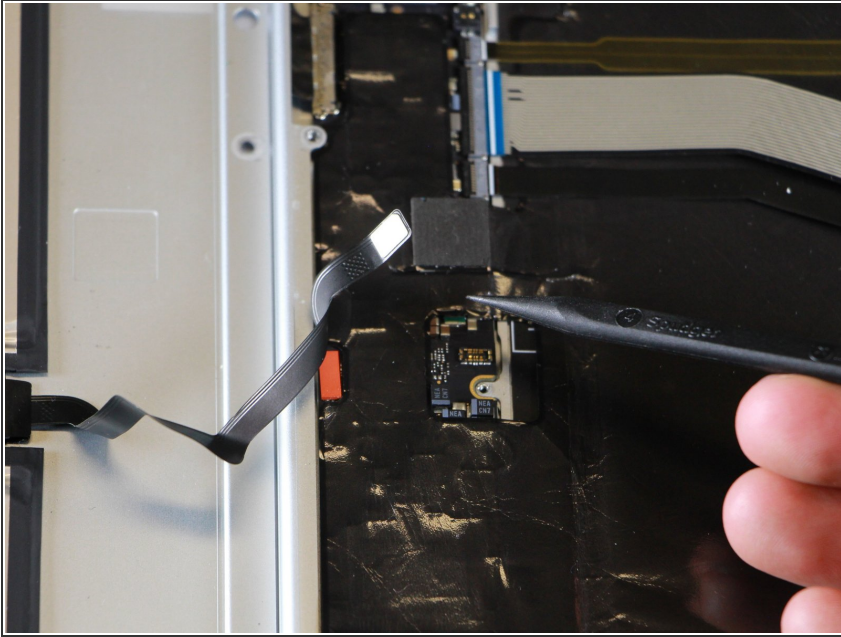
- Remove the yellow 2.0mm screw from the middle of the panel by using the T3 Torx screwdriver to turn the screw counterclockwise.

## Step 6



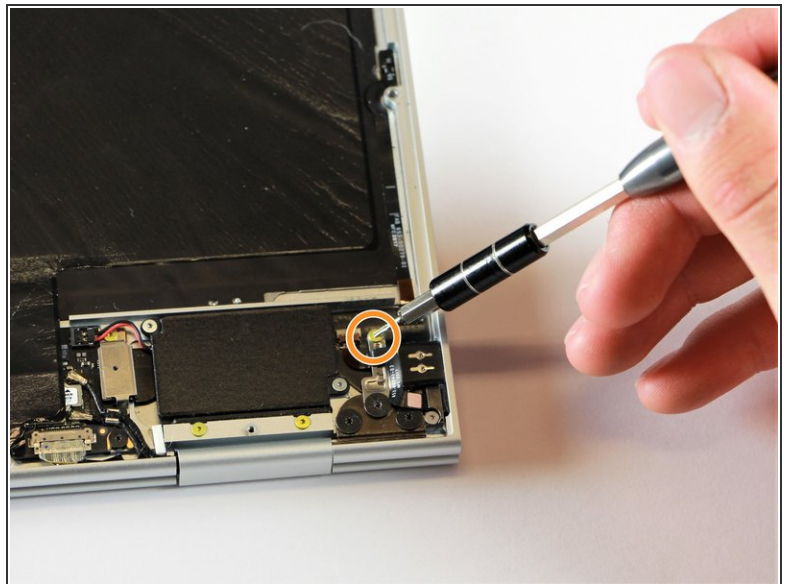
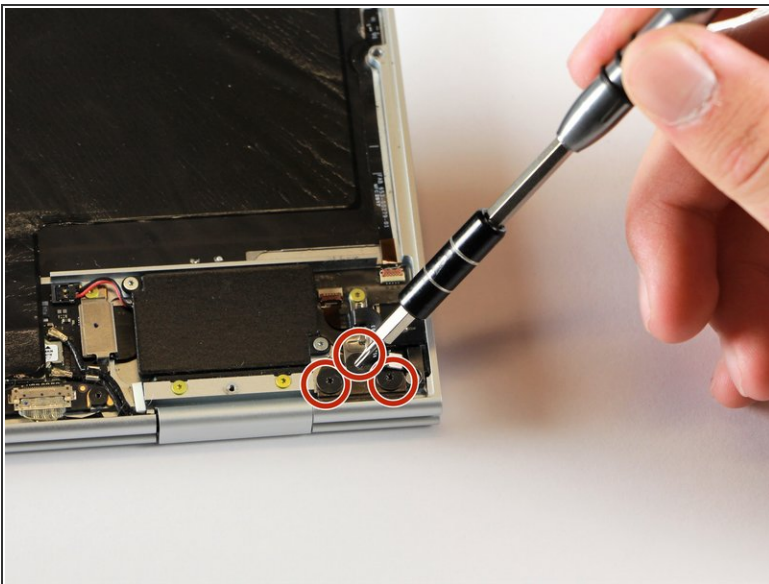
- Remove the small, black casing by using the spudger to lift it up from its place.

## Step 7



- Disconnect the flat, black cord from the main component by using a spudger to push it out of the slot, or by using your hand to carefully pull it out.
- Your back panel is now free from the main component.

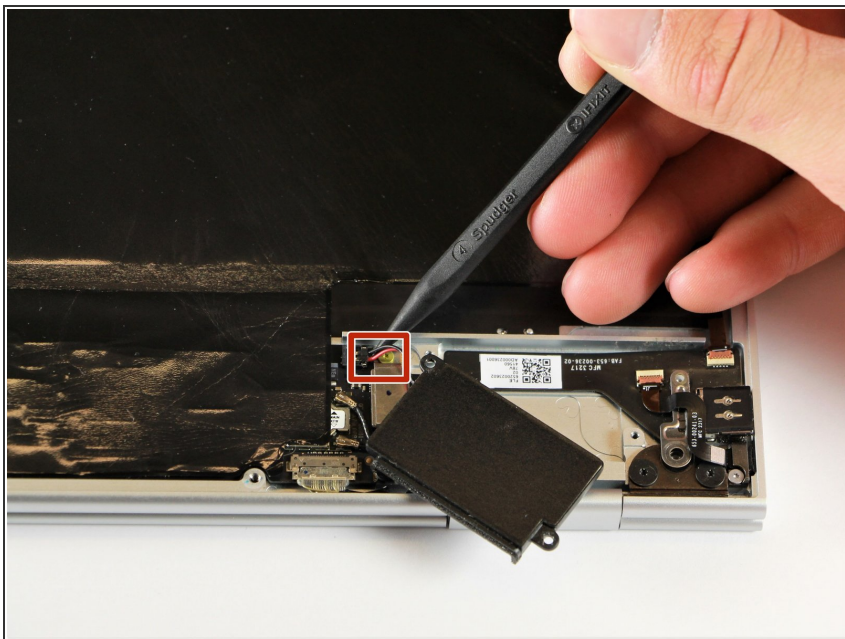
## Step 8 — Right Charging Port



- Remove the three 2.0mm black screws from the sound card by using a T5 Torx screwdriver to turn them counterclockwise.
- Remove the gold 3.0mm screw by using a T3 Torx screwdriver to turn it counterclockwise.

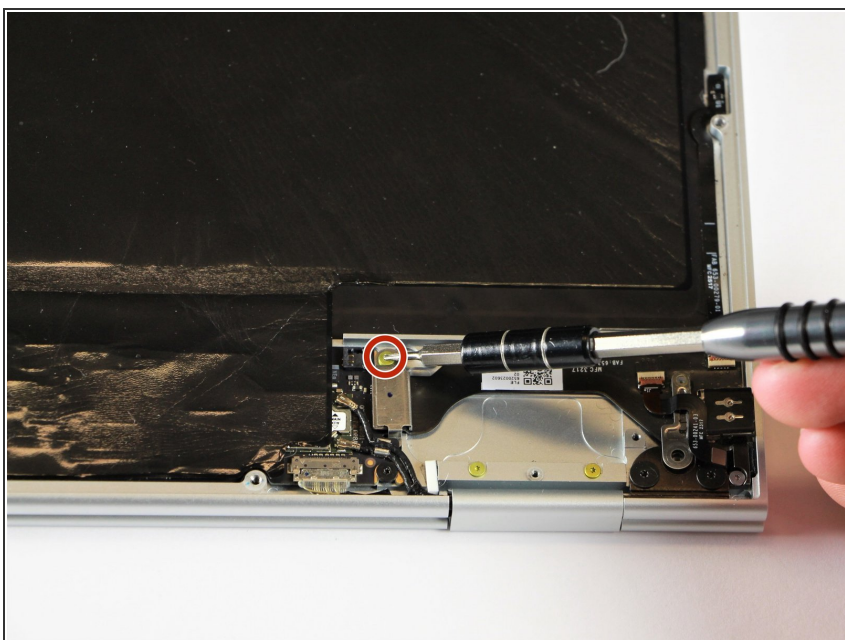


## Step 9



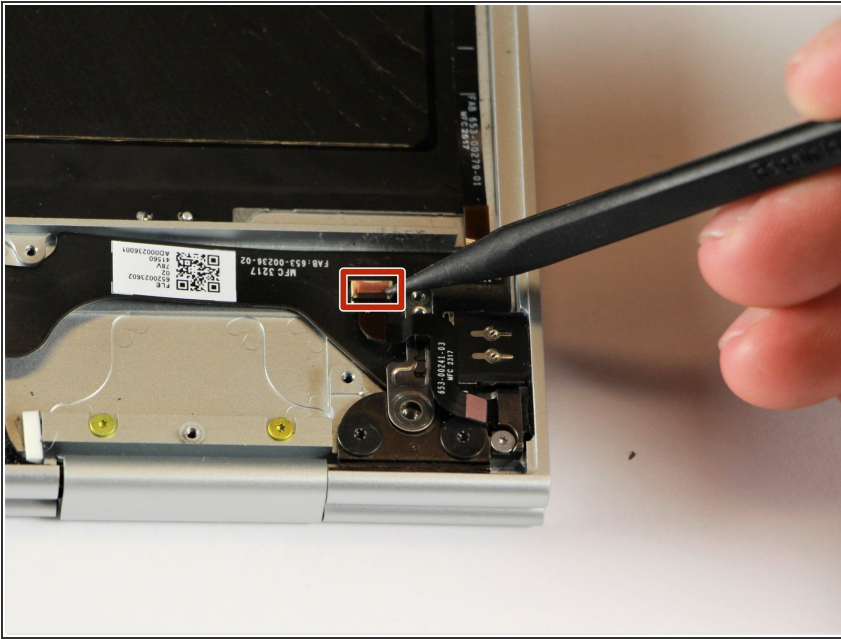
- Disconnect the thin, black and red cord from the motherboard by using the spudger to snap the connector up and out of place.

## Step 10



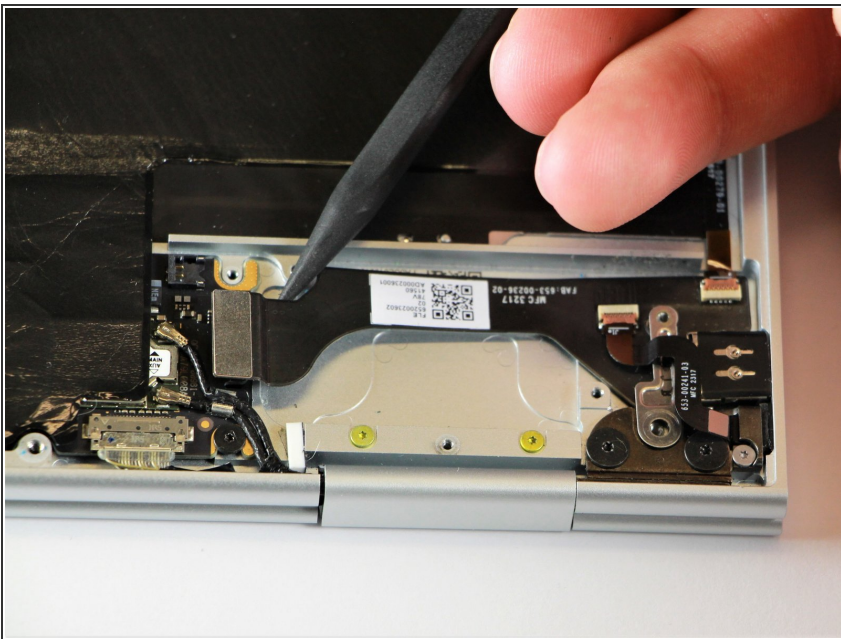
- Remove the yellow 2.0mm screw by using the T3 Torx screwdriver to turn the screw counterclockwise.

## Step 11



- Remove the small, red component by lifting it up with the spudger.

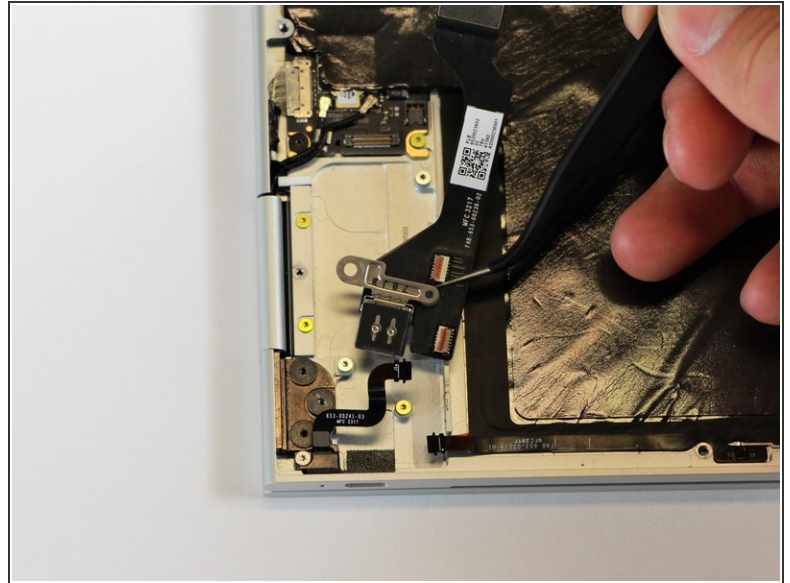
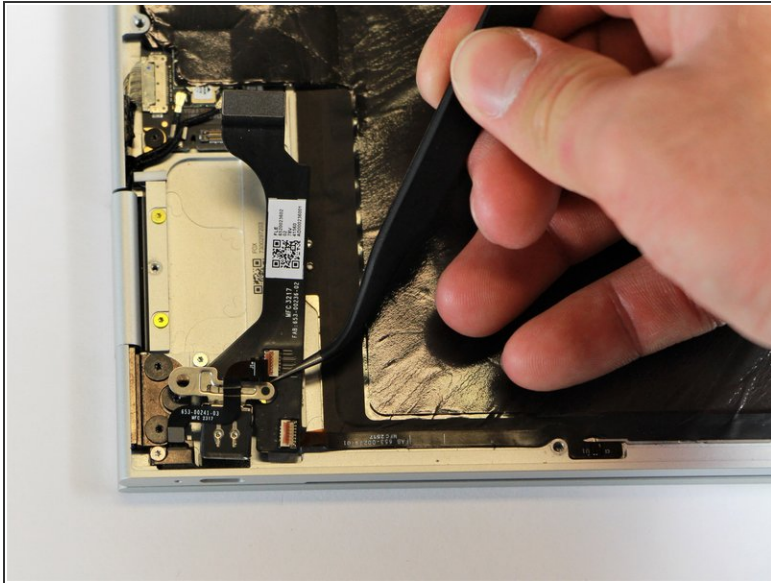
## Step 12



- Disconnect the metal component of the thin, black component by lifting it up with the spudger.



## Step 13



- Remove the right charging port by picking it up with the tweezers and lifting it from the computer.

To reassemble your device, follow these instructions in reverse order.