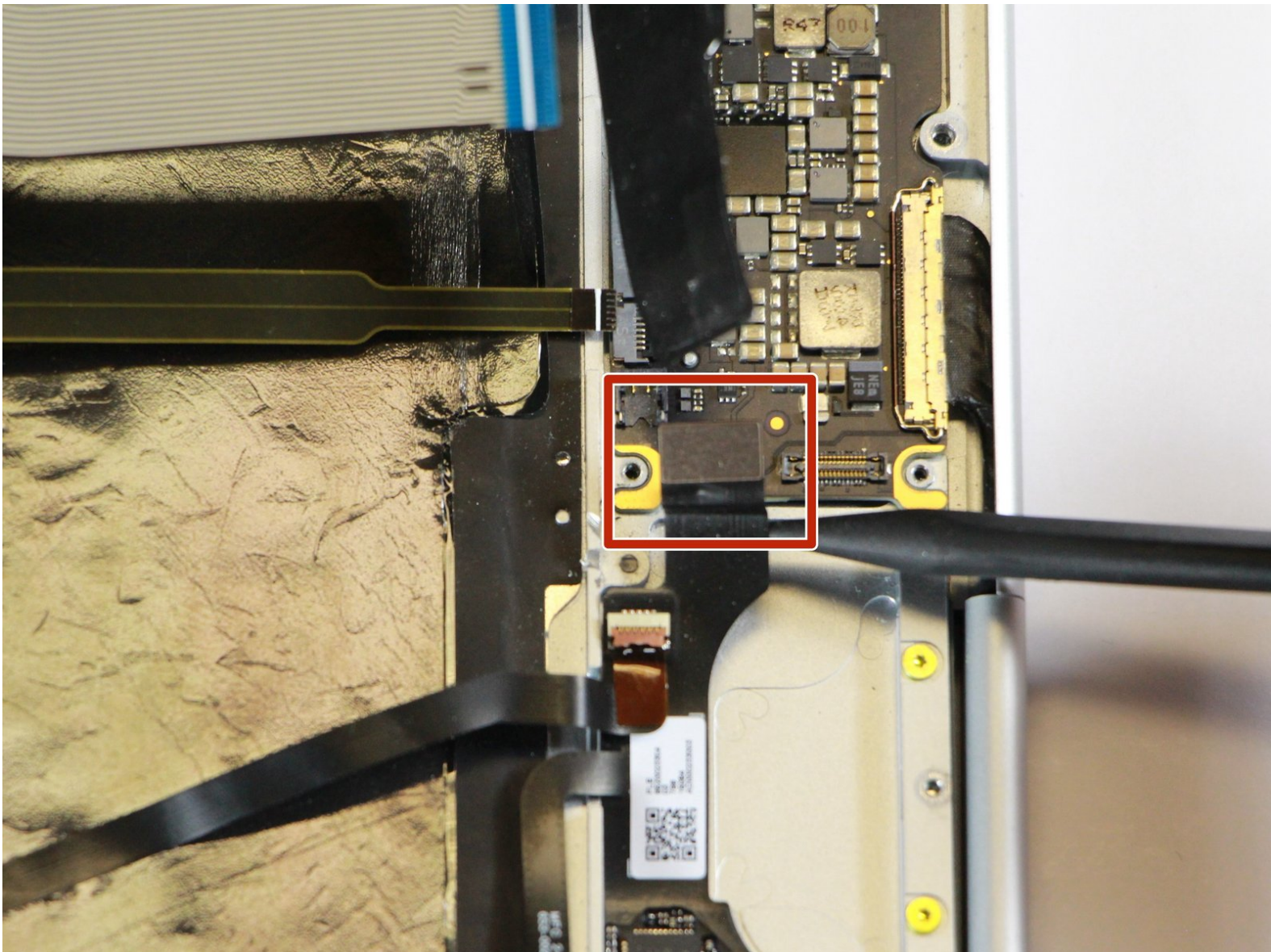




# Google Pixelbook Sound Card Replacement

How to replace a Google Pixelbook soundcard.

Written By: Derrick Unger



---

# INTRODUCTION

In this guide, you will learn how to replace the sound card.



## TOOLS:

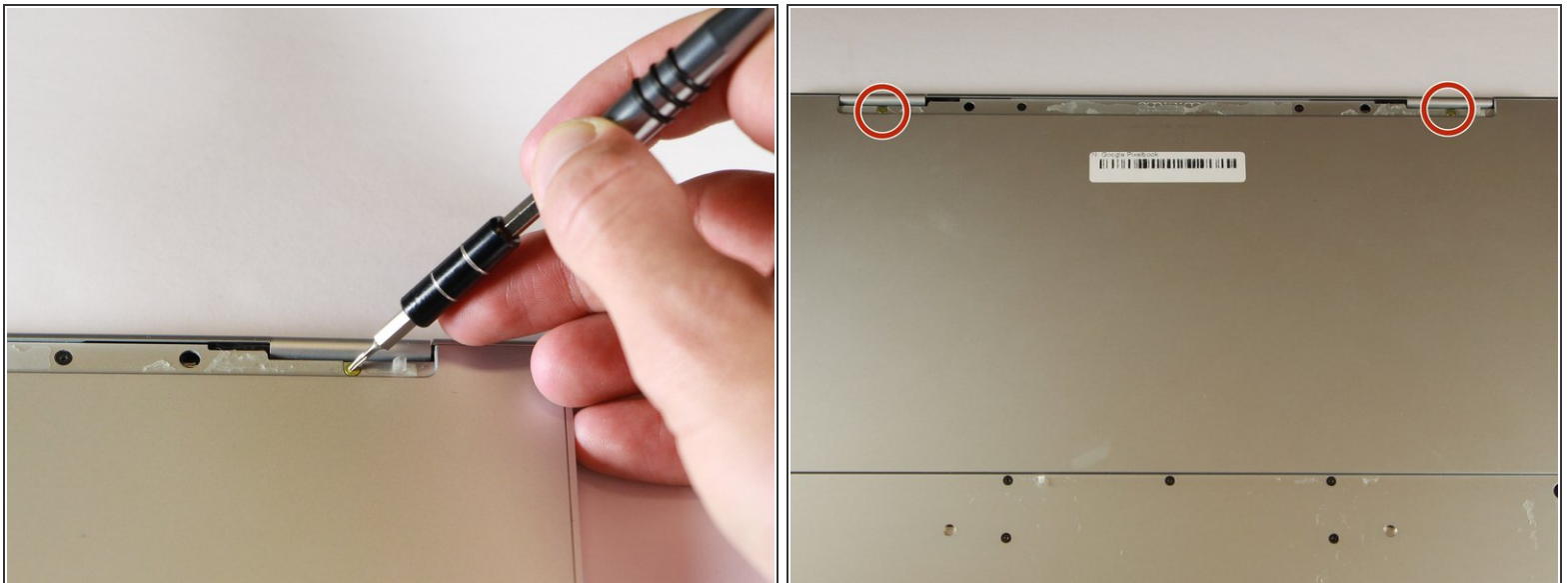
- [iFixit Opening Tools](#) (1)
  - [Metal Spudger \(optional\)](#) (1)
  - [T3 Torx Screwdriver](#) (1)
  - [Spudger](#) (1)
  - [Tweezers](#) (1)
  - [T5 Torx Screwdriver](#) (1)
-

## Step 1 — Battery (Back Panel)



- Use the iFixit opening tools or a metal spudger to pry the rubber covers off the back of your Pixelbook.
- Peel the linings off completely until the back of the Pixelbook looks bare.

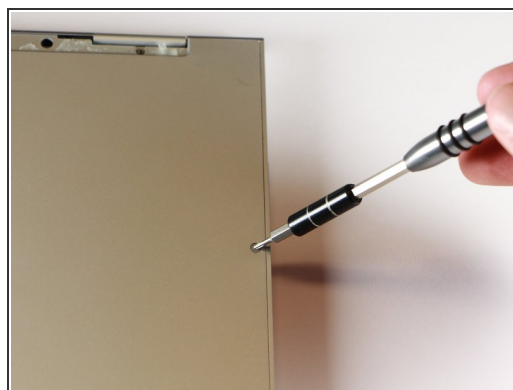
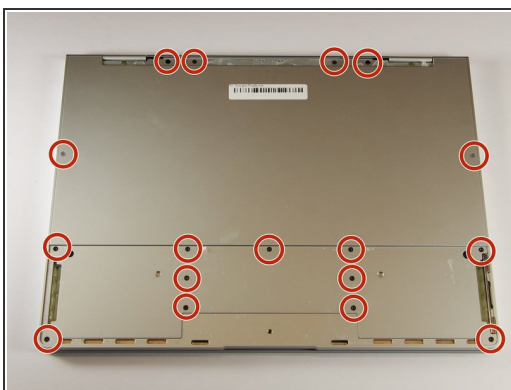
## Step 2



- Remove the two yellow 2.0mm screws by using a T3 Torx screwdriver.

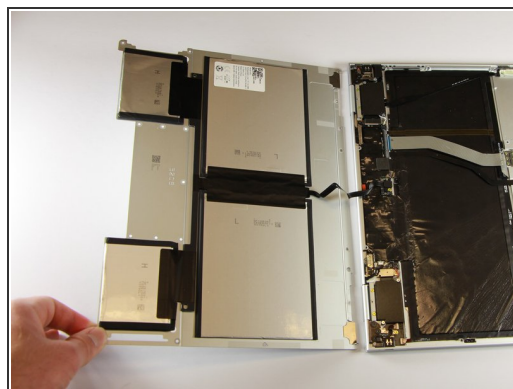
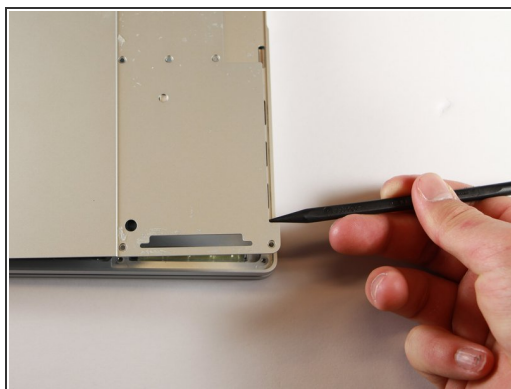
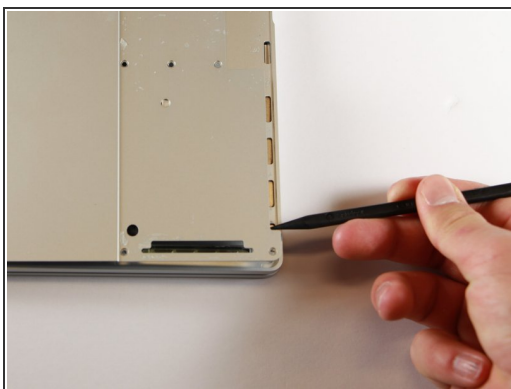


## Step 3



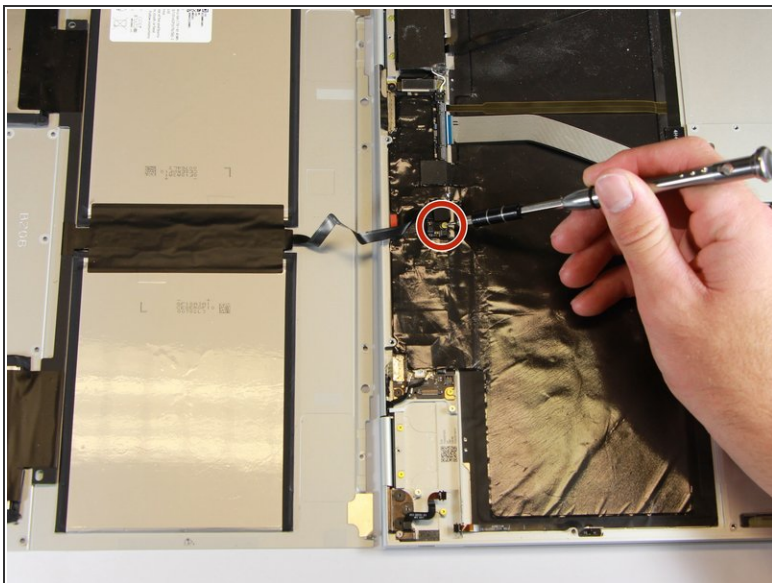
- Remove the seventeen 3.0mm T5 Torx screws from the bottom panel.

## Step 4



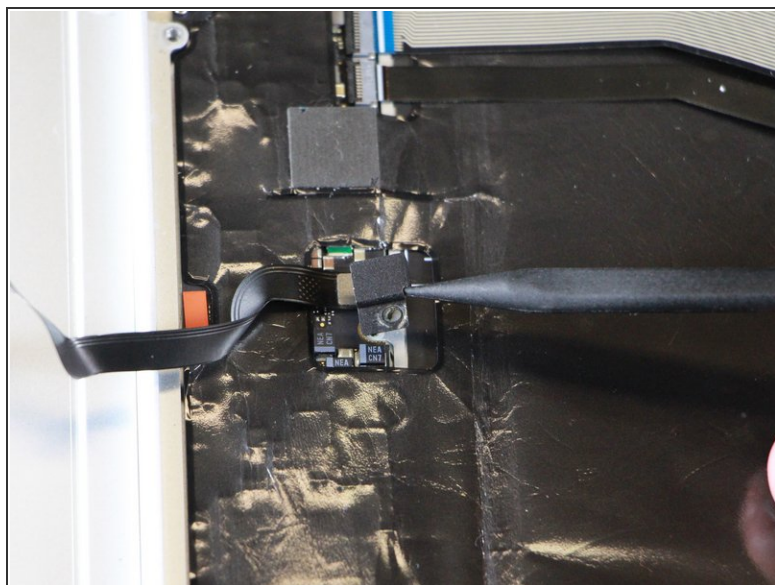
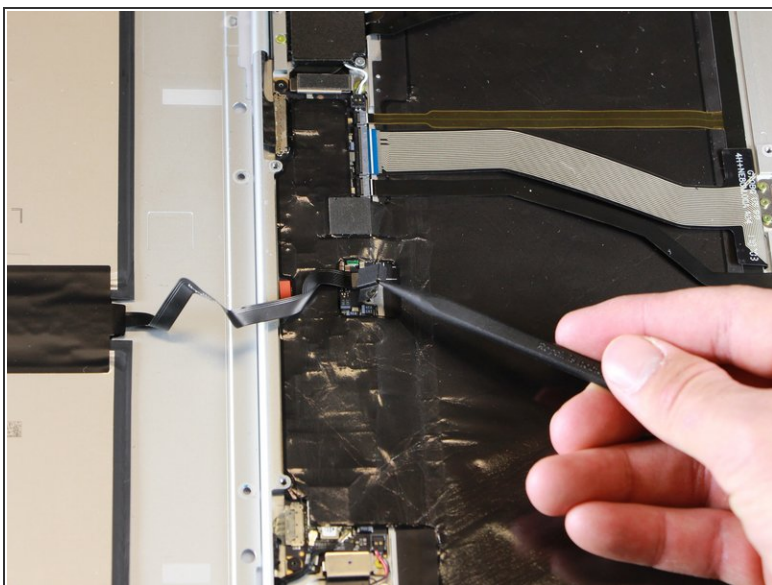
- Use the nylon spudger to pry the edge of the Pixelbook up until you can grab the edge with your fingers.
- Open the back panel completely and lay it flat so you see the whole inside of the computer.

## Step 5



- Remove the yellow 2.0mm screw from the middle of the panel by using the T3 Torx screwdriver to turn the screw counterclockwise.

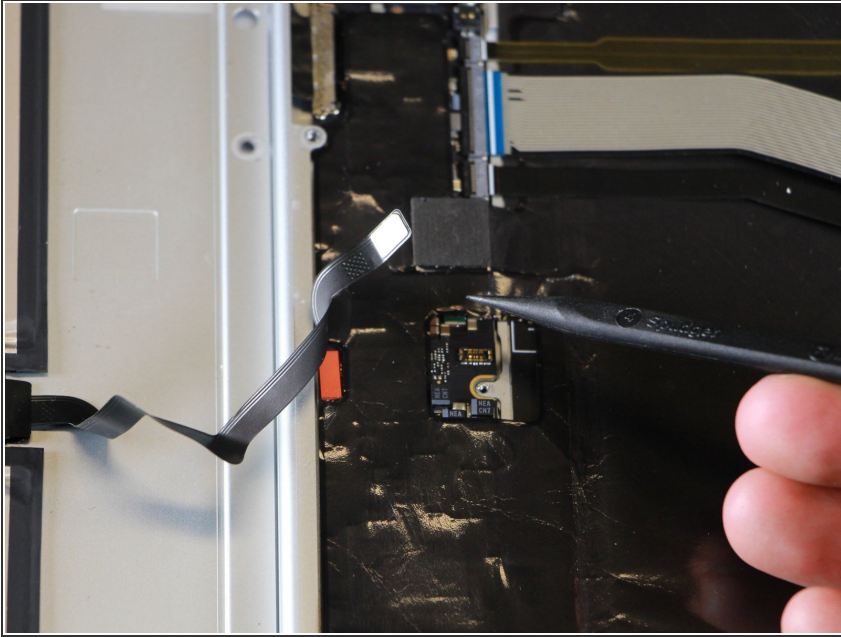
## Step 6



- Remove the small, black casing by using the spudger to lift it up from its place.

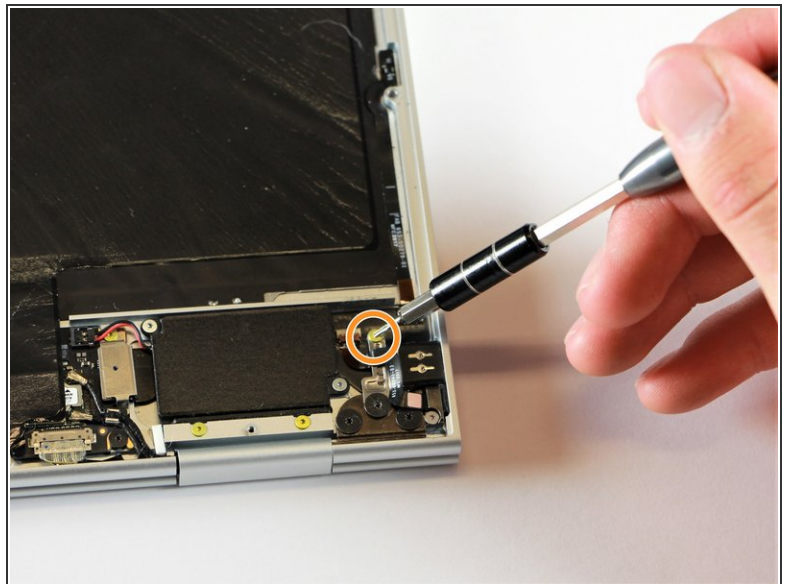
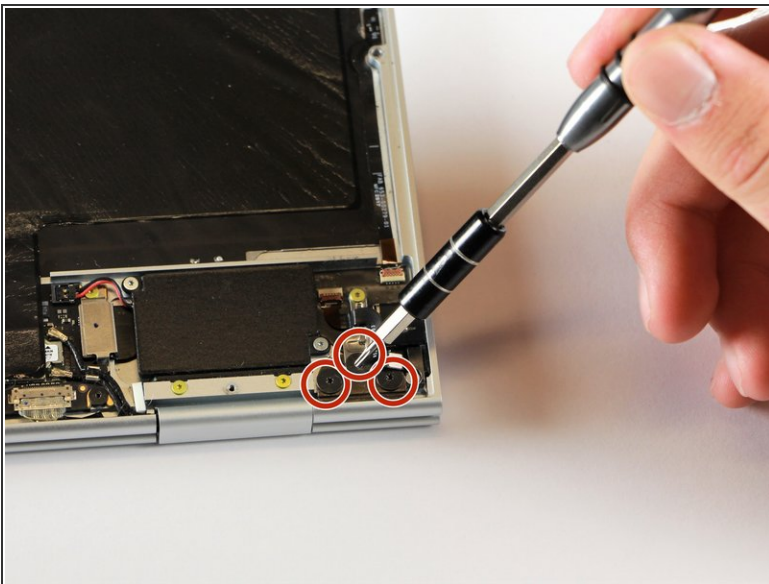


## Step 7



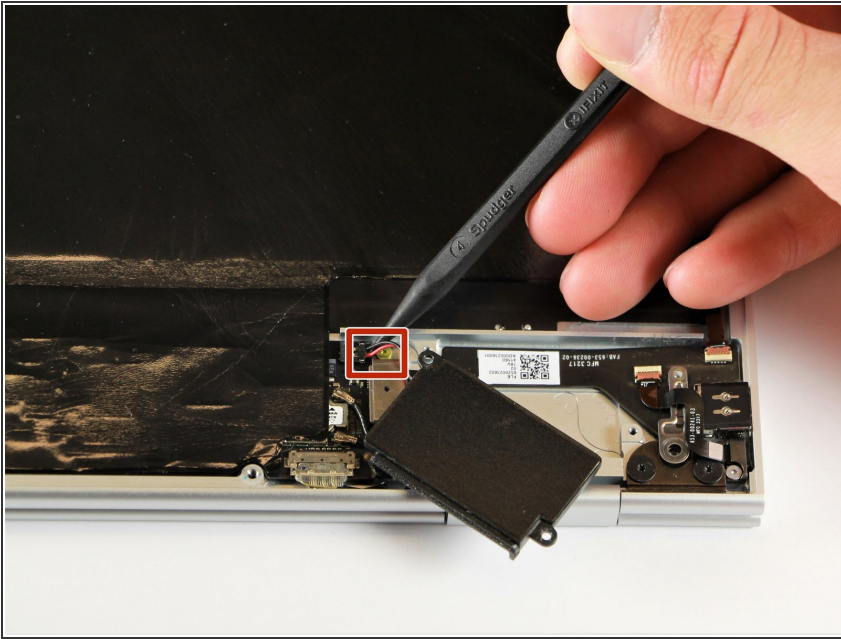
- Disconnect the flat, black cord from the main component by using a spudger to push it out of the slot, or by using your hand to carefully pull it out.
- Your back panel is now free from the main component.

## Step 8 — Right Charging Port



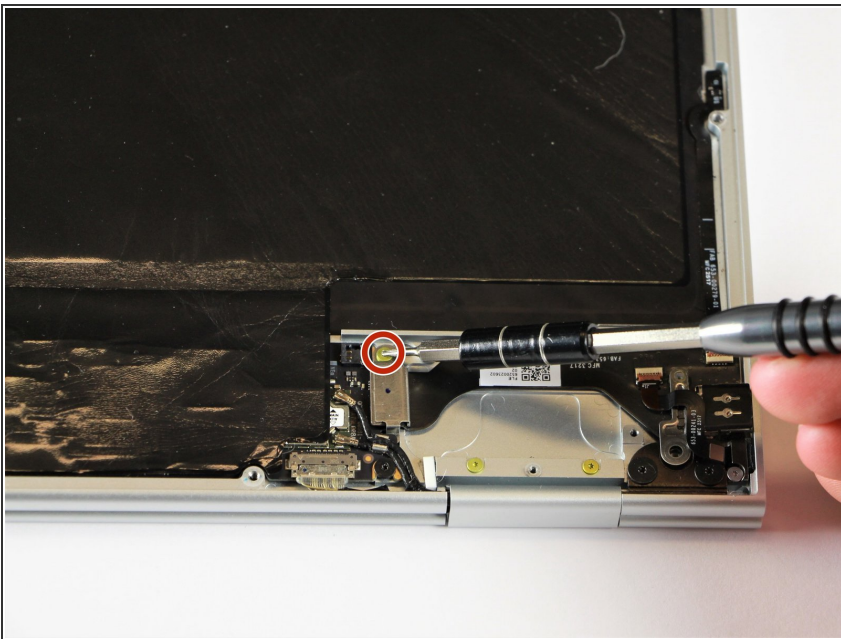
- Remove the three 2.0mm black screws from the sound card by using a T5 Torx screwdriver to turn them counterclockwise.
- Remove the gold 3.0mm screw by using a T3 Torx screwdriver to turn it counterclockwise.

## Step 9



- Disconnect the thin, black and red cord from the motherboard by using the spudger to snap the connector up and out of place.

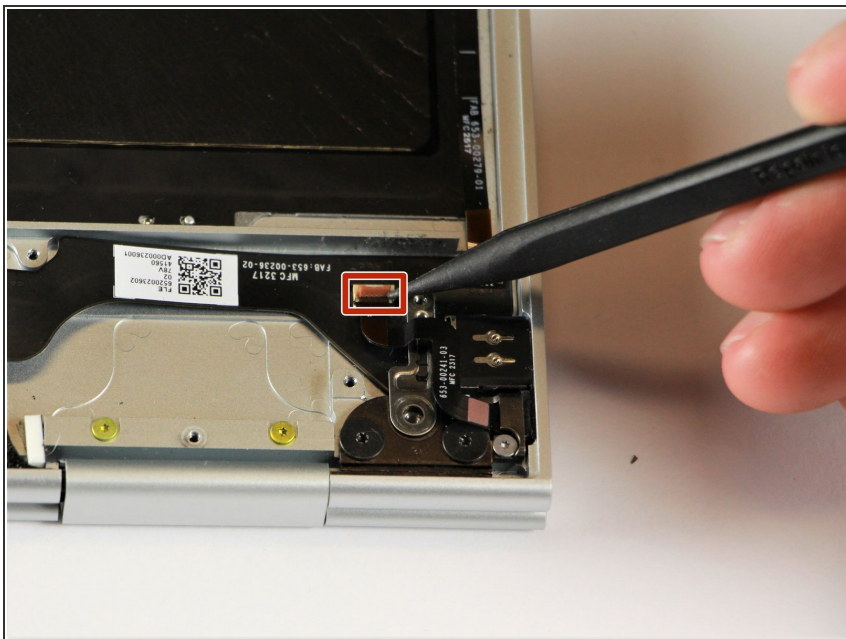
## Step 10



- Remove the yellow 2.0mm screw by using the T3 Torx screwdriver to turn the screw counterclockwise.

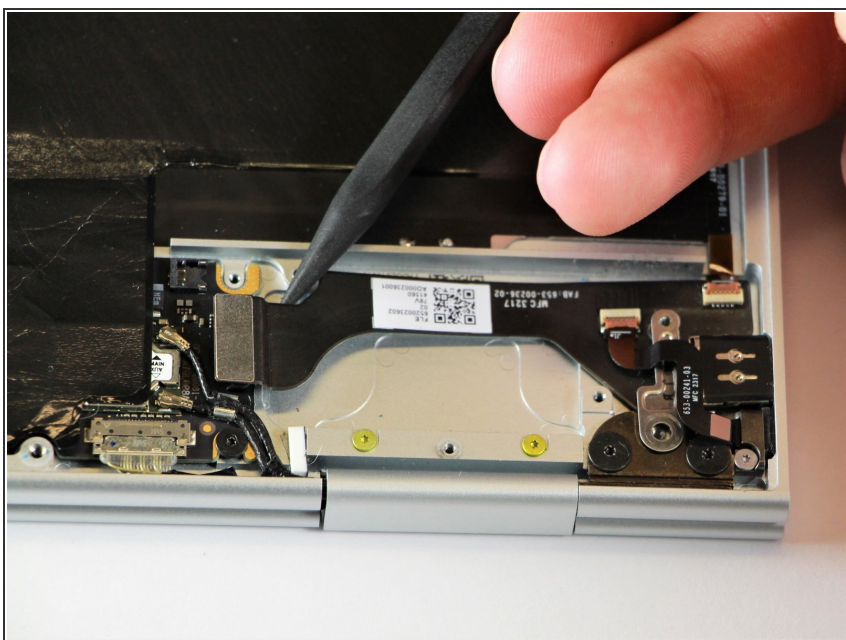


## Step 11



- Remove the small, red component by lifting it up with the spudger.

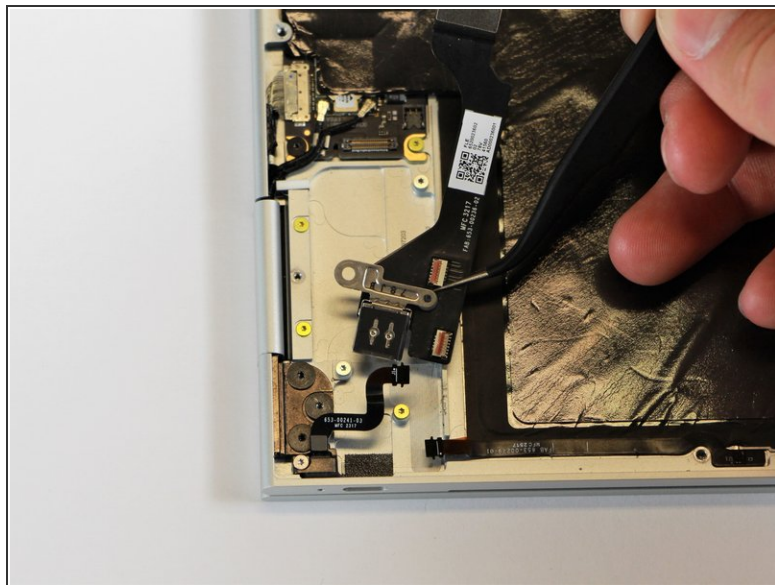
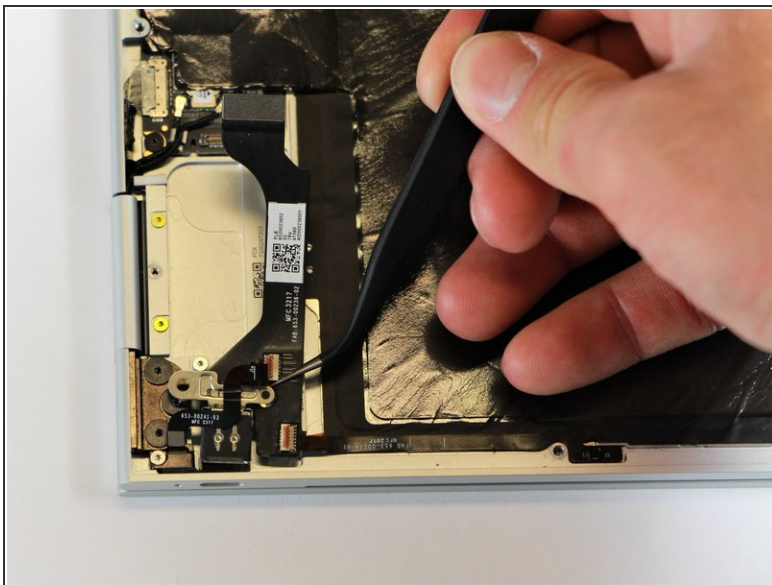
## Step 12



- Disconnect the metal component of the thin, black component by lifting it up with the spudger.

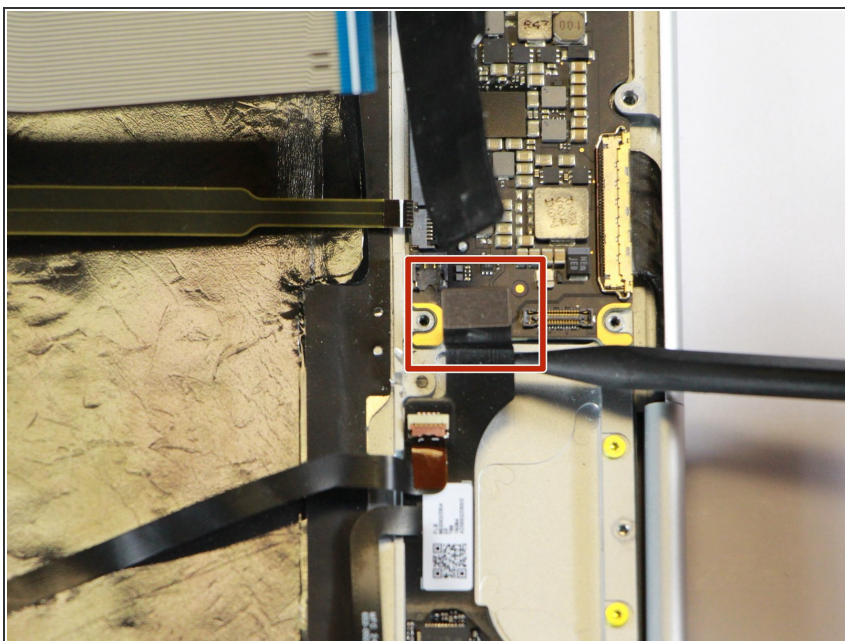


## Step 13



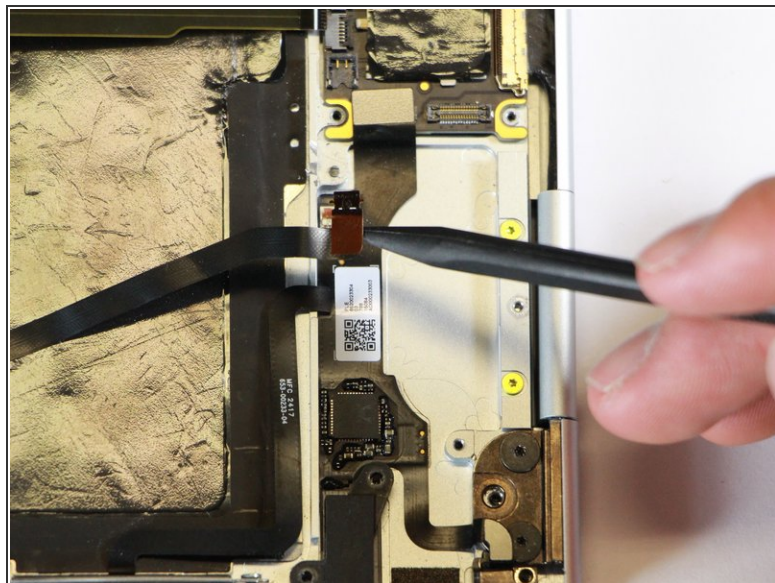
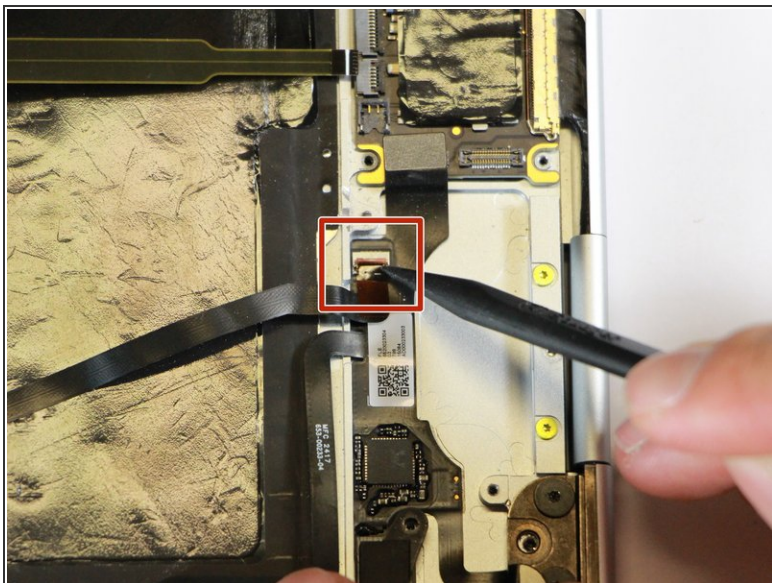
- Remove the right charging port by picking it up with the tweezers and lifting it from the computer.

## Step 14 — Sound Card



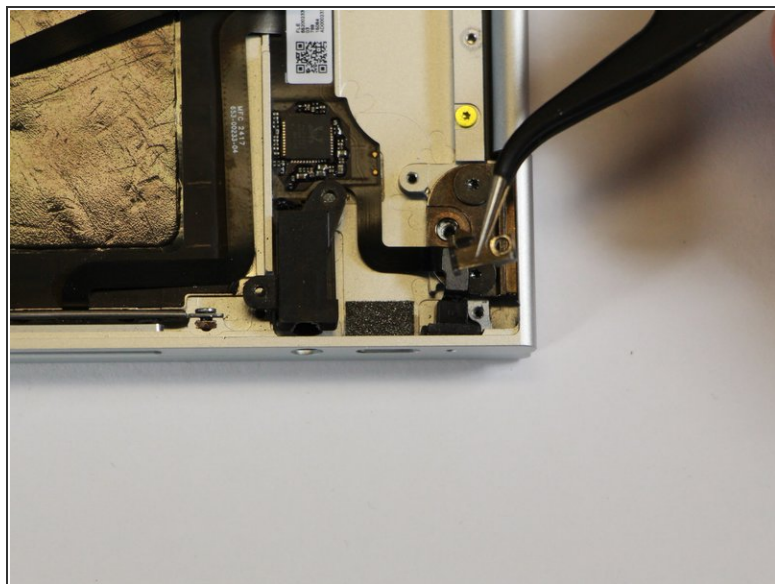
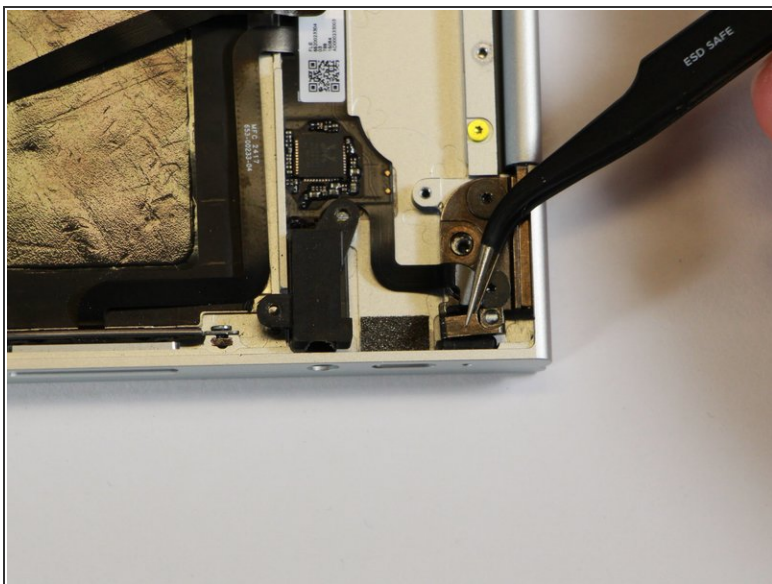
- Use the spudger to disconnect the sound card from the motherboard by pulling the connector up and away from the motherboard.

## Step 15



- Flip open the connection point on the sound card by using the spudger to pop the latch upward.
- Disconnect the black ribbon cable from the sound card by using the spudger or your fingers to pull the cable out and away from the connecting port.

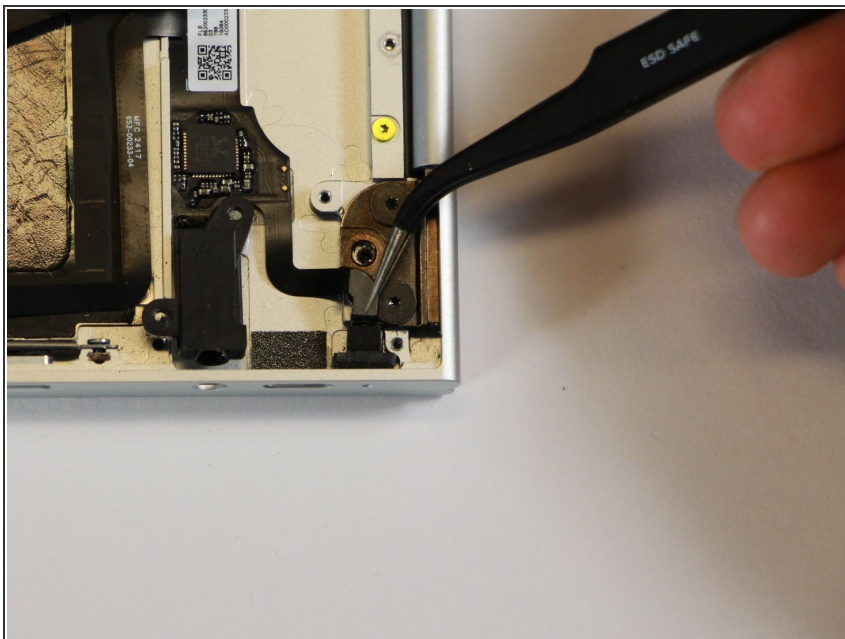
## Step 16



- Use the needle-nose tweezers to remove the silver casing by lifting it up and out of the laptop.



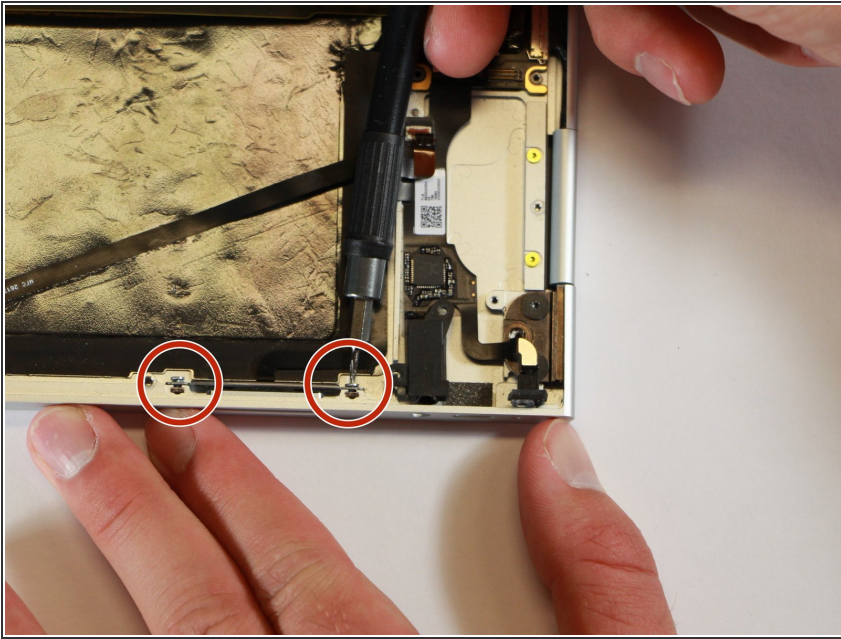
## Step 17



- Disconnect the speaker from the laptop frame by pulling the black ribbon cable out and away from the port.
- ⓘ The speaker may be tough to pull out of the frame if it has not been disconnected previously.

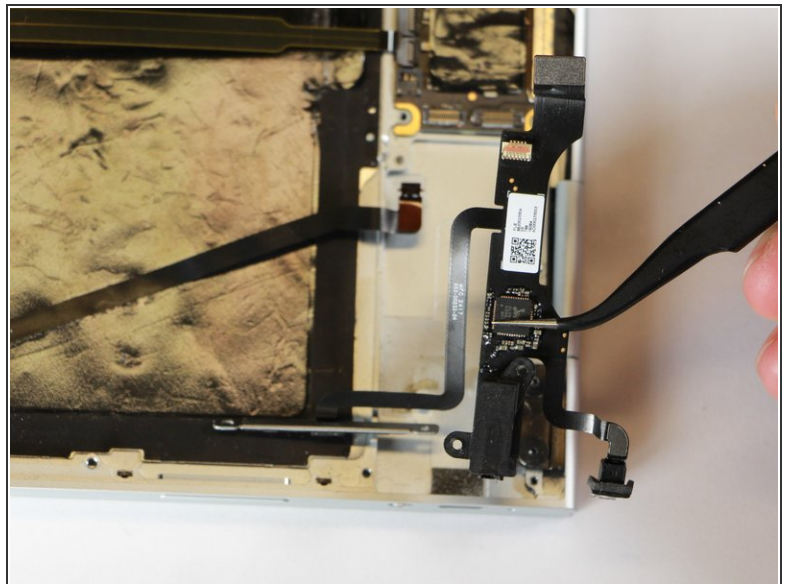
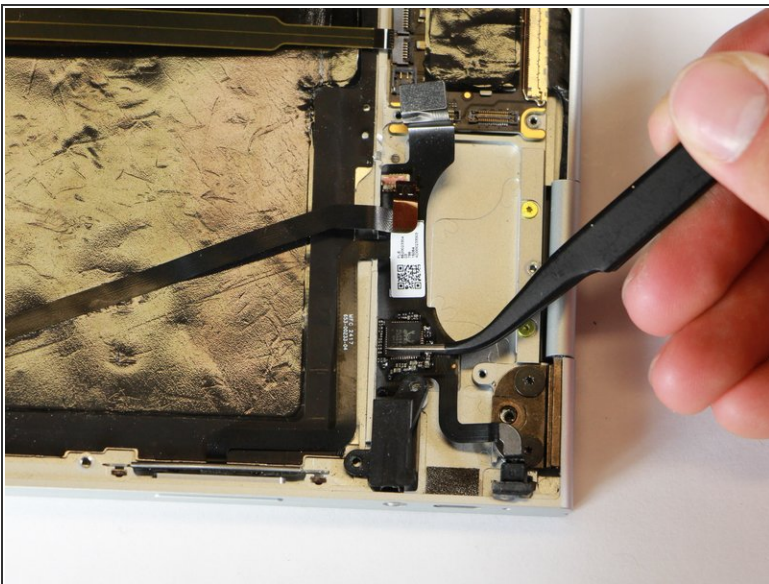


## Step 18



- Use a T3 Torx screwdriver to remove the two silver 3.0mm screws located on the vertical edge of the casing by turning the screws counterclockwise.

## Step 19



- Use the needle-nose tweezers to remove the sound card by lifting it up and out of the laptop.

To reassemble your device, follow these instructions in reverse order.