



Gotrax GXL Scooter Battery Pack Replacement

How to replace battery pack inside a Gotrax GXL E-Scooter

Written By: Eric Summersett



INTRODUCTION

This is the simplest and easiest way to remove and install a new battery in your Gotrax GXL Scooter. Only tools required are the 4mm Allen wrench and a set of pliers.



TOOLS:

- [4mm Allen Wrench](#) (1)

Metric

This tool is provided when purchased new.

- [Slip Joint Pliers](#) (1)



PARTS:

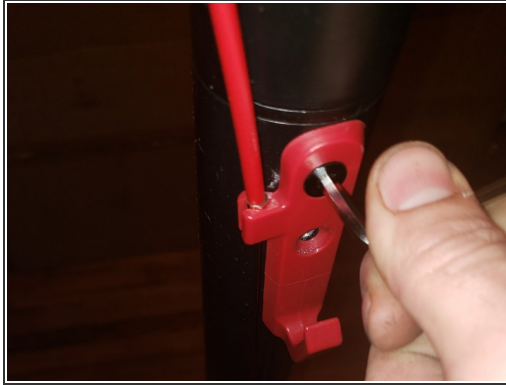
- [Li-ion battery pack](#) (1)

Gotrax Li-ion battery packs

Verify voltage of unit before ordering this part.

Use only battery packs from Gotrax or a trusted supplier.

Step 1 — Remove console screws and locking hook



- Using the 4mm Allen wrench, remove the two screws and locking hook that are used to secure console to the tiller. Store the screws and hook in a safe location for later use.

Step 2 — Disconnect brake cable (Handbrake Edition Only)



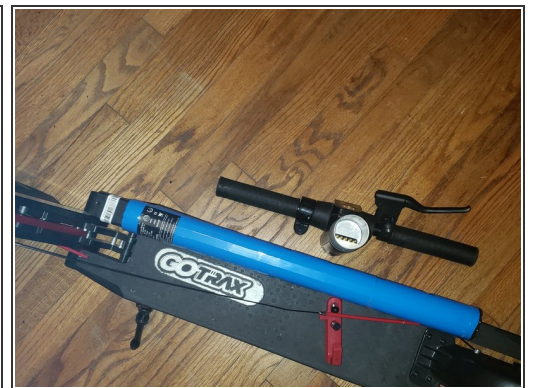
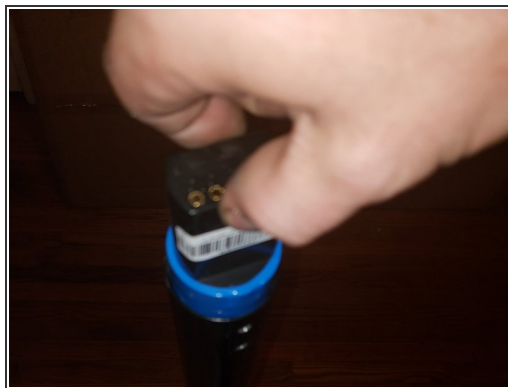
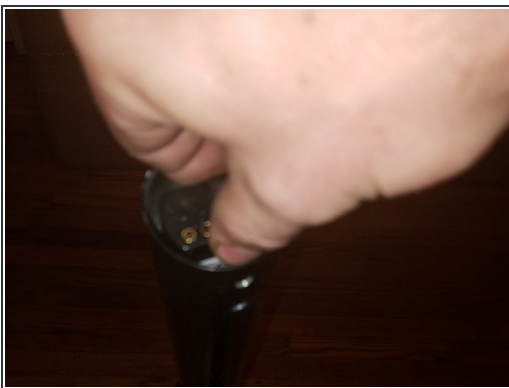
- If the unit has a brake cable running to the hand brake, you will need to disconnect the line before proceeding. Set the line out of the way once disconnected.

Step 3 — Removing the console/head unit



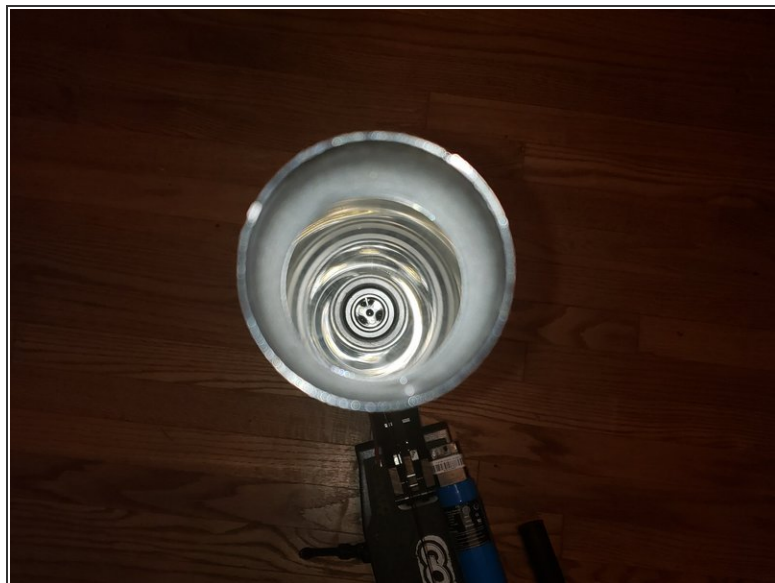
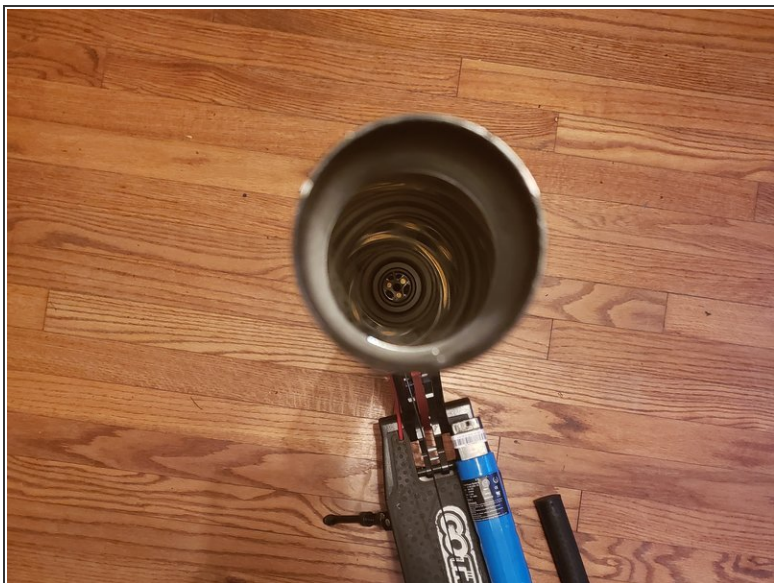
- Remove the console/head unit from the scooter by putting one foot on the scooter's base and lifting up on the handlebars.
- ⓘ Tip: Try to lift as straight as possible out of the tiller. Use caution as extreme force may damage your scooter console or battery connections.

Step 4 — Remove the old battery



- Using caution, grab the top of the battery and begin to lift it out of the tiller. As you can see here I was able to do it with my fingers. If you can not grip the top with your fingers use a pair of pliers to assist you. Set the battery to the side for disposal. (Be sure to follow local laws and regulations when disposing lithium ion batteries)

Step 5 — Check the connections



- While the battery is out, it is a great time to check the connections at the bottom of the tiller. Look down the tiller and ensure the pins are grouped together tightly and free of arching or debris. (If you see an issue, please stop and consult a technician before proceeding.)

Step 6 — Install the battery pack



- Grab the new battery pack and ensure that you are installing the battery pack correctly. There is a groove at the bottom of the battery that must align with the motor adapter in order to supply power to the motor. Once you ensure the position is correct, gently slide the pack into the tiller.

Step 7 — Reinstall the Console/Head unit



- Reattach the console/head unit by sliding it back into place. Make sure the thread part of the console aligns with the drilled holes for the locking hook and gently press down to ensure the console is secure on the battery.

⚠ If it is hard to install, stop and inspect the consoles pins under the head unit. If damaged do not proceed.

Step 8 — Reconnect the brake line (Handbrake Edition)



- If the unit has the handbrake, now is the time to reinstall the brake line to the hand brake.

Step 9 — Reinstall the locking hook



- Install the locking hook and the two screws into the head unit. Tighten the screws firmly. Now you are finished and ready to test your work. Power on your scooter and take it for a test drive.

If you run into any issues I recommend reaching out the customer service/ technical support for further assistance.