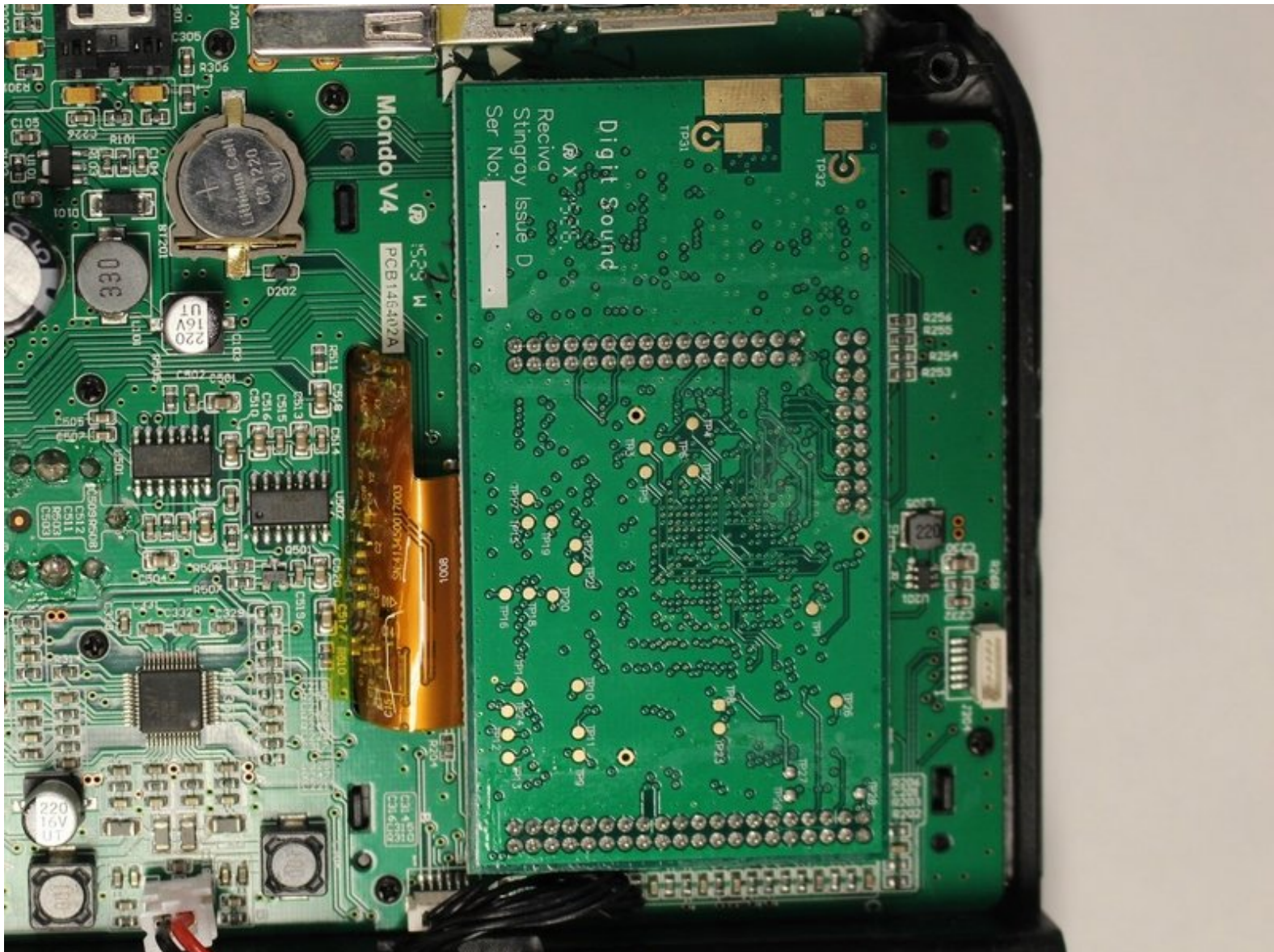




Grace Digital Mondo Motherboard Replacement

Remove and replace the motherboard of your Grace Digital Mondo.

Written By: Nathaniel Brabham



INTRODUCTION

The replacement for your device's motherboard requires a little extra effort than the other components in the device, but is still easily manageable with a soldering kit. With the little amount of desoldering required for this project, a YouTube video undergoing basic safety precautions and soldering kit use is recommended.

TOOLS:

- [Phillips #1 Screwdriver](#) (1)
 - [Metal Spudger](#) (1)
 - [Soldering Iron](#) (1)
 - [Spudger](#) (1)
-

Step 1 — Front Panel



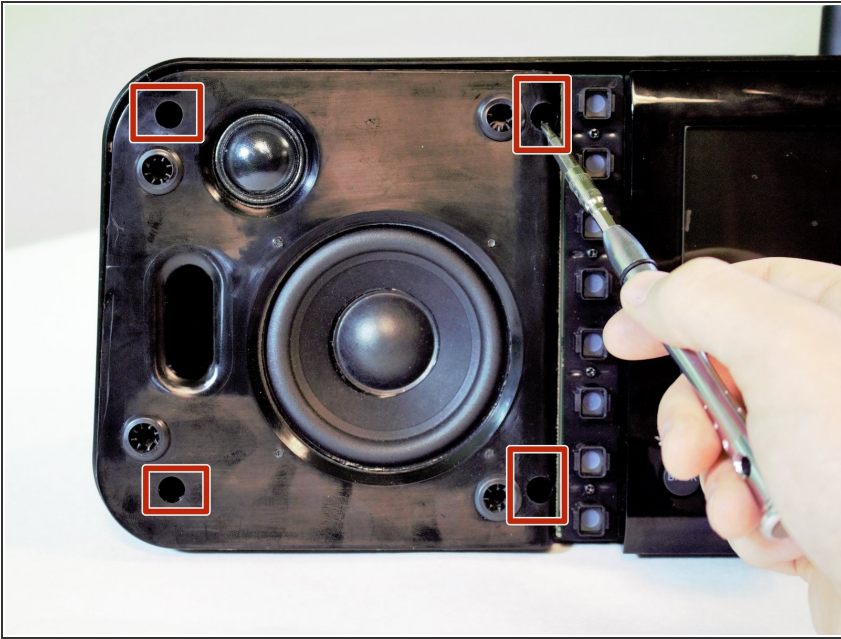
- Remove (2) screws (14 mm) with a PH1 screwdriver on the device.
- There is one screw on the back left, and another just below it on the bottom of the device.

Step 2



- Use a plastic spudger to remove the front preset selection buttons.
 - ❗ We recommend you remove all of them for easier access.
- Gently reach underneath and pull off the mesh speaker cover. It only clips in so don't worry about breaking anything.

Step 3



- Remove (4) screws (14 mm) with a PH1 screwdriver on the front panel by the speaker.

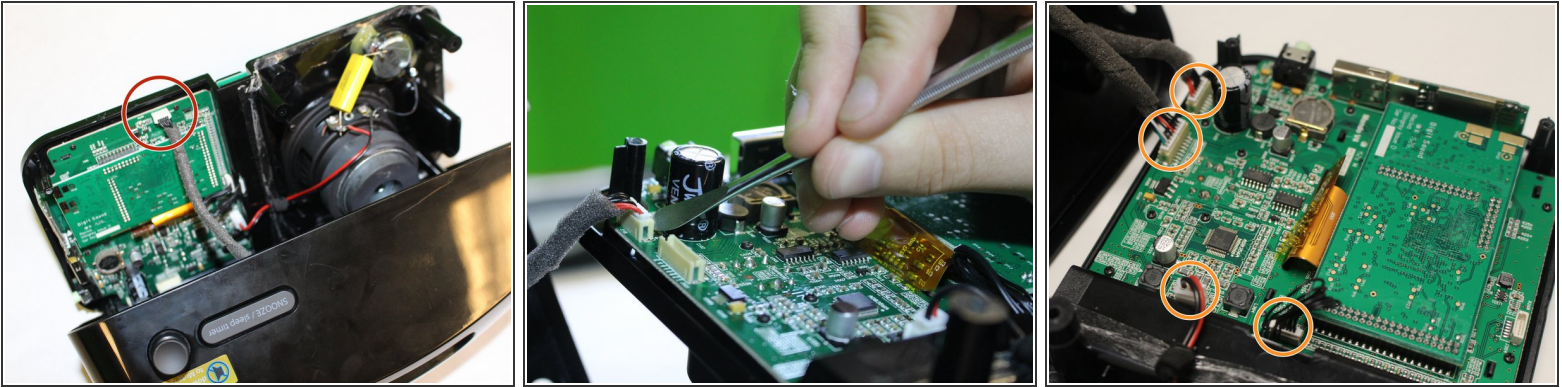
⚠ Be careful with these screws, as they can be stripped easily.

Step 4



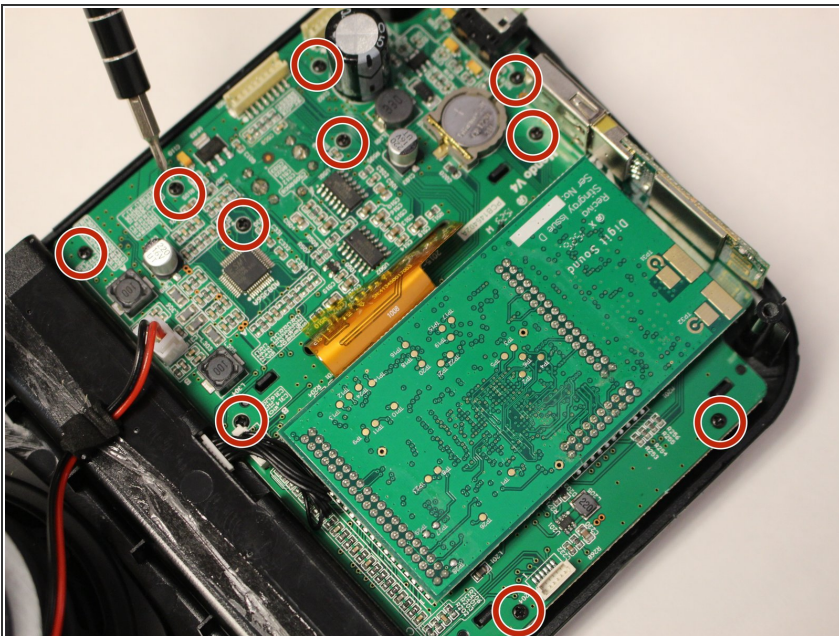
- Move the metal spudger around the front panel to remove any adhesive attaching the front panel to the device.
- Pull apart the front panel from the device with help from the metal spudger.

Step 5



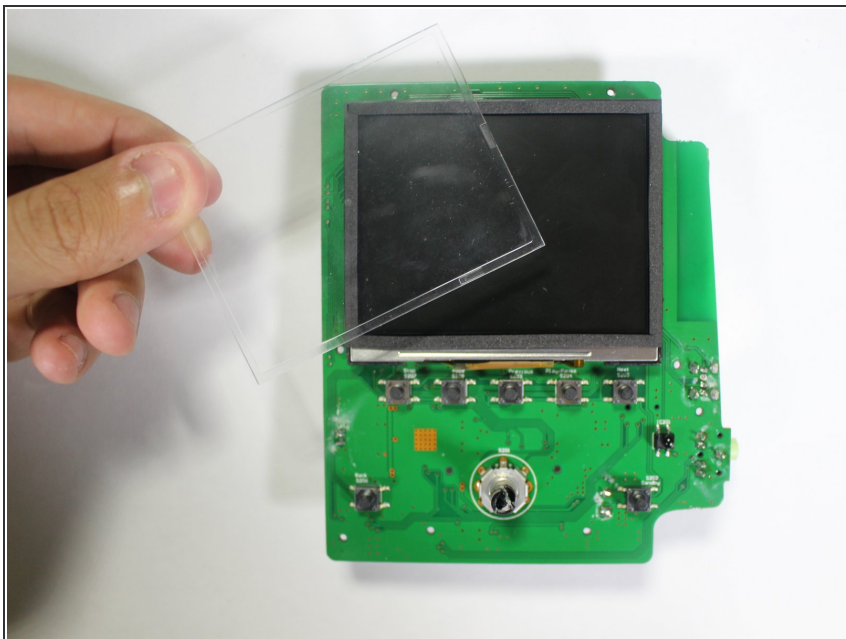
- Detach a pin connector at the top of the device using a metal spudger to open up the inner components.
- Detach (4) pin connectors inside using a metal spudger to separate the front panel from the rest of the device.

Step 6 — Motherboard



- Remove (10) screws (10 mm) with a PH1 screwdriver on the display board.

Step 7



- Remove the motherboard from the front panel.
- ⚠ If motherboard is difficult to separate, DO NOT force it. Check to see if all the screws were removed and proceed to remove the motherboard gently.

To reassemble your device, follow these instructions in reverse order.