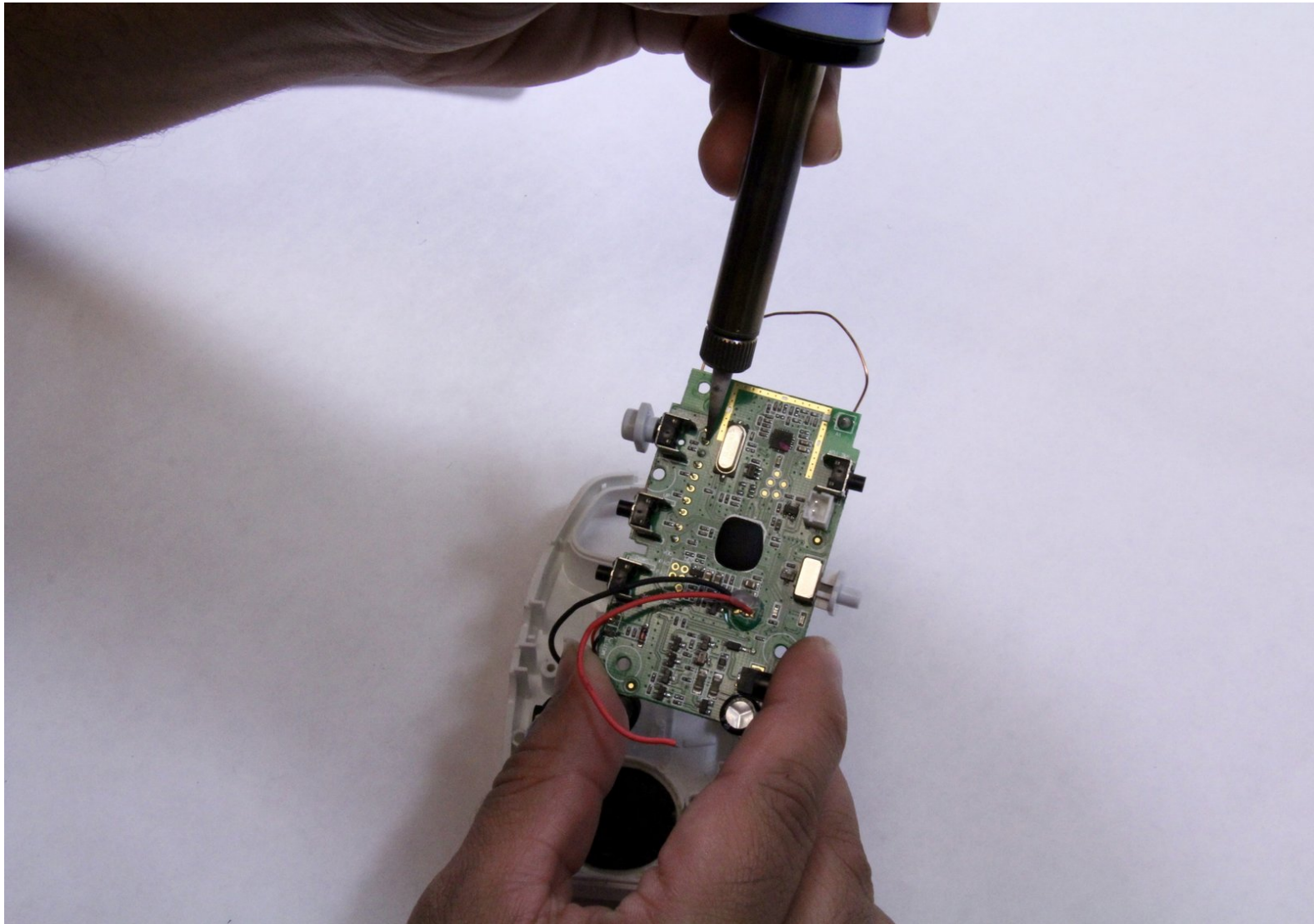




Graco Secure Coverage LED Parent Unit Replacement

Replace the LED on your Graco Secure Coverage Digital Baby Monitor for parent unit.

Written By: Bryson Wolff



INTRODUCTION

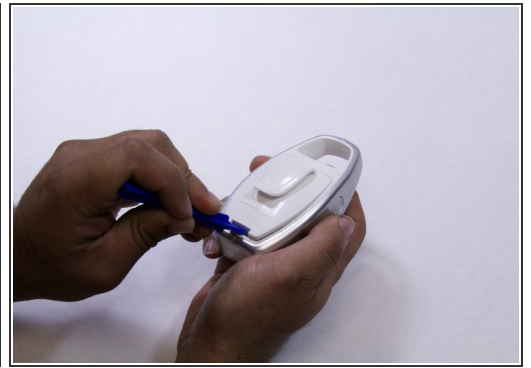
Use this guide to replace the LED on your Graco Secure Coverage Digital Baby Monitor for parent unit.

The LED replacement includes the LED and battery replacement.

TOOLS:

- [iFixit Opening Tools](#) (1)
 - [Soldering Iron](#) (1)
 - [Phillips #1 Screwdriver](#) (1)
-

Step 1 — Parent Unit Battery



- Using plastic opening tool, pry and remove the battery lid.

Step 2



- Remove the battery by holding the device with one hand and pulling the battery out with other hand carefully.
- ⓘ Make sure that you disconnect the battery's wire before you remove the battery.

Step 3 — LED Parent Unit



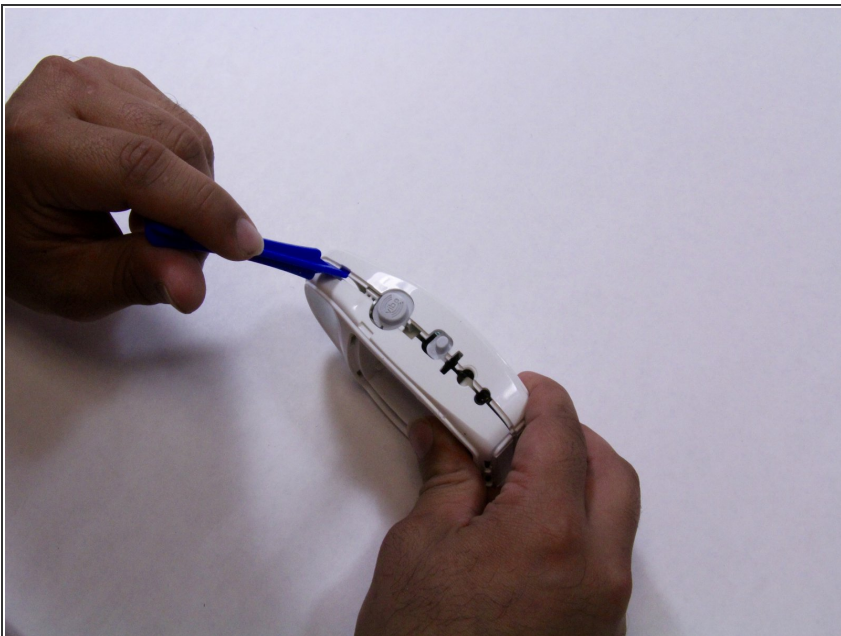
- ⓘ There are two screws on the rear case of the device. For the one shown in blue marker requires either an extended screwdriver or putting on a little pressure on a regular screwdriver.
- Remove the two 9mm Phillips #1 screws from the rear case of the device.
- ⚠ If you cannot remove the screw with low pressure, do not use high pressure to remove it. It may cause a damage on the device case. Use an extended screwdriver instead.

Step 4



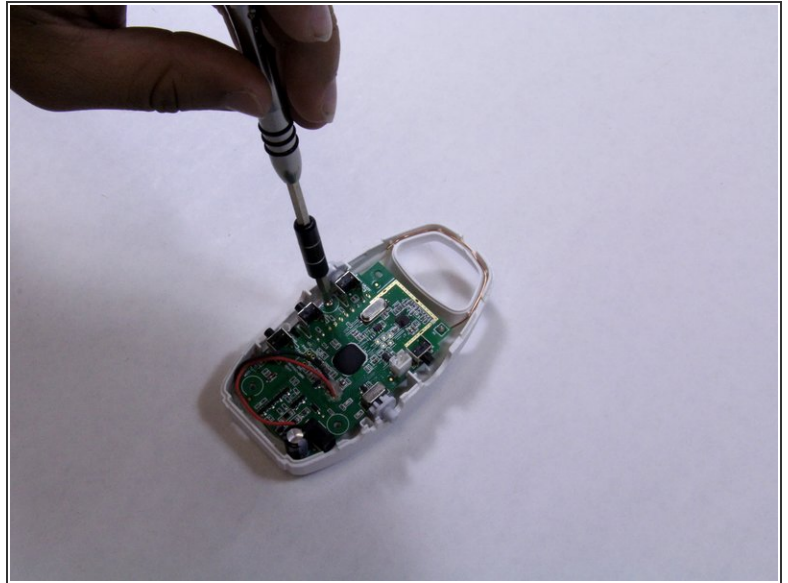
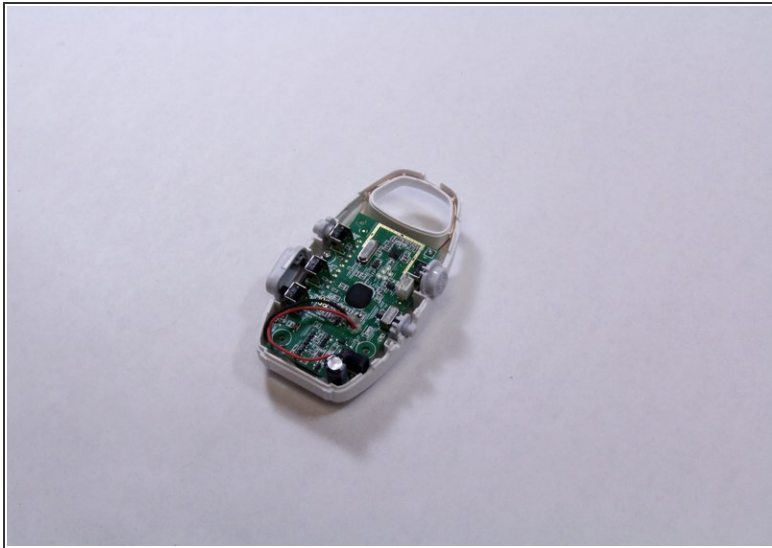
- Using opening plastic tool, pry the two grey cases from both sides of the device.
- ⚠ Take your time and apply constant force to avoid breaking or damaging any other plastic parts.
- While pry off the grey cases, hold the device with your other hand to remove the cases

Step 5



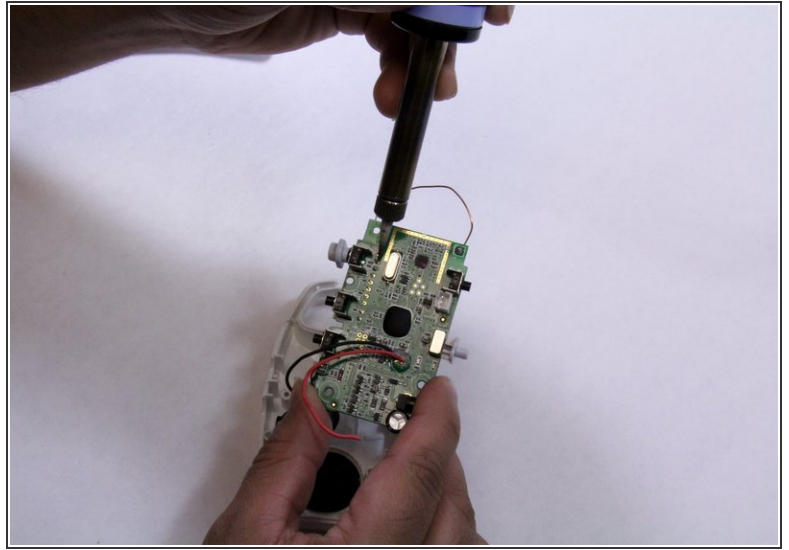
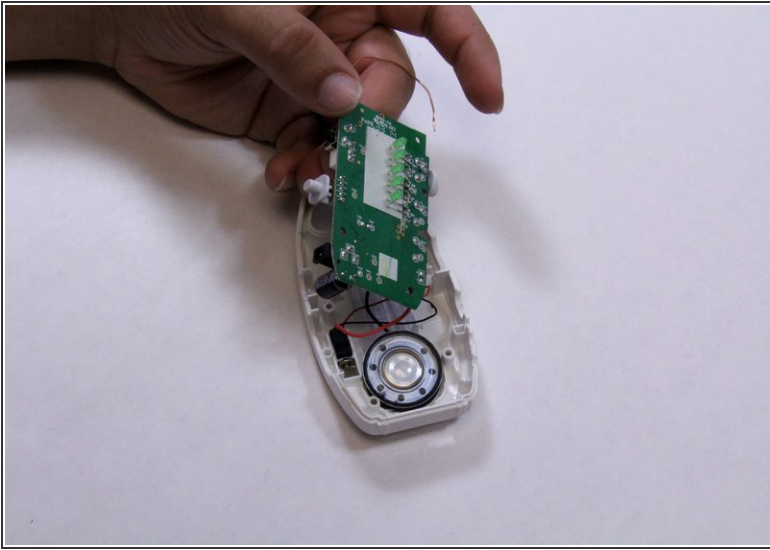
- Pry the edges of the device to separate the front and rear cases.
 - While prying the edges, hold the device with one hand to pull out each case a part.
- ⚠ Make sure you use a constant force, and the pushbuttons are pried off completely.

Step 6




- Remove the 7mm Phillips #1 screw from the mother board.
- Place the screw in a secure place.

Step 7



- Flip over the motherboard.
- Solder off LED from motherboard.

 There are many pins attached to the motherboard, make sure you solder off the proper pins that attached to the LED's.

- Replace the LED's

To reassemble your device, follow these instructions in reverse order.