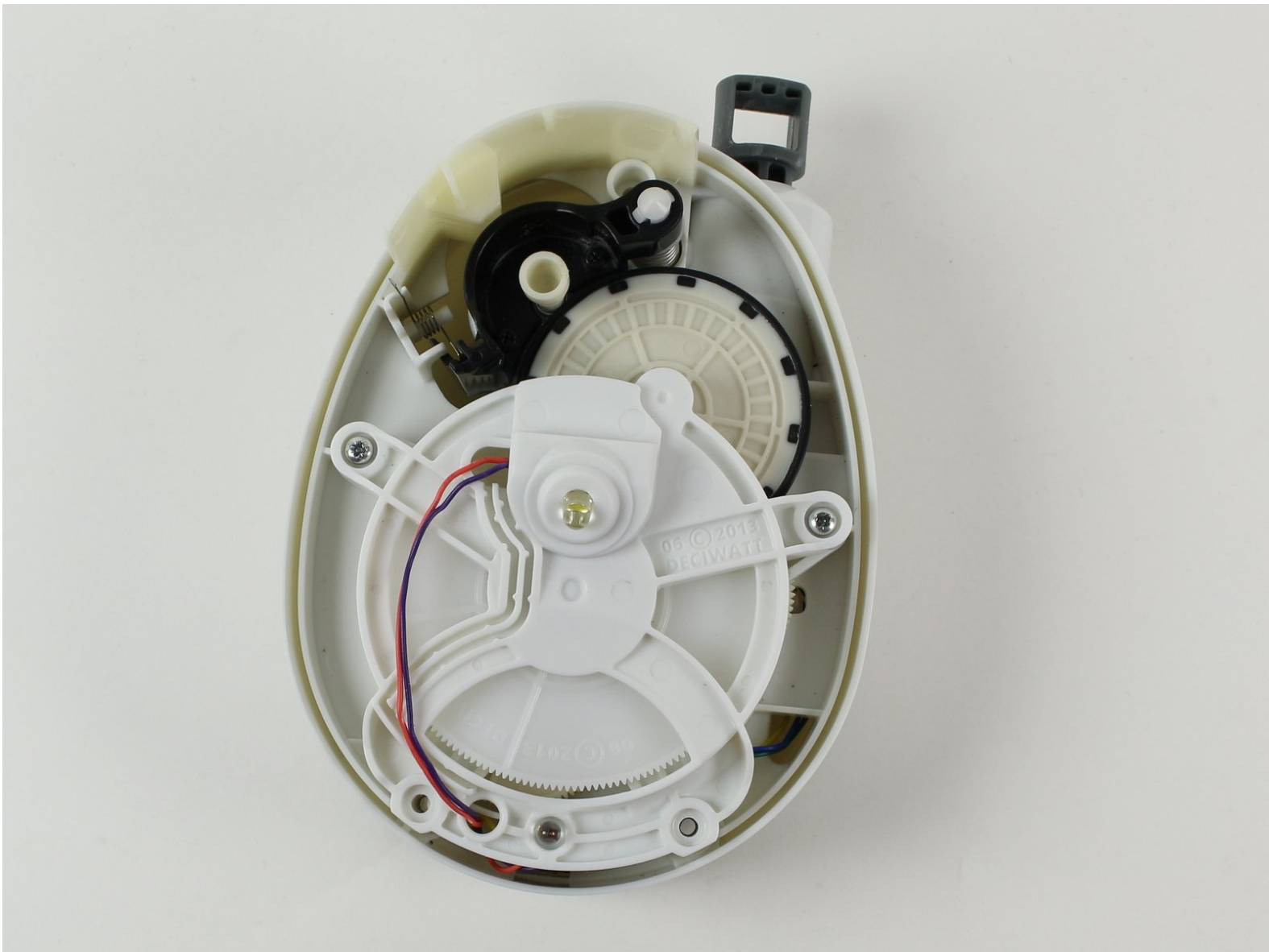




GravityLight Internal Gears Replacement

This replacement guide shows how to unscrew the front of the GravityLight and separate the front panel from the back. Then, how to remove and replace the internal gears.

Written By: Michallynn Hoffman



INTRODUCTION

If the bag of rocks is not moving due to an internal issue, it might be because the gears are stripped! You will learn how to replace them.



TOOLS:

- [Phillips #00 Screwdriver](#) (1)
-

Step 1 — Removing the Front Panel



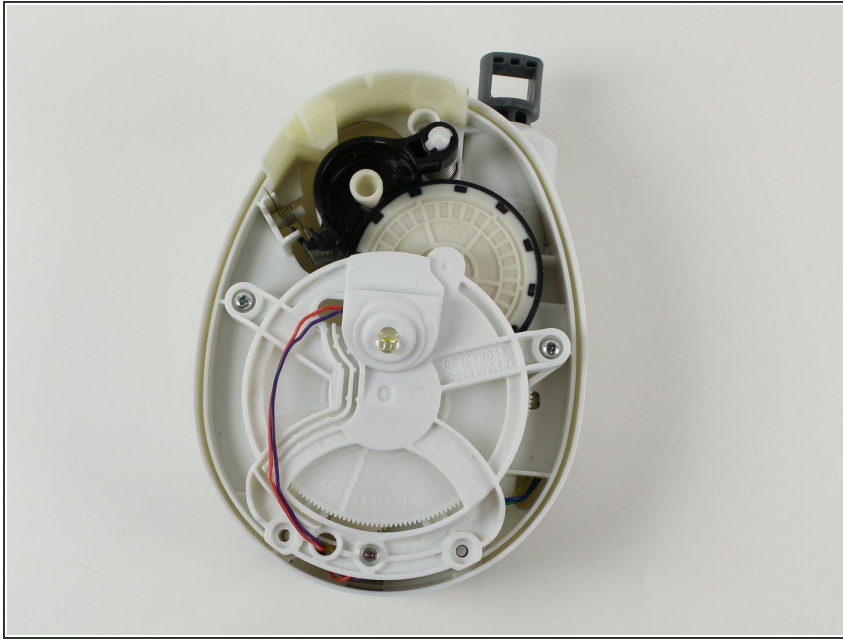
- Flip the GravityLight on its back and place it on a sturdy surface.
- Unscrew the three 2cm Phillips #00 screws on the back of the GravityLight's body.

Step 2 — Opening the Device Housing



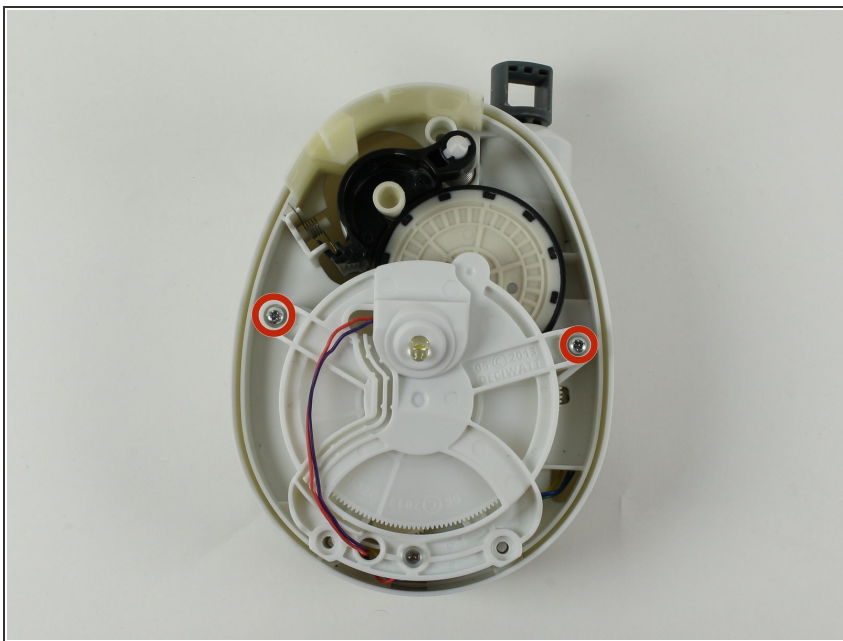
- ⚠ Some of the internal pieces may loosen or fall out during disassembly.
- Firmly grasp both parts of the GravityLight body and pull them apart.

Step 3 — Isolating the Back Panel



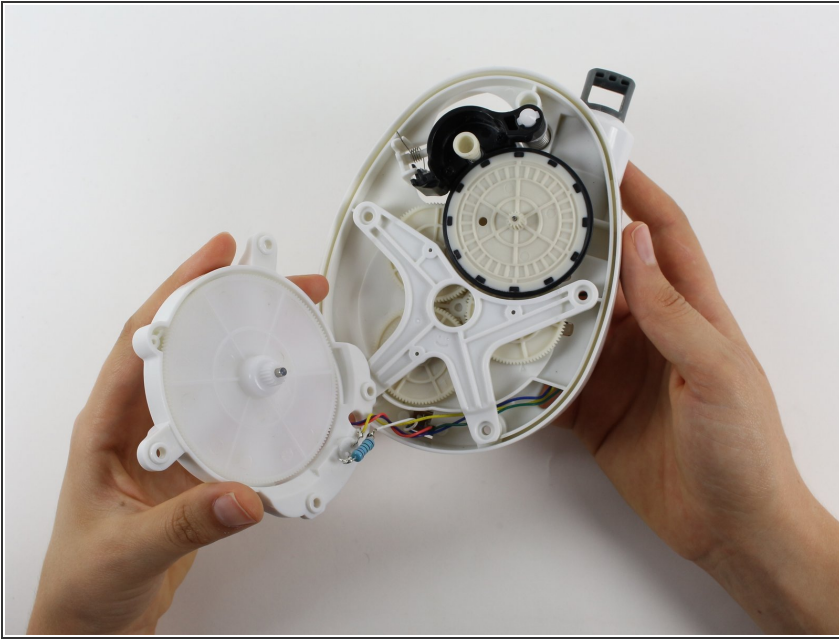
- Take the thicker of the two parts, the back piece, and place it face down on a sturdy surface.

Step 4 — Removing the Back Panel Screws



- Place the back panel, the larger of the two pieces, on a sturdy surface with its back down.
- Unscrew the two 2cm Phillips 00 screws on the inside of the back panel.

Step 5 — Removing the LED Housing



⚠ Watch out for the wires! Keep them attached for this entire guide, or the GravityLight will not work!

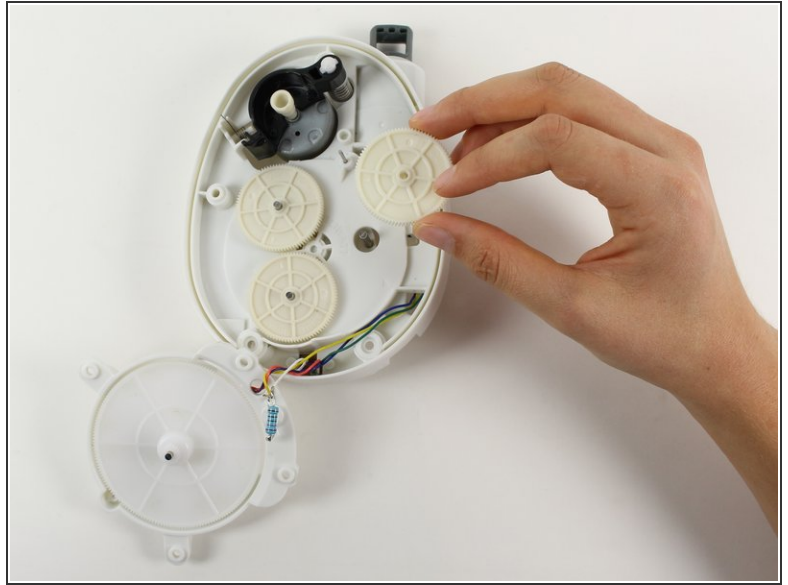
- Gently lift off the LED housing (the white disk).
- Set the LED housing on the table next to the body of the device.

Step 6 — Removing White Frame and Gear



- Lift off the white piece with four arms.
- Lift off the black-rimmed gear.
- Set both pieces aside in a safe place.

Step 7 — Removing Internal Gears



- Lift off the three 3.5cm diameter gears.
- Replace any stripped gears.

To reassemble your device, follow these instructions in reverse order.