



# GravityLight Motor Replacement

This replacement guide shows how to unscrew the front of the GravityLight, separate the front panel from the back, and remove and replace the motor.

Written By: Anthony Jungquist



## INTRODUCTION

If the white LED won't light up it may be an issue with the motor. You will need to take the Gravity Light apart and replace the motor.

---

### TOOLS:

- [Phillips #00 Screwdriver](#) (1)
  - [Solder](#) (1)
  - [Flush Wire Cutter](#) (1)
  - [Soldering Iron](#) (1)
-

## Step 1 — Removing the Front Panel



- Flip the GravityLight on its back and place it on a sturdy surface.
- Unscrew the three 2cm Phillips #00 screws on the back of the GravityLight's body.

## Step 2 — Opening the Device Housing



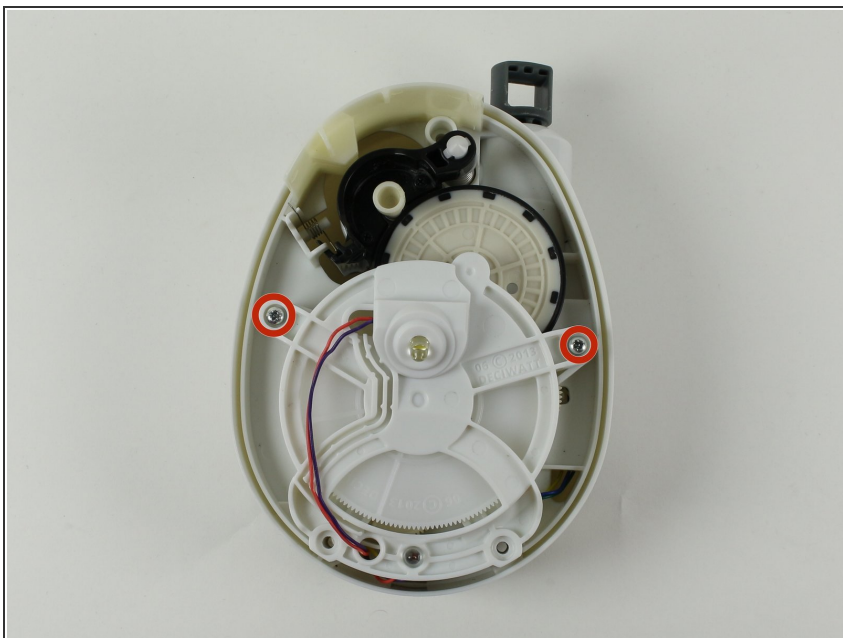
- ⚠ Some of the internal pieces may loosen or fall out during disassembly.
- Firmly grasp both parts of the GravityLight body and pull them apart.

### Step 3 — Isolating the Back Panel



- Take the thicker of the two parts, the back piece, and place it face down on a sturdy surface.

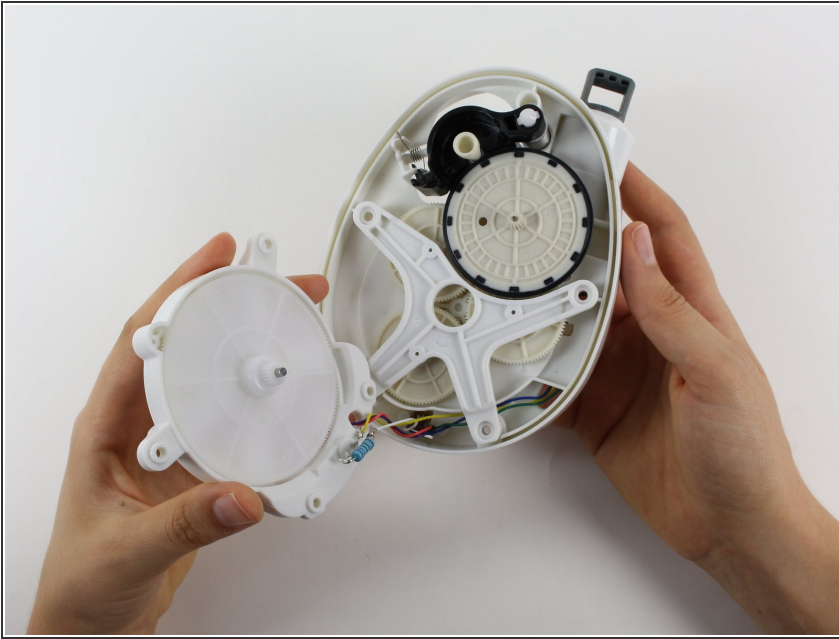
### Step 4 — Removing the Back Panel Screws



- Place the back panel, the larger of the two pieces, on a sturdy surface with its back down.
- Unscrew the two 2cm Phillips 00 screws on the inside of the back panel.



## Step 5 — Removing the LED Housing



**⚠** Watch out for the wires! Keep them attached for this entire guide, or the GravityLight will not work!

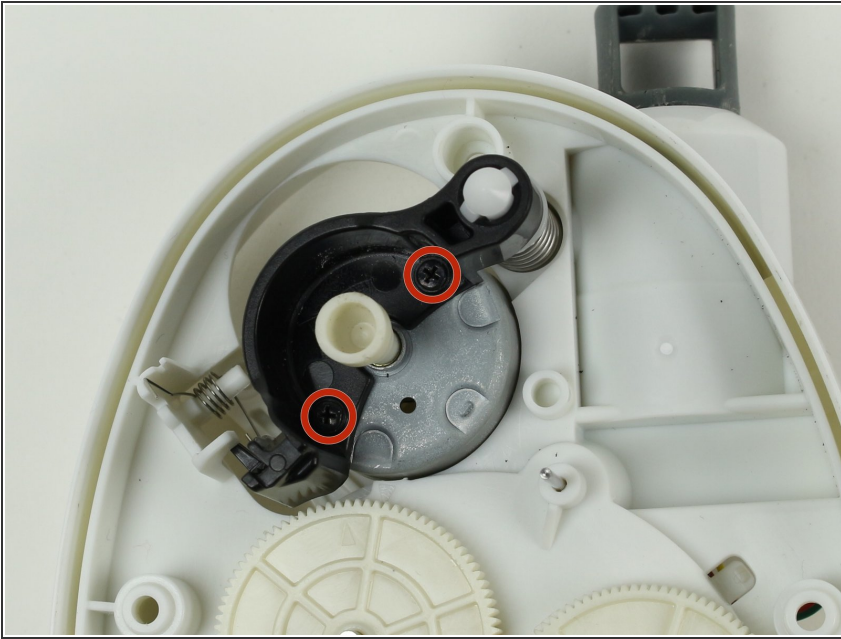
- Gently lift off the LED housing (the white disk).
- Set the LED housing on the table next to the body of the device.

## Step 6 — Removing White Frame and Gear



- Lift off the white piece with four arms.
- Lift off the black-rimmed gear.
- Set both pieces aside in a safe place.

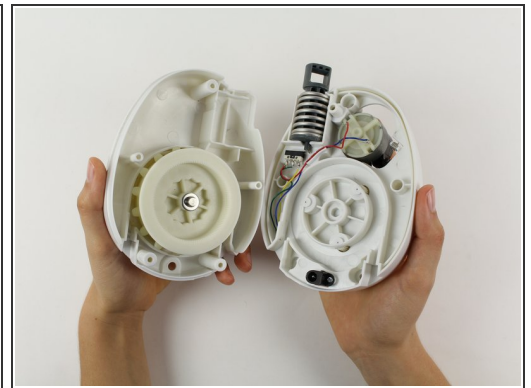
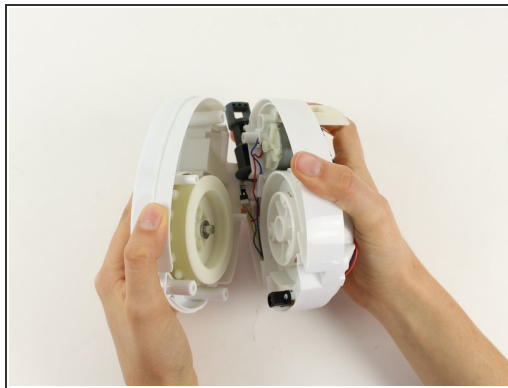
## Step 7 — Removing the Motor Screws



- Remove the two 2cm Phillips 00 screws from the motor housing.

⚠ The spring pushing the motor housing may pop out once the motor has been removed.

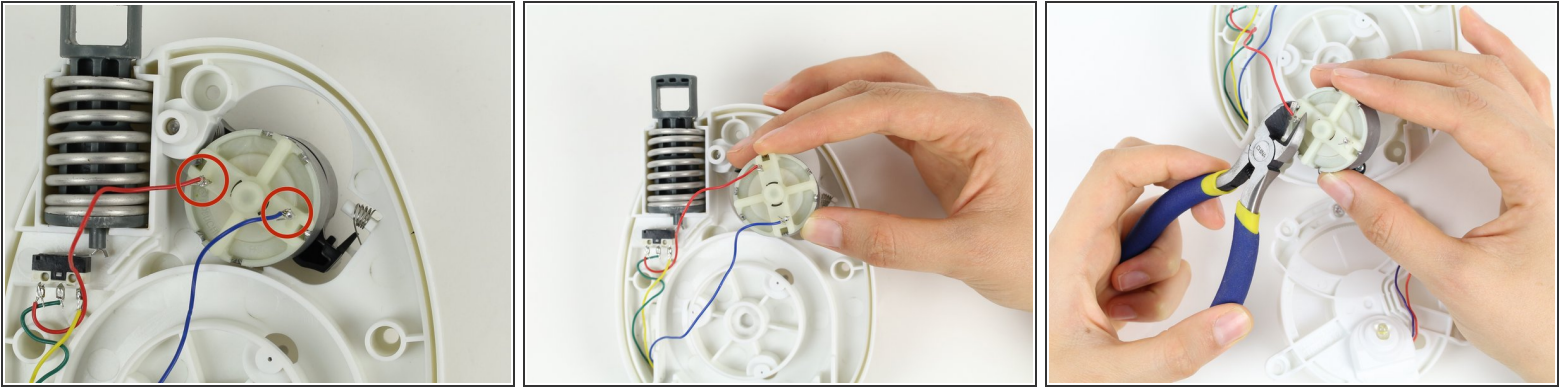
## Step 8 — Separating the Back Panel Housing



⚠ Some of the internal pieces may loosen or fall out during disassembly.

- Firmly grasp both parts of the back panel and pull them apart.

## Step 9 — Removing the Motor

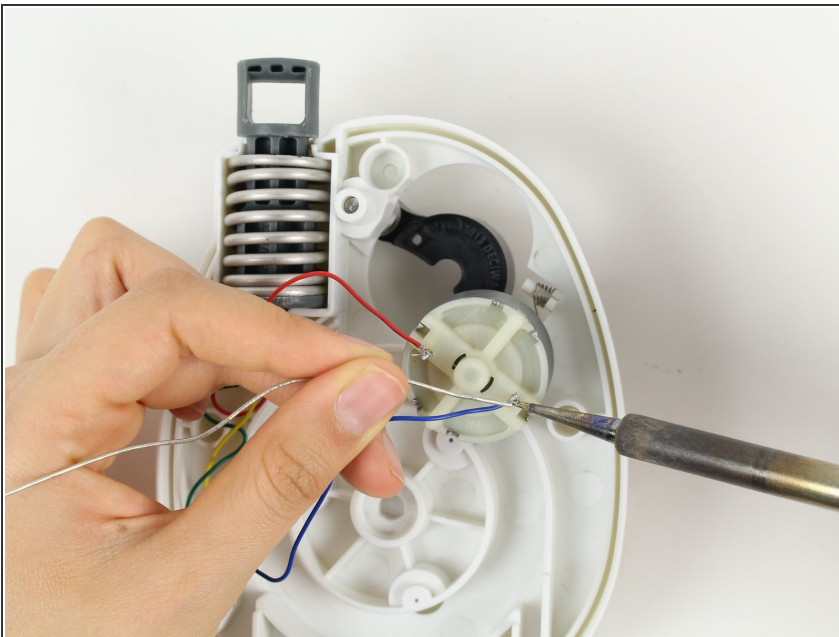


- Place the middle section flat with the side that holds the gear system down and locate the back of the motor.

⚠ Clip the wires close to the soldered joints.

- Lift the motor out of the middle section. Using the flush wire cutters, clip the red and the blue wires located on the motor's back.

## Step 10 — Soldering the New Motor



- ★ Take the new motor and solder the red and blue wires on to it.

i For information on how to solder look here: [How To Solder and Desolder Connections](#)

To reassemble your device, follow these instructions in reverse order.

This document was generated on 2019-09-20 01:35:13 PM (MST).

