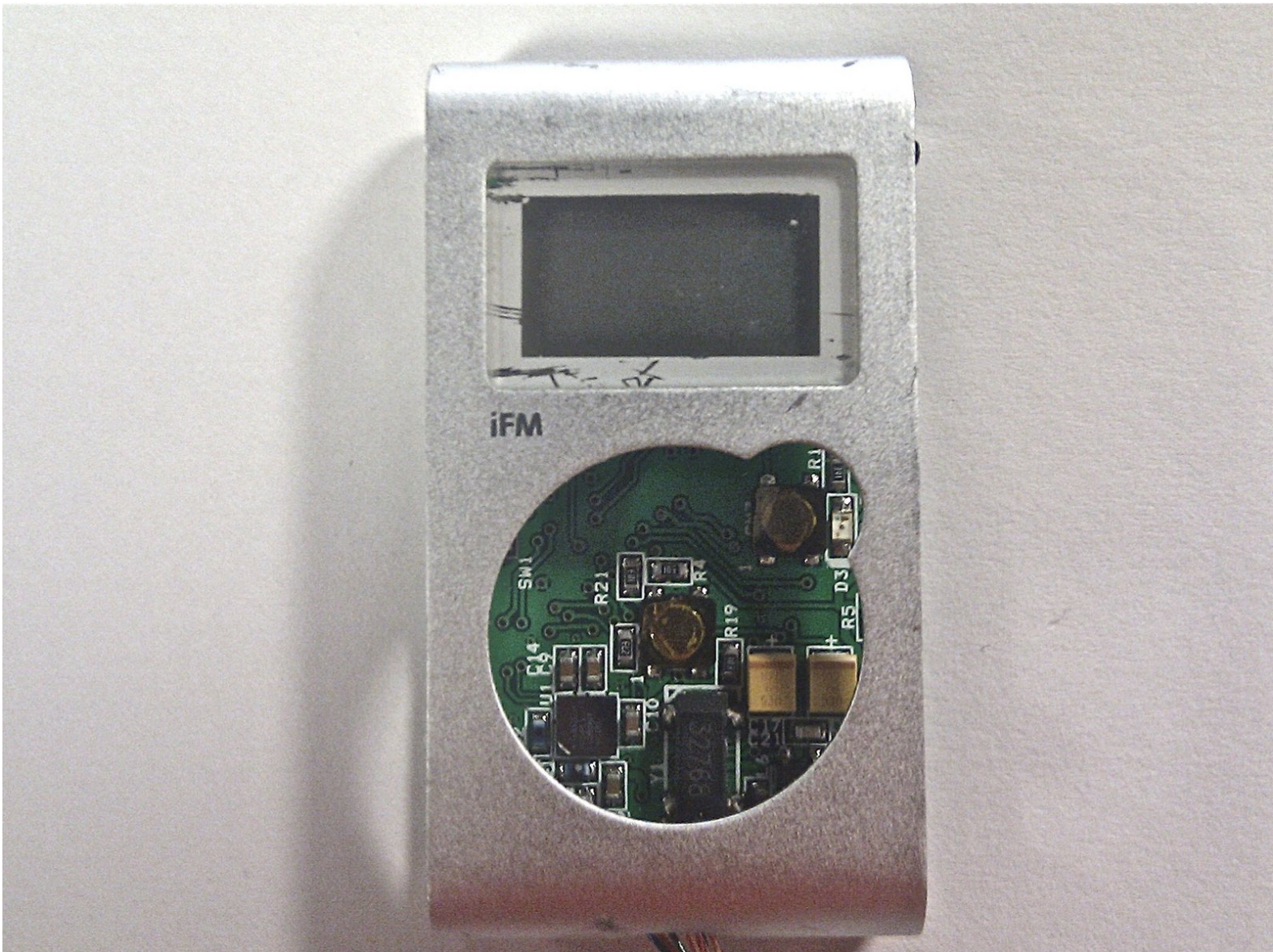




Griffin iFM 4027 LCD Screen Cover Replacement

The guide will teach the user how to remove the LCD screen cover, allowing the user access to the LCD screen and circuit board.

Written By: Alexander



INTRODUCTION

This guide will teach you how to remove the circuit board from the device. This will allow the simple installation of the LCD screen cover.



TOOLS:

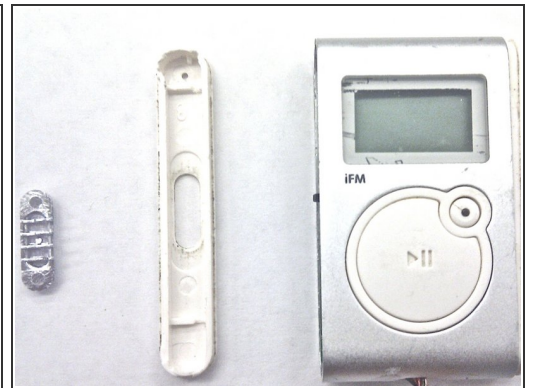
- [iFixit Opening Tools](#) (1)
-

Step 1 — Left Side Panel (Screen Side Up)



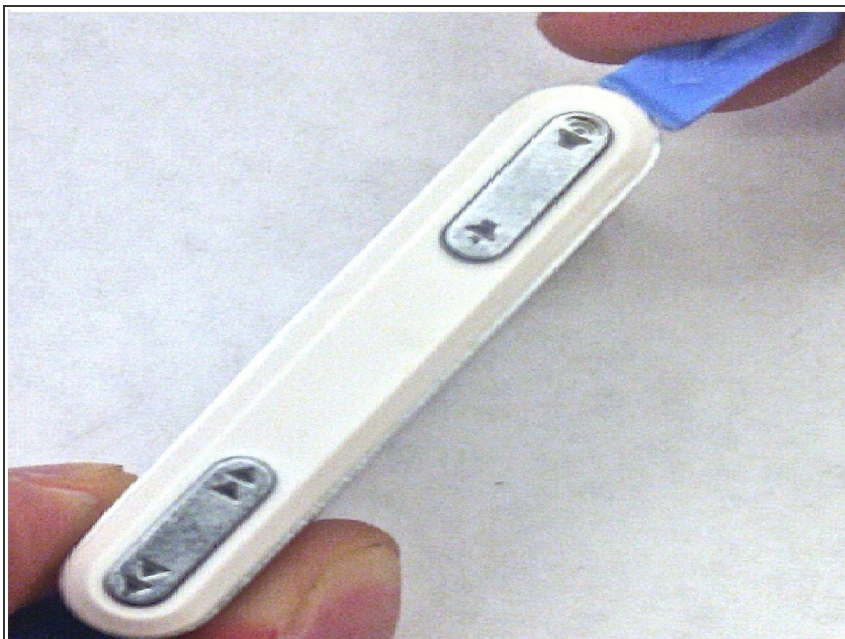
- Lodge the tip of the plastic opening tool into the top arc of the front panel. Apply a little force to cause the panel to detach.

Step 2



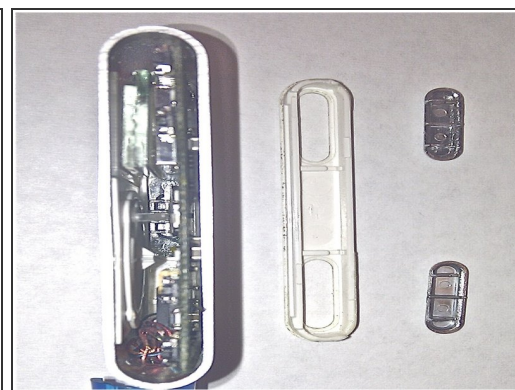
- Slide the blue opening tool along the seam applying force to continue detaching the side panel.
- Remove the button from the side panel.

Step 3 — Disassembling Griffin iFM 4027 - Right Side Panel (Screen Side Up)



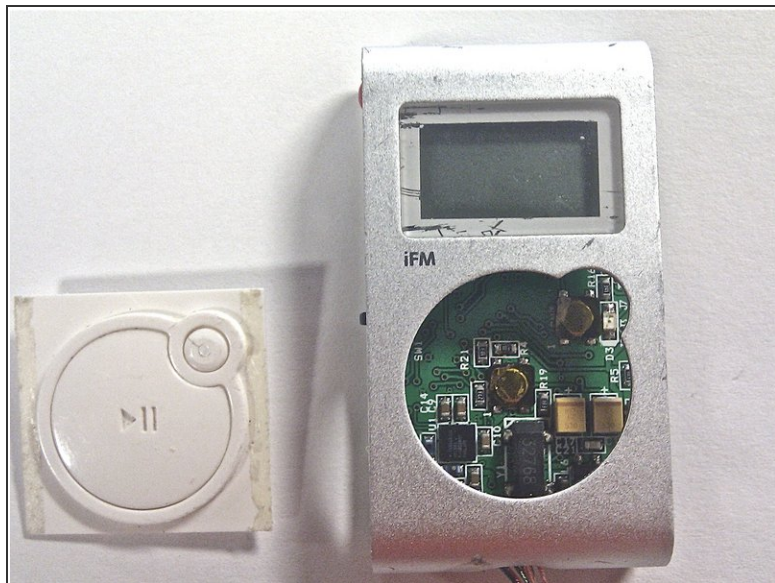
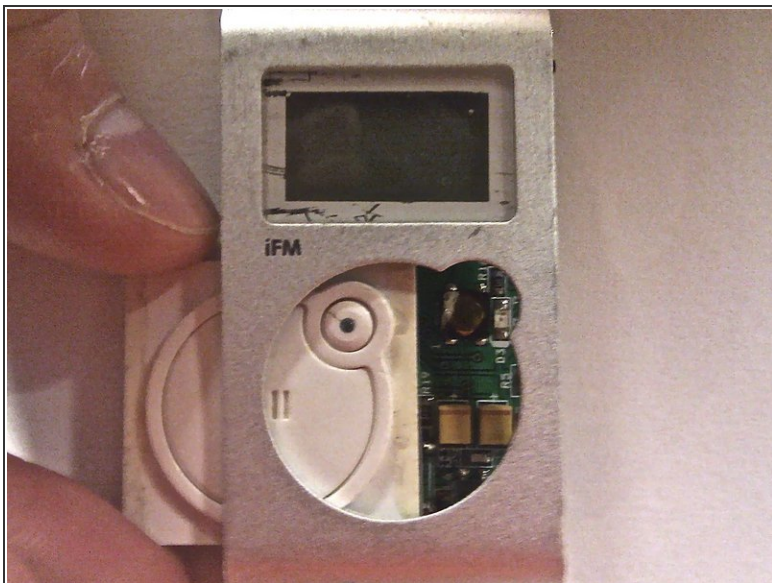
- Use the plastic opening tool.
- Lodge the tip into the corner of the device; Applying pressure upward, allowing the panel to be released.

Step 4



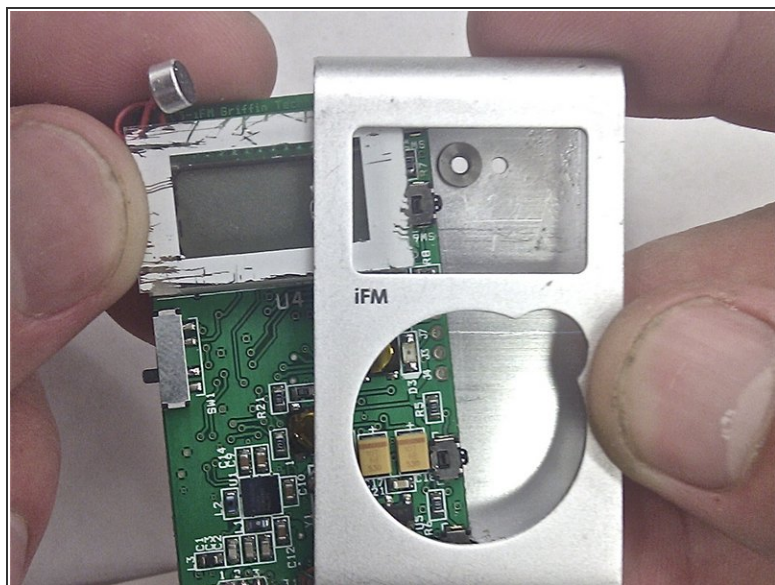
- The side panel can now be detached using your fingers.
- The buttons can be dislodged by turning the panel over and shaking it, if necessary.

Step 5 — Central Button



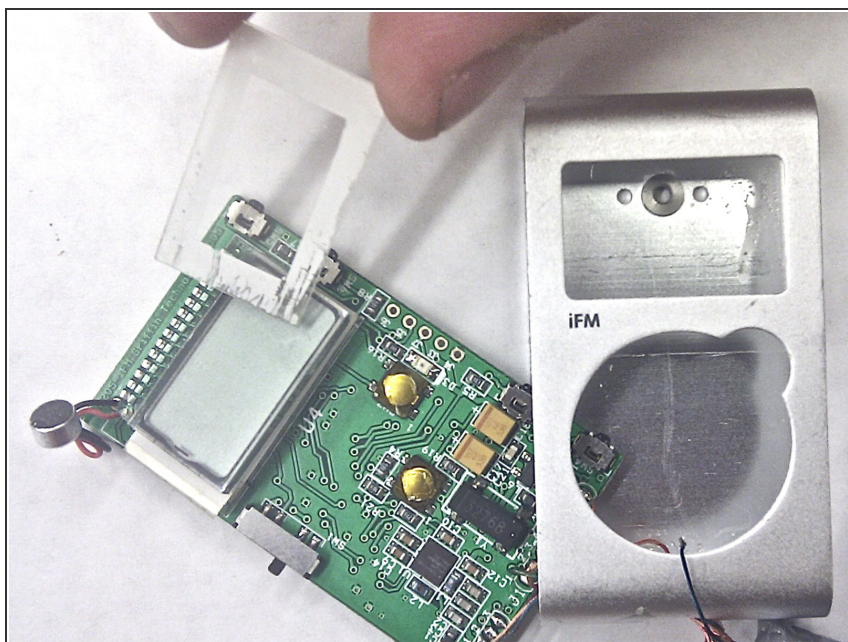
- The central button can easily be removed by using your fingers or tweezers to push the button out towards the left panel.

Step 6 — LCD Screen Cover



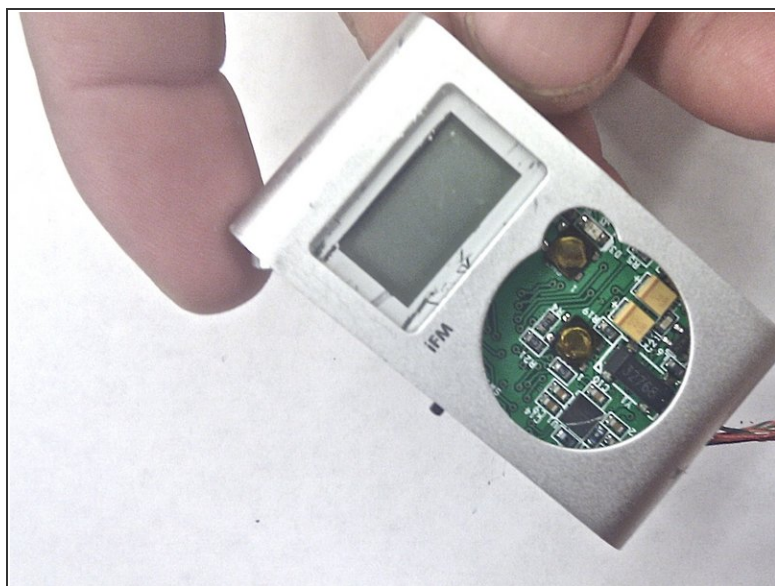
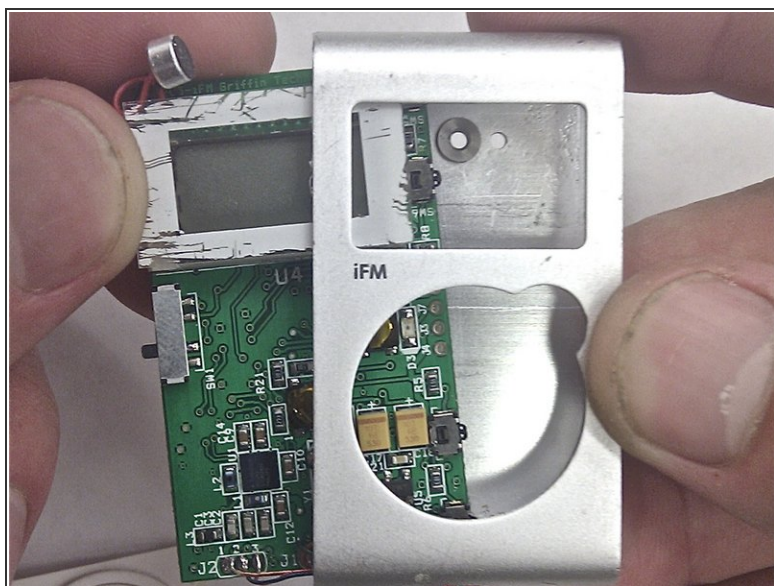
- Carefully remove the circuit board/LCD component from the device by pulling it towards the left open panel.

Step 7



- The screen cover can be easily lifted and removed from the LCD screen.

Step 8 — LCD Screen Cover



- Place the screen cover on top of the LCD so it covers its entirety and carefully slide the circuit board/LCD back into the device.

After installation, the device should look similar to that which is depicted in the cover image (top right of page).