



Griffin iFM 4027 Left Side Panel (Screen Side Up) Replacement

This guide will demonstrate to the user how to install the left side panel and its associated buttons.

Written By: Alexander



INTRODUCTION

This guide will teach the user how to install the left side panel and align the "mode" button correctly. It will also show the proper placement of the button to restore the device to its retail form.



TOOLS:

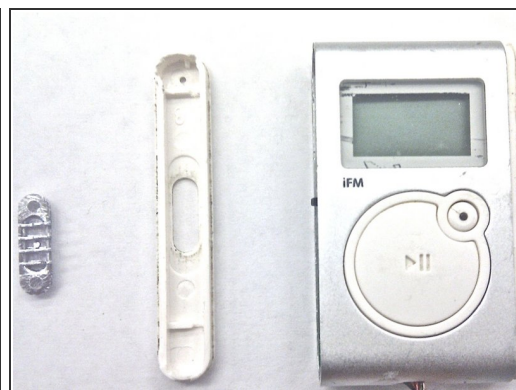
- [iFixit Opening Tools](#) (1)
-

Step 1 — Left Side Panel (Screen Side Up)



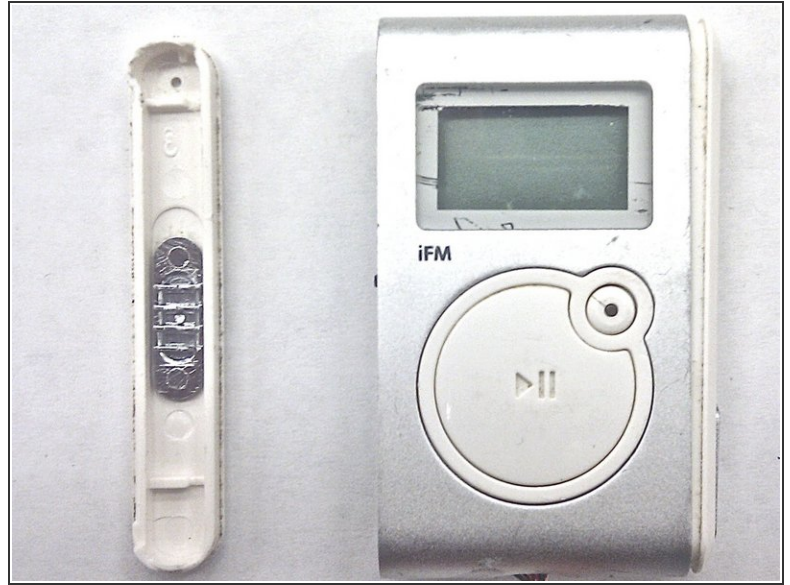
- Lodge the tip of the plastic opening tool into the top arc of the front panel. Apply a little force to cause the panel to detach.

Step 2



- Slide the blue opening tool along the seam applying force to continue detaching the side panel.
- Remove the button from the side panel.

Step 3 — Left Side Panel (Screen Side Up)



- i** Ensure that the elevated grating is on the right side of the button in respect to the panel position seen in the first image.
- Insert the button into the side panel's designated slot using your fingers or tweezers if necessary.

Step 4



- Insert the top arc of the side panel into the top end of the device's side as seen in the second image.

Step 5



- Push the bottom end of the panel into the panel slot and apply additional pressure to the side panel to ensure it is attached to the device securely.

After installation, the device should look similar to that which is depicted in the cover image (top right of page).