



Griffin iFM 4027 Right Side Panel (Screen Side Up) Replacement

This guide will demonstrate to the user how to install the right side panel and its associated buttons.

Written By: Alexander



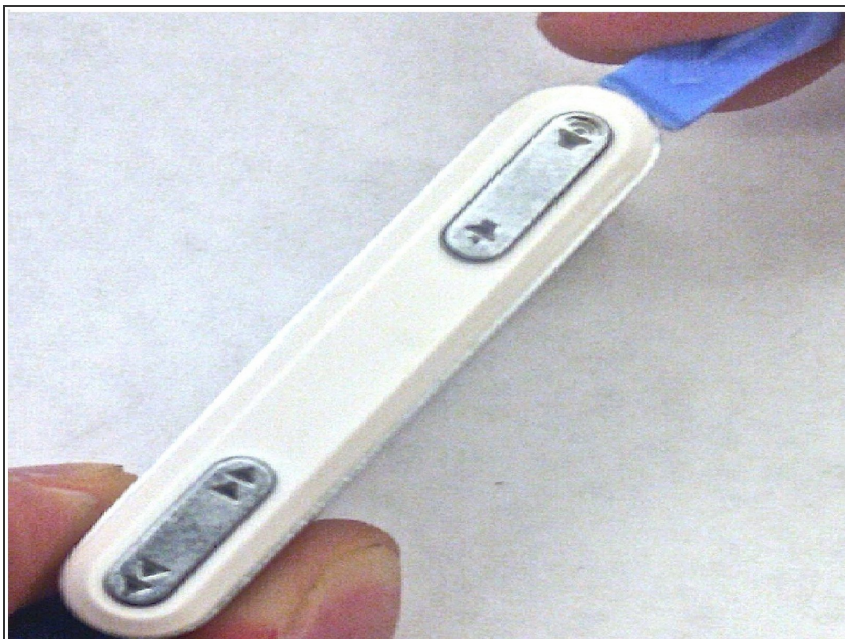
INTRODUCTION

This guide will teach the user how to install the right side panel and align the buttons correctly. It will also focus on the restoration of functionality of the device and show the proper placement of the buttons to restore the device to its retail form.

TOOLS:

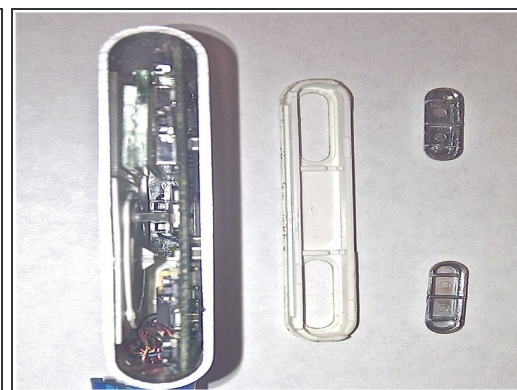
- [iFixit Opening Tools](#) (1)
-

Step 1 — Disassembling Griffin iFM 4027 - Right Side Panel (Screen Side Up)



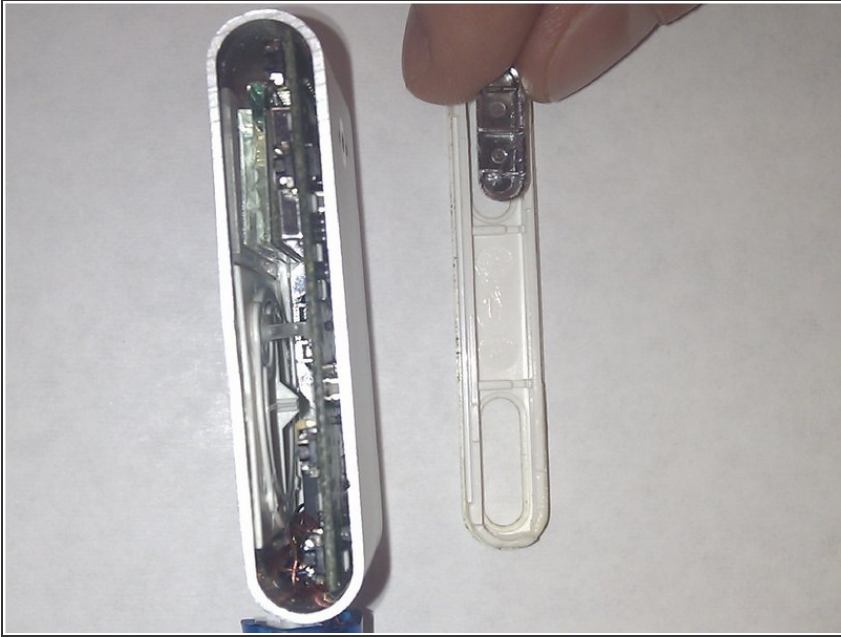
- Use the plastic opening tool.
- Lodge the tip into the corner of the device; Applying pressure upward, allowing the panel to be released.

Step 2



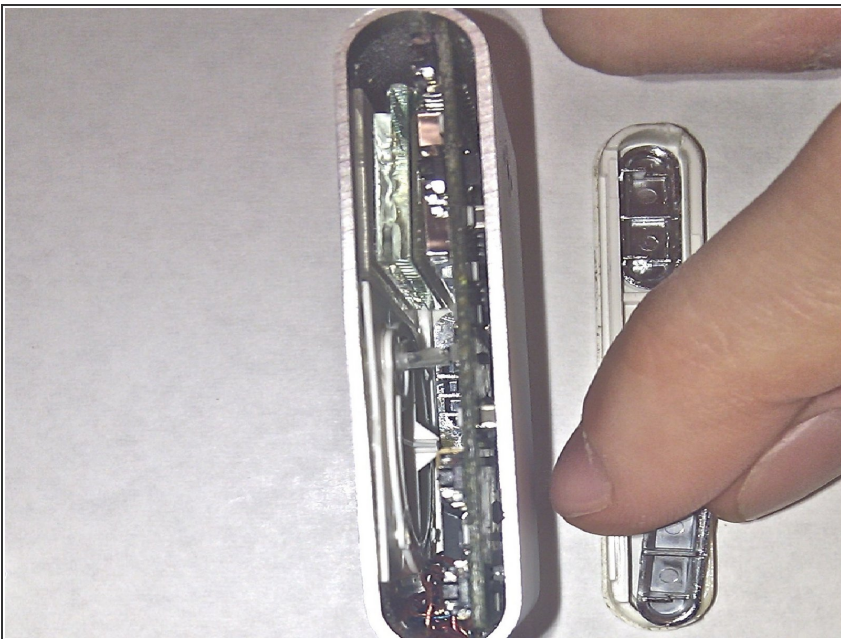
- The side panel can now be detached using your fingers.
- The buttons can be dislodged by turning the panel over and shaking it, if necessary.

Step 3 — Right Side Panel (Screen Side Up)



- ① Ensure that the elevated grating is on the left side of the button, as seen in the first posted image.
- Insert the button with the sound diagrams to the top section of the panel.

Step 4



- ① Ensure that the elevated grating is on the left side of the button, as seen in the posted image.
- Insert the button with the two arrows to the bottom section of the panel.

Step 5



- ❗ Be careful with handling the panel during placement. Utilize gravity to keep the buttons from falling out.
- Using your fingers, carefully click in the bottom end of the panel, followed by the top end of the panel.

Step 6



- Apply pressure to both side panels simultaneously to ensure the device has restored original stability.

After installation, the device should look similar to that which is depicted in the cover image (top right of page).