



# Guacamole Digital Instruction Creation Introduction

Written By: JUNIOR AVOCADO ENGINEER

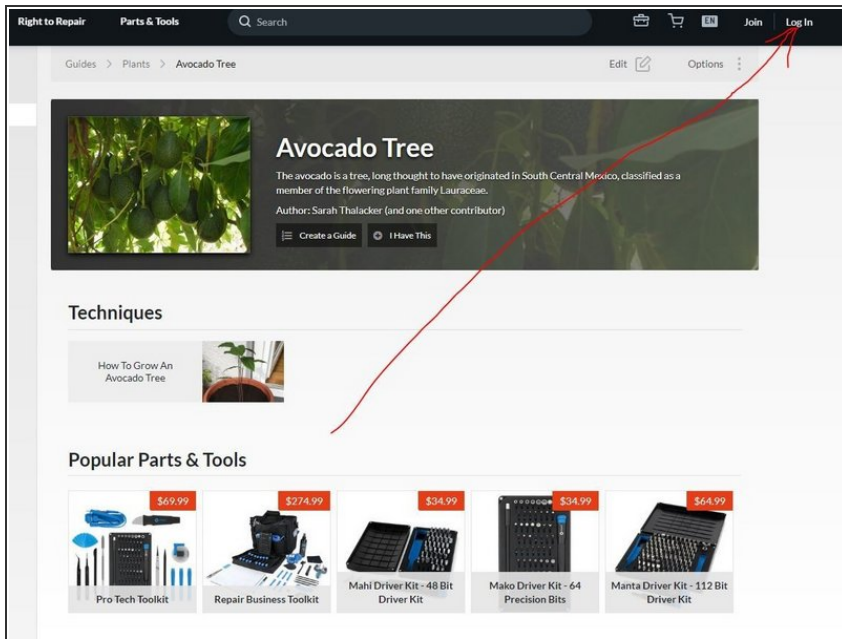
The screenshot shows the iFixit website interface. At the top is a dark navigation bar with links for 'Right to Repair', 'Parts & Tools', a search bar, and icons for a shopping cart, language (EN), and user actions (Join, Log In). Below this is a breadcrumb trail: 'Guides > Plants > Avocado Tree'. The main content area features a large header for 'Avocado Tree' with a photo of avocados on a tree. Text describes the avocado as a tree originating in South Central Mexico. The author is listed as Sarah Thalacker. Below the header are two buttons: 'Create a Guide' and 'I Have This'. A section titled 'Techniques' follows, with a card for 'How To Grow An Avocado Tree' featuring a photo of a potted plant. Below that is a 'Popular Parts & Tools' section displaying five product cards with images and prices:

Product	Price
Pro Tech Toolkit	\$69.99
Repair Business Toolkit	\$274.99
Mahi Driver Kit - 48 Bit Driver Kit	\$34.99
Mako Driver Kit - 64 Precision Bits	\$34.99
Manta Driver Kit - 112 Bit Driver Kit	\$64.99

# INTRODUCTION

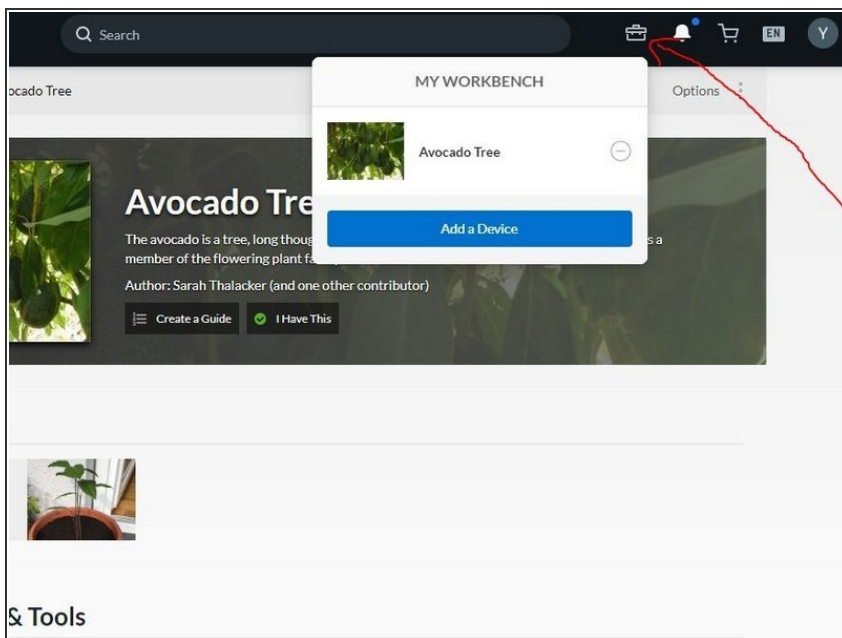
In this instruction we are going to see how to create a digital instruction on this platform.

## Step 1 — Register and login user



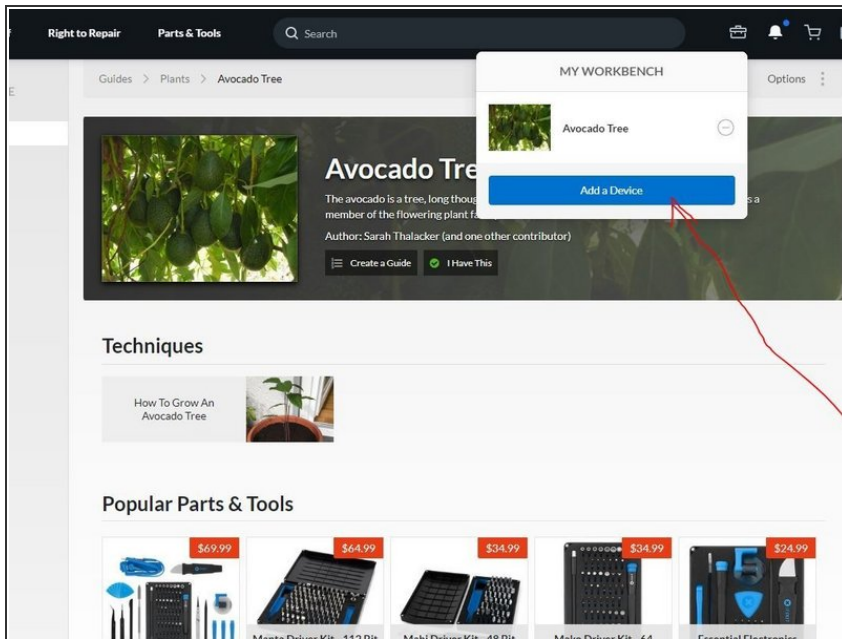
- How to create a guide on ifixit.
- First Login by creating an user.

## Step 2 — Toolbox Icon is the WORKBENCH



- Click on the toolbox
- Click on add a device. In this example I have chosen the Avocado Tree, as this website is for technology mainly.
- It will take some time until someone spots this and try to report and ruin our research development open source area.
- But in theory this is a private Guide.
- Only those with the link can access to it.

## Step 3 — Add device to WORKBENCH



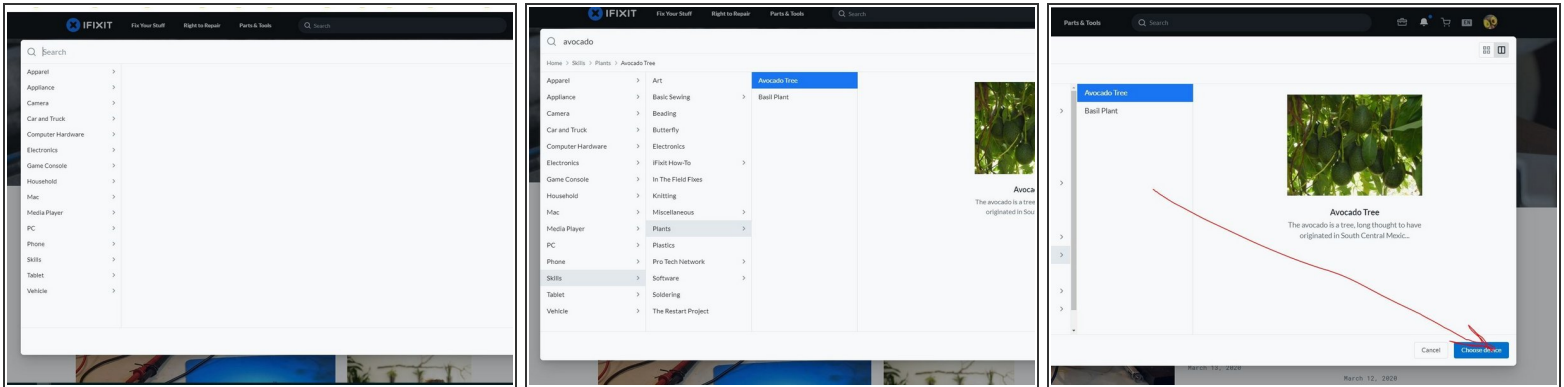
- Add the avocado tree device to "MY WORKBENCH"
- You will be now able to choose that device from "MY WORKBENCH"
- And create a guide to see how it feels to work using this tool and it's environment.

## Step 4 — This is a missing step



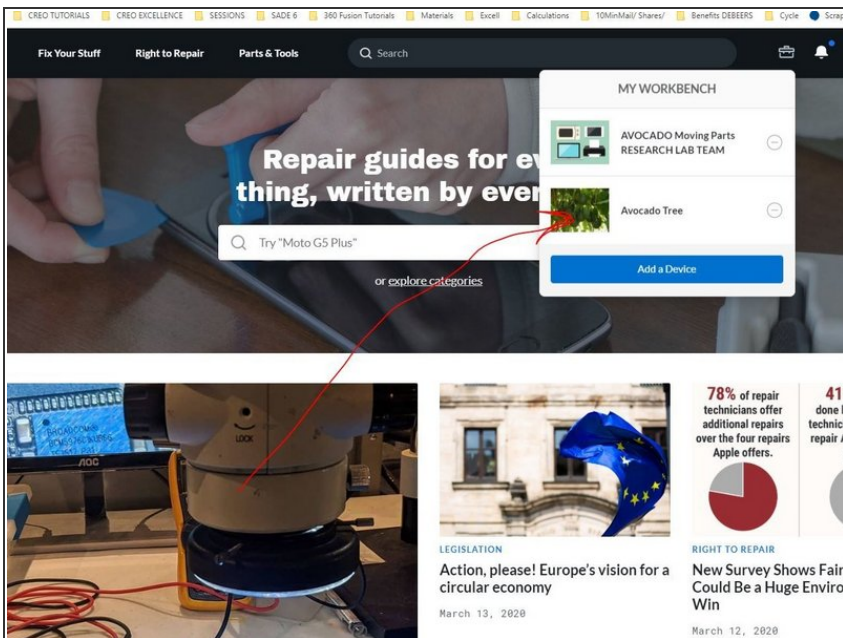
- This is a virtual step, in the practise, on a realistic situation this step is missing.
- It is okey to continue to the next step.
- This step is finished.

## Step 5 — Missing a step?



- You can't find the device right?
- There is a step missing between step 3 & 5.
- The guide [GUACAMOLE Missing a step](#) Will guide you in case you need to add a missing step.

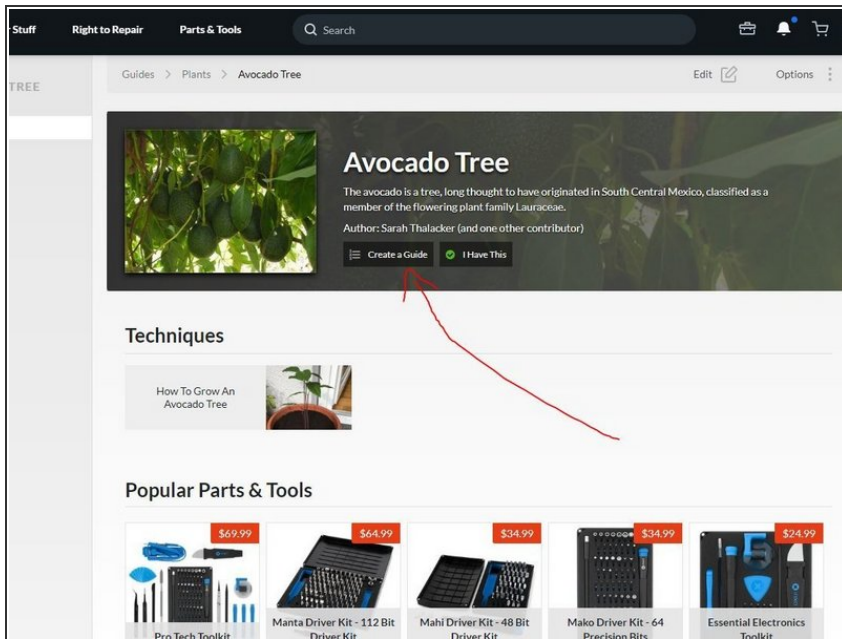
## Step 6 — Click on Device



- Once you have added the device
- You can click on it

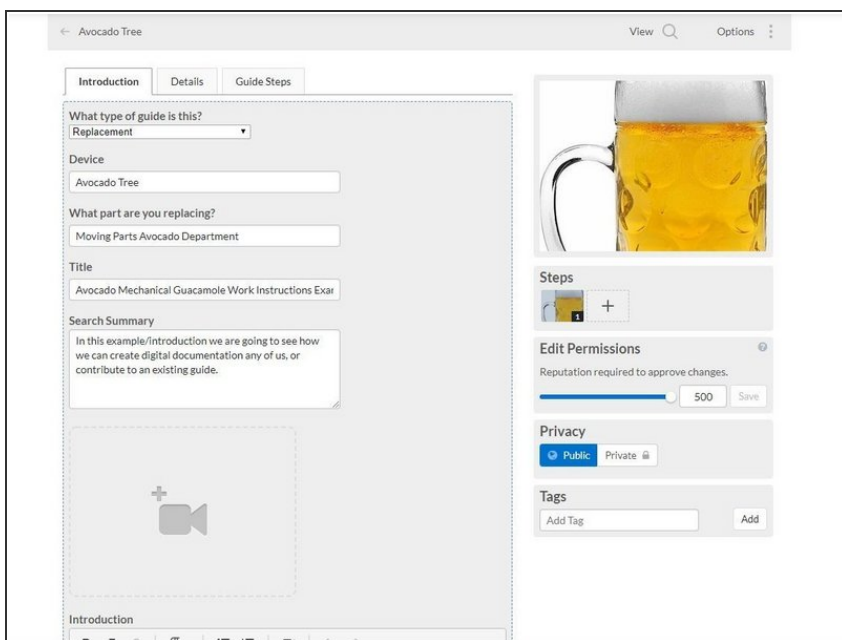


## Step 7 — Create a GUIDE



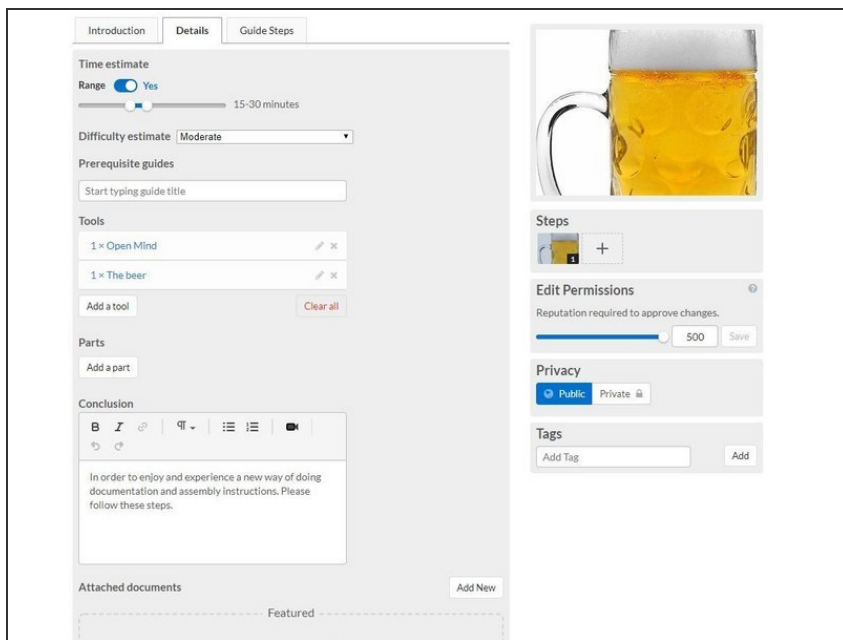
- Once your device is added click on the device.
- In this example our great AVOCADO Tree is the starting point.
- Once you click on it, you will be redirected to this place.
- Click on Create a Guide

## Step 8 — Your guide first step.



- Adding introduction

## Step 9 — Adding details tab



The screenshot shows the 'Details' tab of a digital instruction creation interface. The interface is divided into several sections:

- Time estimate:** Includes a 'Range' toggle set to 'Yes', a slider for '15-30 minutes', and a 'Difficulty estimate' dropdown set to 'Moderate'.
- Prerequisite guides:** A text input field with the placeholder 'Start typing guide title'.
- Tools:** A list of tools with checkboxes and delete icons. Currently, '1 × Open Mind' and '1 × The beer' are listed. There are 'Add a tool' and 'Clear all' buttons.
- Parts:** A section with an 'Add a part' button.
- Conclusion:** A rich text editor with a toolbar (bold, italic, link, unlink, list, list, image) and a text area containing the text: 'In order to enjoy and experience a new way of doing documentation and assembly instructions. Please follow these steps.'
- Attached documents:** A section with an 'Add New' button and a 'Featured' label.
- Right sidebar:** Contains a large image of a beer mug, a 'Steps' section with a '+', an 'Edit Permissions' section with a reputation slider set to 500 and a 'Save' button, a 'Privacy' section with 'Public' and 'Private' radio buttons, and a 'Tags' section with an 'Add Tag' button.

- Here you can set expected time.
- This website/environment doesn't have the full features we will see on a finished product Like Dozuki/Andea.
- But when you add steps and in general you make a guide/instruction/manual. There will be check box, next steps and any type of front end form that requires from the user to interact with it.
- When they interact with it, through big data and algorithms, the system will give us performance times and will spot steps and points where we should optimise the guide as it reflects where most of users slow down.

To reassemble your device, follow these instructions in reverse order.