



HEC Remote Control Teardown

By the end of this guide you will be able to teardown the HEC remote control

Written By: Travis Go



INTRODUCTION

In this guide you will learn how to teardown the HEC remote control

TOOLS:

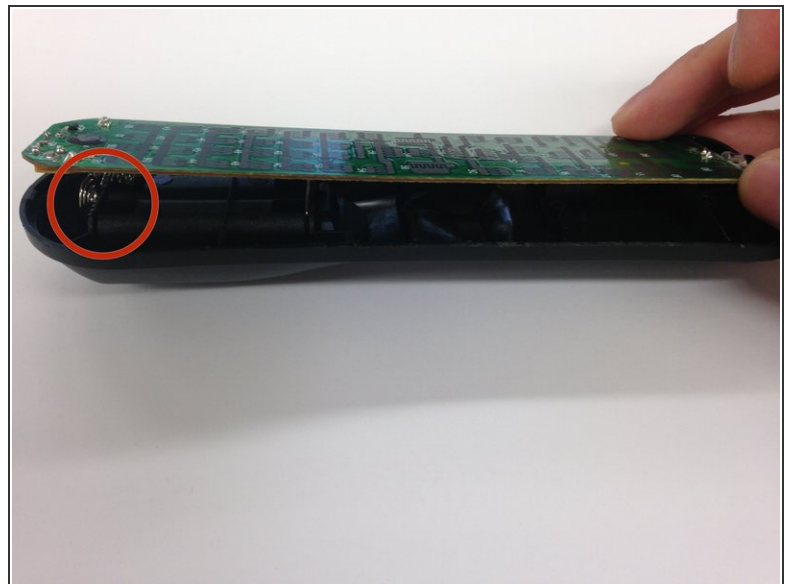
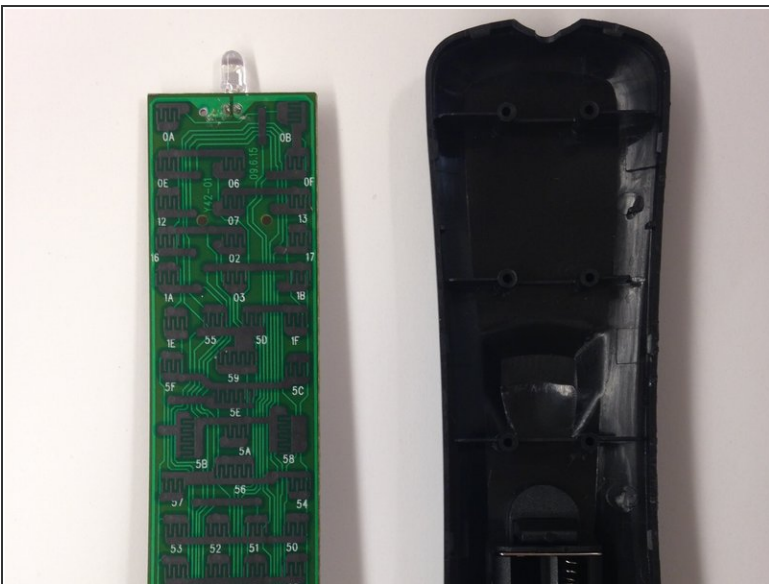
- [2.5 mm Flathead Screwdriver](#) (1)
-

Step 1 — HEC Remote Control Teardown



- Using a flat head screwdriver pry open the remote

Step 2



- Detach the circuit board from the bottom half of the remote casing.
- Be careful when removing the circuit board from the casing.
- ⚠ Springs are attached to the remote casing

Step 3



- Remove plastic molding attached to the top half of the remote casing

Step 4



- Remove the lid encasing the batteries

To reassemble your device, follow these instructions in reverse order.