



# HKC P886A LCD Replacement

After completing this guide you will have removed and replaced the device's LCD screen.

Written By: Cassidy



---

## INTRODUCTION

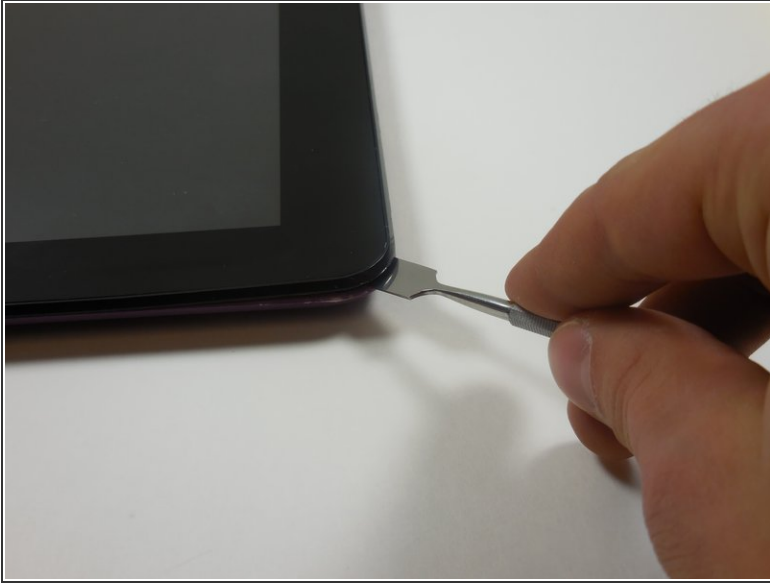
This guide will walk the user through the basic steps necessary to replace the LCD screen on the HKC p886a 8" tablet.

---

### TOOLS:

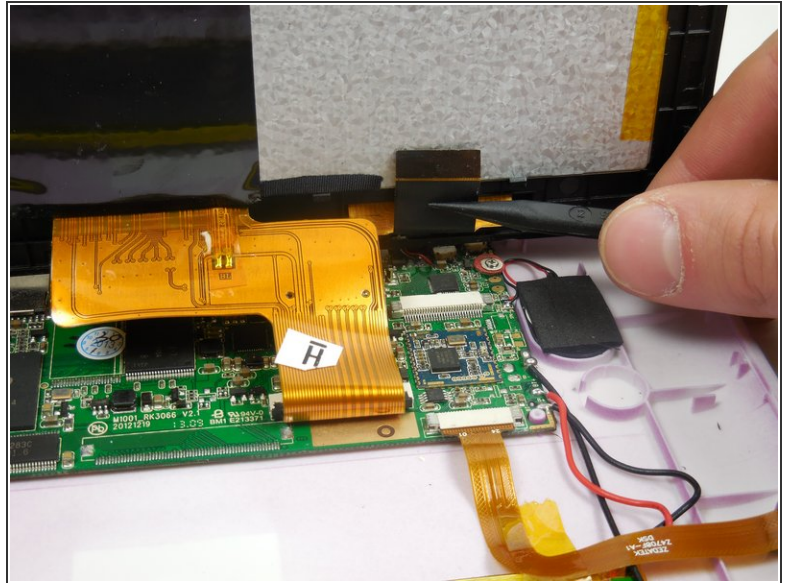
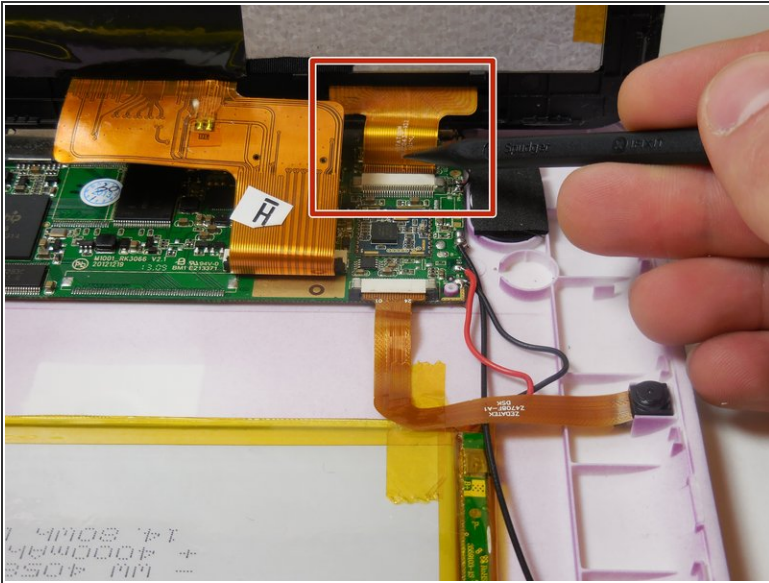
- [Metal Spudger](#) (1)
  - [Spudger](#) (1)
-

## Step 1 — Disassembling HKC P886A Overall Device Disassembly



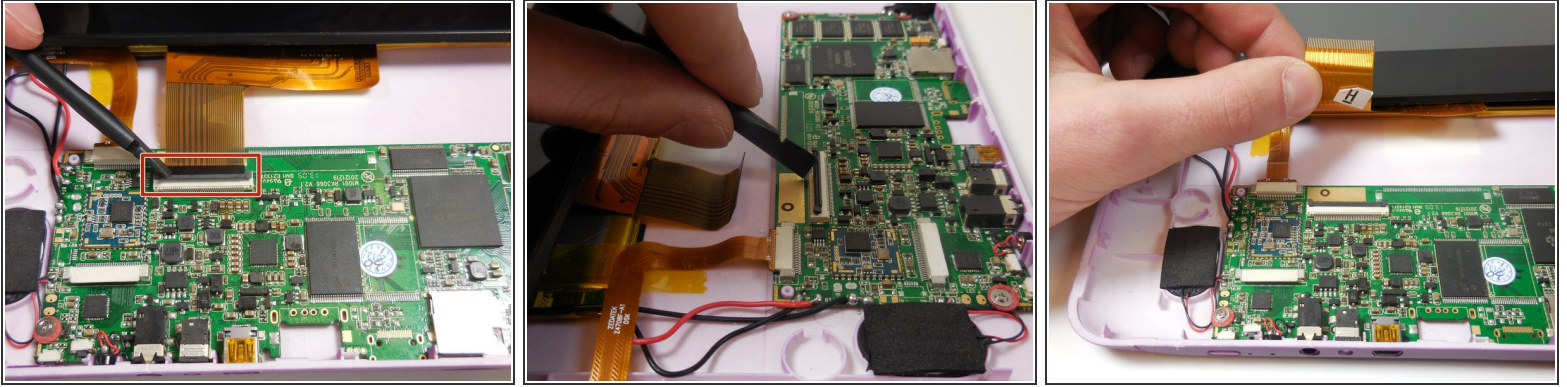
- Insert the flat tip of the metal spudger into the seam between the back panel and the screen.
- ⓘ The easiest insertion point for the metal spudger is at the corners of the device.
- Slide the spudger across the perimeter of the device and gently pry apart at each corner.
- ⚠ When the screen is separated from the back panel there will be two connected ribbon cables between the two halves of the device. These cables must be disconnected before further disassembly.
- After the pressure clamps are released orient the device so that the speaker is to the right and the screen is tilted away from you.

## Step 2



- ⓘ The device is oriented with the camera to the right and the external button towards the top of the picture.
  - Locate the shorter ribbon cable and the black pressure tabs that hold the ribbon cable in place.
- ⚠ The tabs used to connect the ribbon cables are fragile and can easily be damaged.
  - Use the plastic spudger to gently slide the tabs about 2mm away from connector.
- ⓘ Once tabs are successfully disconnected the ribbon cable should come out of the port without resistance.

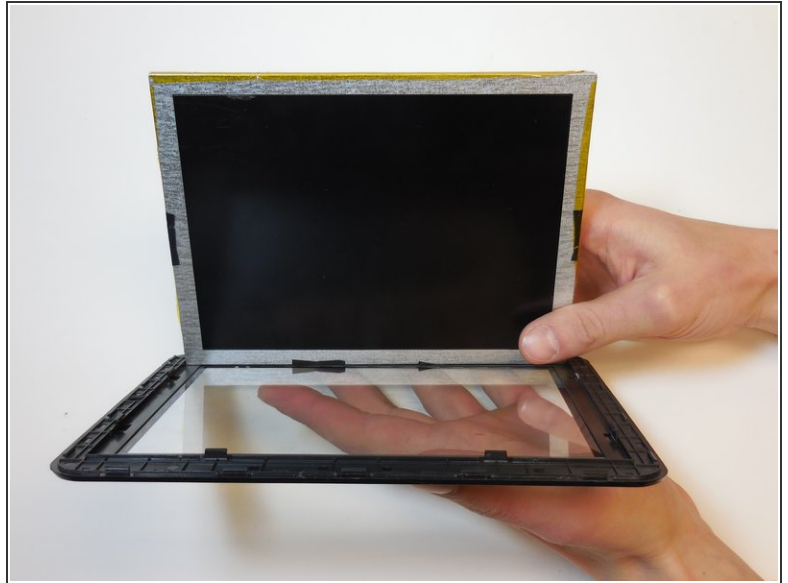
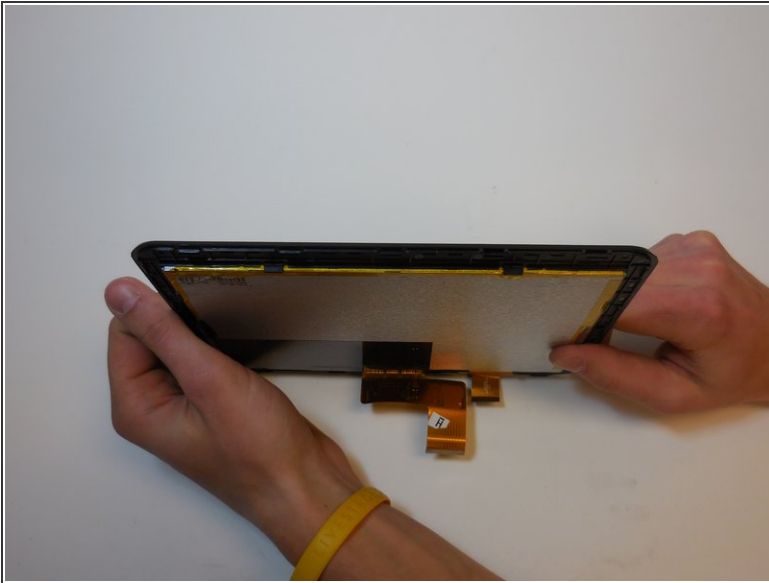
## Step 3




- Locate the longer ribbon cable and the pressure clamp that holds the cable in the connection port.
- Using the plastic spudger, flip the black locking clip up.
- ⓘ The pressure clip will click when it has been disengaged.
- Once the clip is unlocked, the cable should slide out without resistance
- ⓘ In photo 1 the device is oriented with the camera to the left and external buttons towards the bottom. In photo 2 the device is oriented with the camera toward the user. In photo 3 the camera is to the left.



## Step 4 — LCD



 The screen assembly is a delicate component and some prying is involved. Avoid deforming screen to avoid further damage.

- Gently bend the matrix away from the screen to release the pressure clamps.
- Bend one side at a time applying equal force in order to reduce stress on the matrix from the bending.
- Once all pressure clamps are disengaged, separate the screen and matrix without touching the front of either component.
- Replacement matrices can be found at this link: [screensurgeons.com](https://www.screensurgeons.com)

## Step 5



- To reassemble to display, seat the LCD screen in the pressure clamps and gently push components together.
- ⓘ Do not touch the front of the matrix or screen to avoid getting fingerprints and smudges on device.

To reassemble your device, follow these instructions in reverse order.