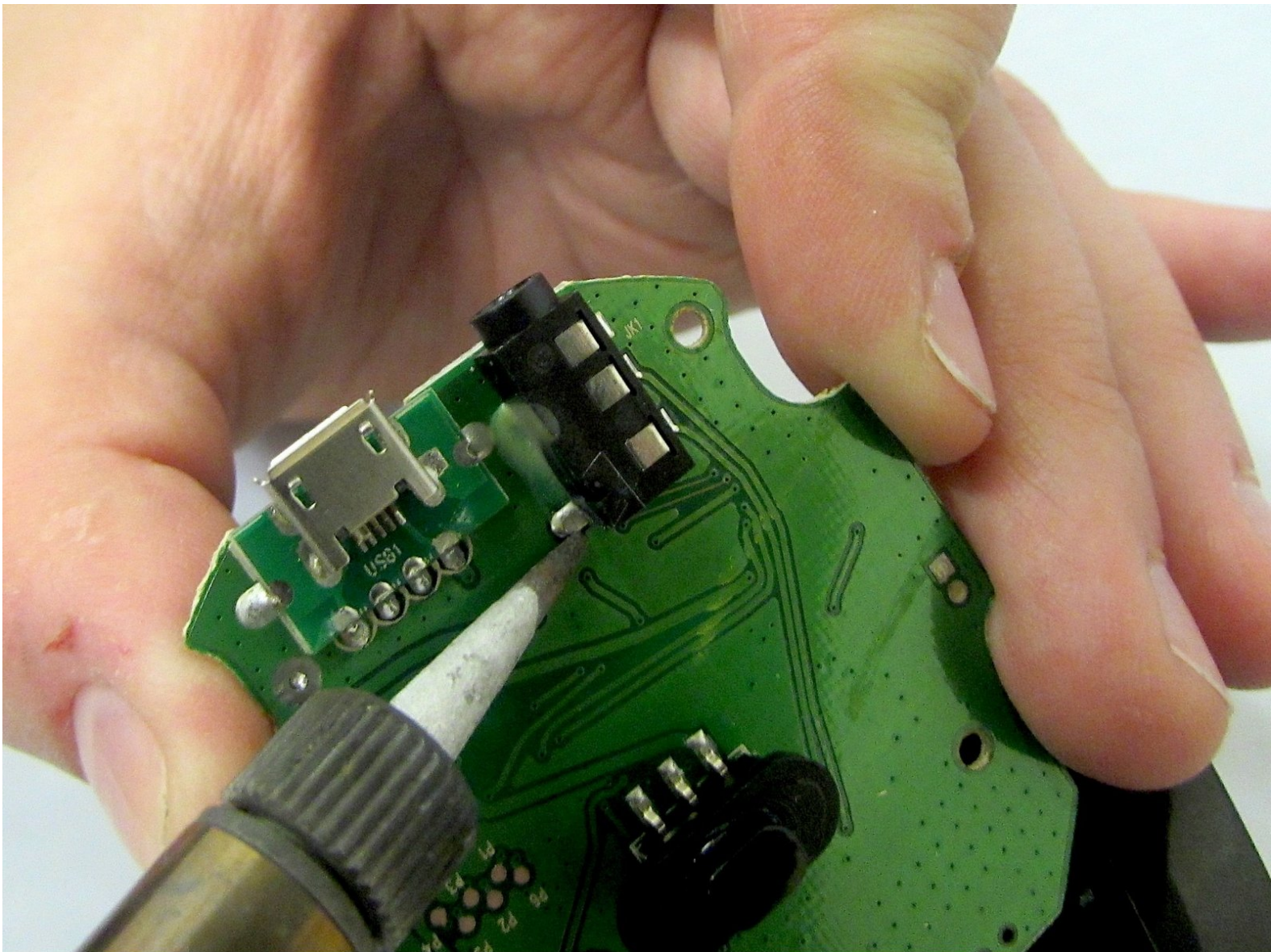




HMDX Chill Audio Port Replacement

This guide will show how to replace the audio port on the HMDX Chill.

Written By: Jourdan Holubasch



INTRODUCTION

If your HMDX Chill will not play through headphones or any other audio port device the problem can be fixed by changing out the audio port. This guide will show how to disassemble the HMDX Chill. This guide will also show the way through the device to locate the audio port in order to replace the defective audio port with a properly functioning audio port.



TOOLS:

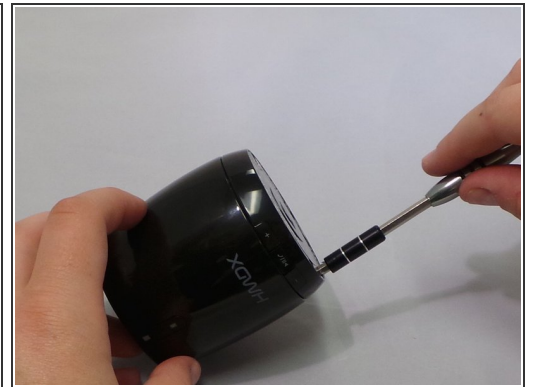
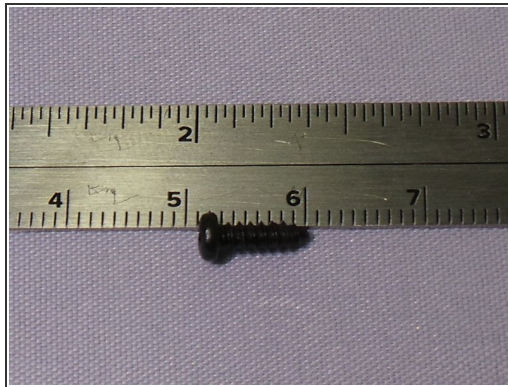
- [Soldering Iron](#) (1)
 - [Metal Spudger](#) (1)
 - [Phillips #1 Screwdriver](#) (1)
-

Step 1 — Remove Rubber Base



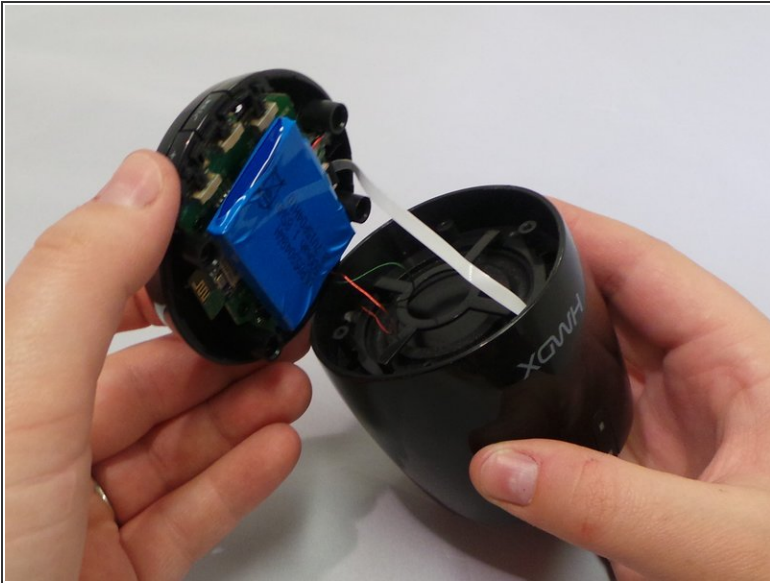
- Insert a metal spudger under the rubber base and pry the rubber base off.

Step 2 — Unscrew the Four Bottom Screws



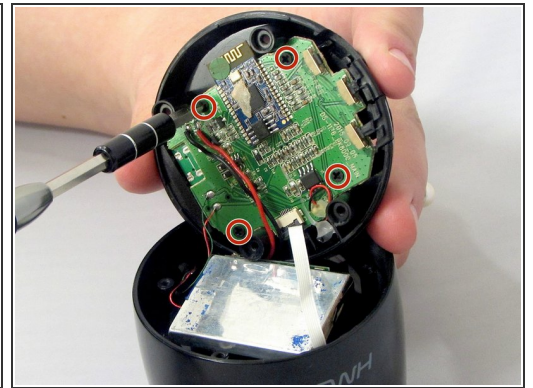
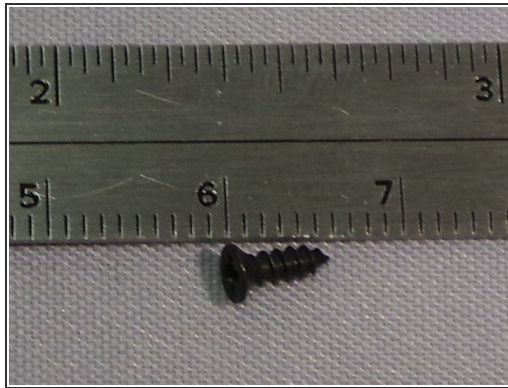
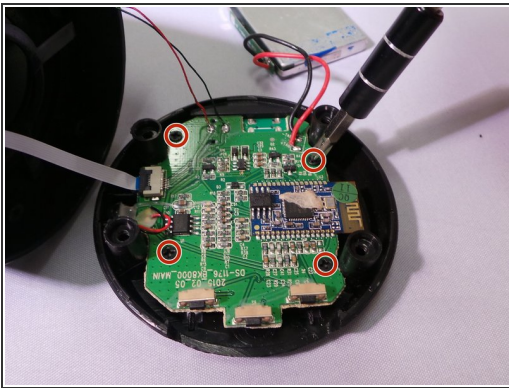
- Remove the four 0.9 inch Phillips screws from the base of the device.

Step 3 — Remove the Base of the Speaker



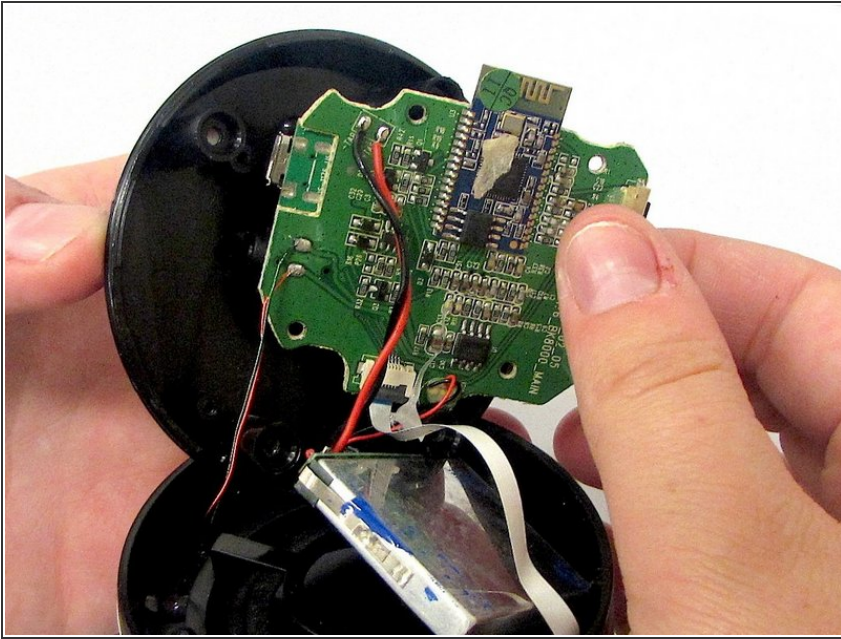
- Grip the base of the HMDX Chill and pull upwards.

Step 4 — Unscrew the Motherboard



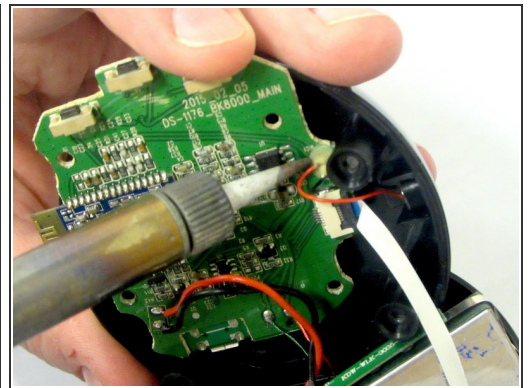
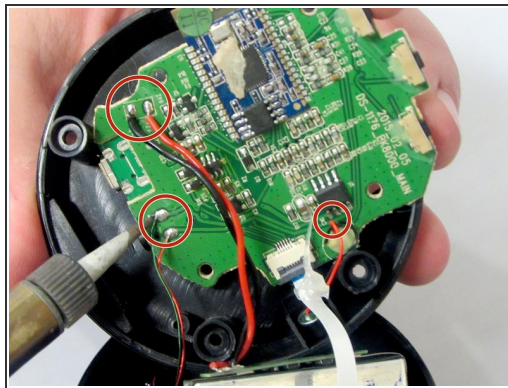
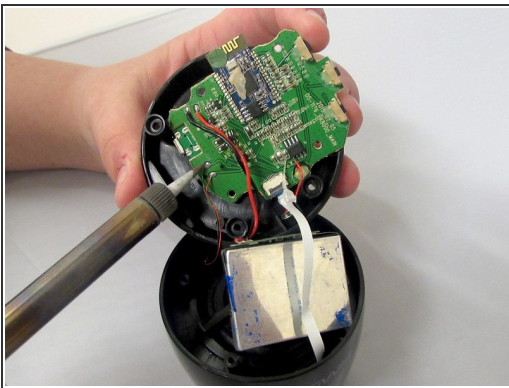
- Using a PH1 screwdriver, unscrew the four 0.5 inch screws securing the motherboard to the base of the device.

Step 5 — Remove the Motherboard from the Base



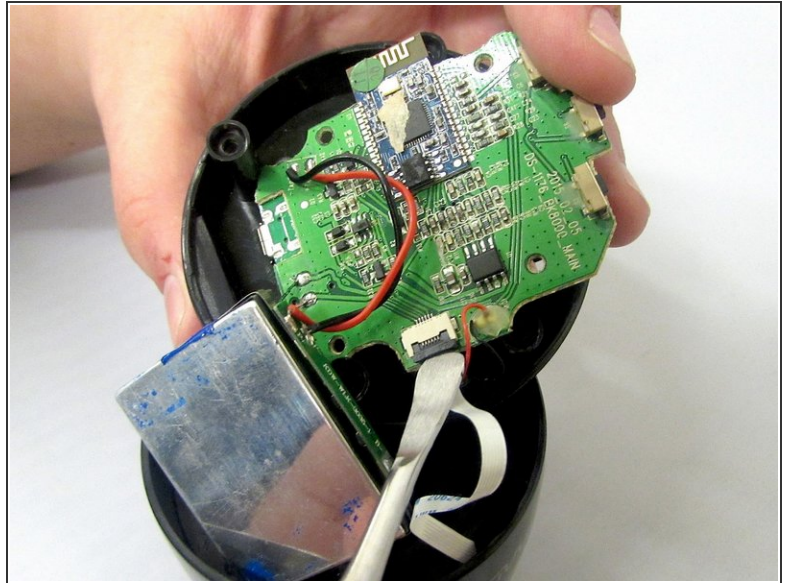
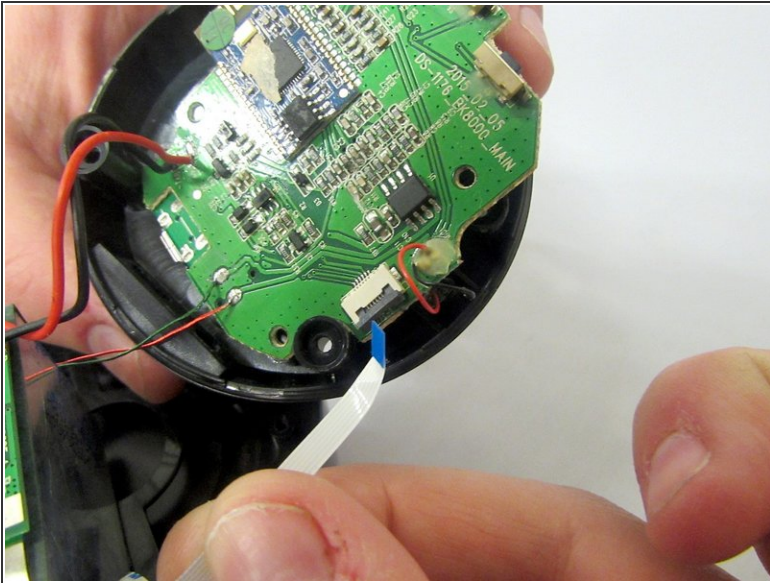
- Remove the motherboard from the device
- ⚠ Do not pull too hard as it is still attached to the base via wires.

Step 6 — Desolder Wires from the Motherboard



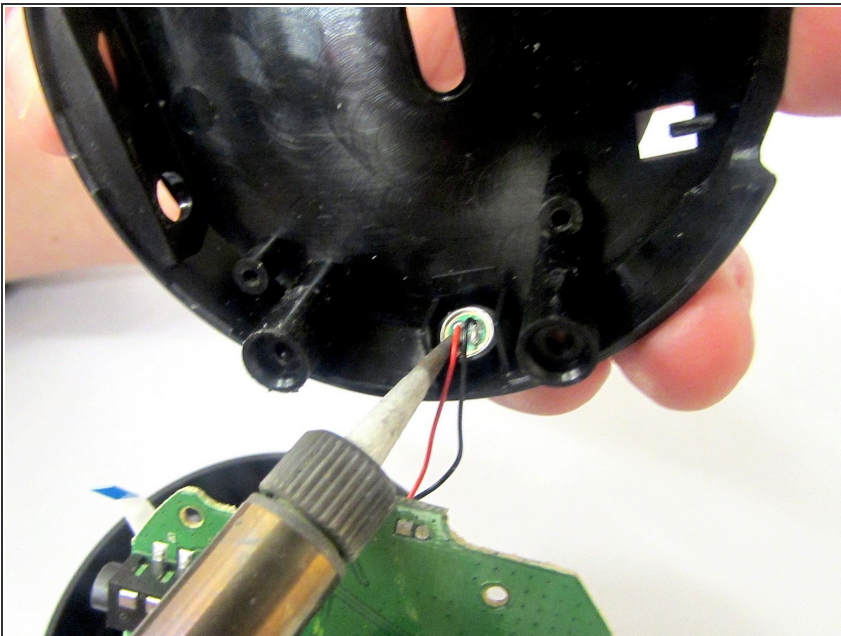
- Using a soldering iron to desolder the wires attaching the motherboard to the case.

Step 7 — Remove Connection Wire



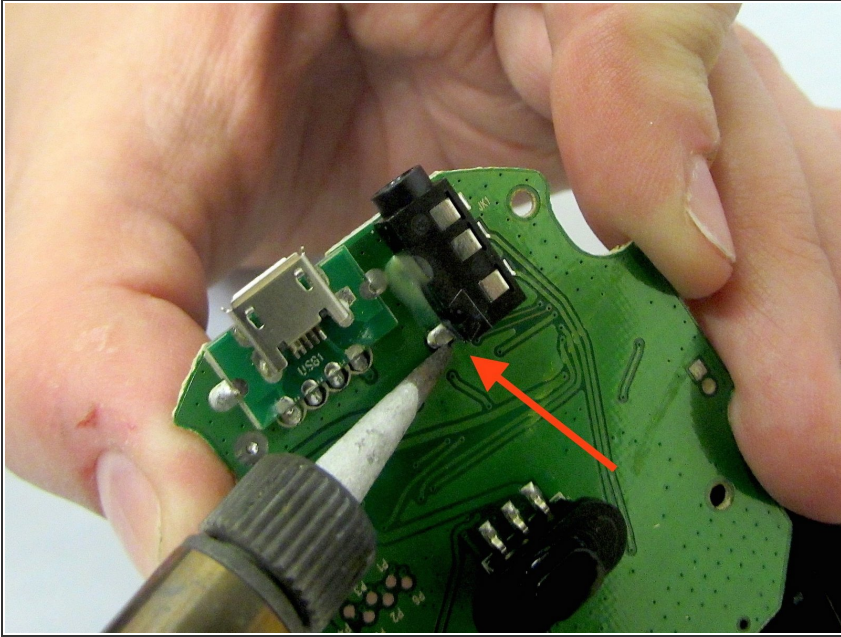
- Insert the spudger between the case and the wire and lever it upwards.
 - This will cause the case to open.
- Pull the wire from behind the motherboard.

Step 8



- Using a soldering iron, desolder the connection from the motherboard to the base of the HMDX Chill.

Step 9 — Desolder Audio Jack From Motherboard



- Desolder using a soldering iron the audio jack from the motherboard.

To reassemble your device, follow these instructions in reverse order.