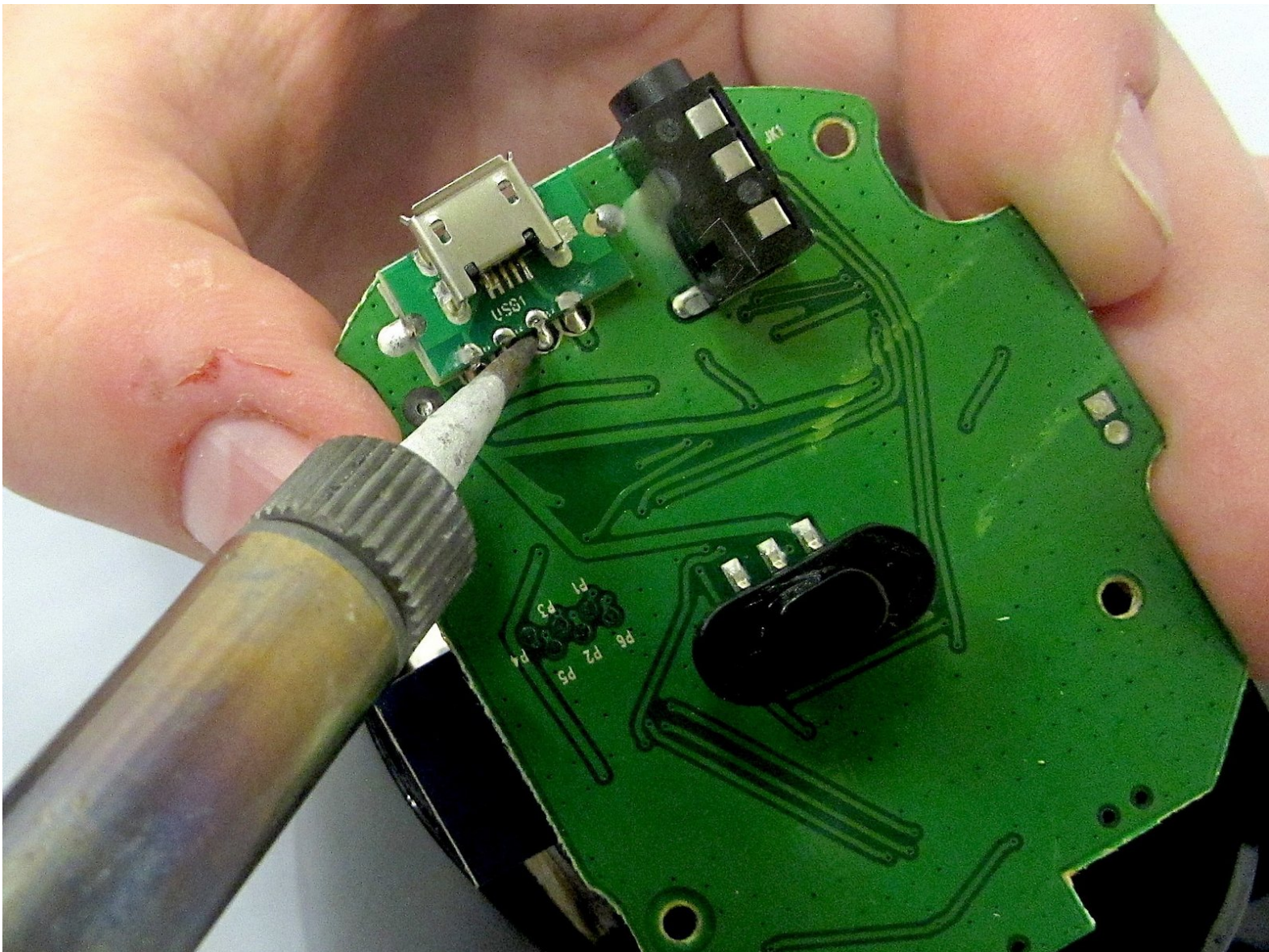




HMDX Chill Charging Port Replacement

This guide will show how to replace the charging port on the HMDX Chill.

Written By: Jourdan Holubasch



INTRODUCTION

If your HMDX Chill is no longer charging but your charging cable is functioning properly the solution to this problem can be found through replacing the USB Charging Port. This guide will show the complete dis-assembly of the device to locate the charging port. Once disassembled this guide will show how to replace the broken charging port with a working charging port.



TOOLS:

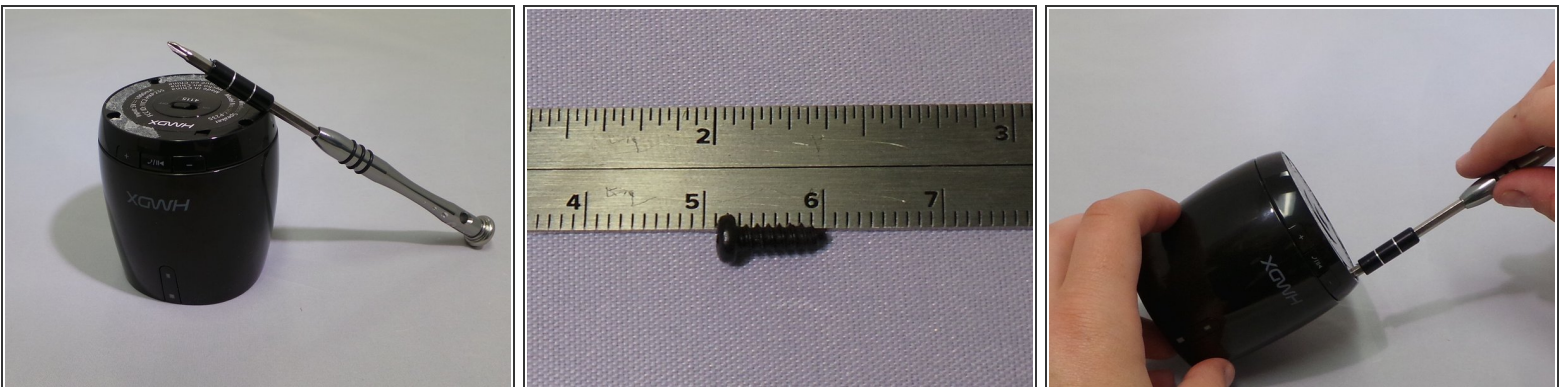
- [Soldering Iron](#) (1)
 - [Metal Spudger](#) (1)
 - [Phillips #1 Screwdriver](#) (1)
-

Step 1 — Remove Rubber Base



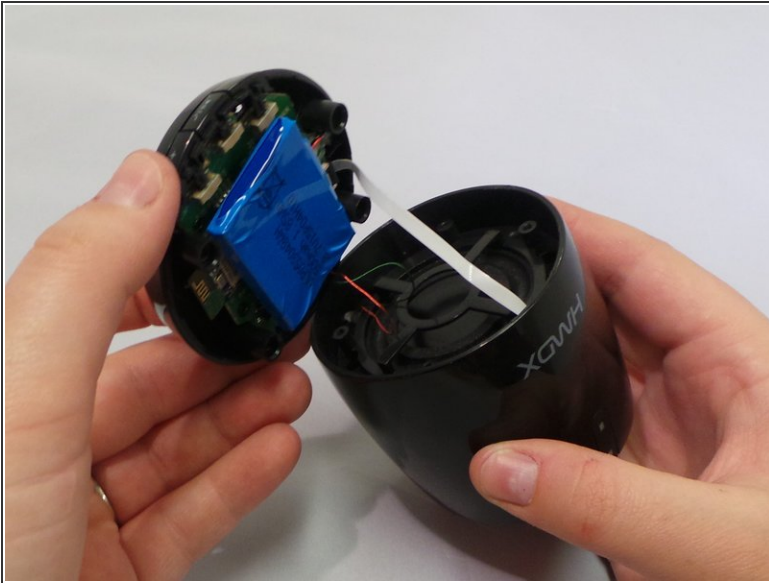
- Insert a metal spudger under the rubber base and pry the rubber base off.

Step 2 — Unscrew the Four Bottom Screws



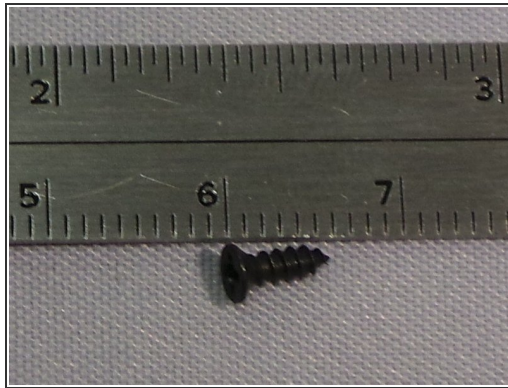
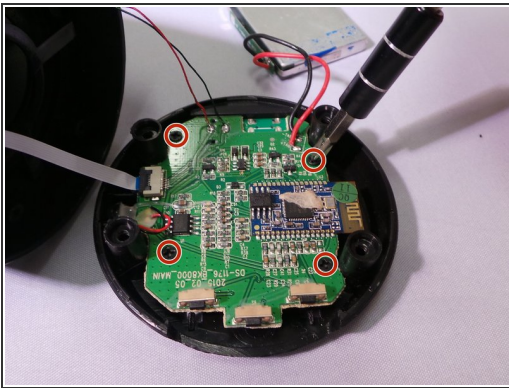
- Remove the four 0.9 inch Phillips screws from the base of the device.

Step 3 — Remove the Base of the Speaker



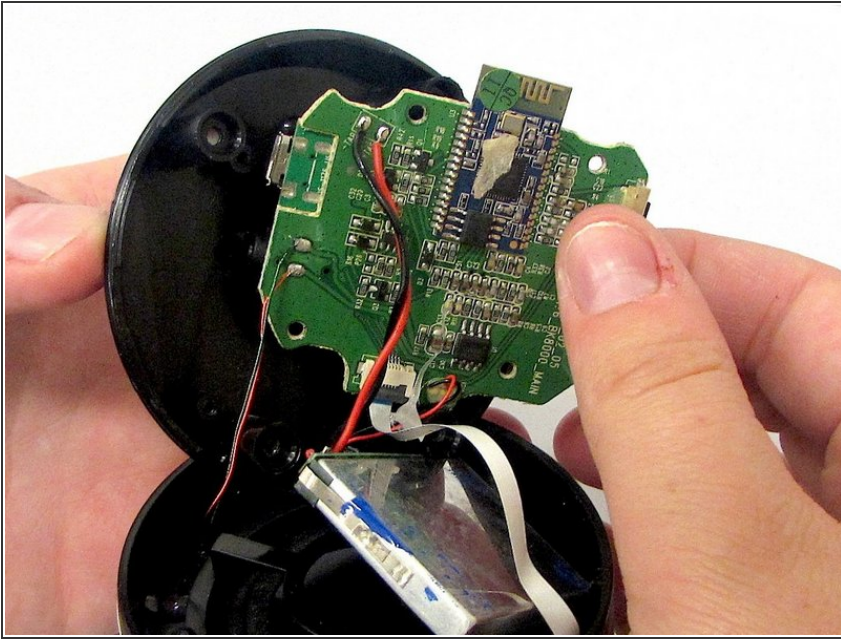
- Grip the base of the HMDX Chill and pull upwards.

Step 4 — Unscrew the Motherboard



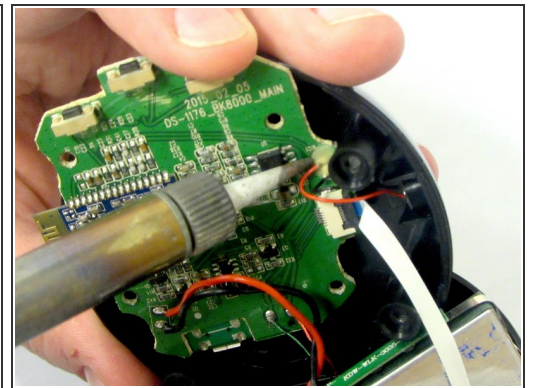
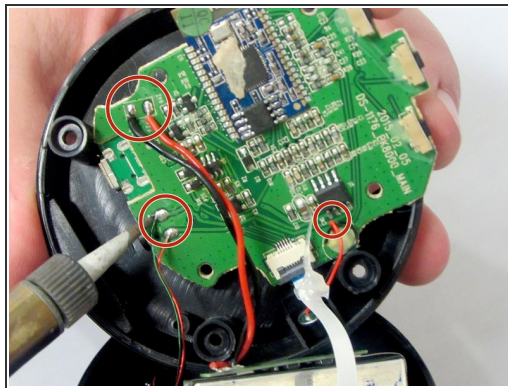
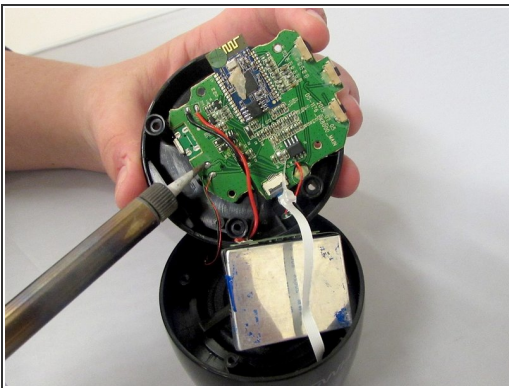
- Using a PH1 screwdriver, unscrew the four 0.5 inch screws securing the motherboard to the base of the device.

Step 5 — Remove the Motherboard from the Base



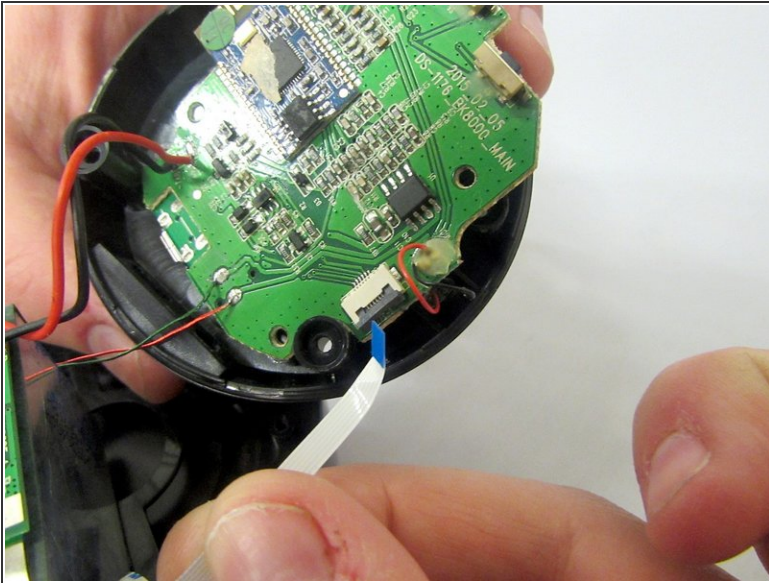
- Remove the motherboard from the device
- ⚠ Do not pull too hard as it is still attached to the base via wires.

Step 6 — Desolder Wires from the Motherboard



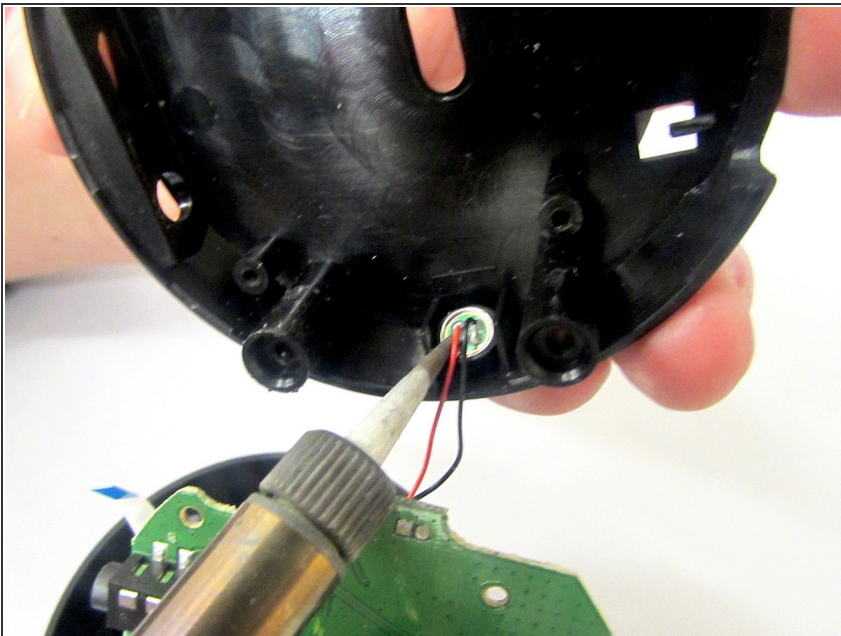
- Using a soldering iron to desolder the wires attaching the motherboard to the case.

Step 7 — Remove Connection Wire



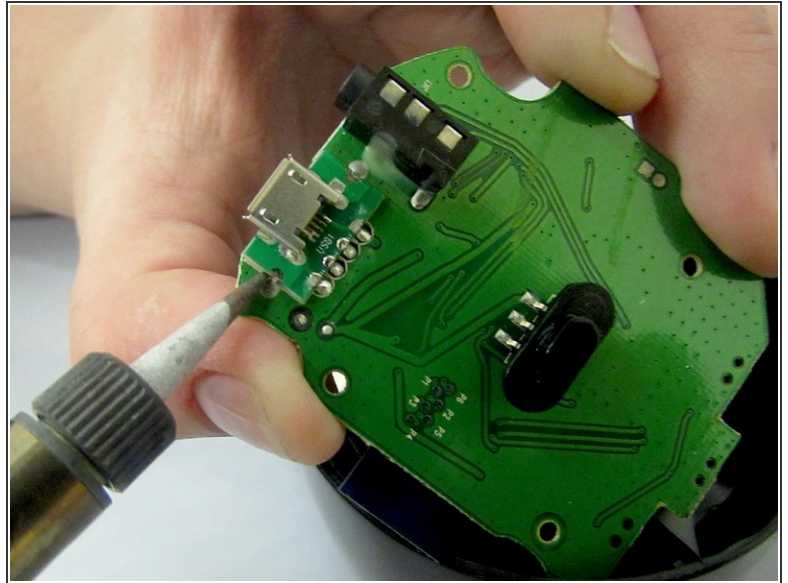
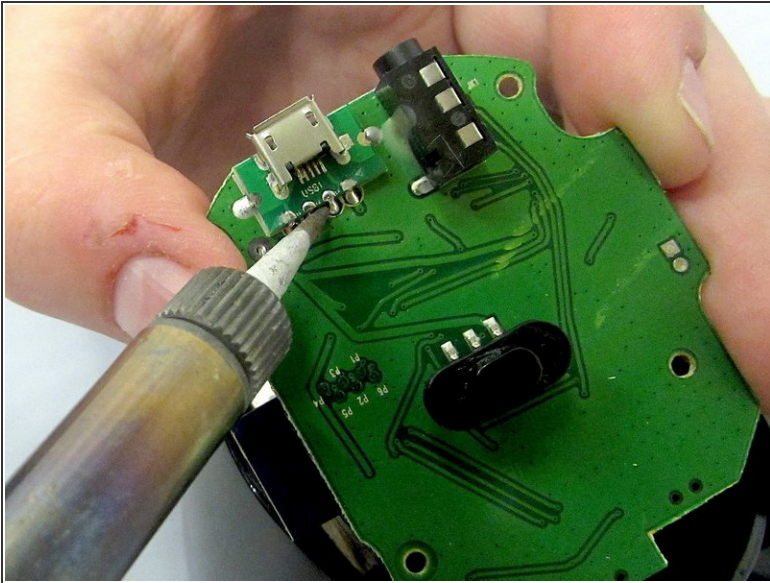
- Insert the spudger between the case and the wire and lever it upwards.
- This will cause the case to open.
- Pull the wire from behind the motherboard.

Step 8



- Using a soldering iron, desolder the connection from the motherboard to the base of the HMDX Chill.

Step 9 — Desolder the Charging Port



- Using a soldering tool desolder the charging port from the motherboard.

To reassemble your device, follow these instructions in reverse order.