



# HMDX Chill Disassembly

This guide will show how to disassemble the HMDX Chill Speaker.

Written By: Jourdan Holubasch



---

## INTRODUCTION

If your HMDX Chill is having any kind of issue this guide will show how to disassemble the device in order to begin the process of fixing your issues.

---



### TOOLS:

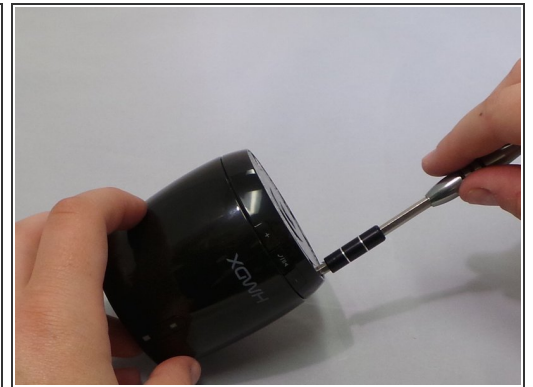
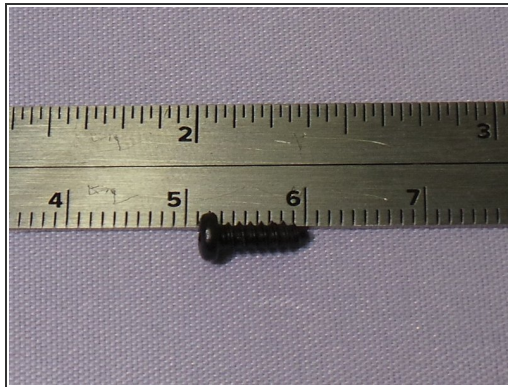
- [Phillips #1 Screwdriver](#) (1)
  - [Metal Spudger](#) (1)
-

## Step 1 — Remove Rubber Base



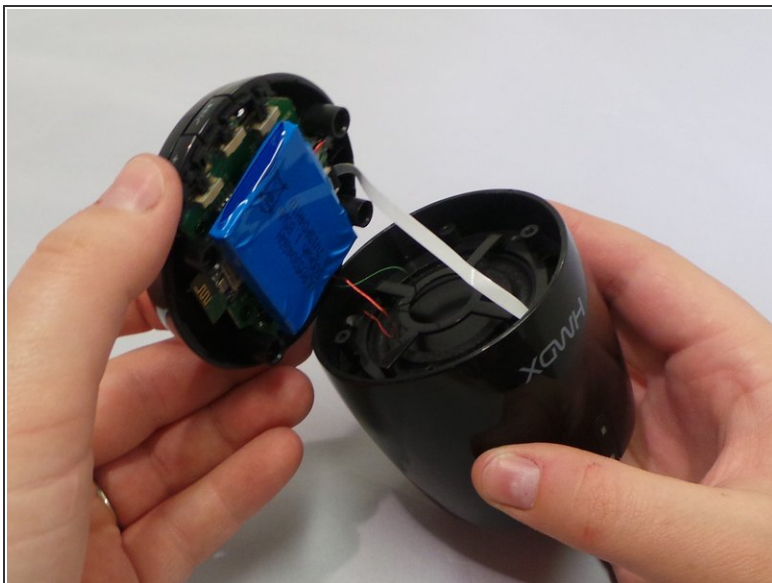
- Insert a metal spudger under the rubber base and pry the rubber base off.

## Step 2 — Unscrew the Four Bottom Screws



- Remove the four 0.9 inch Phillips screws from the base of the device.

### Step 3 — Remove the Base of the Speaker



- Grip the base of the HMDX Chill and pull upwards.

To reassemble your device, follow these instructions in reverse order.