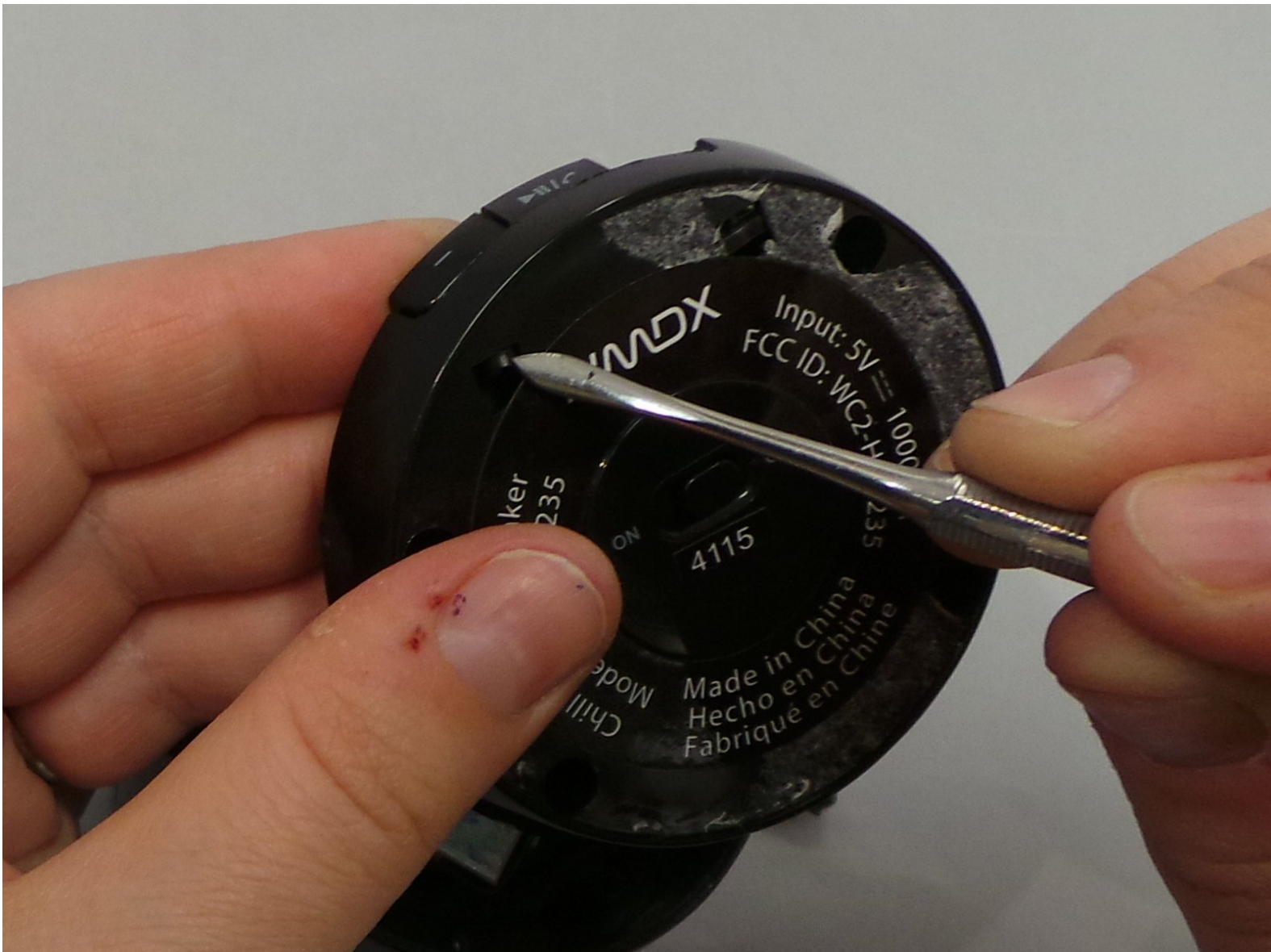




HMDX Chill Front Buttons Replacement

This guide will show how to replace the front buttons on the HMDX Chill.

Written By: Jourdan Holubasch



INTRODUCTION

If the buttons on the HMDX Chill no longer function properly the user will find how to disassemble and replace the buttons. This guide will walk through the steps of how to remove the buttons from the HMDX Chill without breaking them or order to allow for easy replacement with the new buttons.



TOOLS:

- [Metal Spudger](#) (1)
 - [Phillips #1 Screwdriver](#) (1)
 - [Probe and Pick Set](#) (1)
-

Step 1 — Remove Rubber Base



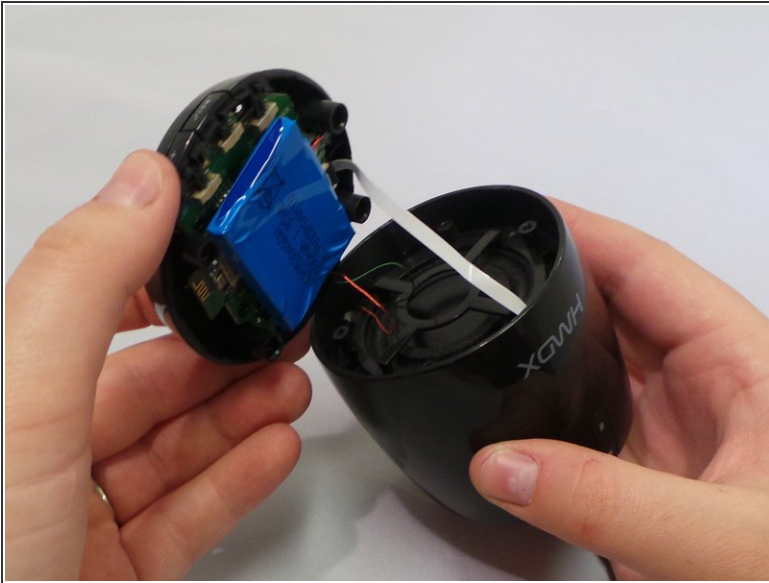
- Insert a metal spudger under the rubber base and pry the rubber base off.

Step 2 — Unscrew the Four Bottom Screws



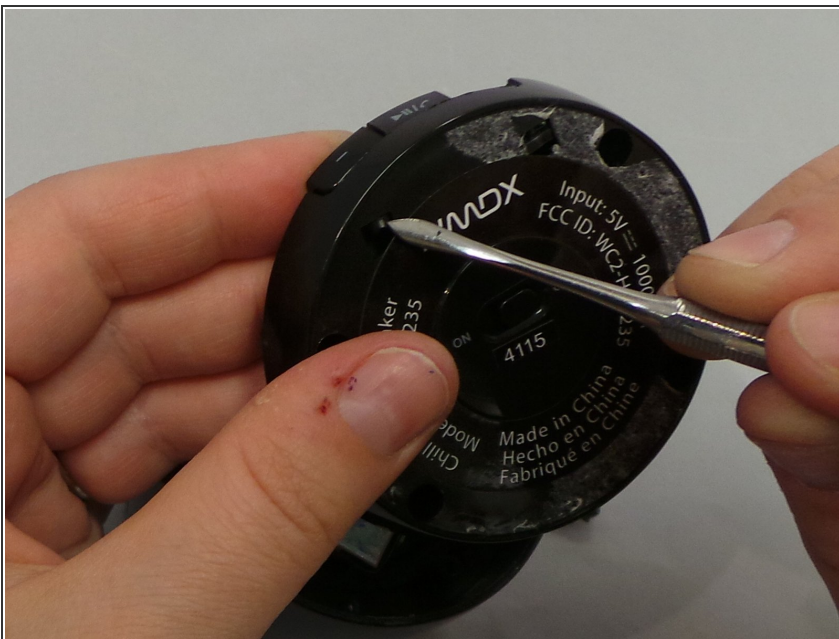
- Remove the four 0.9 inch Phillips screws from the base of the device.

Step 3 — Remove the Base of the Speaker



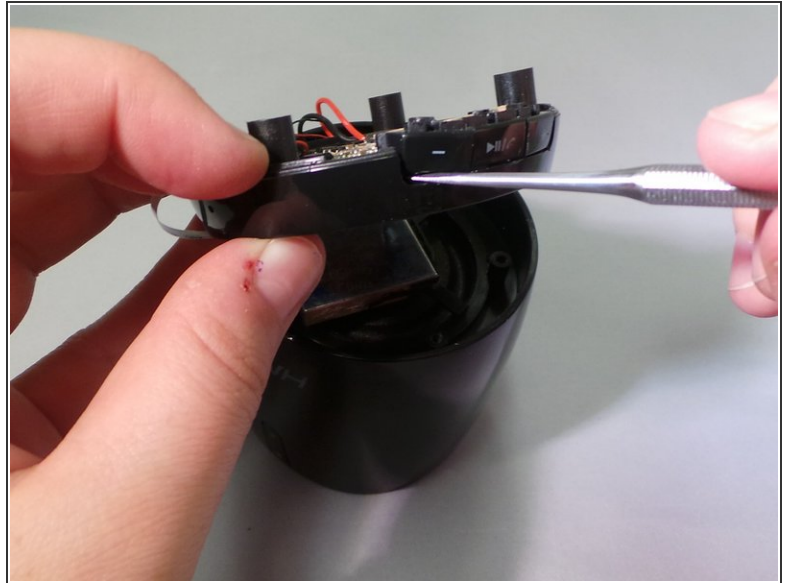
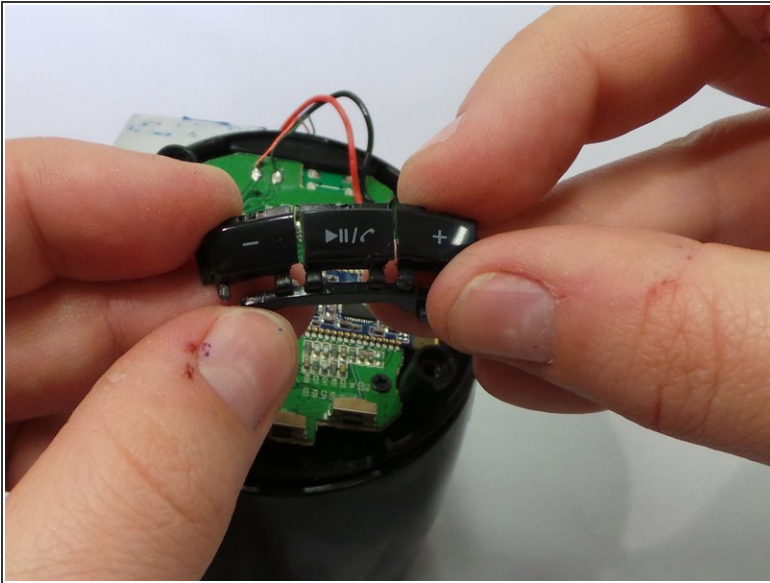
- Grip the base of the HMDX Chill and pull upwards.

Step 4 — Push the Button Base out of the Bottom



- Using a metal spudger push the small latch upwards towards the button from the bottom of the base.
- ⓘ These are located under where the rubber base was prior to removal.

Step 5 — Pry the Buttons off the Base of the Speaker



- Using a metal spudger insert the tool in the slit between the bottom of the buttons and the speaker base.
- Then using your metal spudger push the buttons upwards, away from the base, until they come loose.
- Then using your hand pull the linked buttons off the base.

To reassemble your device, follow these instructions in reverse order.