



HMDX Chill Motherboard Replacement

This guide will show how to replace the motherboard of the HMDX Chill.

Written By: Jourdan Holubasch



INTRODUCTION

When the HMDX Chill is not functioning and all other attempts at fixing the issue have been made, the issue will most likely be located in the motherboard. This guide will show how to locate and replace the motherboard of the HMDX Chill.



TOOLS:

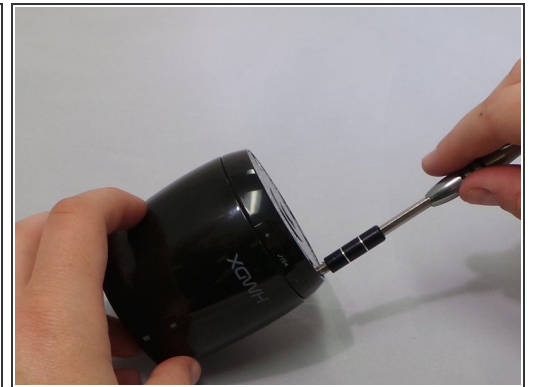
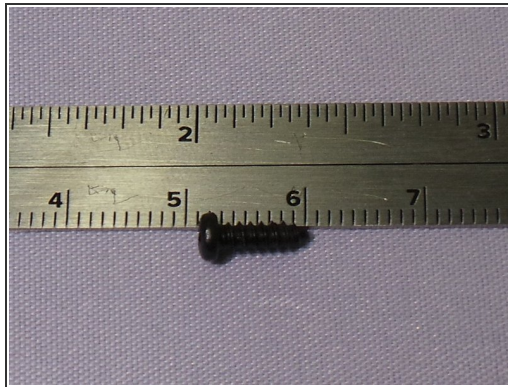
- [Metal Spudger](#) (1)
 - [Phillips #1 Screwdriver](#) (1)
 - [Soldering Iron](#) (1)
-

Step 1 — Remove Rubber Base



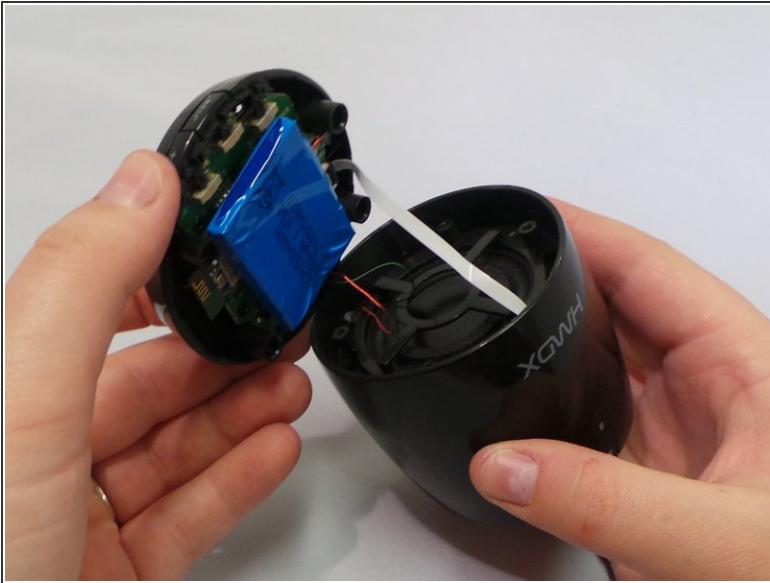
- Insert a metal spudger under the rubber base and pry the rubber base off.

Step 2 — Unscrew the Four Bottom Screws



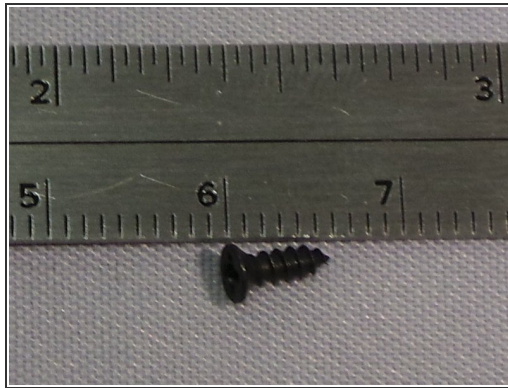
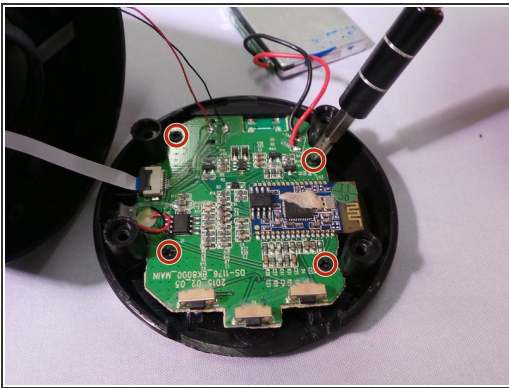
- Remove the four 0.9 inch Phillips screws from the base of the device.

Step 3 — Remove the Base of the Speaker



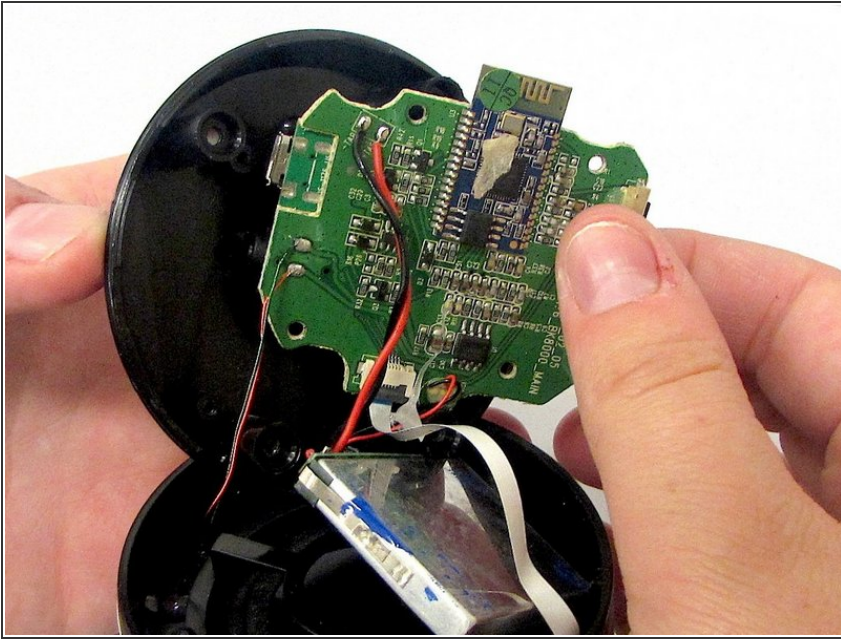
- Grip the base of the HMDX Chill and pull upwards.

Step 4 — Unscrew the Motherboard



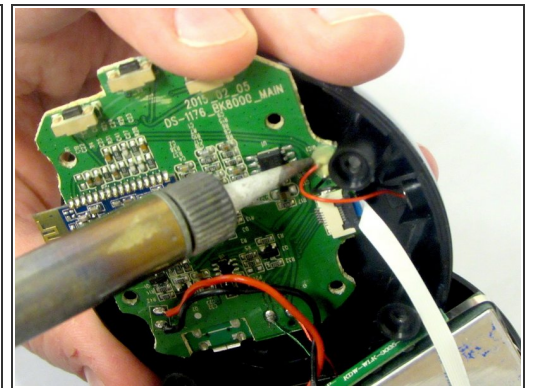
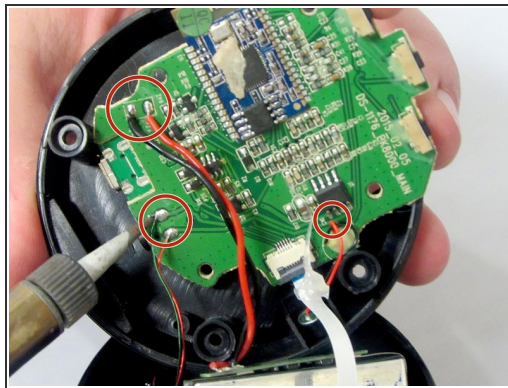
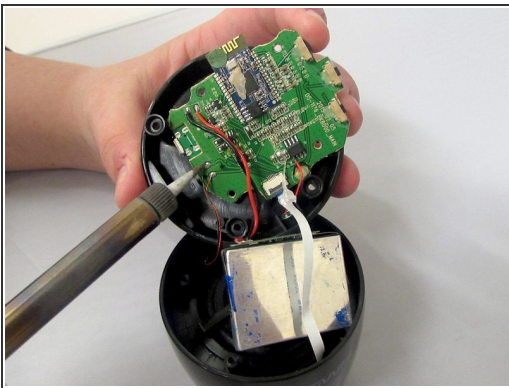
- Using a PH1 screwdriver, unscrew the four 0.5 inch screws securing the motherboard to the base of the device.

Step 5 — Remove the Motherboard from the Base



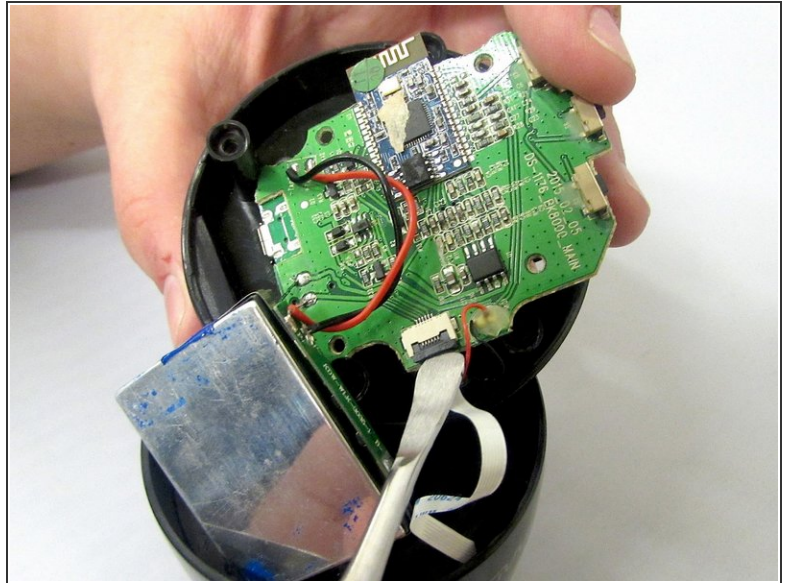
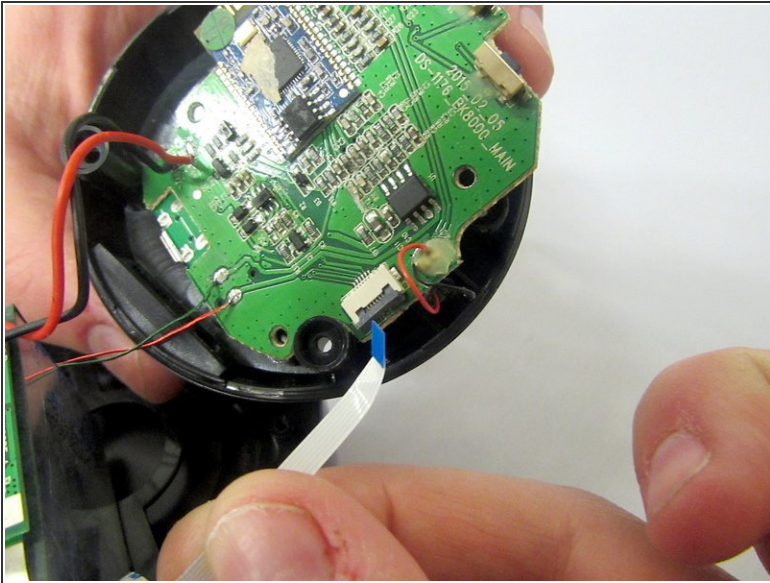
- Remove the motherboard from the device
- ⚠ Do not pull too hard as it is still attached to the base via wires.

Step 6 — Desolder Wires from the Motherboard



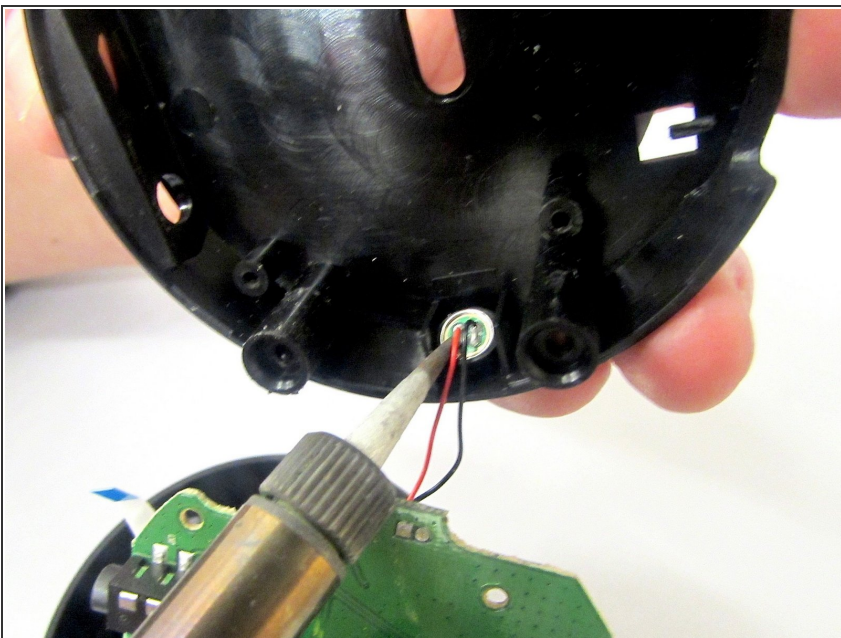
- Using a soldering iron to desolder the wires attaching the motherboard to the case.

Step 7 — Remove Connection Wire



- Insert the spudger between the case and the wire and lever it upwards.
 - This will cause the case to open.
- Pull the wire from behind the motherboard.

Step 8



- Using a soldering iron, desolder the connection from the motherboard to the base of the HMDX Chill.

To reassemble your device, follow these instructions in reverse order.