



# HMDX Chill Rubber Base Replacement

This guide will show how to replace the rubber base of the HMDX Chill.

Written By: Jourdan Holubasch



## INTRODUCTION

If there is broken piece of the HMDX Chill rubber base this can result in the speaker not standing properly and thus distorting the sound. This guide will show how to locate and replace the rubber base in order to assure the best sound quality possible from the HMDX Chill.



### TOOLS:

- [Metal Spudger](#) (1)
  - [Phillips #1 Screwdriver](#) (1)
-

## Step 1 — Remove Rubber Base



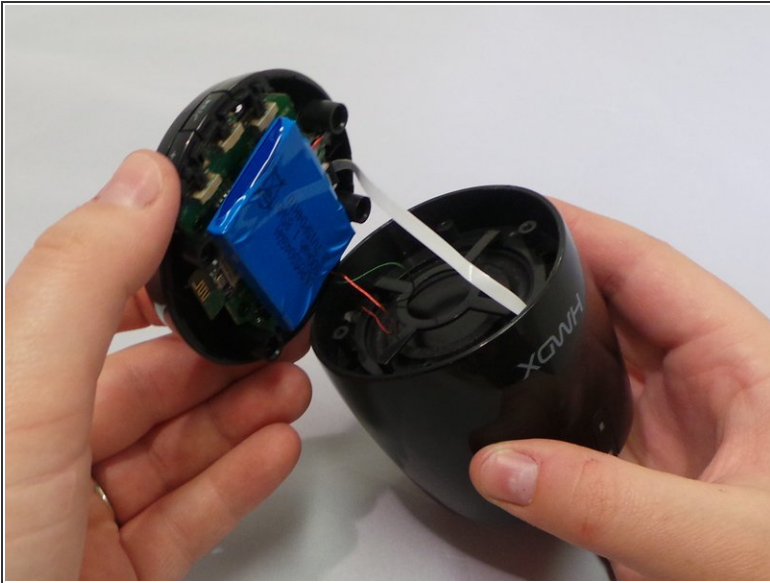
- Insert a metal spudger under the rubber base and pry the rubber base off.

## Step 2 — Unscrew the Four Bottom Screws



- Remove the four 0.9 inch Phillips screws from the base of the device.

### Step 3 — Remove the Base of the Speaker



- Grip the base of the HMDX Chill and pull upwards.

To reassemble your device, follow these instructions in reverse order.