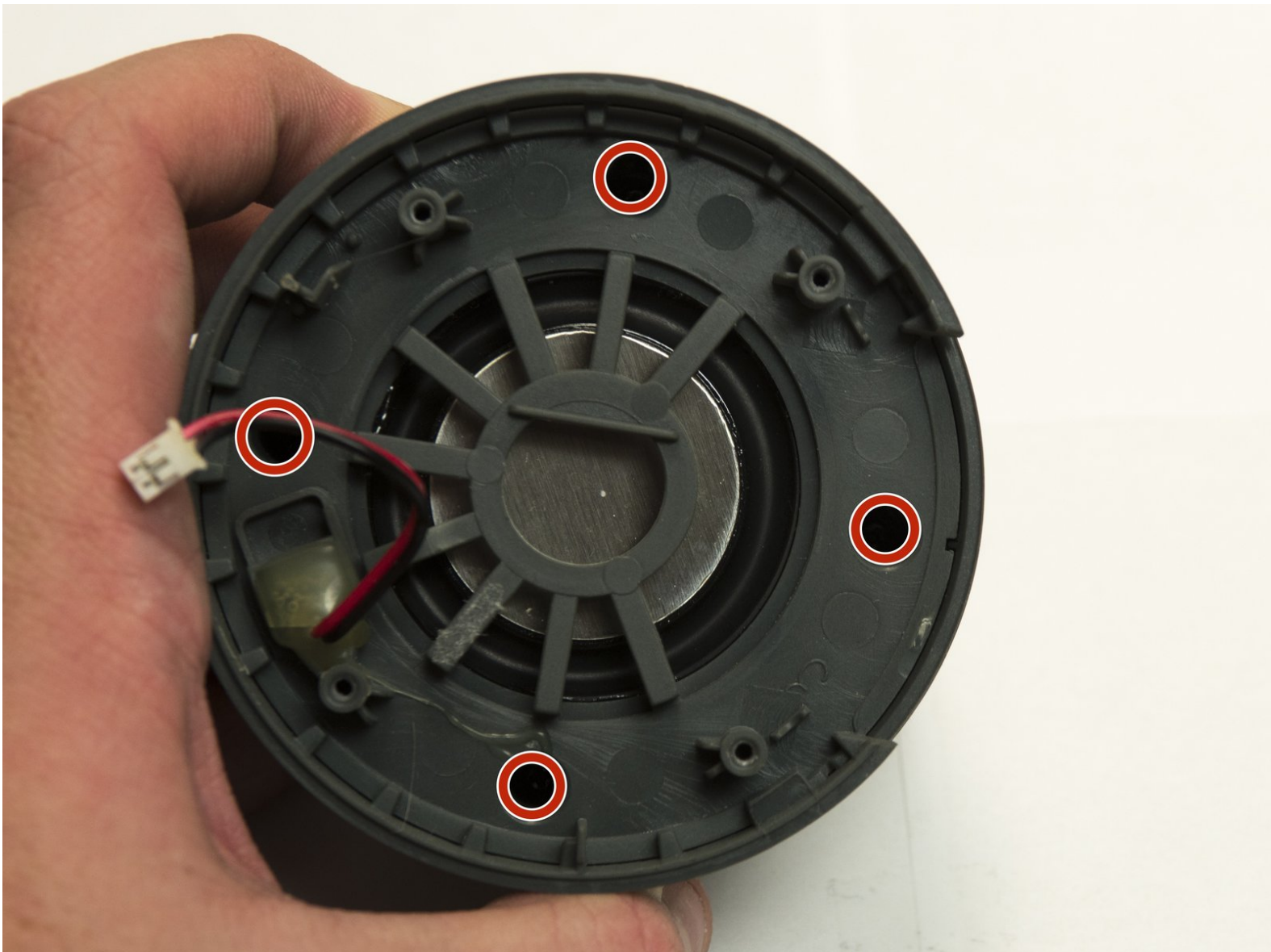




# HMDX Jam Plus Speaker Replacement

Accomplished through this guide is the replacement of a bad speaker in the HMDX Jam Plus.

Written By: Maxwell Erickson



# INTRODUCTION

Sometimes speakers don't last as long as we need them too. This guide is to show the process of replacing a bad speaker in the HMDX Jam Plus. The replacement requires no special skills and is straightforward.



## TOOLS:

- [Phillips #1 Screwdriver](#) (1)
  - [iFixit Opening Tools](#) (1)
-

## Step 1 — Battery



- Flip the device over so the bottom is facing up.
- Use the large plastic opening tool to gently pry the rubber base from the device.
- Slowly move the plastic opening tool around the edge of the rubber base to separate it from the plastic.

## Step 2



- Use a Phillips #1 screwdriver to remove the four black 9mm screws from the device.

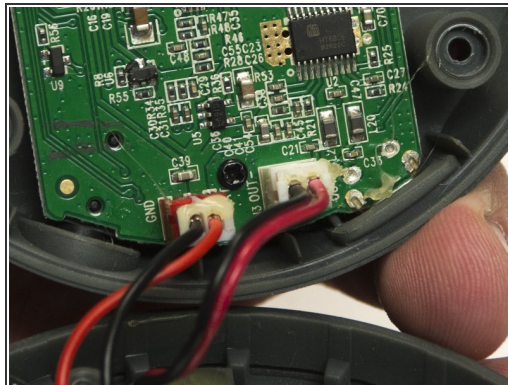
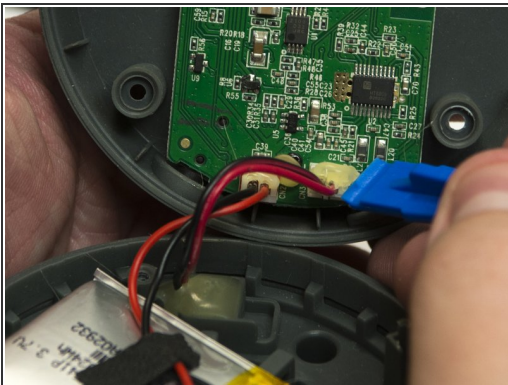


### Step 3



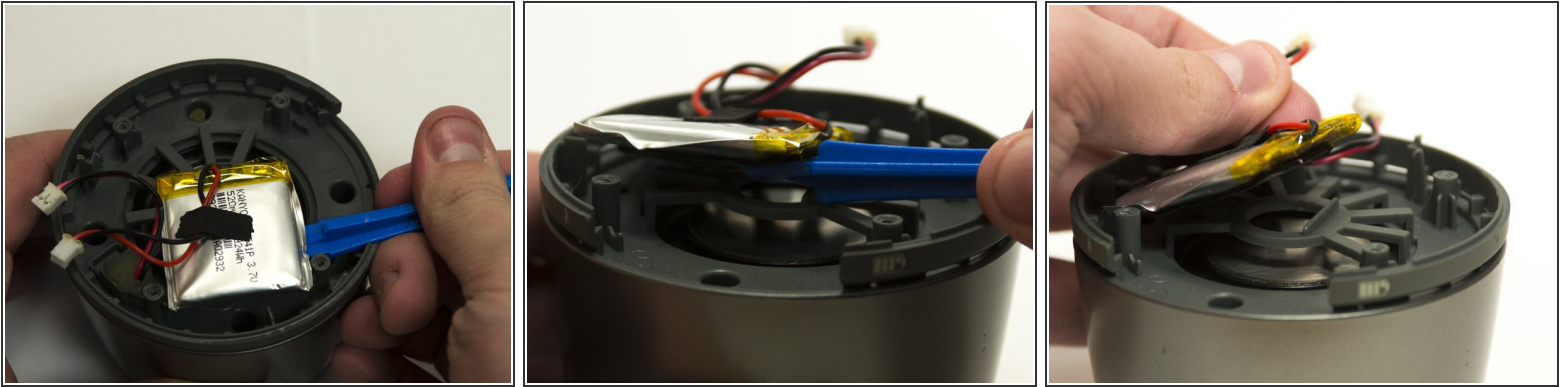
- Gently separate the base from the rest of the device to reveal the battery and the main board.


### Step 4



- Carefully use the plastic opening tool to remove the glue around the battery and speaker connectors.
- Pull gently on the connectors to separate each one from the main board.
- ✦ The battery is connected to board in the red socket and the speaker is connected in the white socket.

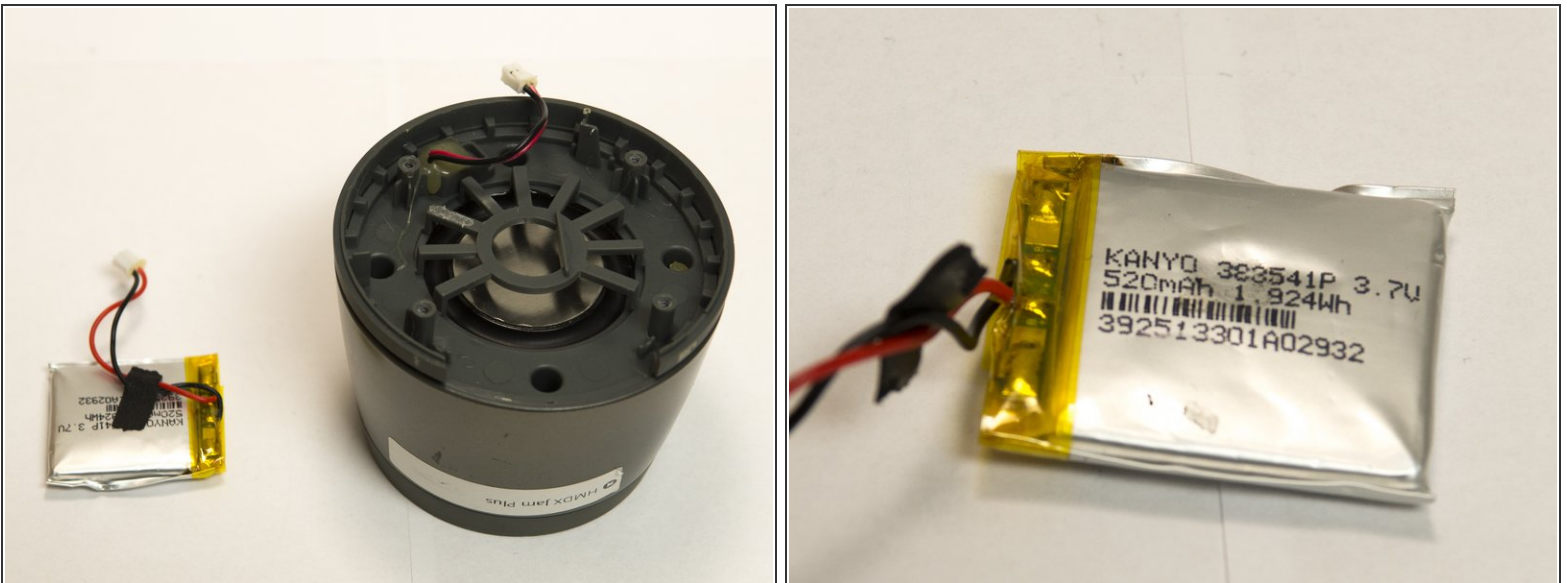
## Step 5



 Batteries can be very dangerous if punctured. Use extra caution when using tools around the battery.

- Use the plastic opening tool to gently pry the battery free from the rest of the device.

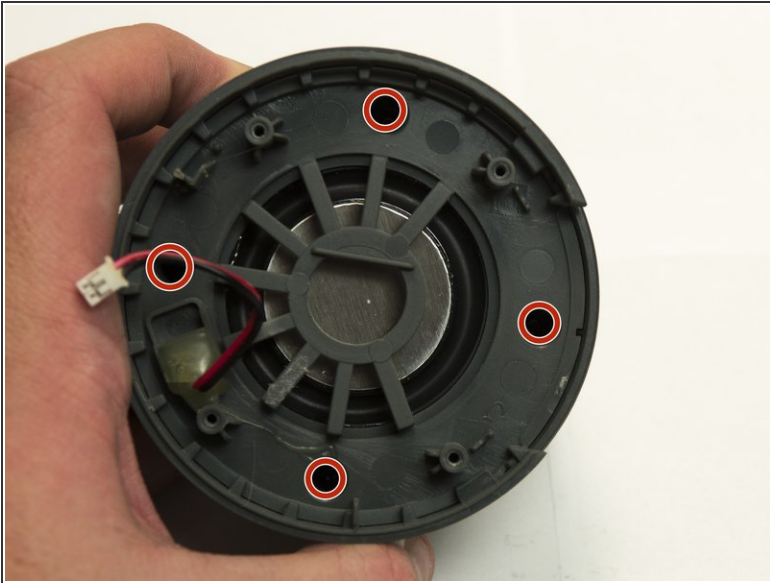
## Step 6



-  Use new adhesive to secure battery back to the rest of the device.

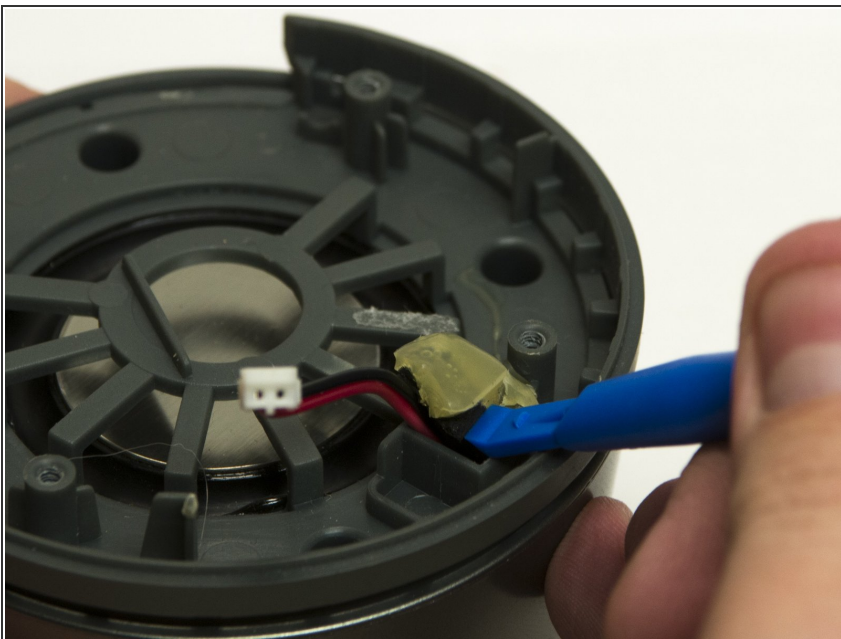


## Step 7 — Speaker



- Use a Phillips #1 screwdriver to remove the four black 9mm screws from device.

## Step 8



- Use the plastic opening tool to pry the glue away from the wire. Be careful not to damage the wire.

## Step 9



- Use the plastic opening tool to separate the center plastic piece from the rest of the device.
- Gently lift the center plastic piece and feed the speaker wire through the hole.

## Step 10



- Use the plastic opening tool to separate the speaker grate from the rest of the device.

## Step 11



- Carefully remove the speaker through the top of the device.
- ☑ Apply new adhesive to the edge of the replacement speaker and the edge of the speaker grate to ensure they do not wiggle loose.

To reassemble your device, follow these instructions in reverse order.