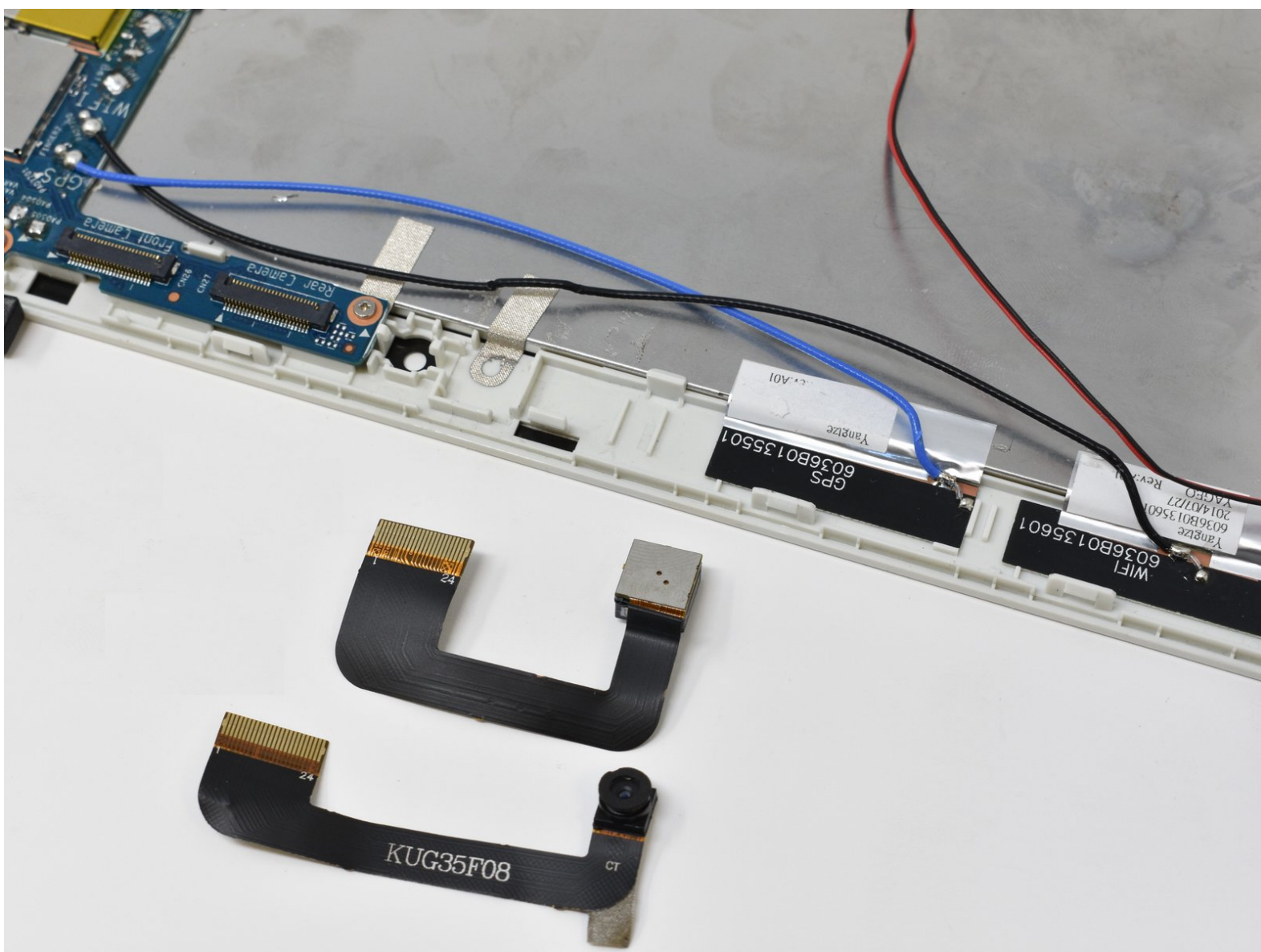




HP 10 2101 Camera Replacement

Follow this guide to replace HP 10 2101 J6F00UA camera. The rear-facing camera spare part # is 782649-001, front-facing camera part # is 782648-001.

Written By: Bryce Harmsen



INTRODUCTION

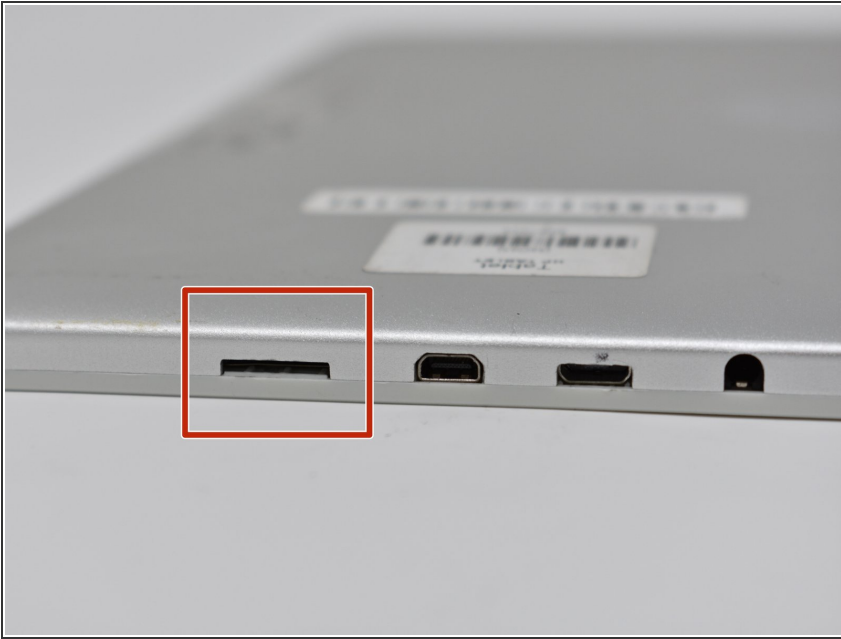
The cameras are directly attached to the motherboard through web cam cables. In order to access those cables to remove the cameras, the battery must be removed first. This guide also requires unsoldering the battery connections from the motherboard.



TOOLS:

- [Soldering Iron](#) (1)
 - [iFixit Opening Tools](#) (1)
 - [Spudger](#) (1)
-

Step 1 — Back Panel



- Identify the SD card port.

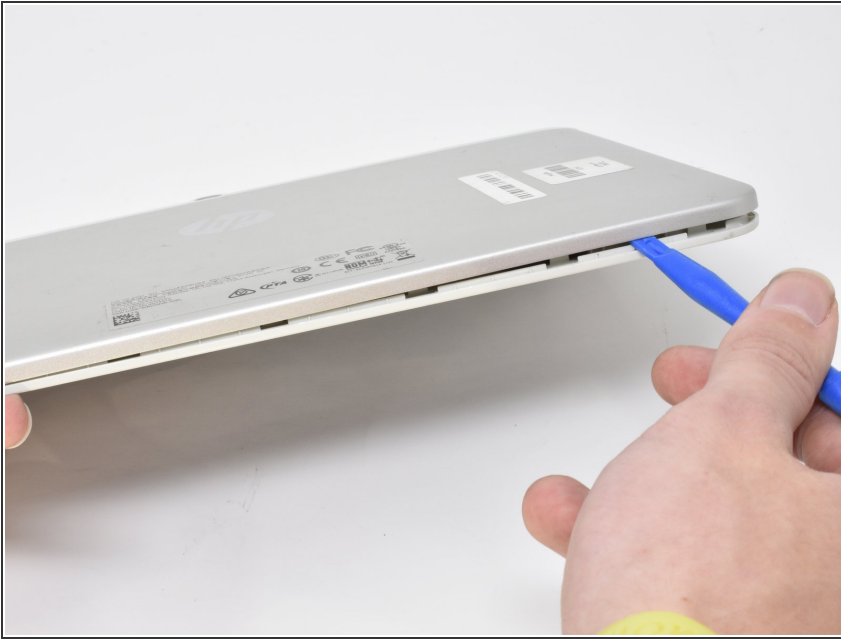
Step 2



- Insert the smallest plastic opening tool into the SD card port. Gently pry until the back panel separates from the screen panel.

⚠ Do not insert opening tool too far.
Avoid making contact with the metal inside the port.

Step 3



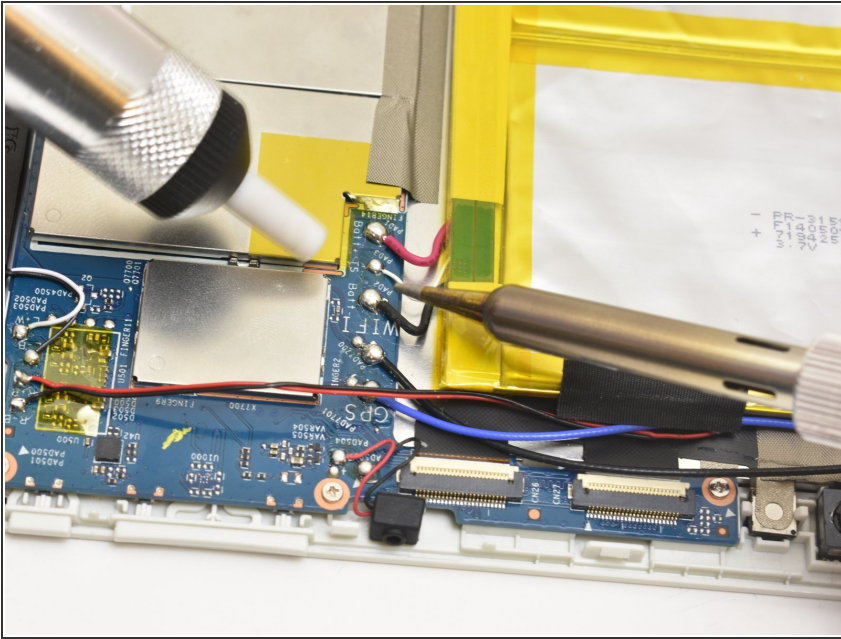
- Slide the opening tool along the seam between the back panel and the screen panel, prying the panels apart as you move around the edges.

Step 4



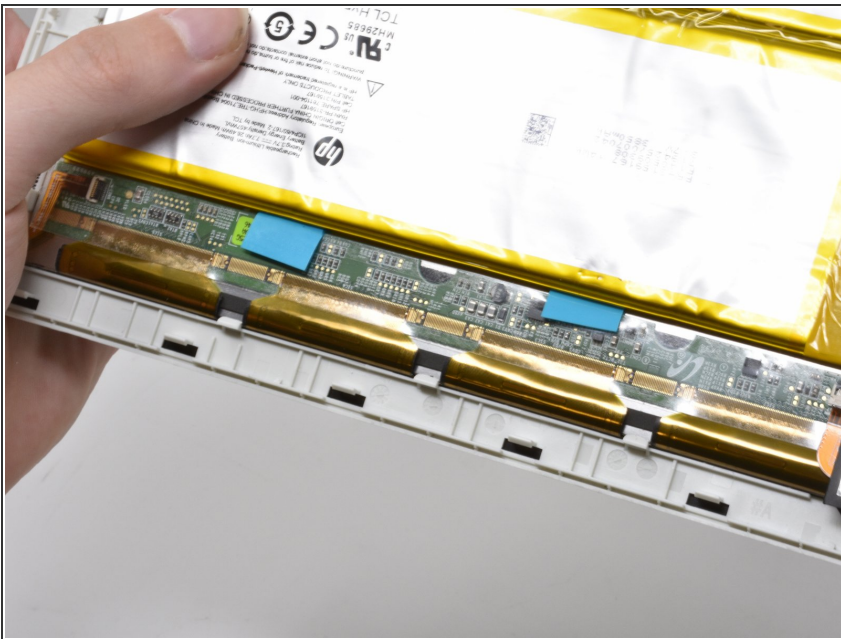
- Separate the back panel from the rest of the device.

Step 5 — Battery



- Desolder the battery connectors from the motherboard.

Step 6



- Pull the bright blue-green tabs to remove the battery from the rest of the device.
- ⓘ Pulling the tabs may not fully disconnect the battery from the metal display casing.

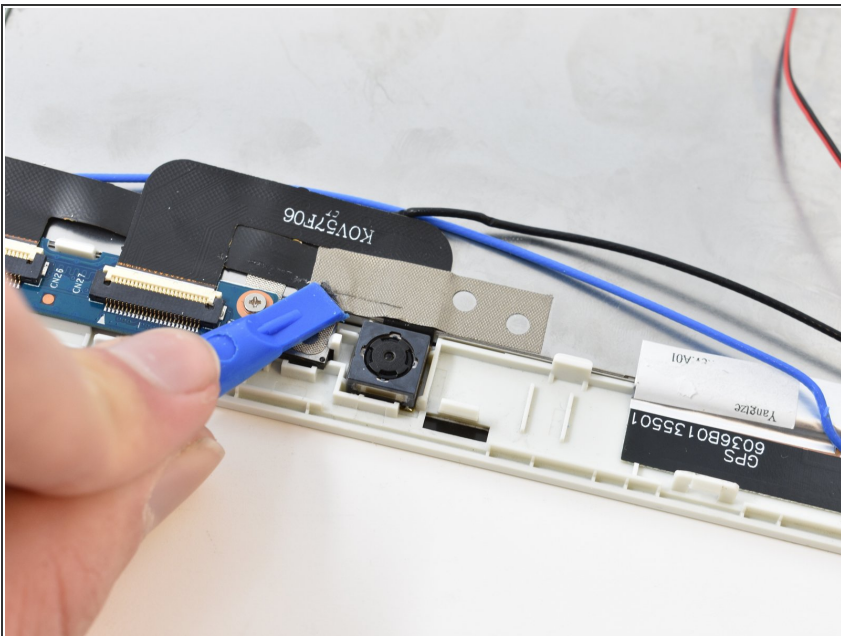
Step 7



- If the previous step is unsuccessful, wedge the smallest plastic opening tool between the adhesive and the metal display casing.

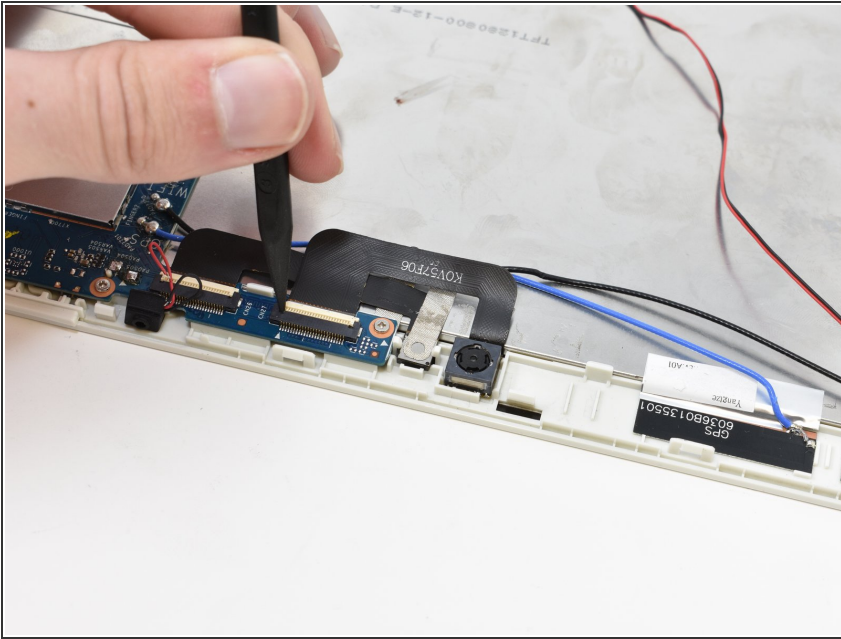
 **Wedging may apply unsafe pressure on the battery.** Be careful not to puncture the battery.

Step 8 — Camera



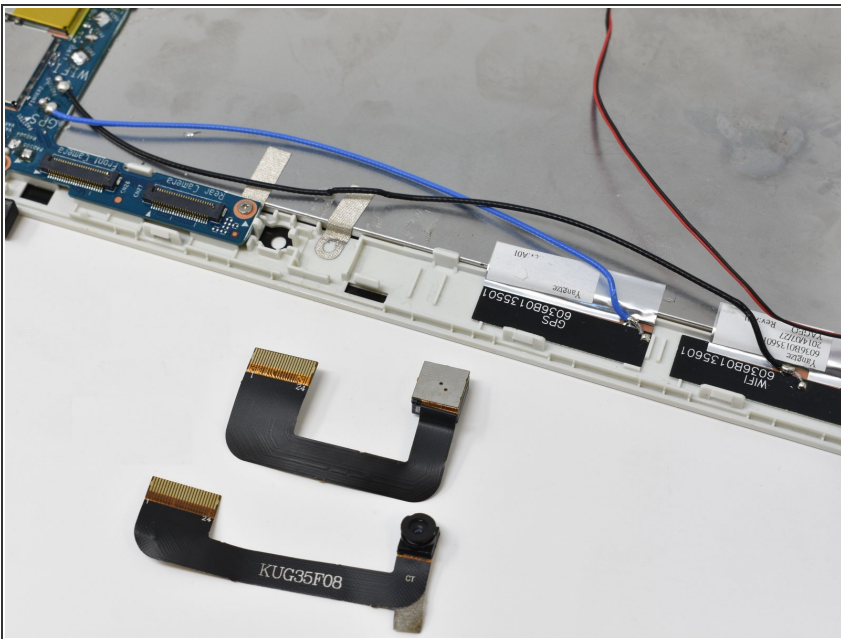
- Peel off the metal mesh tape with the plastic opening tool.

Step 9



- Disconnect the **zero insertion force (ZIF)** cable. Use the tip of the spudger or your fingernail to flip up the small white locking flap. Then, you can safely pull the cable out.
 - Repeat this process for the second connection port.
- ⚠ Be sure to pry up on the hinged flap, not the connector socket.

Step 10



- Remove the front and back camera.

To reassemble your device, follow these instructions in reverse order.