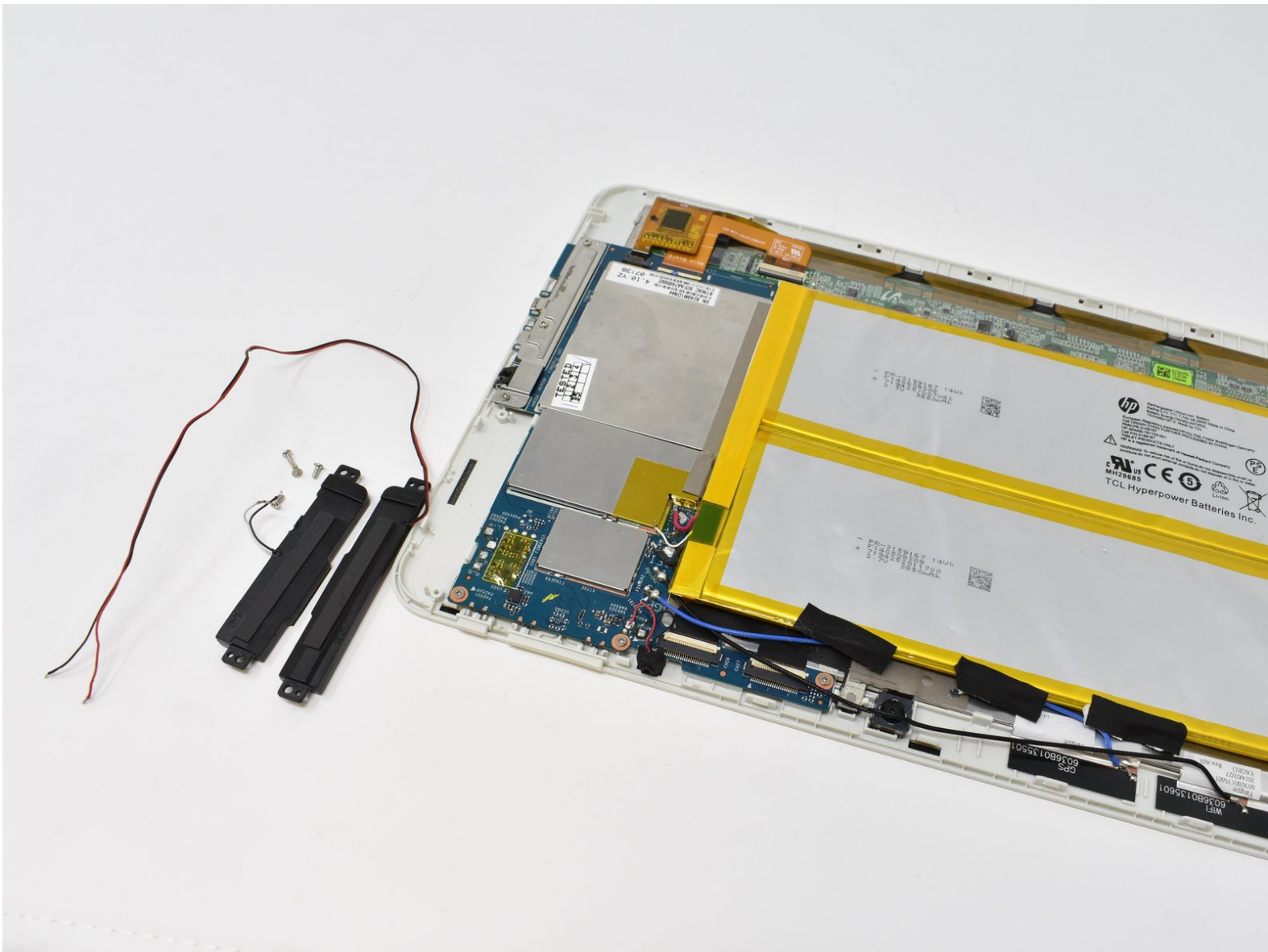




HP 10 2101 Speaker Replacement

Follow this guide to replace the HP 10 2101 J6F00UA speakers. The replacement of your speakers could improve sound quality. Replacement Parts: 784328-001

Written By: Bryce Harmsen



INTRODUCTION

The speakers are attached to the device on the left and right edges. In this guide, you will unscrew and desolder the speakers to disconnect them from the motherboard and the device. This guide requires soldering, please be careful and ventilate the room.



TOOLS:

- [iFixit Opening Tools](#) (1)
 - [Phillips #00 Screwdriver](#) (1)
 - [Soldering Iron](#) (1)
-

Step 1 — Back Panel



- Identify the SD card port.

Step 2



- Insert the smallest plastic opening tool into the SD card port. Gently pry until the back panel separates from the screen panel.

⚠ Do not insert opening tool too far.
Avoid making contact with the metal inside the port.

Step 3



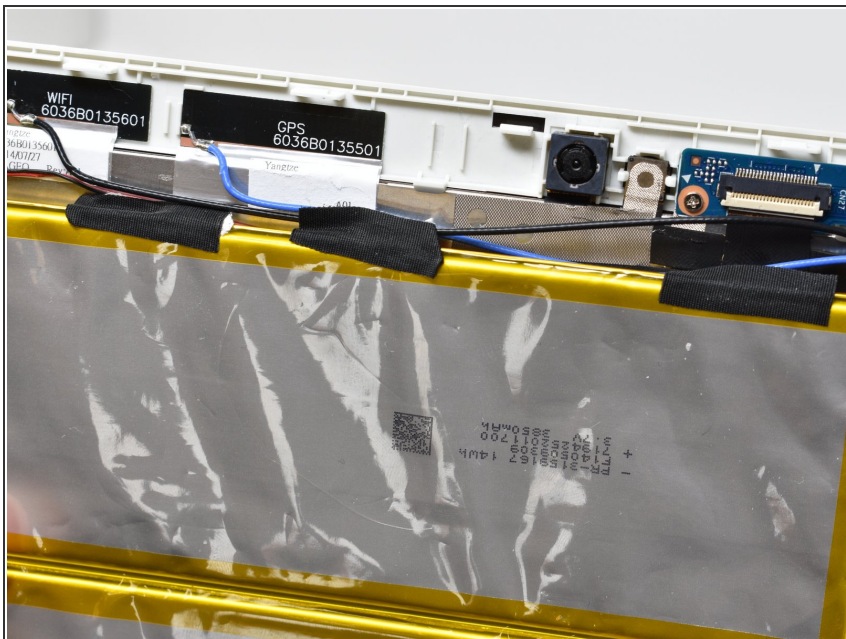
- Slide the opening tool along the seam between the back panel and the screen panel, prying the panels apart as you move around the edges.

Step 4



- Separate the back panel from the rest of the device.

Step 5 — Speakers



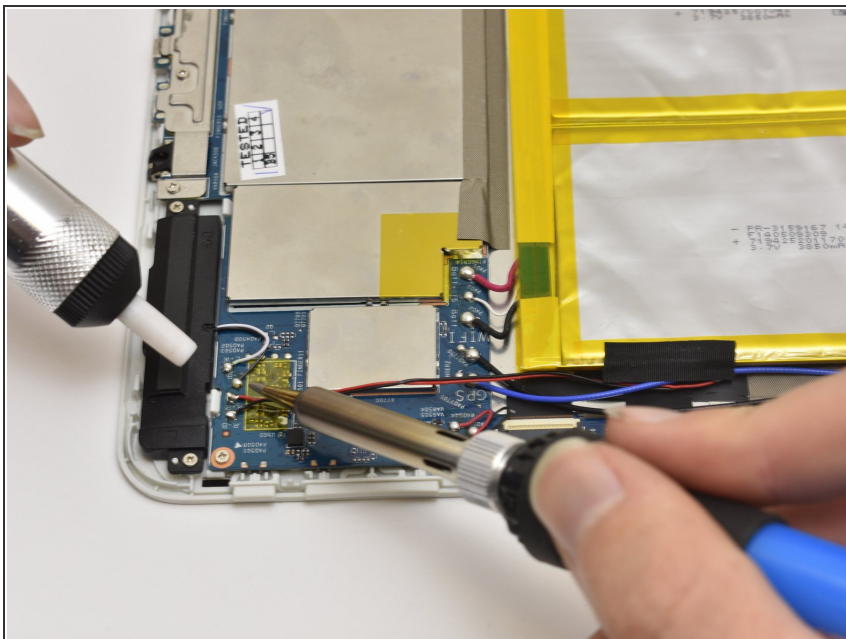
- Remove the pieces of black tape that hold the speaker wires to the battery.

Step 6



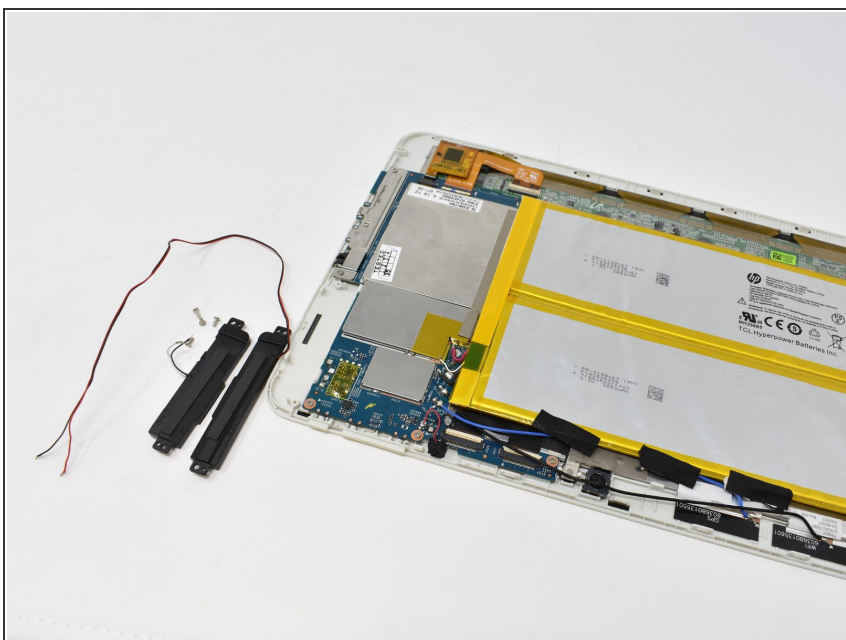
- Use the Phillips #00 screwdriver to remove the 4mm screws from the speaker.
- There are two screws holding both speakers to the plastic device frame.

Step 7



- Desolder the speaker wires from the motherboard.

Step 8



- Separate the speakers from the device.

To reassemble your device, follow these instructions in reverse order.