



HP 15-AF131DX Wireless Network Card Replacement

This guide will teach you how to replace your HP Wireless Network Card in your HP 15-AF131DX Notebook.

Written By: Clayton Mettert



INTRODUCTION

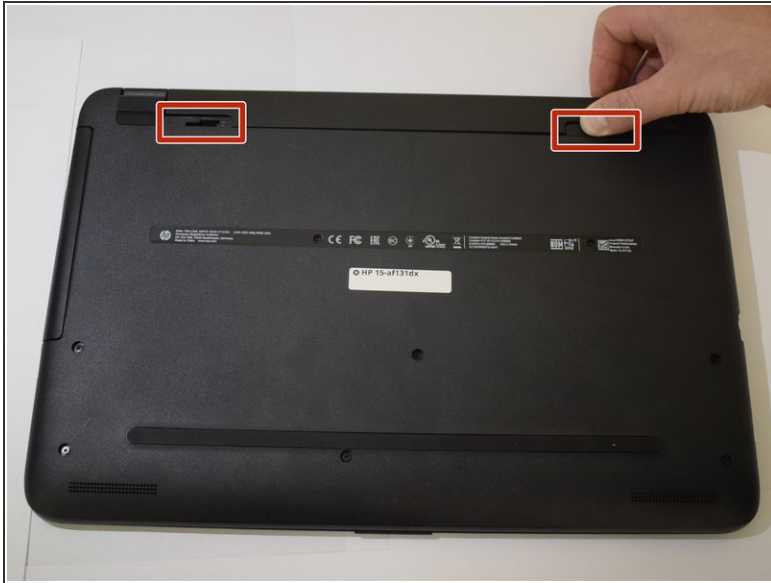
Before starting the steps outlined in this guide please have the battery and the CD/DVD optical drive removed.



TOOLS:

- [Paper Clip](#) (1)
 - [Phillips #0 Screwdriver](#) (1)
 - [iFixit Opening Tools](#) (1)
-

Step 1 — Battery



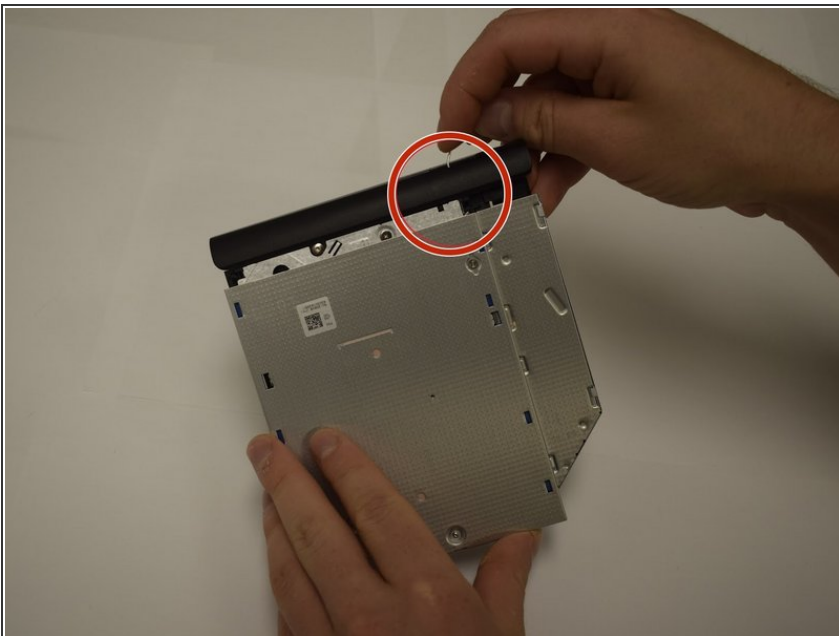
- Turn the computer upside down on a level surface.
 - *Slide the battery lock* to unlock the battery.
 - *Slide the battery release latch*. The latch will click when the battery is released.
 - *Lift the battery* from the middle to remove it from the computer.
- ☑ The latch will click again when a battery is reinstalled. Switch the battery lock back to locked after reinstalling a battery to keep it secure.

Step 2 — Optical Drive



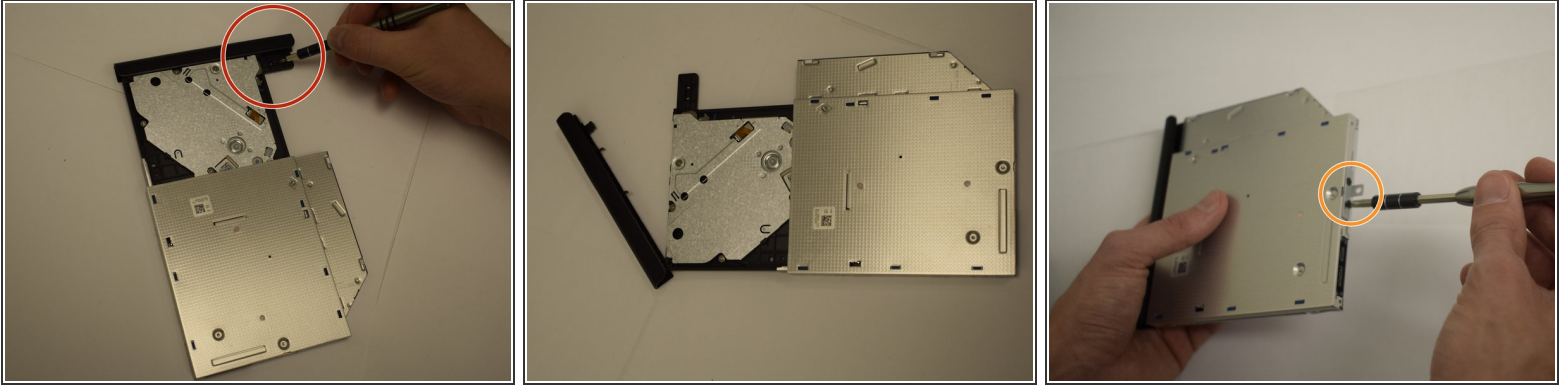
- Using a small Phillips screwdriver, *remove the Phillips screw* in the middle of the bottom of the computer.
- *Pull the CD/DVD drive outward* to slide it away from the computer.

Step 3



- To open the drive use an unbent paperclip and *press it into the small hole until the disc tray releases*.
- Pull the disc tray out from the front until it is as far as it will go out of the optical drive.

Step 4



- To remove excess parts from the optical drive *press down on the plastic tab* behind the tray's bezel.
- Gently pry the **bezel** from the face of the optical drive.
- With a smaller Phillips head screwdriver, *remove the screws on the back of the drive*, then remove the small metal bracket.

Step 5 — Wireless Network Card



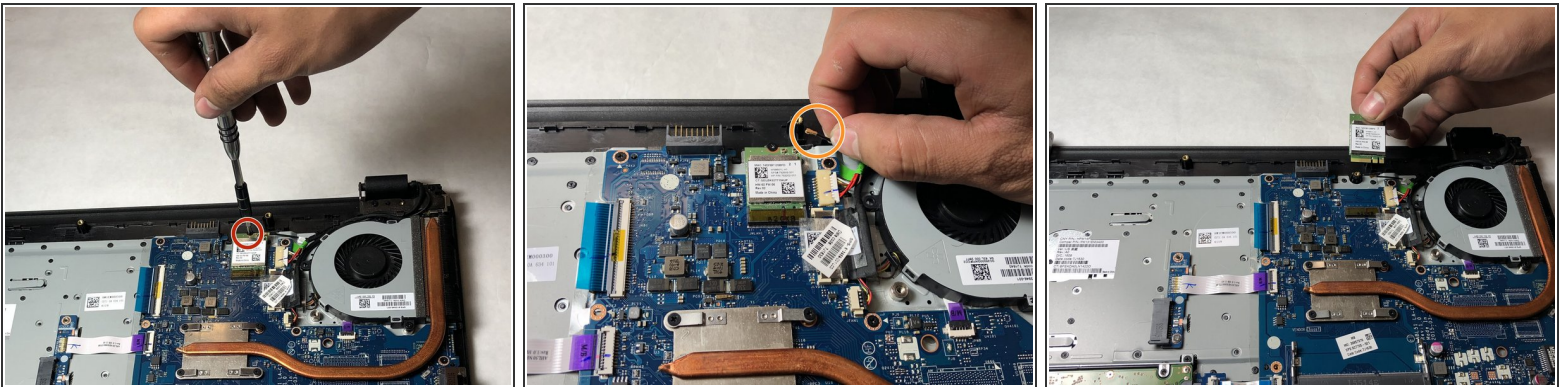
- The first step of this process is to peel off two rubber feet from the bottom of the laptop.
- Then remove twelve 8.8 mm screws using the Phillips #0 Screwdriver.

Step 6



- Remove the bottom of the plastic case using a blue plastic opening tool.
- The HP Wireless Network Card is found in Picture 3, circled in red.

Step 7



- Remove one 3.3 mm screw using Phillips #0 screwdriver.
- Pop off the connection wire by pulling the wire upwards off the stud on the HP Wireless Network Card.
- Pull out the HP Wireless Network Card.

To reassemble your device, follow these instructions in reverse order.