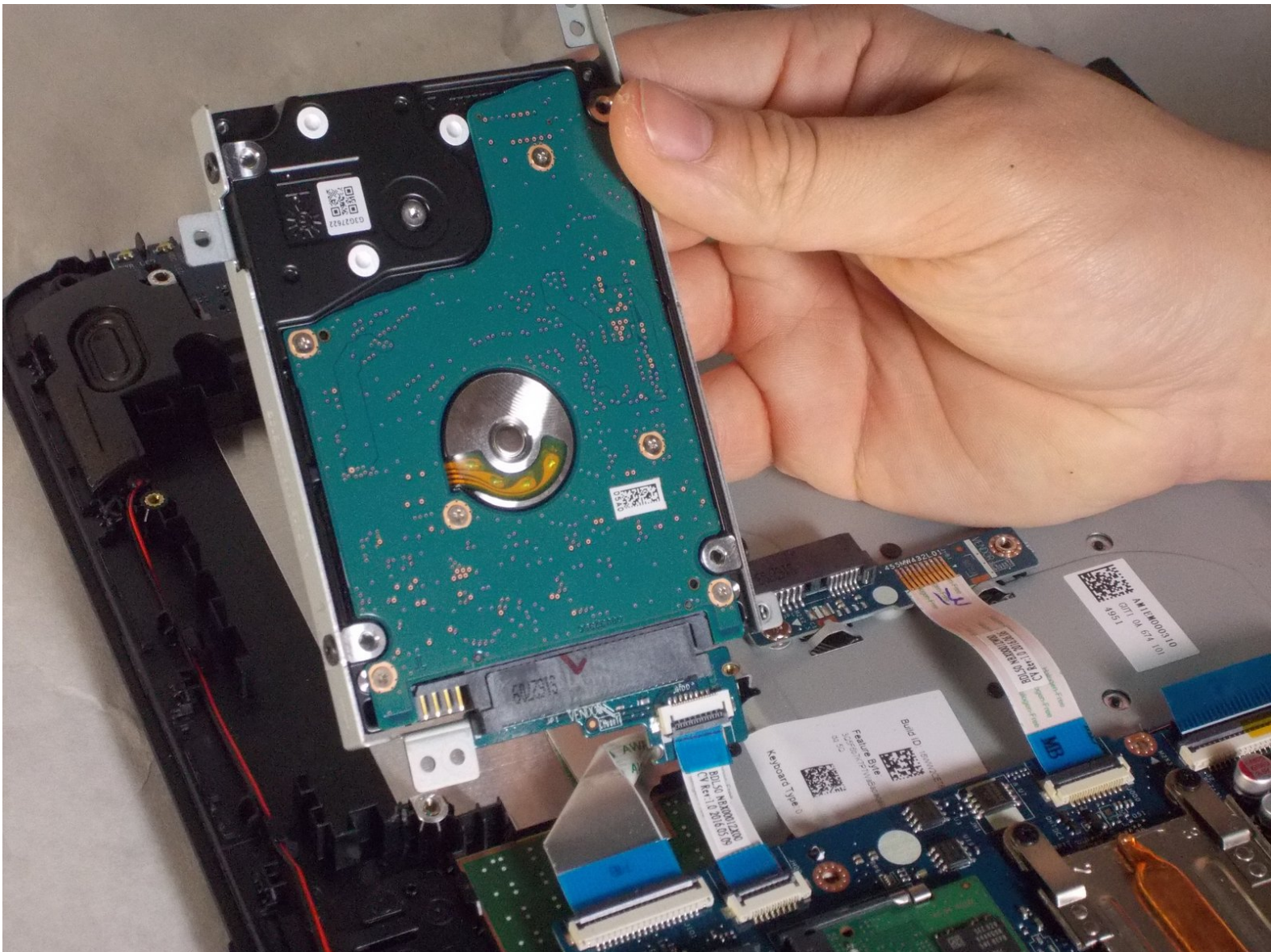




# HP 15-BA078DX Hard Drive Replacement

This guide will detail the process of removing the Hard Disk Drive (HDD) from the laptop.

Written By: Benjamin DosSantos Jr



# INTRODUCTION

This guide will detail the process of removing the Hard Disk Drive (HDD) from the laptop.



## TOOLS:

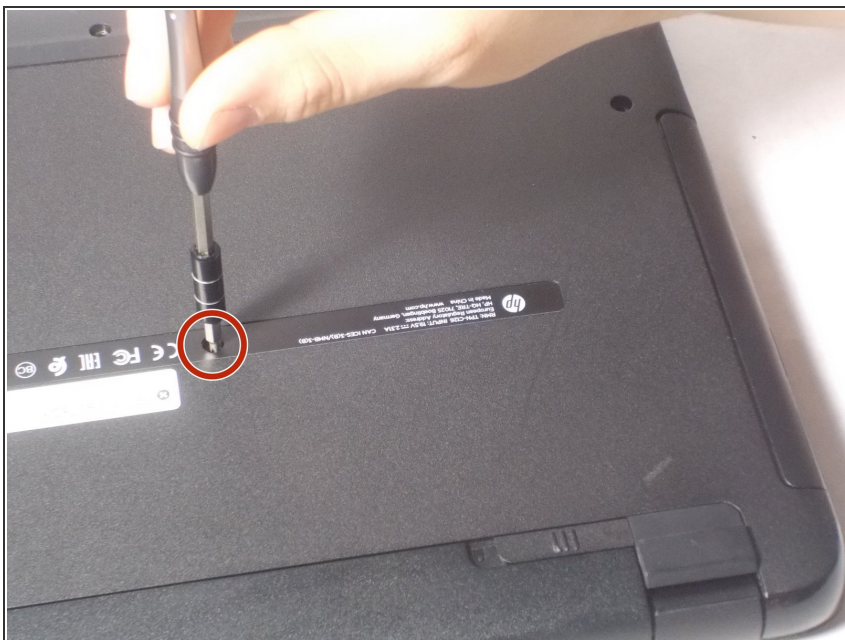
- [Spudger](#) (1)
  - [Phillips #0 Screwdriver](#) (1)
  - [iFixit Opening Tools](#) (1)
-

## Step 1 — Battery



- Unclip the two latches on the bottom of the laptop.
- Slide the battery straight out while holding the clip open.

## Step 2 — Disc Drive



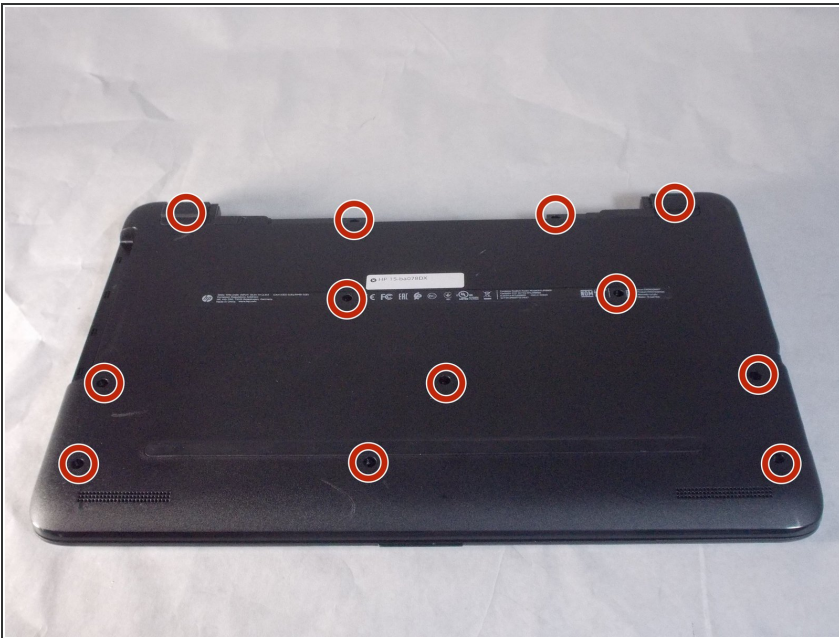
- Using the Phillips #0 screwdriver, remove the 7.5mm screw from the underside of the plastic frame that holds the disc tray in place.

## Step 3



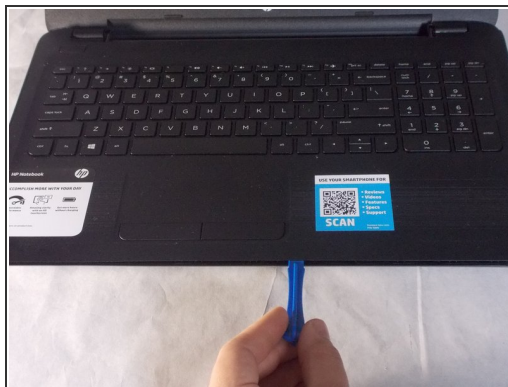
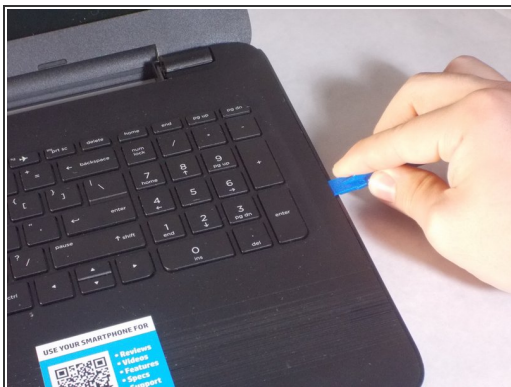
- Remove the disk tray assembly by sliding it out from the side using the blue plastic opening tool.

## Step 4 — Back Panel



- Remove all of the remaining back panel screws with a #0 Phillips head screwdriver.
- ⓘ Remember to remove the two screws under the rubber feet.

## Step 5



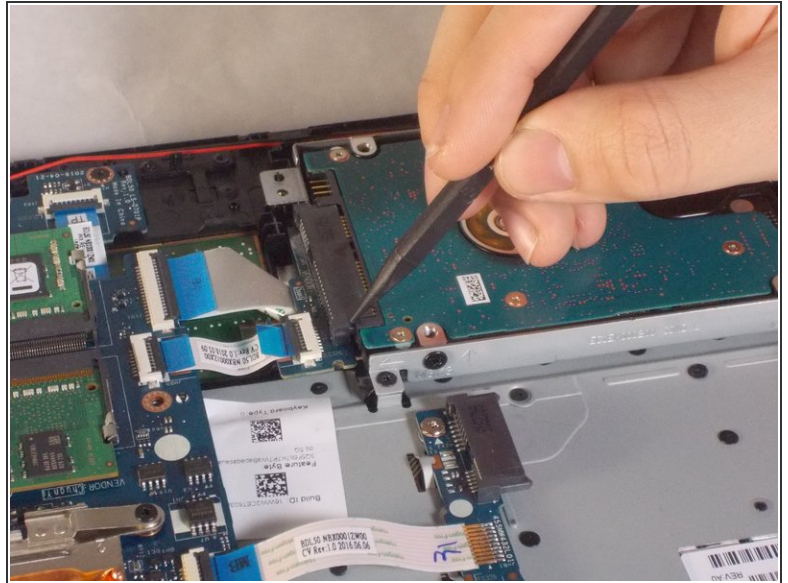
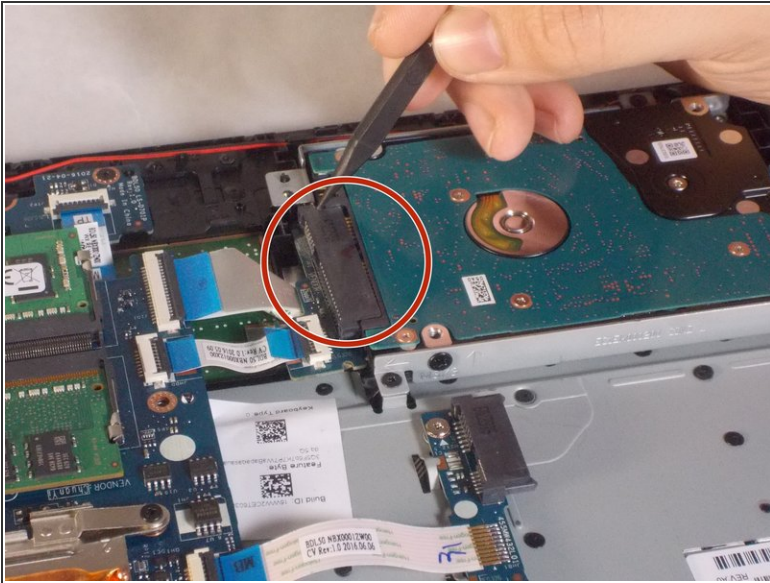
- Carefully use the blue plastic opening tool to pry the clam shell of the laptop apart.
- i* You may need to flip the laptop over to unlatch all of the internal clips.

## Step 6



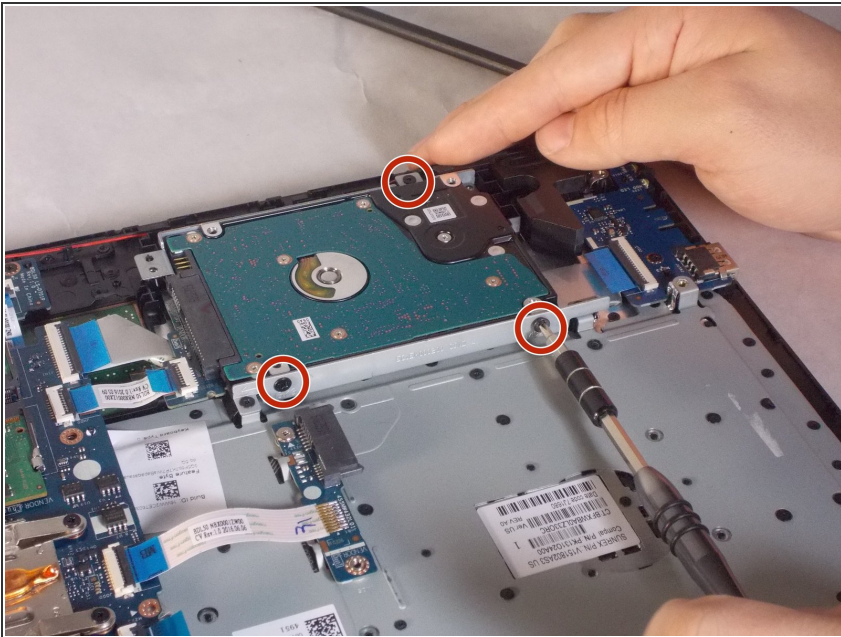
- Carefully pull the shell of the computer apart.

## Step 7 — Hard Drive



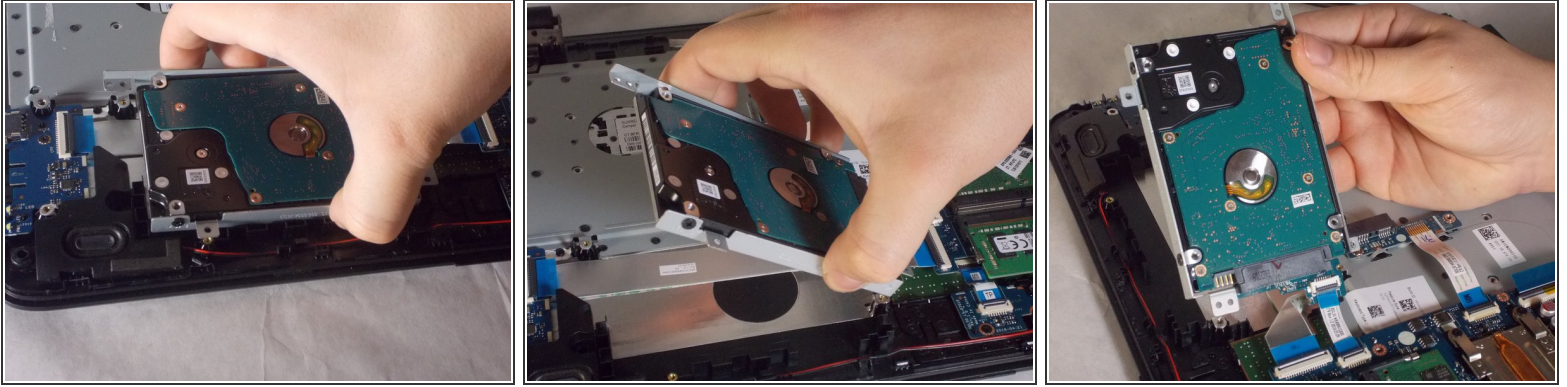
- Using a black nylon spudger, disconnect the black connector that attaches the hard drive to the motherboard

## Step 8



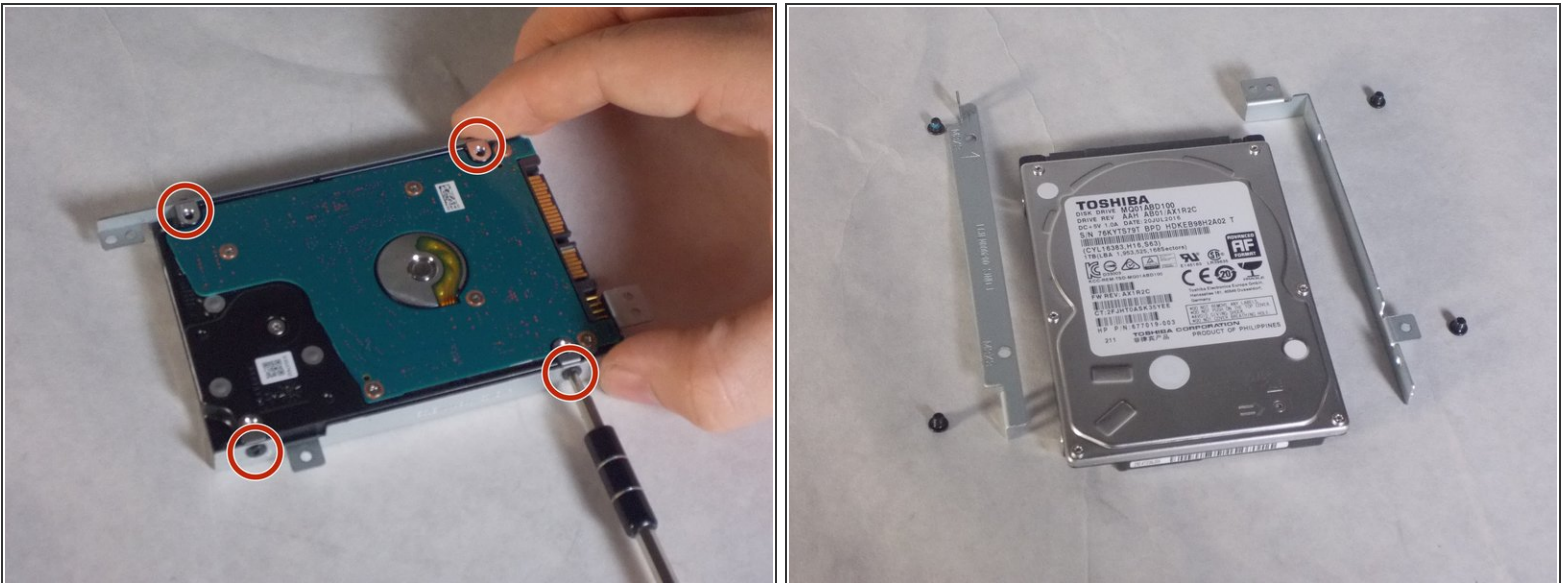
- Using the Phillips #0 screwdriver, unscrew the three screws holding the hard drive down to the board.

## Step 9



- Remove the hard drive.

## Step 10



- Using the Phillips #0 screwdriver, unscrew the four screws from the holding apparatus.

To reassemble your device, follow these instructions in reverse order.