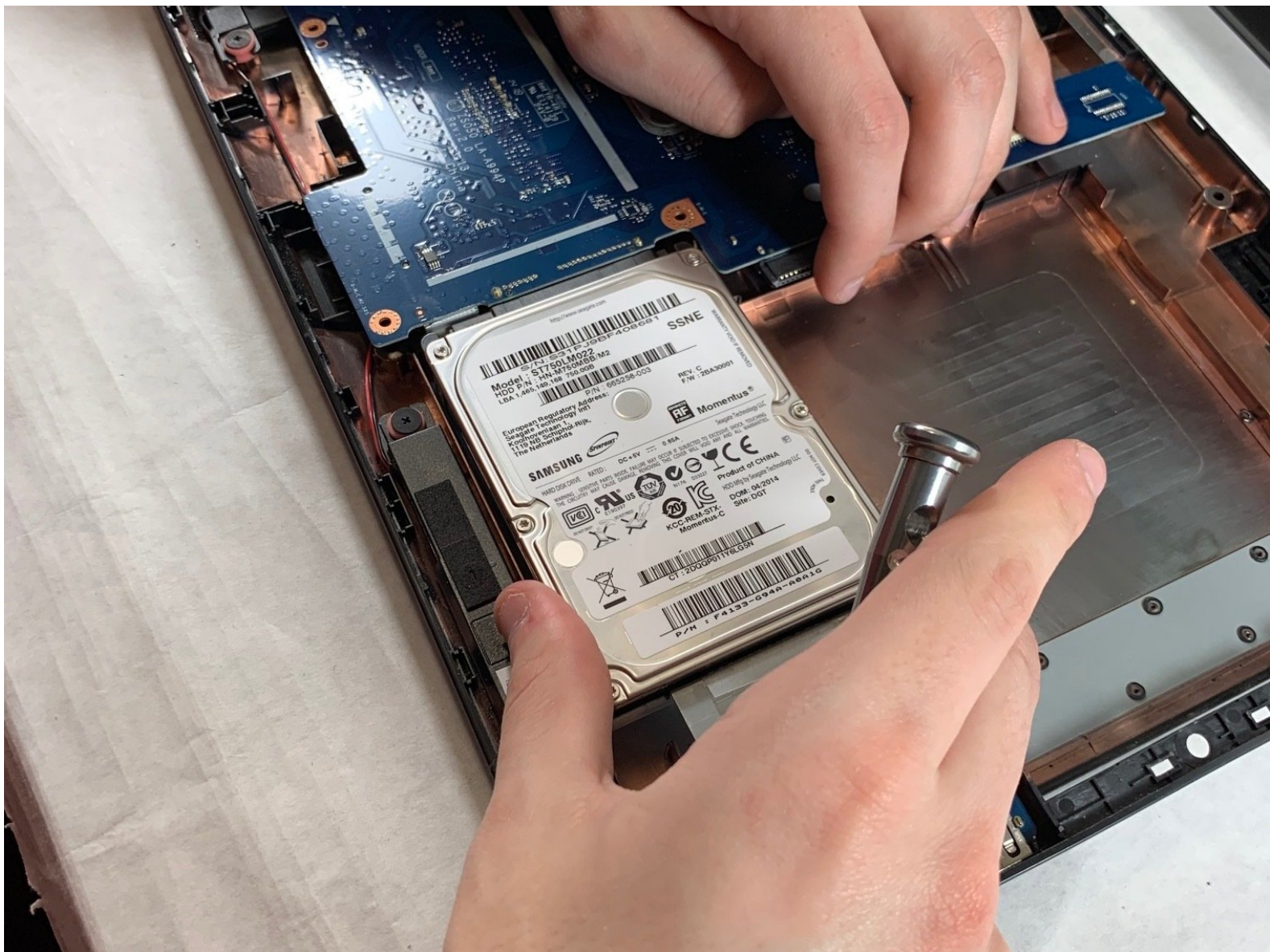




HP 15-R011DX Hard Drive Replacement

This guide will instruct you on how to replace the hard drive in your HP laptop. This guide will also introduce what is required to access the hard drive.

Written By: Ethan Guillotte



INTRODUCTION

A hard drive can be the source of many issues in a laptop computer. This means that it is important to know how to replace a hard drive. Before you decide to replace a hard drive, you should always attempt to back up your data to a secondary source so that nothing is lost in the process.



TOOLS:

- [Phillips #1 Screwdriver](#) (1)
 - [Metal Spudger](#) (1)
-

Step 1 — Battery



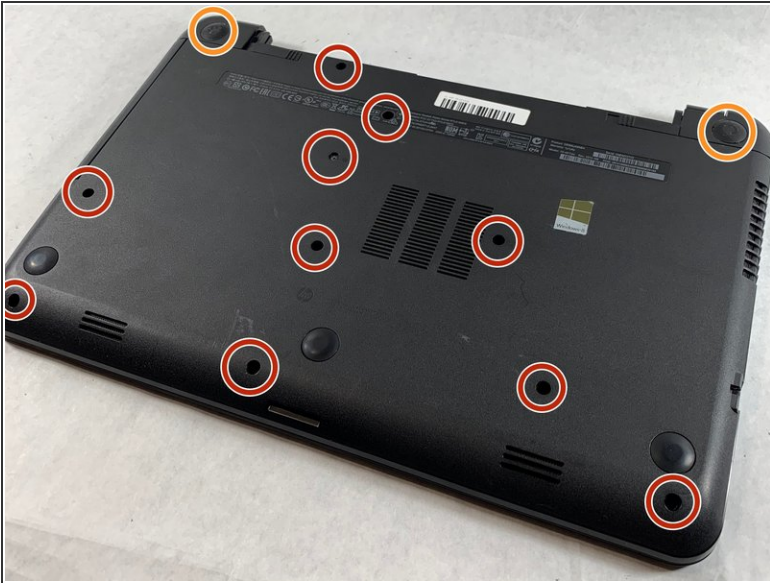
- Slide the lock mechanism on the left side of the laptop to the right.

Step 2



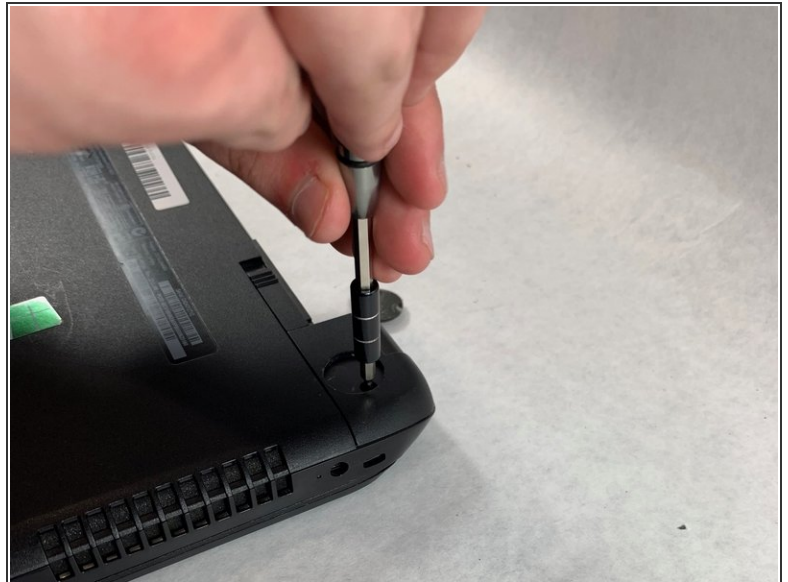
- While holding the right slide mechanism, remove the battery from the laptop.
- ⓘ The battery is not pictured here because it is missing from this particular device.

Step 3 — How to Access the Internal Components of an HP 15-R011DX



- Flip the laptop over to reveal screw locations.
- Use a metal spudger to remove the two rear rubber feet. There are screws hidden underneath them.

Step 4



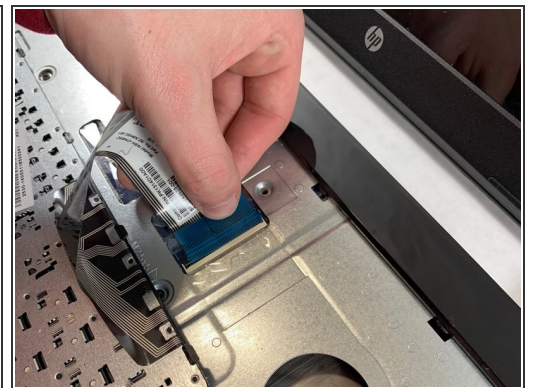
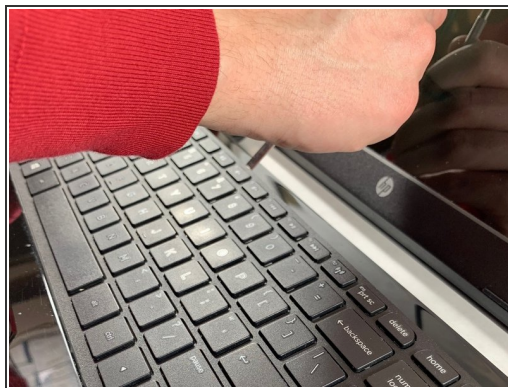
- Remove the twelve 5mm Phillips #1 screws on the back of the laptop.

Step 5



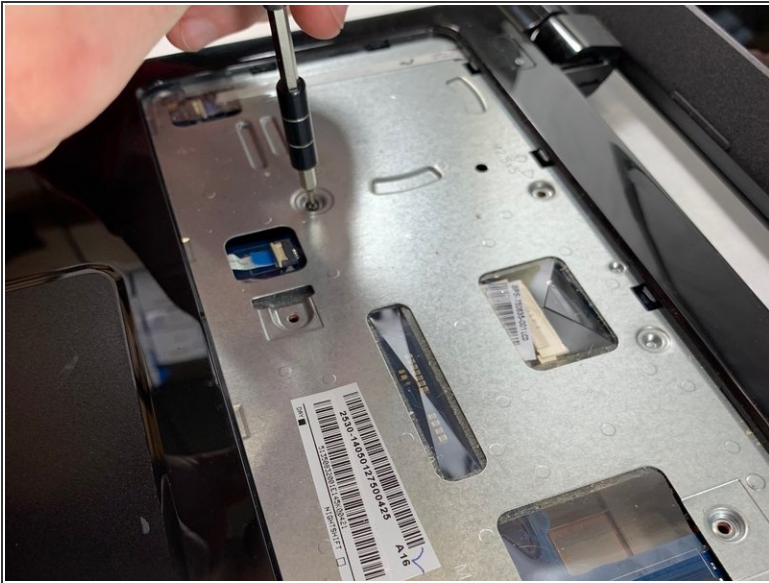
- Remove the DVD drive from the laptop.
- Remove the two 3 mm Phillips #1 screws underneath the DVD drive.

Step 6



- Flip the laptop and open.
- Detach the keyboard by prying it free from the laptop using a spudger.
 - ⚠ Do not completely remove the keyboard yet. It is still attached by a ribbon cable.
- Disconnect the keyboard ribbon cable.

Step 7



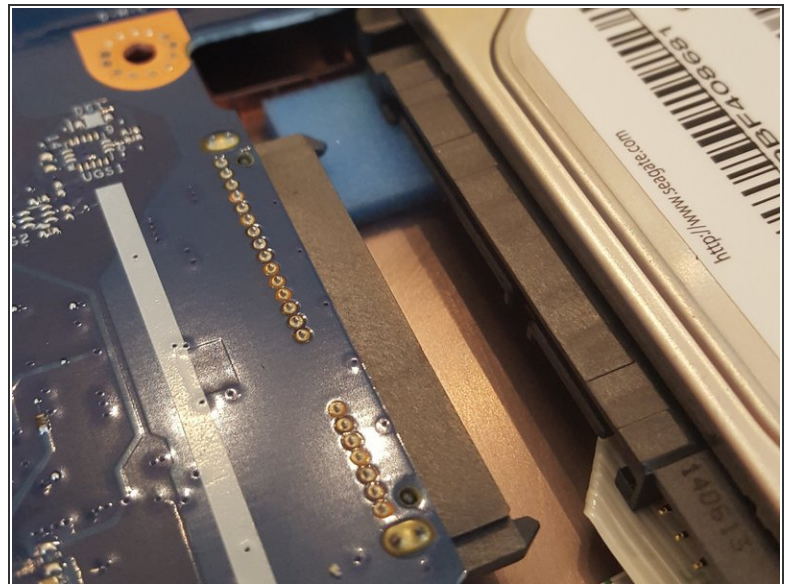
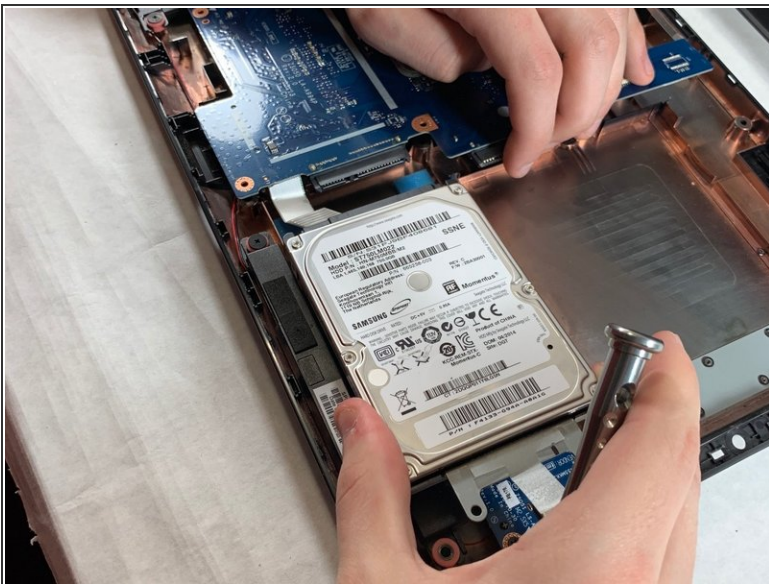
- Disconnect the two narrow ribbon cables to the left of the keyboard connection.
 - Remove five 4 mm Phillips #1 screws from the metal tray for the keyboard.
 - Pry open the plastic casing using a spudger.
- ⚠ If struggling to remove the plastic case, check that all screws have been removed.

Step 8 — Hard Drive



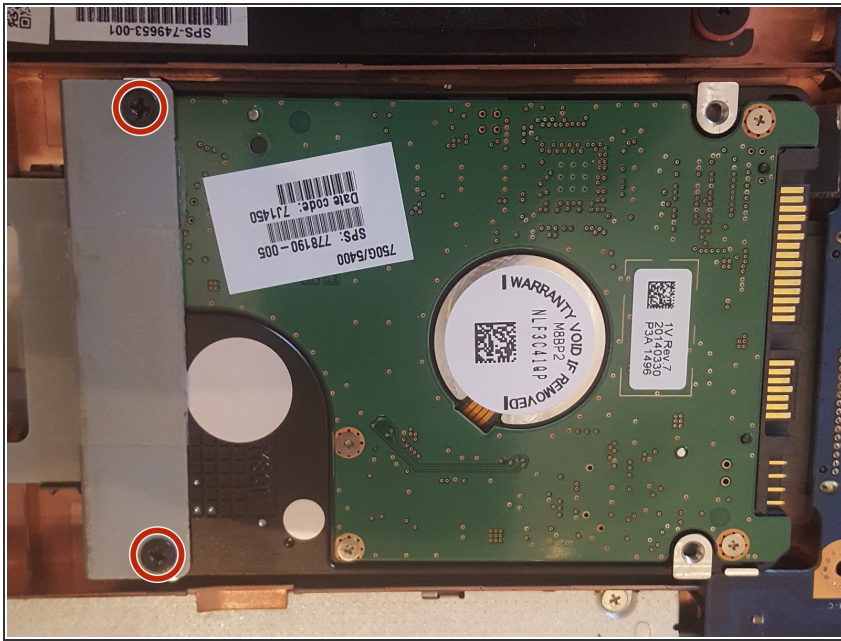
- Remove two 5 mm Phillips #1 screws located at the base of the hard drive.

Step 9



- Pull the hard drive upwards and away from the laptop.
- The hard drive should disconnect from its port on the motherboard as shown in the second image.

Step 10



- Flip the hard drive over.
- Remove the two 4 mm Phillips #1 screws from the base of the hard drive.
- Remove the mounting brace (silver bracket) from the hard drive.

To reassemble your device, follow these instructions in reverse order.