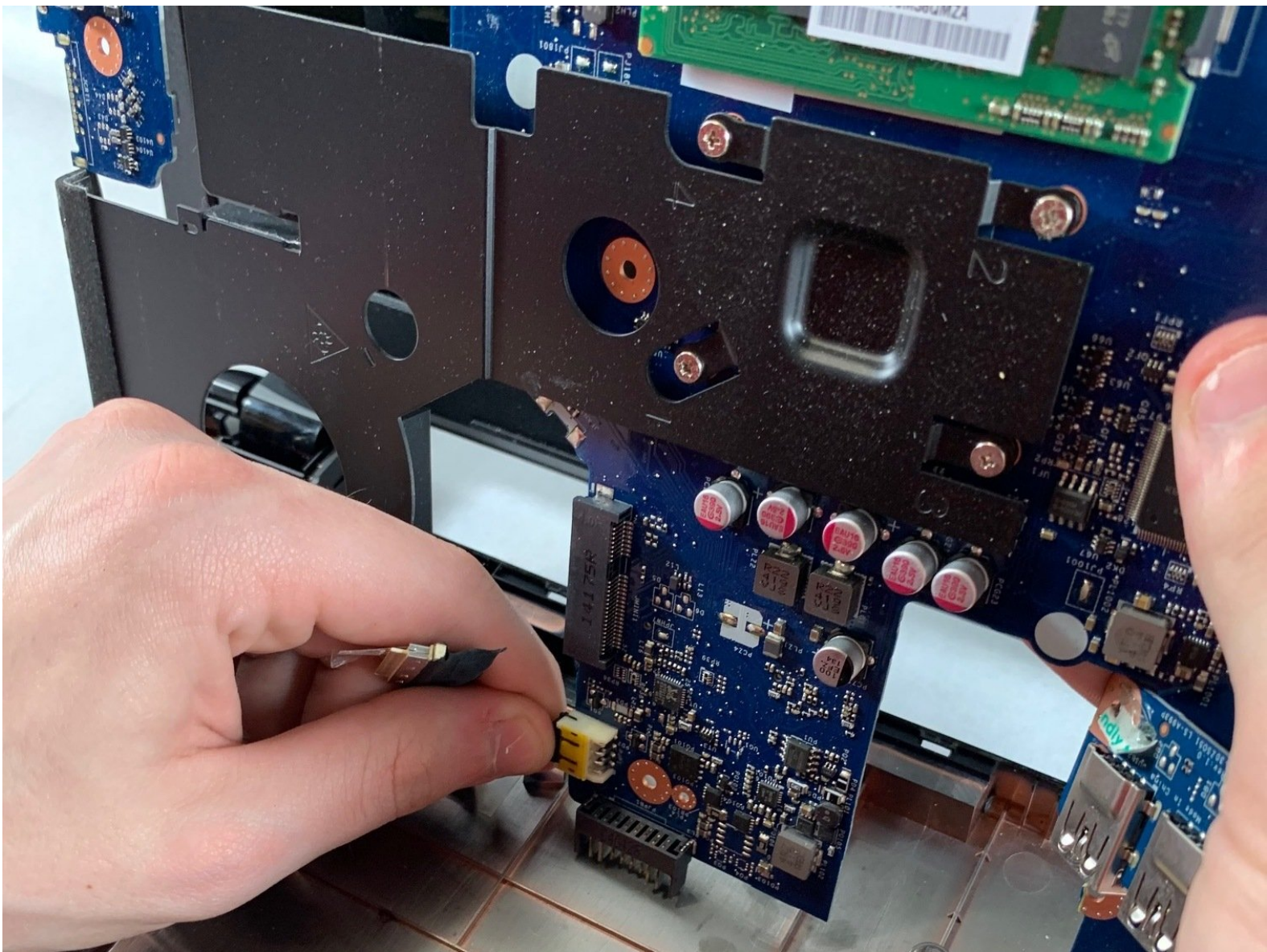




HP 15-R011DX Motherboard Replacement

This guide shows the necessary prerequisites to access the motherboard of the HP 15-R011DX. It also shows how to uninstall and replace the motherboard.

Written By: Ethan Guillotte



INTRODUCTION

The motherboard is the main hub for every component in a laptop. For this reason, one should always know how to access and disconnect any component from a motherboard. Removing a motherboard is also a necessary prerequisite to accessing components such as the RAM and CPU.



TOOLS:

- [Metal Spudger](#) (1)
 - [Phillips #1 Screwdriver](#) (1)
-

Step 1 — Battery



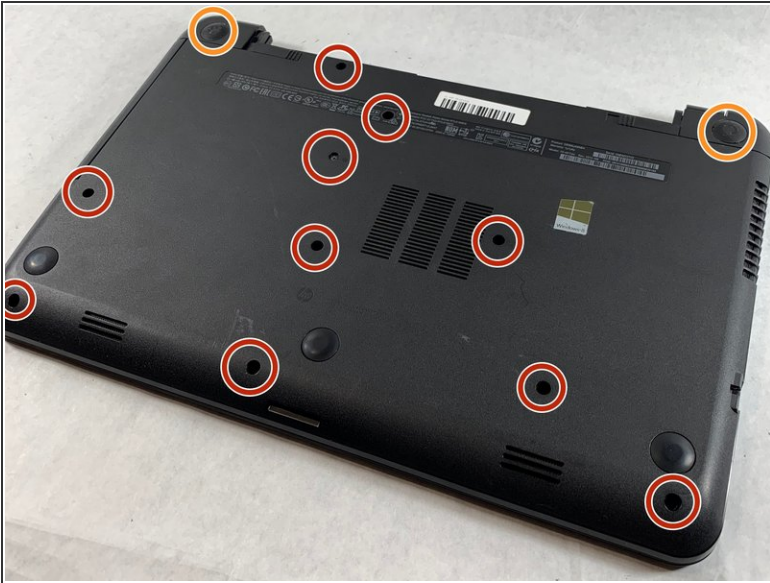
- Slide the lock mechanism on the left side of the laptop to the right.

Step 2



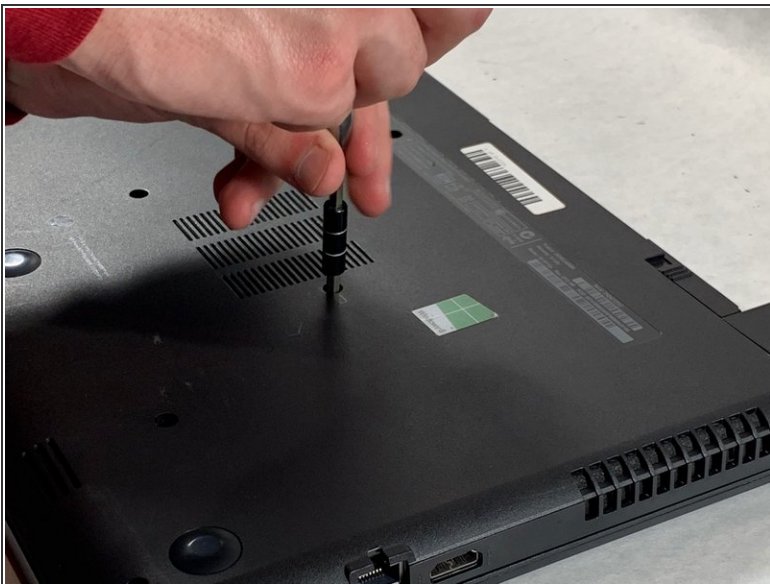
- While holding the right slide mechanism, remove the battery from the laptop.
- ⓘ The battery is not pictured here because it is missing from this particular device.

Step 3 — How to Access the Internal Components of an HP 15-R011DX



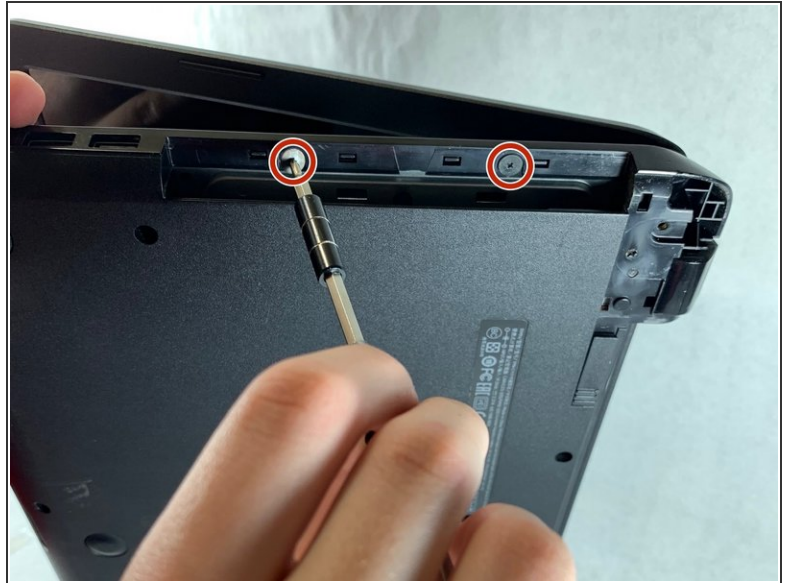
- Flip the laptop over to reveal screw locations.
- Use a metal spudger to remove the two rear rubber feet. There are screws hidden underneath them.

Step 4



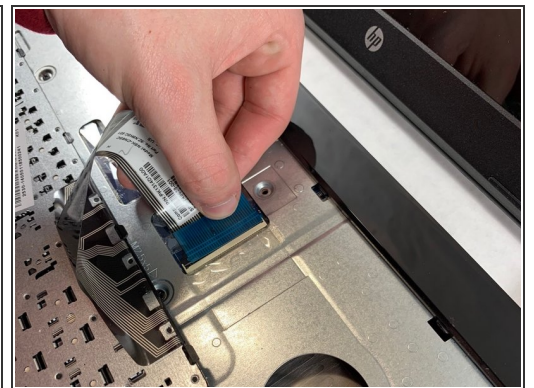
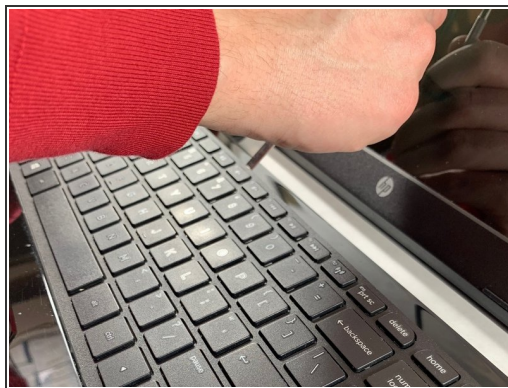
- Remove the twelve 5mm Phillips #1 screws on the back of the laptop.

Step 5



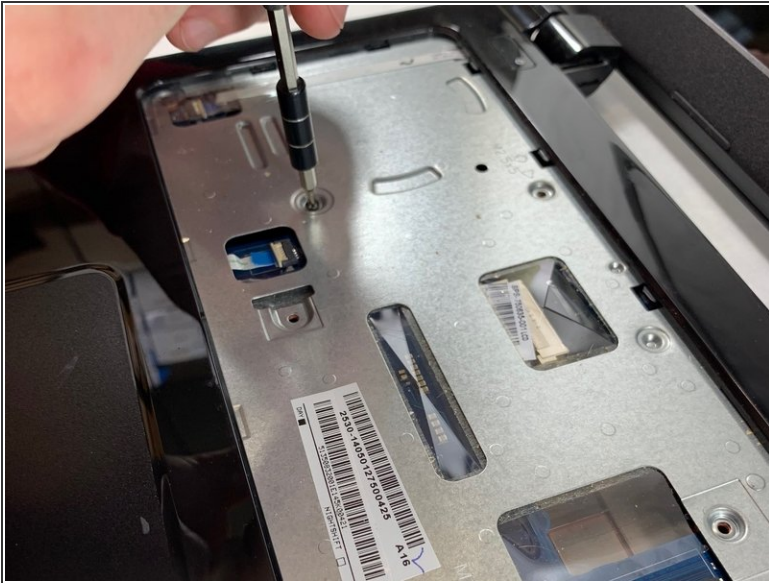
- Remove the DVD drive from the laptop.
- Remove the two 3 mm Phillips #1 screws underneath the DVD drive.

Step 6



- Flip the laptop and open.
- Detach the keyboard by prying it free from the laptop using a spudger.
 - ⚠ Do not completely remove the keyboard yet. It is still attached by a ribbon cable.
- Disconnect the keyboard ribbon cable.

Step 7



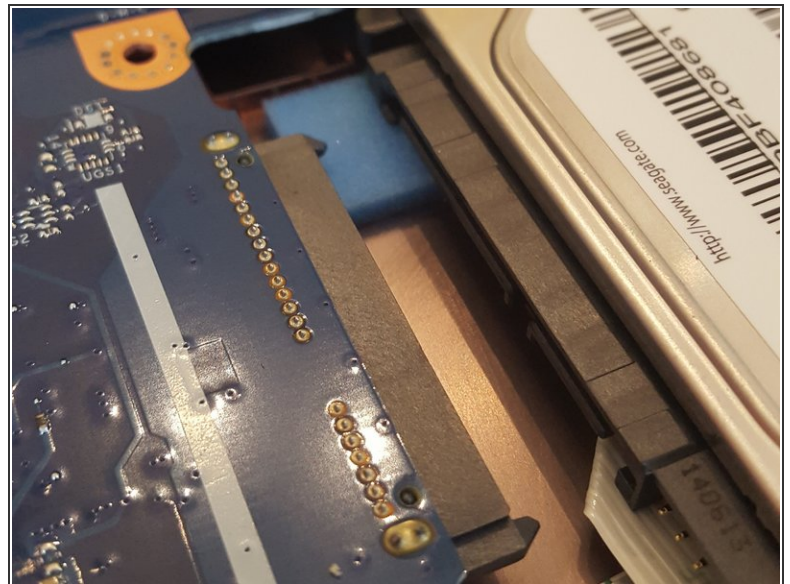
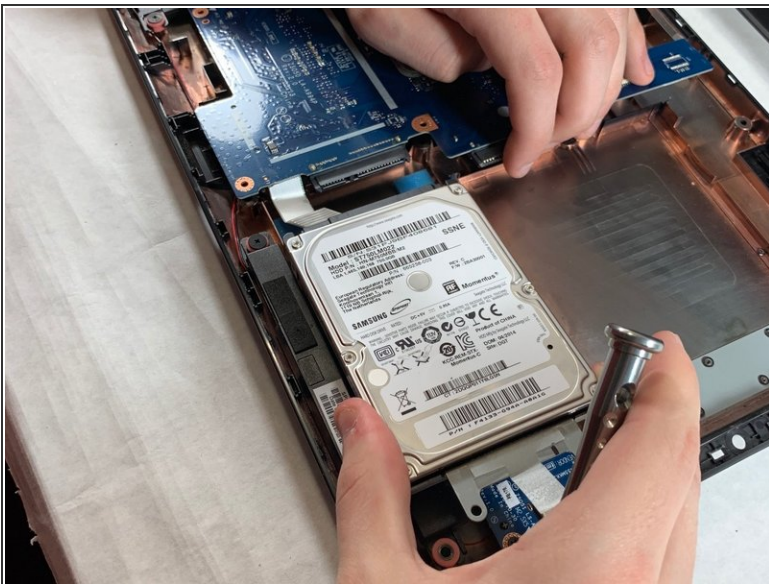
- Disconnect the two narrow ribbon cables to the left of the keyboard connection.
 - Remove five 4 mm Phillips #1 screws from the metal tray for the keyboard.
 - Pry open the plastic casing using a spudger.
- ⚠ If struggling to remove the plastic case, check that all screws have been removed.

Step 8 — Hard Drive



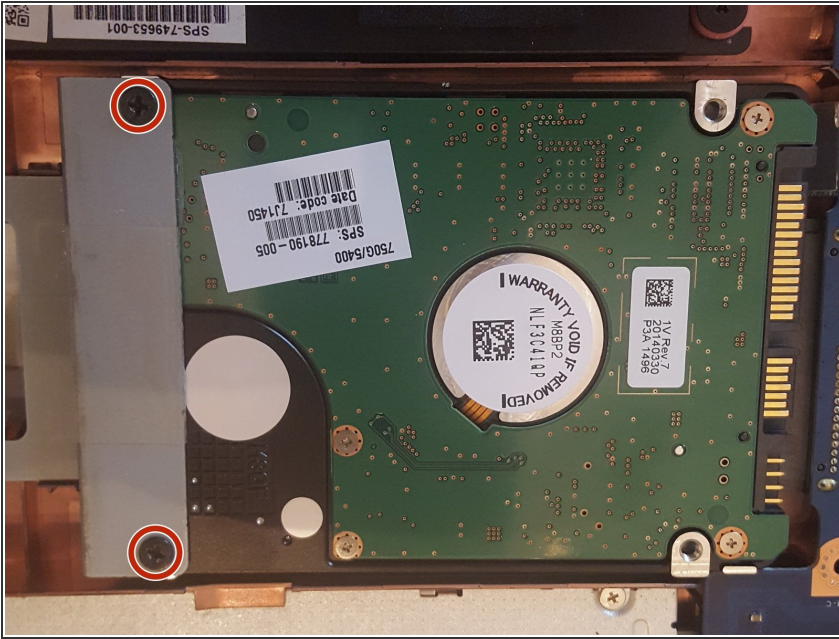
- Remove two 5 mm Phillips #1 screws located at the base of the hard drive.

Step 9



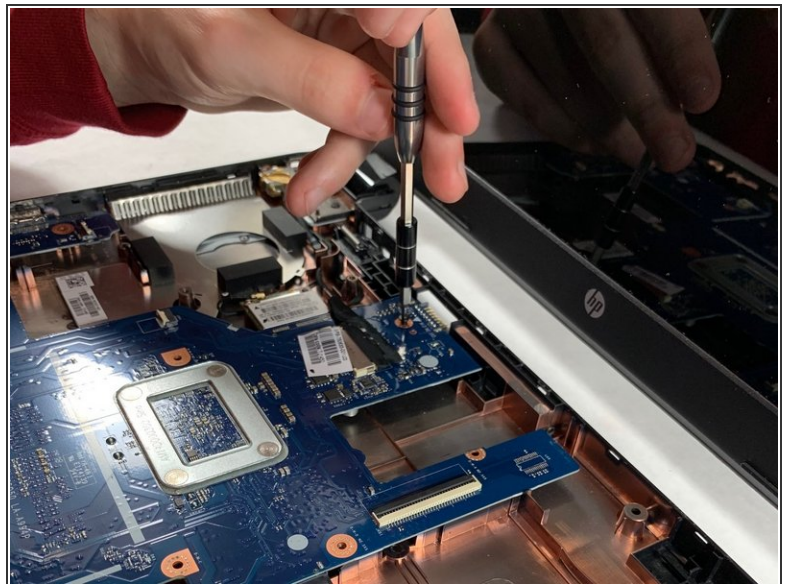
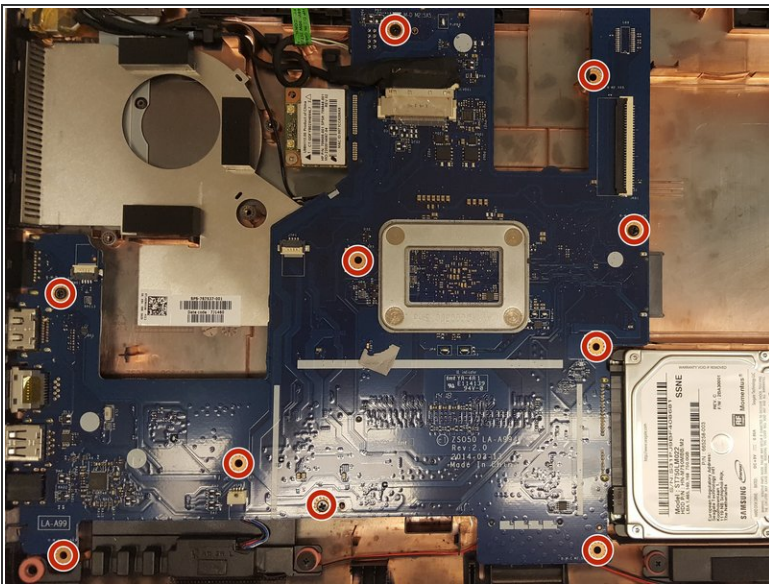
- Pull the hard drive upwards and away from the laptop.
- The hard drive should disconnect from its port on the motherboard as shown in the second image.

Step 10



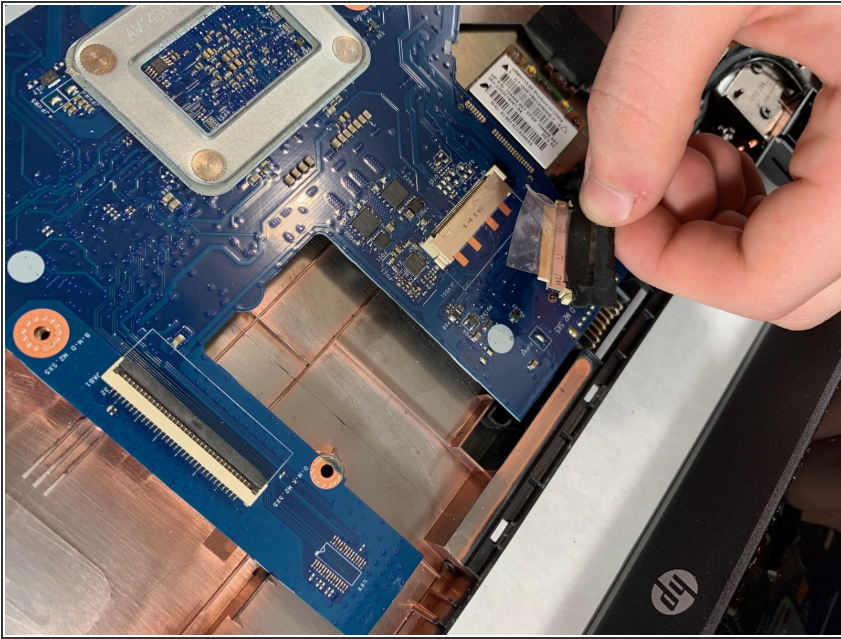
- Flip the hard drive over.
- Remove the two 4 mm Phillips #1 screws from the base of the hard drive.
- Remove the mounting brace (silver bracket) from the hard drive.

Step 11 — Motherboard



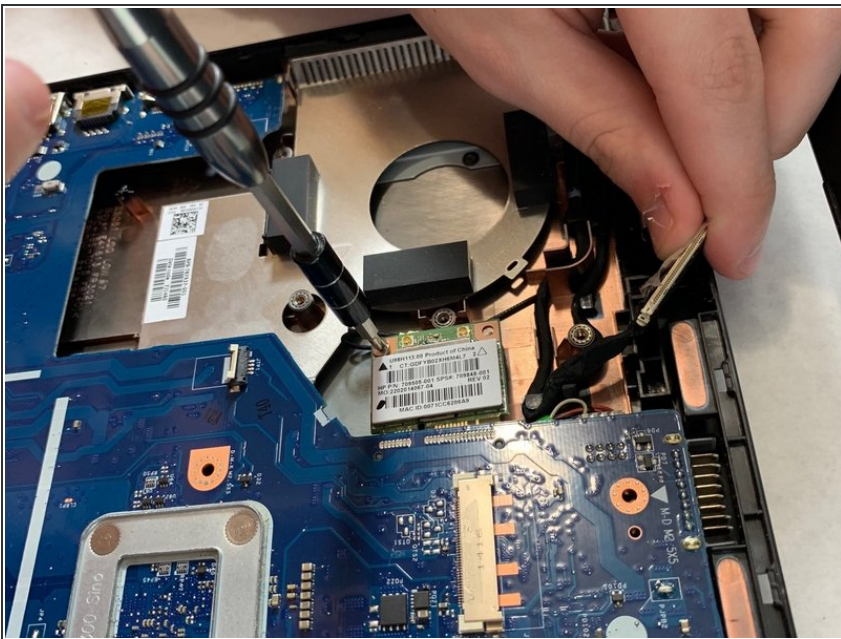
- Remove ten 5 mm Philips #1 screws from the motherboard.

Step 12



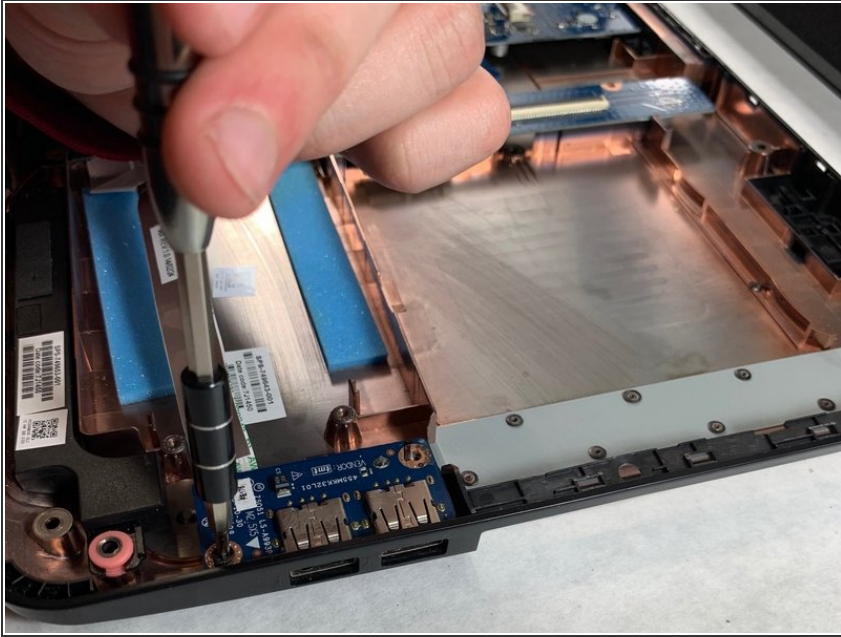
- Remove the tape from the display connector attached to the motherboard.
- Disconnect the display connector from the motherboard.

Step 13



- Remove one 4 mm Phillips #1 screw from the wireless chip.
- Remove the wireless chip from the motherboard.

Step 14



- Remove two 5 mm Phillips #1 screws from the USB component connected to the motherboard.
- Lift the USB component until the band connecting it to the motherboard lifts off of the laptop.

Step 15



- Slowly lift the motherboard out of the computer.
- ⚠ **Be sure that the I/O ports on the left side of the motherboard are not stuck on the laptop frame.**
- Disconnect the power connector from the motherboard as shown in the image.

To reassemble your device, follow these instructions in reverse order.