



HP 15-R011DX RAM (Random Access Memory) Replacement

This guide will help with instructing you on how to replace your RAM drive in your device.

Written By: Joshua Brockman



INTRODUCTION

The RAM of a device is key to its performance. Due to this, it is vital to knowing how to replace the RAM drive that is in your HP device. Always remember however that before replacing internal components that you should always back up the data in your device.



TOOLS:

- [Metal Spudger](#) (1)
 - [Phillips #1 Screwdriver](#) (1)
-

Step 1 — Battery



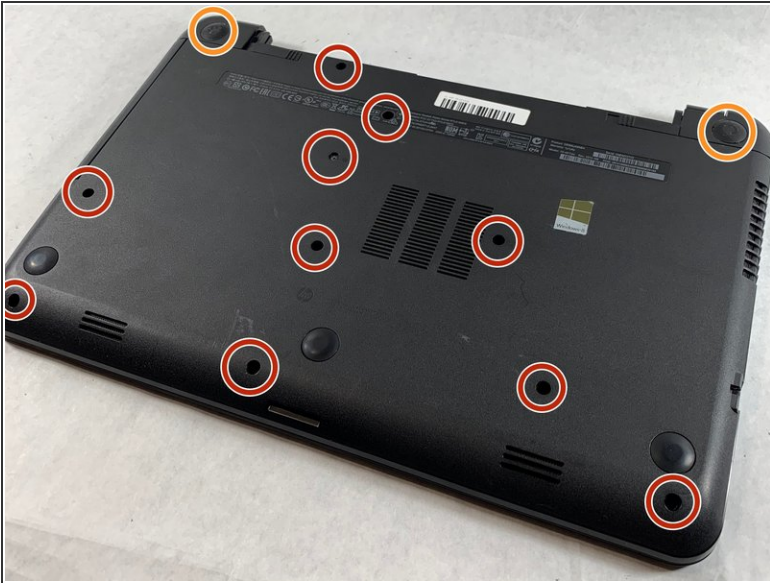
- Slide the lock mechanism on the left side of the laptop to the right.

Step 2



- While holding the right slide mechanism, remove the battery from the laptop.
- ⓘ The battery is not pictured here because it is missing from this particular device.

Step 3 — How to Access the Internal Components of an HP 15-R011DX



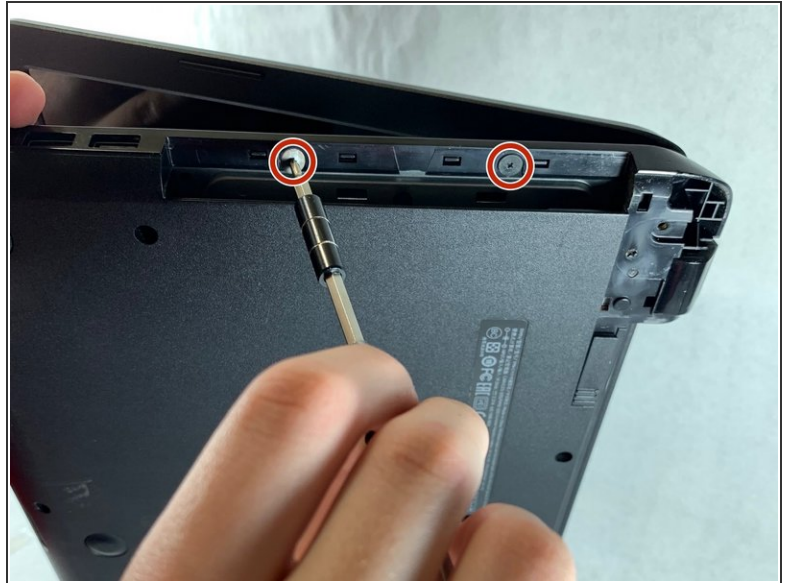
- Flip the laptop over to reveal screw locations.
- Use a metal spudger to remove the two rear rubber feet. There are screws hidden underneath them.

Step 4



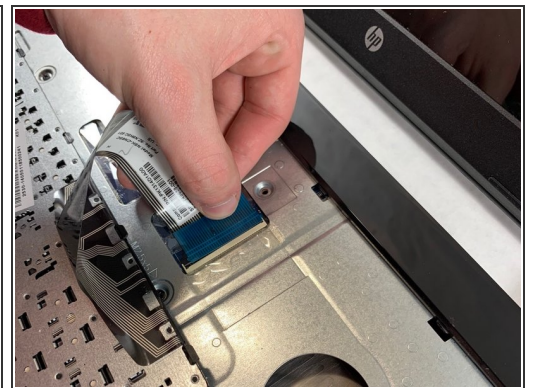
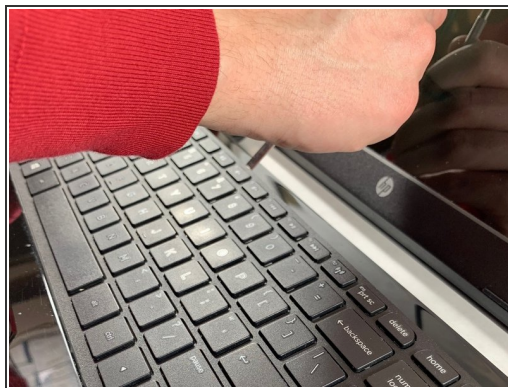
- Remove the twelve 5mm Phillips #1 screws on the back of the laptop.

Step 5



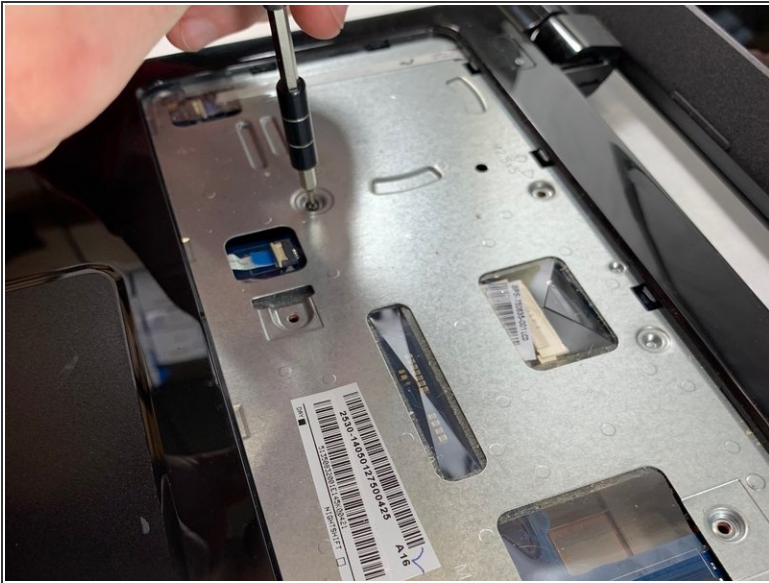
- Remove the DVD drive from the laptop.
- Remove the two 3 mm Phillips #1 screws underneath the DVD drive.

Step 6



- Flip the laptop and open.
- Detach the keyboard by prying it free from the laptop using a spudger.
 - ⚠ Do not completely remove the keyboard yet. It is still attached by a ribbon cable.
- Disconnect the keyboard ribbon cable.

Step 7



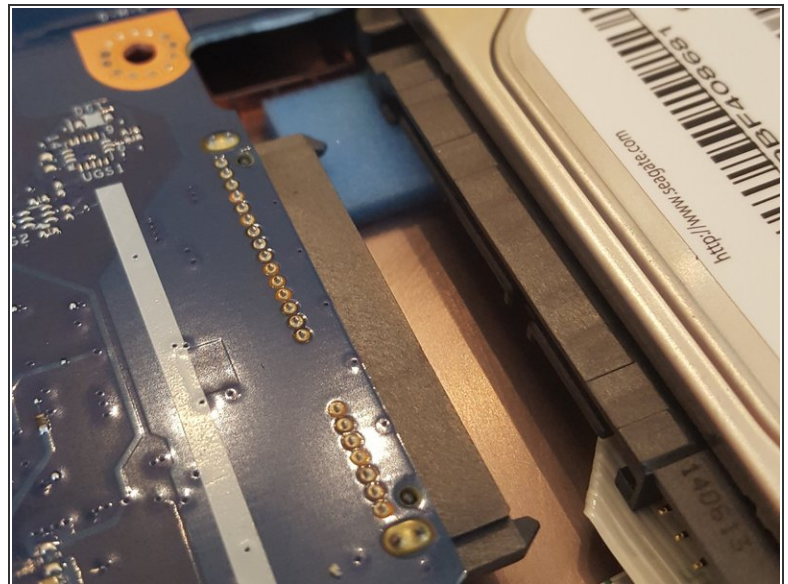
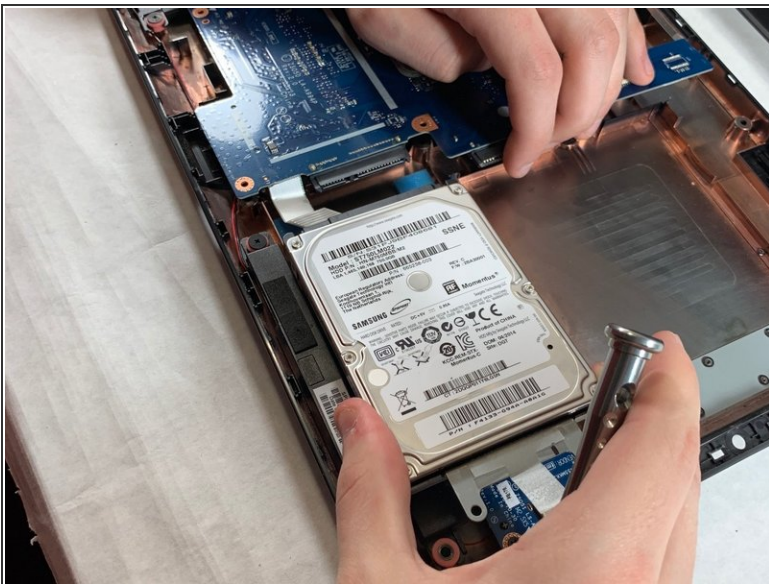
- Disconnect the two narrow ribbon cables to the left of the keyboard connection.
 - Remove five 4 mm Phillips #1 screws from the metal tray for the keyboard.
 - Pry open the plastic casing using a spudger.
- ⚠ If struggling to remove the plastic case, check that all screws have been removed.

Step 8 — Hard Drive



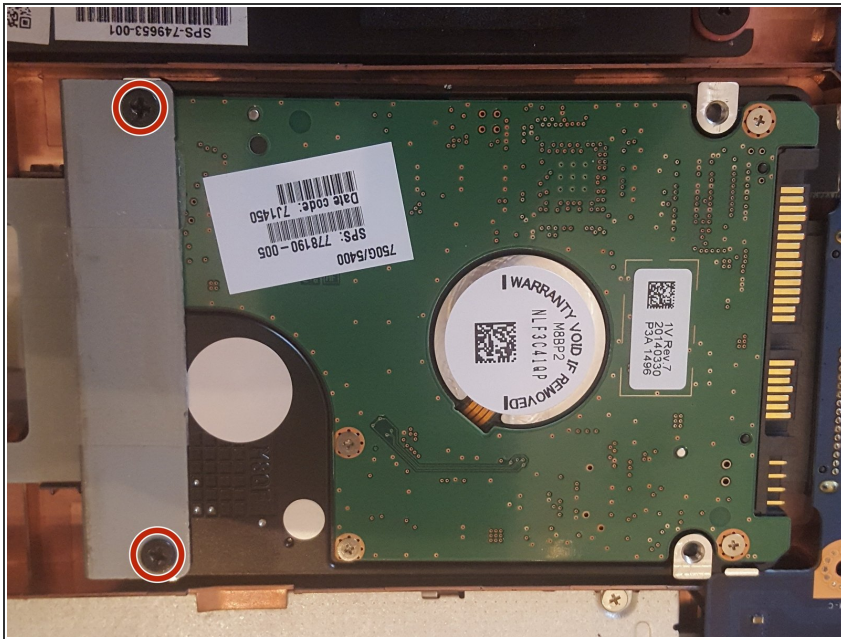
- Remove two 5 mm Phillips #1 screws located at the base of the hard drive.

Step 9



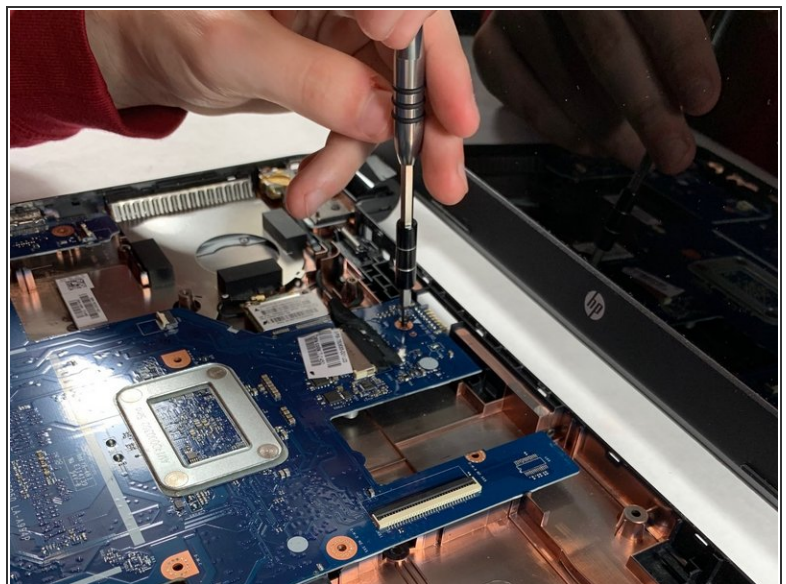
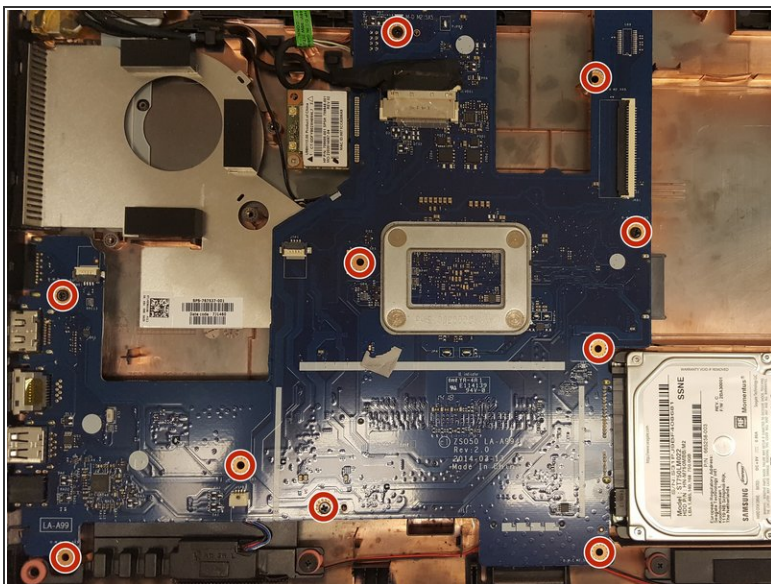
- Pull the hard drive upwards and away from the laptop.
- The hard drive should disconnect from its port on the motherboard as shown in the second image.

Step 10



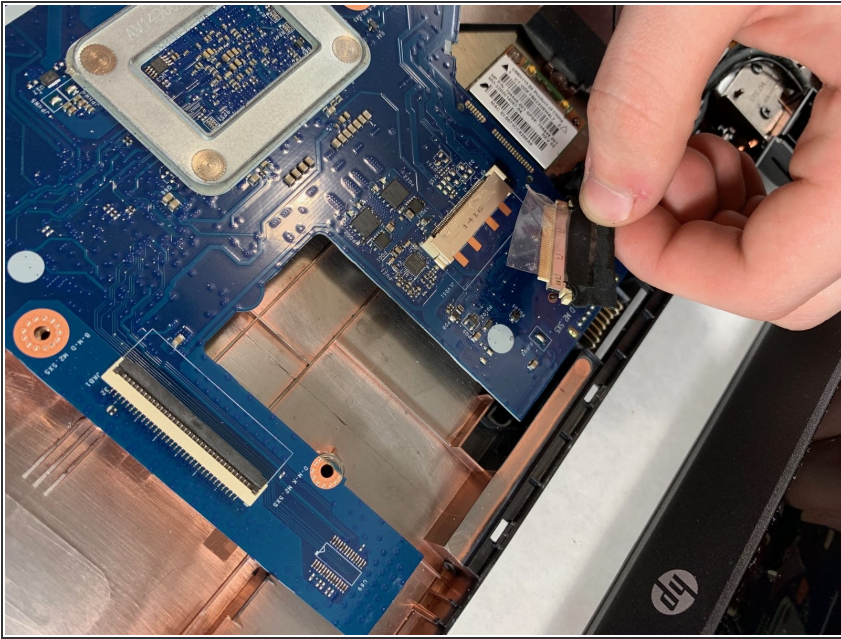
- Flip the hard drive over.
- Remove the two 4 mm Phillips #1 screws from the base of the hard drive.
- Remove the mounting brace (silver bracket) from the hard drive.

Step 11 — Motherboard



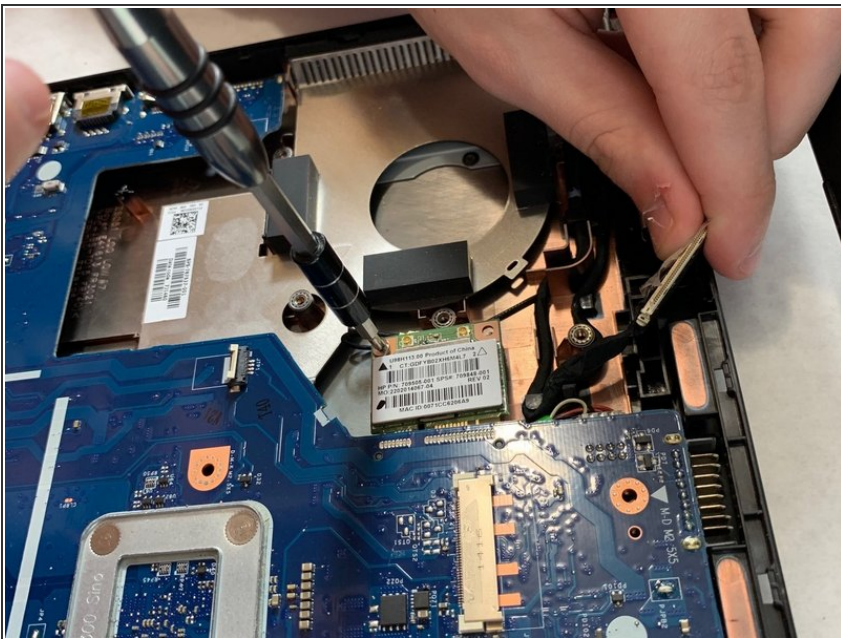
- Remove ten 5 mm Philips #1 screws from the motherboard.

Step 12



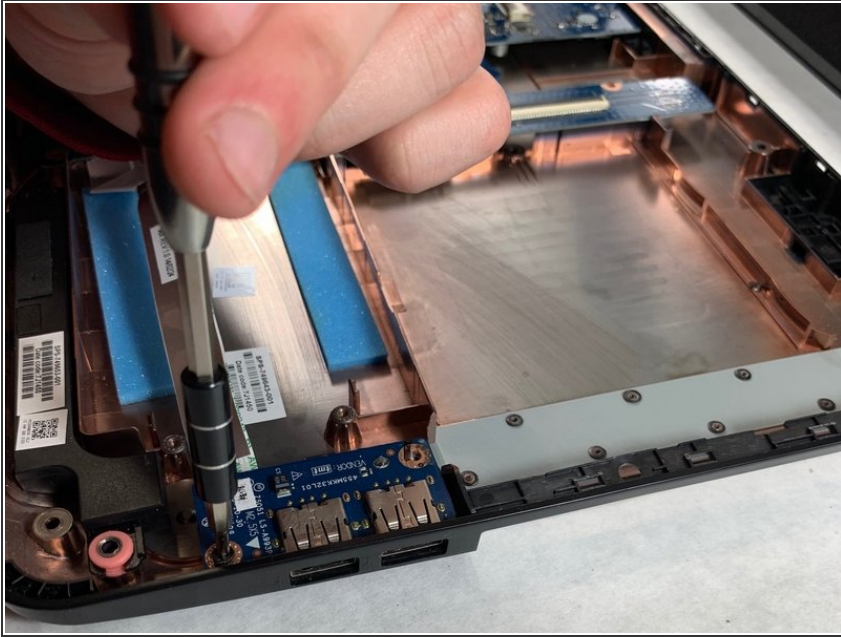
- Remove the tape from the display connector attached to the motherboard.
- Disconnect the display connector from the motherboard.

Step 13



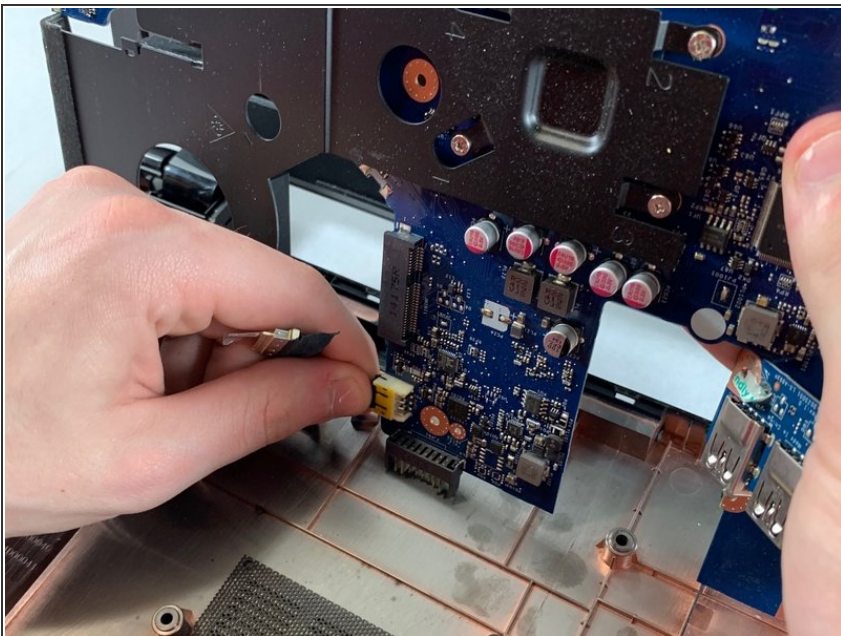
- Remove one 4 mm Phillips #1 screw from the wireless chip.
- Remove the wireless chip from the motherboard.

Step 14



- Remove two 5 mm Phillips #1 screws from the USB component connected to the motherboard.
- Lift the USB component until the band connecting it to the motherboard lifts off of the laptop.

Step 15



- Slowly lift the motherboard out of the computer.
- ⚠ **Be sure that the I/O ports on the left side of the motherboard are not stuck on the laptop frame.**
- Disconnect the power connector from the motherboard as shown in the image.

Step 16 — RAM (Random Access Memory)



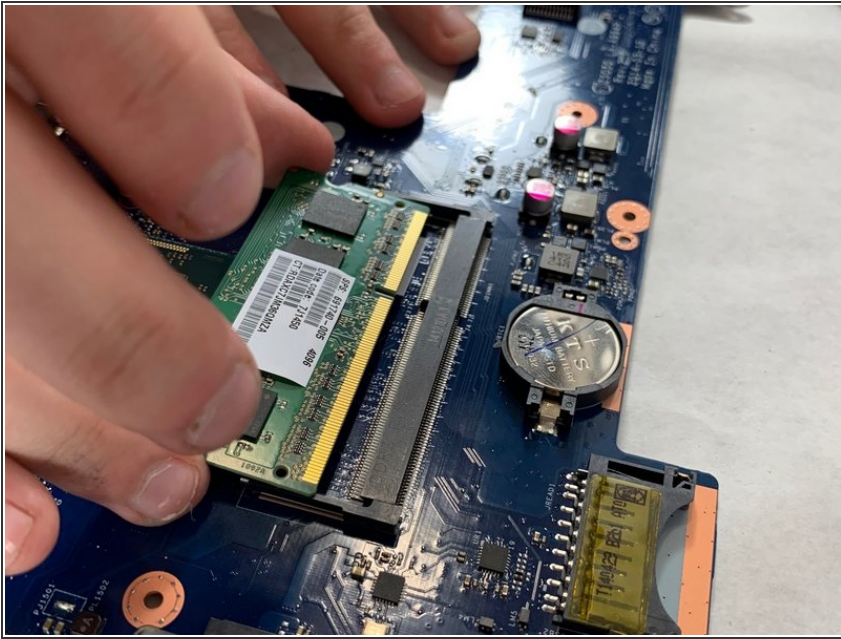
- Locate the RAM drive on the underside of the motherboard.

Step 17



- Push the locking tabs outward to release the RAM chip from the motherboard.

Step 18



- Remove the RAM chip by pulling the drive from the connectors.

To reassemble your device, follow these instructions in reverse order.