



Written By: Drake Hort



Page 1 of 9

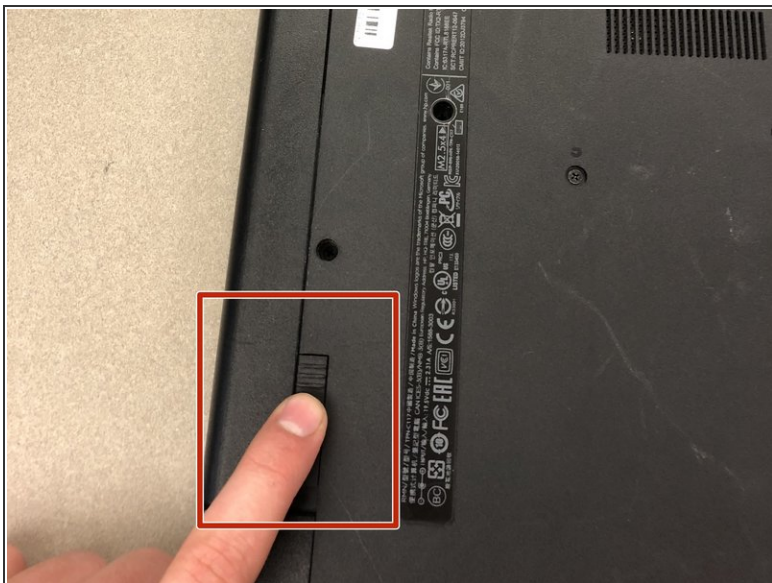
INTRODUCTION

If the computer will not boot upon start-up but shows BIOS dialog, the component in suspect is the hard drive. In this case, the hard drive is faulty or broken and needs replacement.

TOOLS:

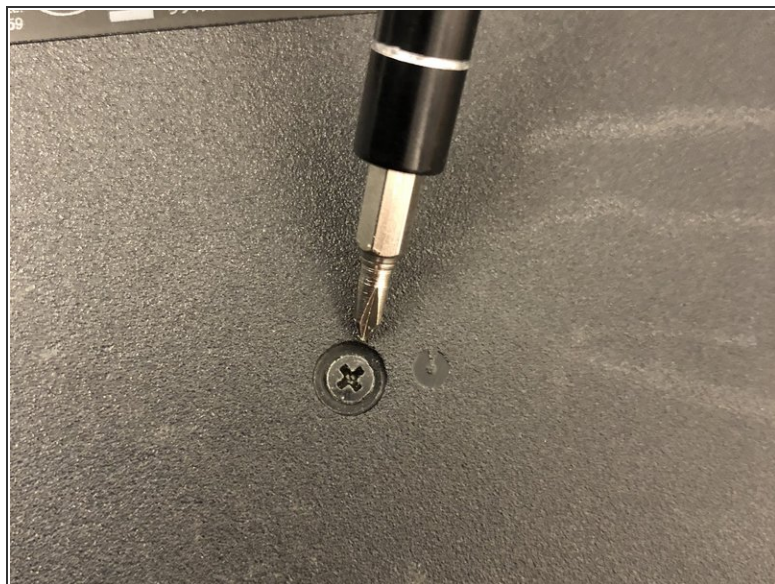
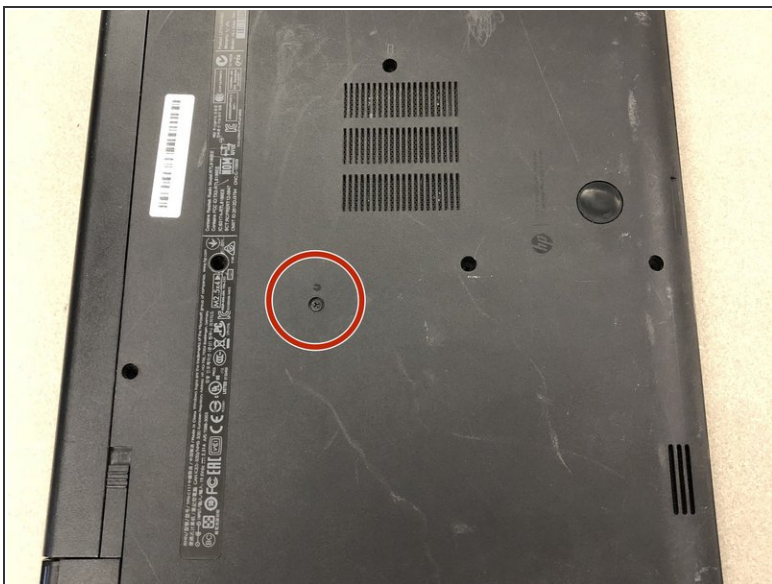
- [Phillips #1 Screwdriver](#) (1)
 - [Metal Spudger](#) (1)
 - [Spudger](#) (1)
-

Step 1 — Battery



- Eject the battery from the computer by sliding the two clips on the bottom of the computer toward the center of the computer.
- Slide the battery out as shown in the picture.

Step 2 — Optical Drive



- Using a Phillips #1 screwdriver, remove the small screw next to the disc engraving shown in the picture.

Step 3



- Gently slide the optical drive out of the side of the computer.

Step 4 — HP 15-R263DX Disassembly



- Locate the two corner grips on the hinge side of the computer.
- Using a metal spudger, remove the two corner grips to reveal the screws.

Step 5



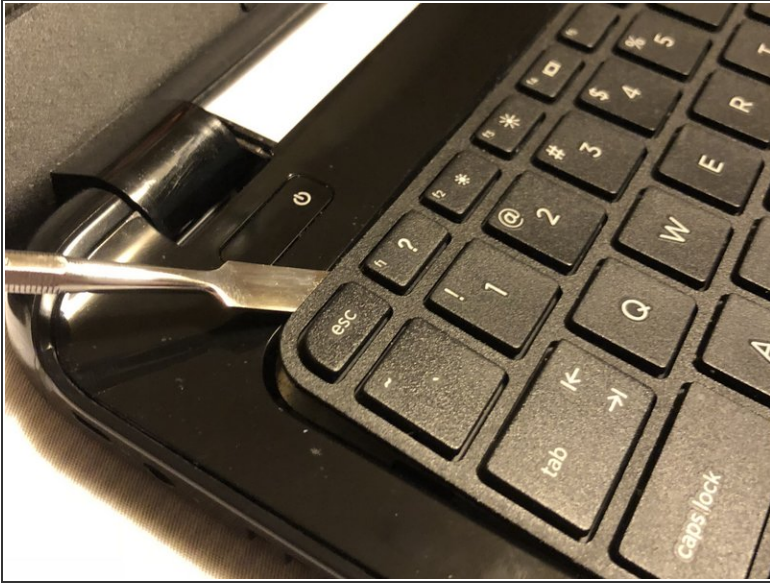
- Remove the 11 small screws on the bottom of the computer that are shown in the picture.


Step 6



- Remove the 2 small screws that are on the bottom side of the disc tray slot.
- ⓘ These screws are shorter and wider than the others.

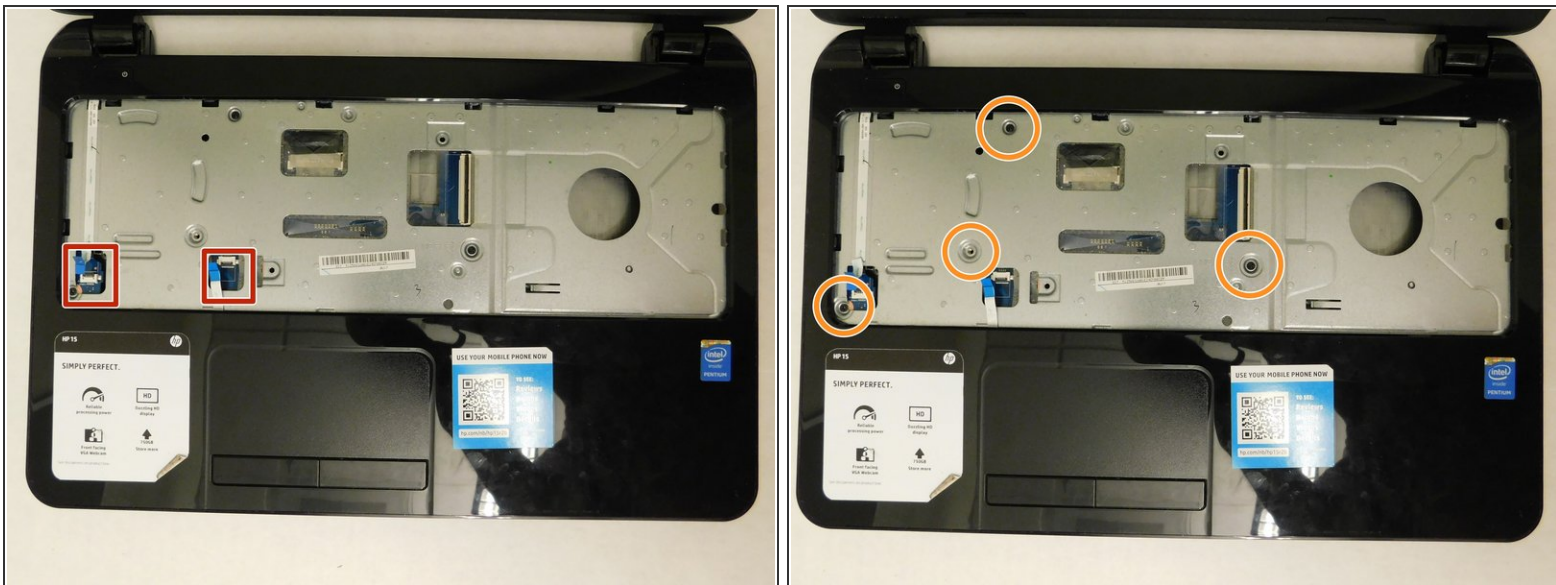
Step 7



 Once the keyboard is loose, do not immediately pull away from computer. It is attached by the ribbon connector.

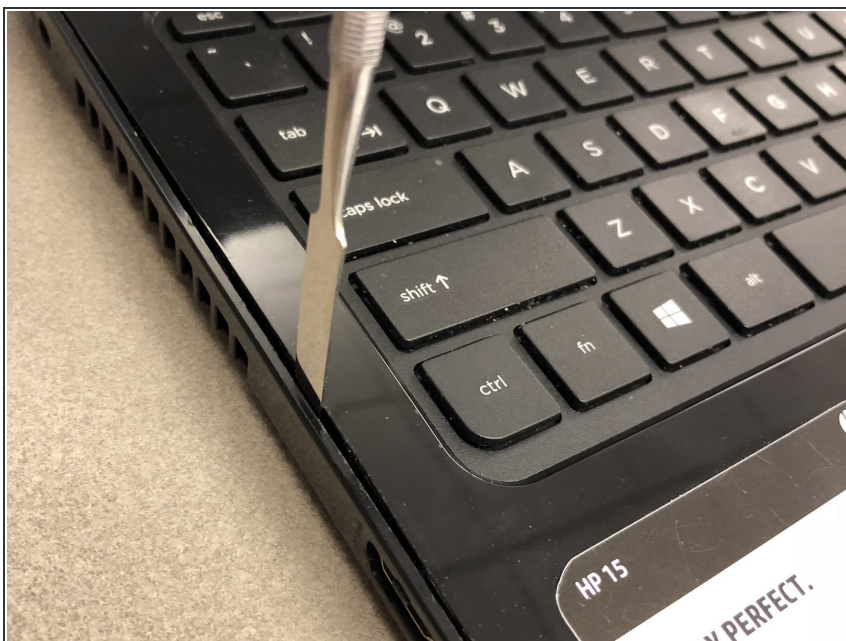
- Using a spudger, pry around the edges of the keyboard until all clips are disengaged and the keyboard is loose from the computer.
- To disconnect the ribbon connector, flip up the black clip shown in the picture.
- Gently pull the ribbon until disconnected.

Step 8



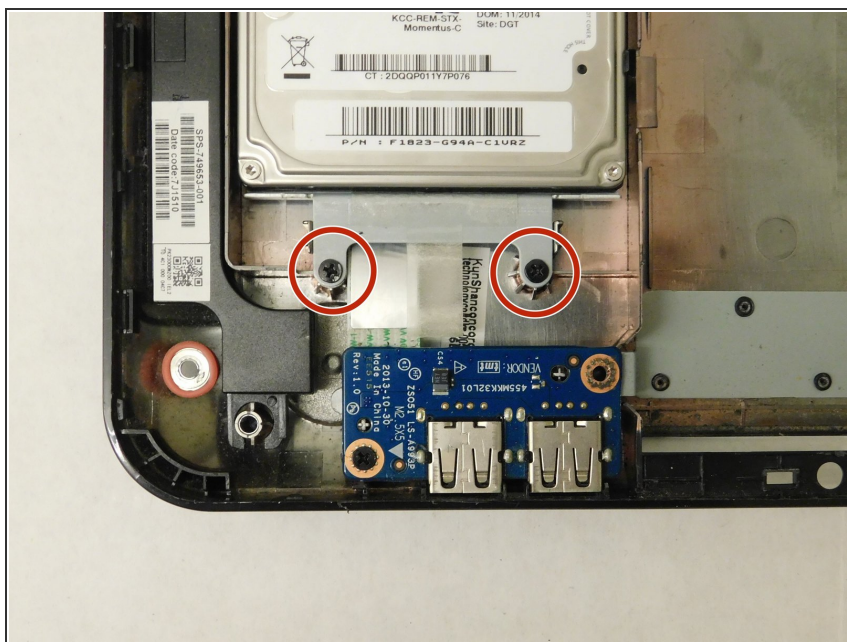
- Disconnect the other two ribbon connectors underneath the keyboard by flipping up the black clips.
- Remove the 4 small screws shown in the picture.

Step 9



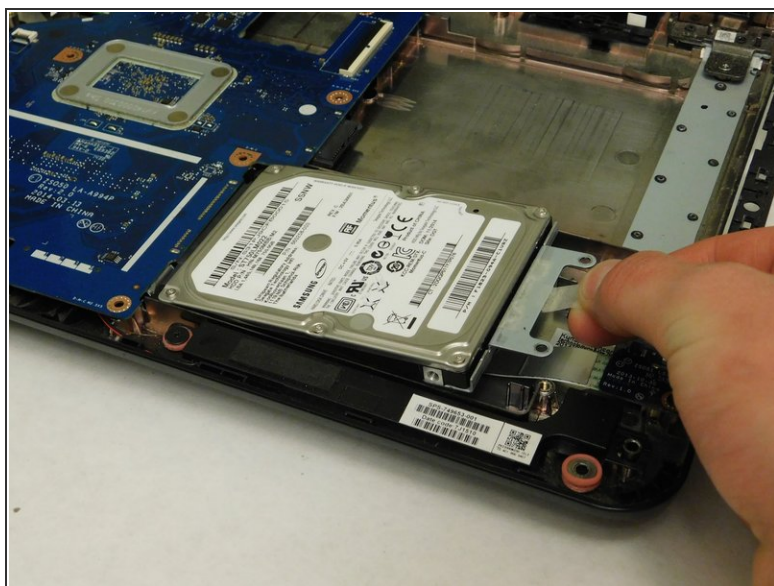
- Disengage the face plate clips by prying the case away from around the outer edge of the face plate with a metal wedge.
- The face plate can then be lifted away from the computer.

Step 10 — Hard Drive



- Remove the 2 black screws holding the hard drive to the computer frame.

Step 11



- Gently slide the hard drive away from the motherboard to disconnect it.
- After it's disconnected, lift the hard drive up to remove it from the computer.

To reassemble your device, follow these instructions in reverse order.