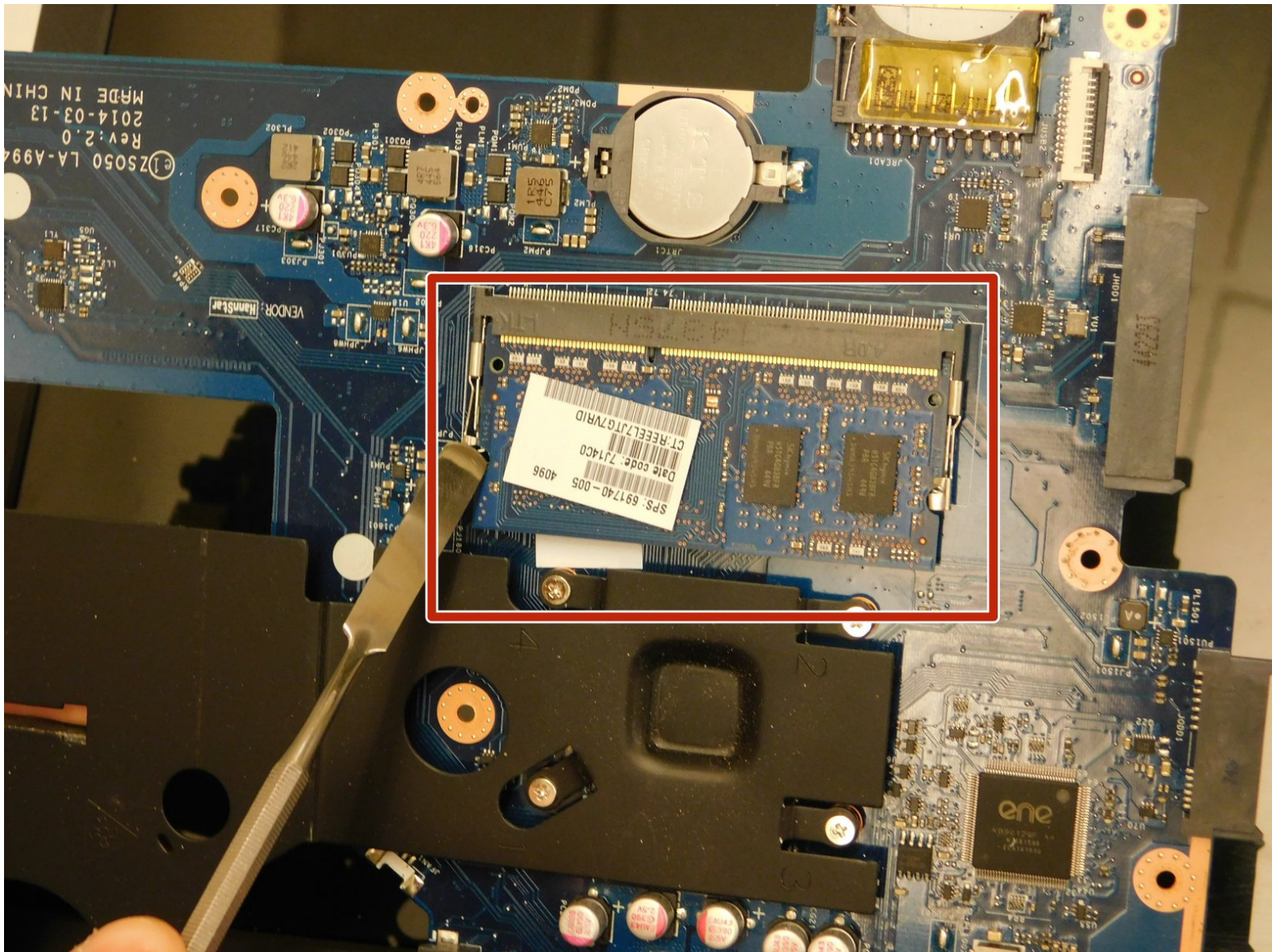




HP 15-R263DX RAM Replacement

This is a tutorial for replacing the RAM in the HP 15-R263DX

Written By: Drake Hort



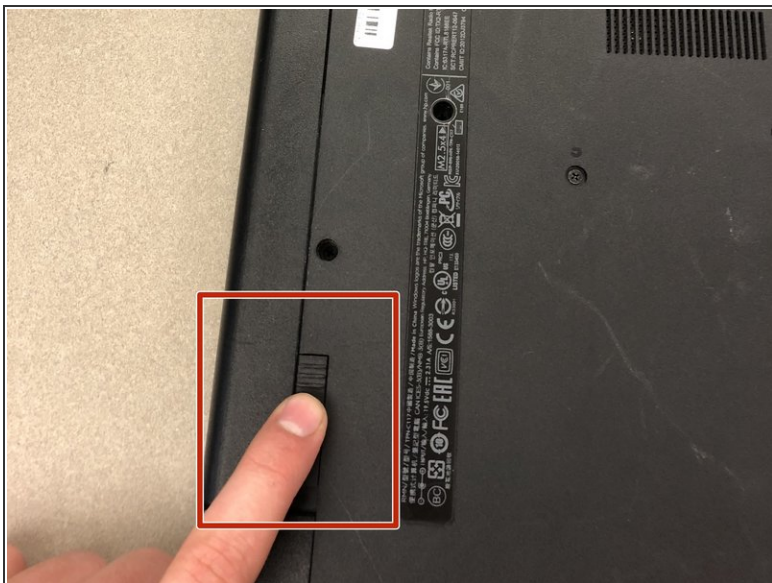
INTRODUCTION

If the computer won't load past the startup screen or randomly crashes during normal operation, there isn't enough RAM or the RAM is damaged and needs replacement.

TOOLS:

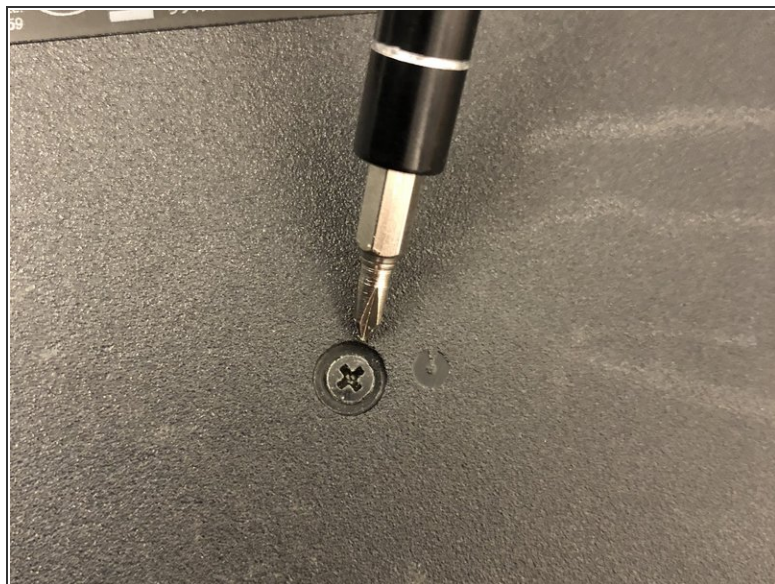
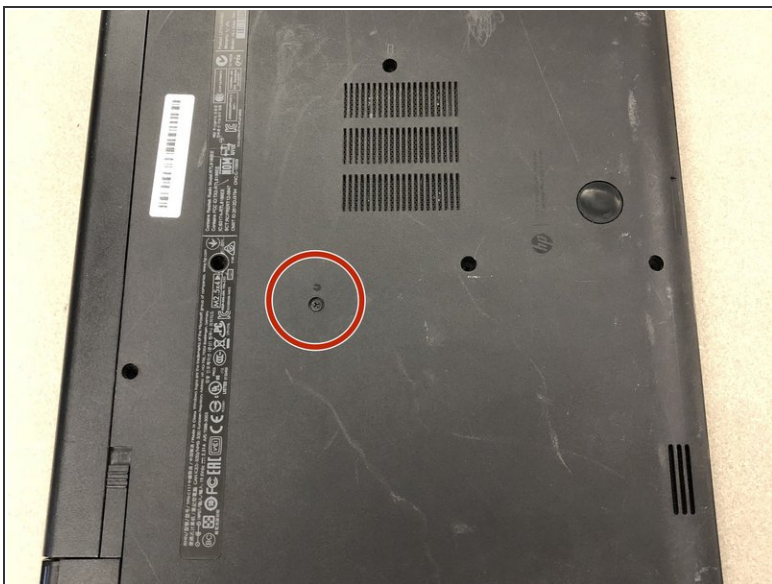
- [Phillips #1 Screwdriver](#) (1)
 - [Spudger](#) (1)
 - [Metal Spudger](#) (1)
-

Step 1 — Battery



- Eject the battery from the computer by sliding the two clips on the bottom of the computer toward the center of the computer.
- Slide the battery out as shown in the picture.

Step 2 — Optical Drive



- Using a Phillips #1 screwdriver, remove the small screw next to the disc engraving shown in the picture.

Step 3



- Gently slide the optical drive out of the side of the computer.

Step 4 — HP 15-R263DX Disassembly



- Locate the two corner grips on the hinge side of the computer.
- Using a metal spudger, remove the two corner grips to reveal the screws.

Step 5



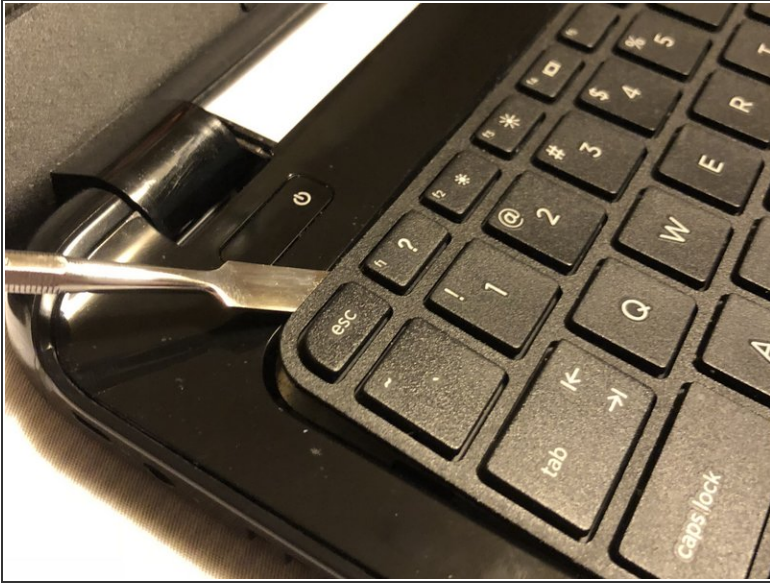
- Remove the 11 small screws on the bottom of the computer that are shown in the picture.


Step 6



- Remove the 2 small screws that are on the bottom side of the disc tray slot.
- ⓘ These screws are shorter and wider than the others.

Step 7



 Once the keyboard is loose, do not immediately pull away from computer. It is attached by the ribbon connector.

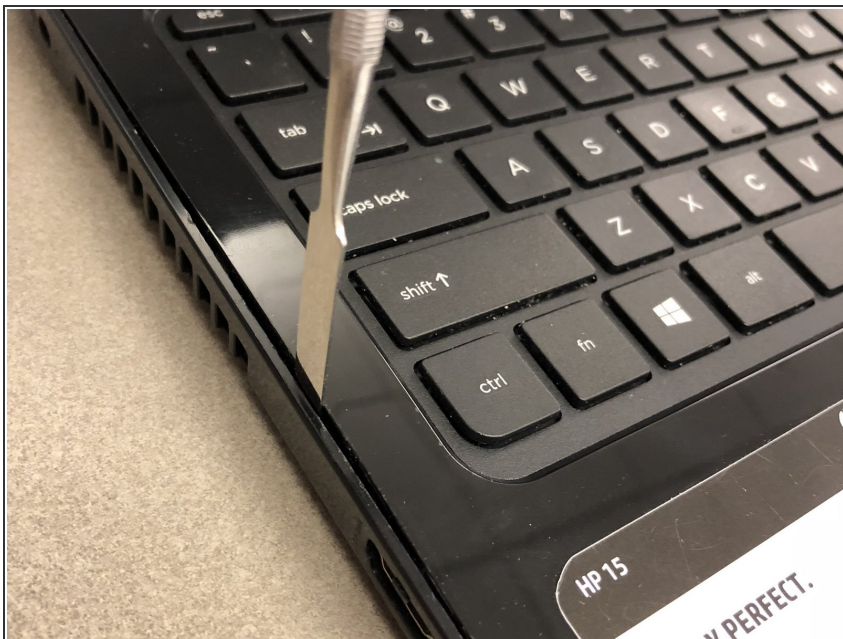
- Using a spudger, pry around the edges of the keyboard until all clips are disengaged and the keyboard is loose from the computer.
- To disconnect the ribbon connector, flip up the black clip shown in the picture.
- Gently pull the ribbon until disconnected.

Step 8



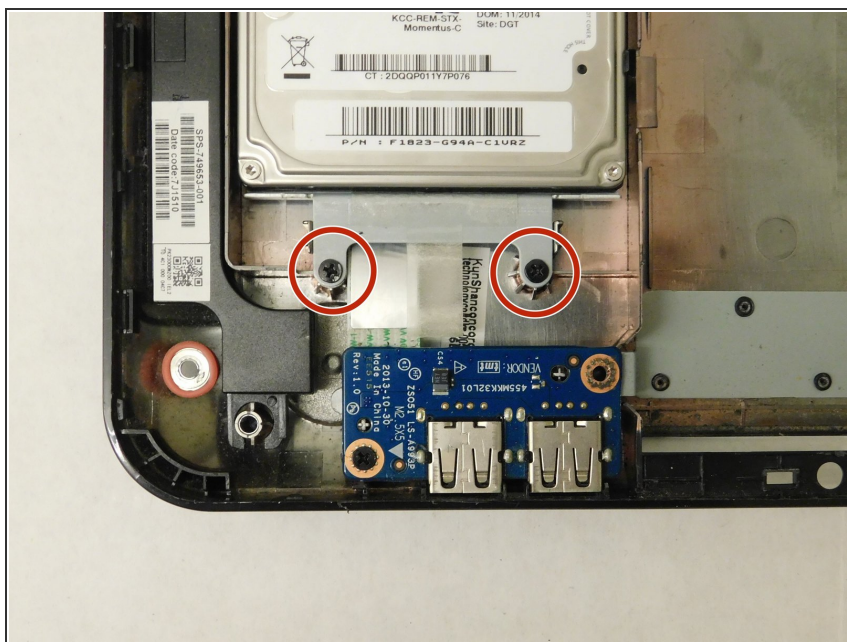
- Disconnect the other two ribbon connectors underneath the keyboard by flipping up the black clips.
- Remove the 4 small screws shown in the picture.

Step 9



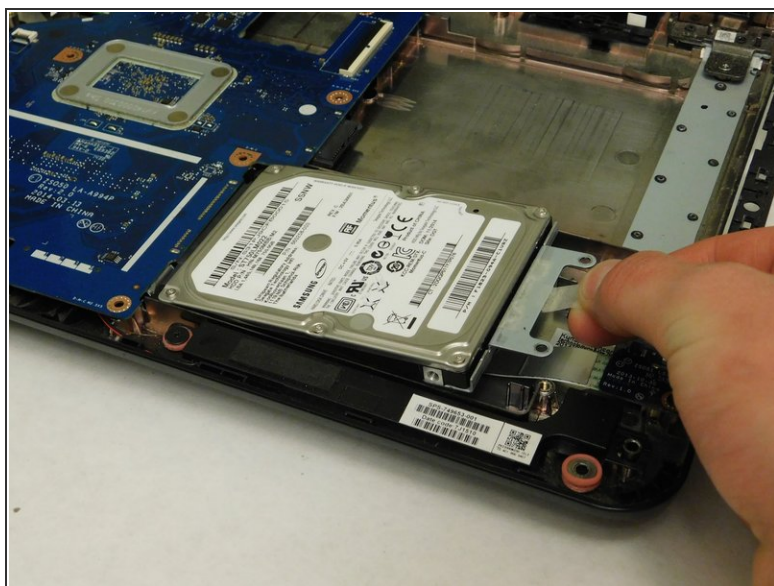
- Disengage the face plate clips by prying the case away from around the outer edge of the face plate with a metal wedge.
- The face plate can then be lifted away from the computer.

Step 10 — Hard Drive



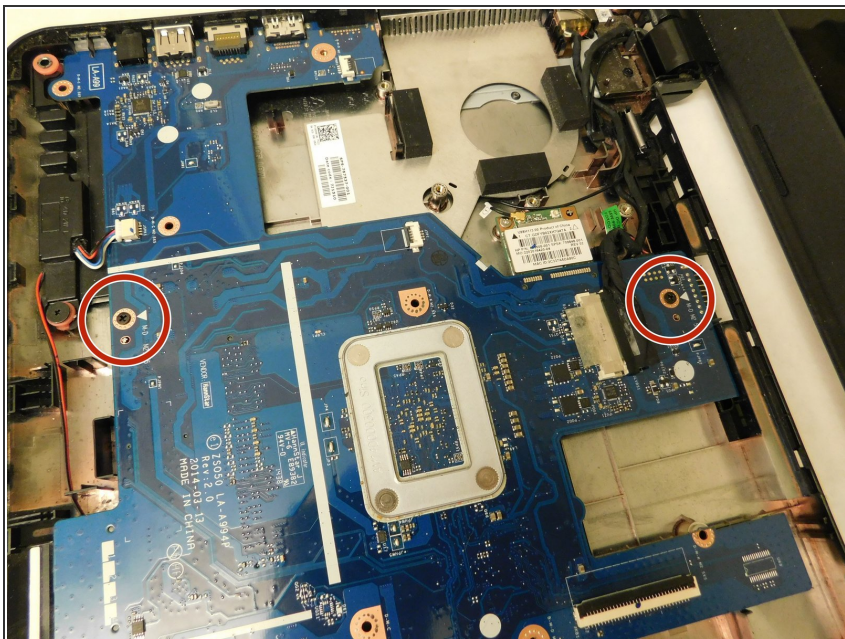
- Remove the 2 black screws holding the hard drive to the computer frame.

Step 11



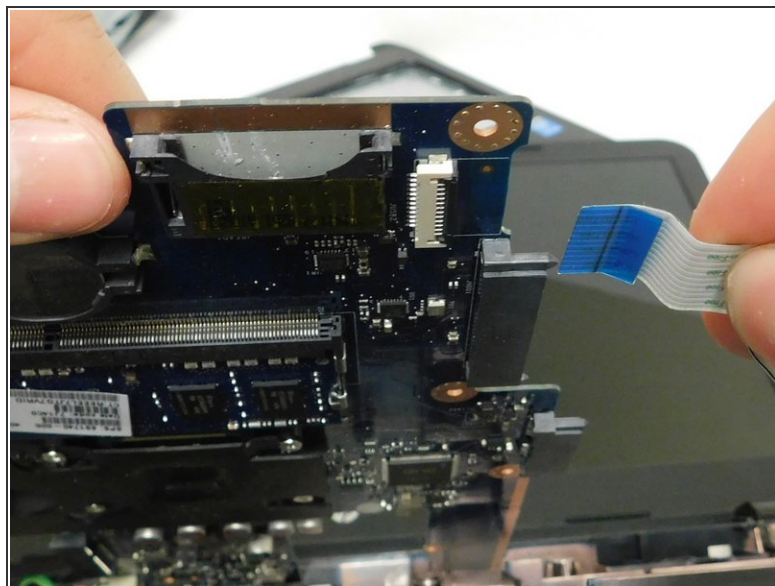
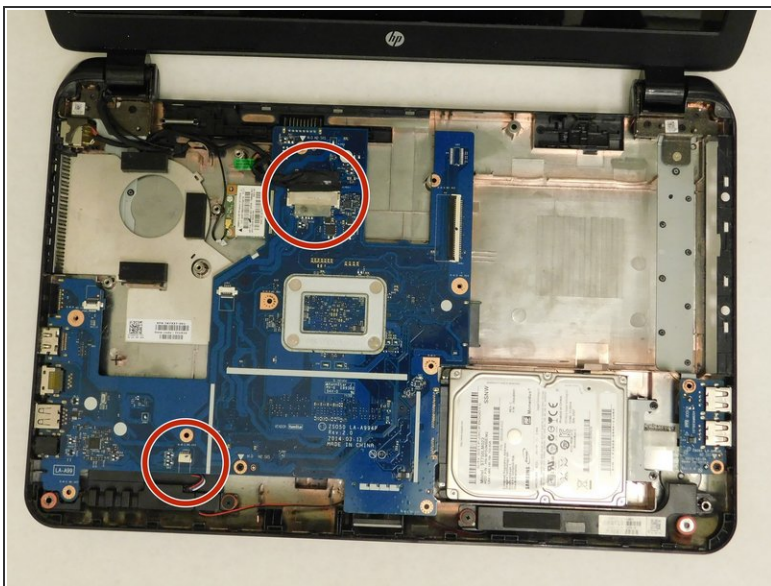
- Gently slide the hard drive away from the motherboard to disconnect it.
- After it's disconnected, lift the hard drive up to remove it from the computer.

Step 12 — RAM



- Remove the 2 screws holding the motherboard into the case of the laptop.

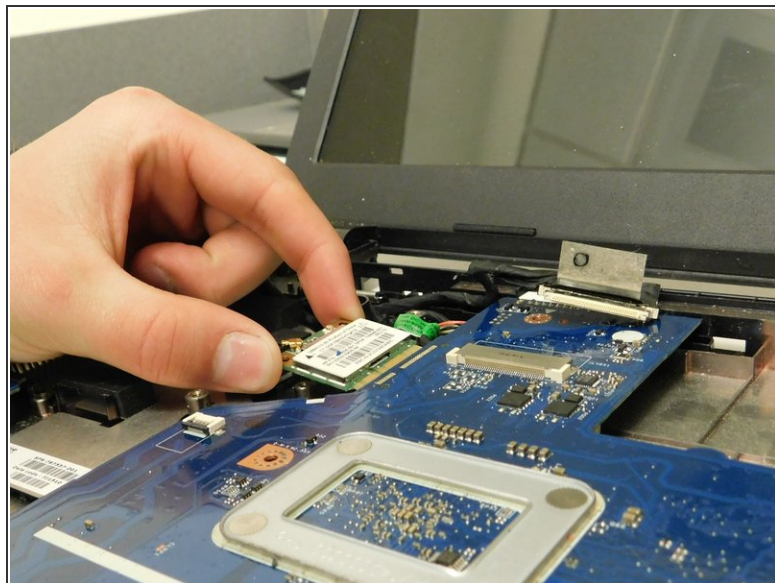
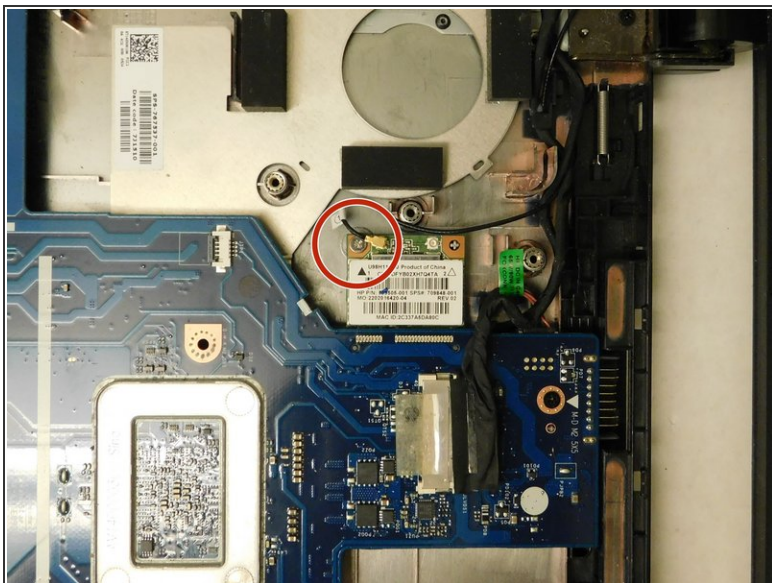
Step 13



- Remove the connections around the motherboard.

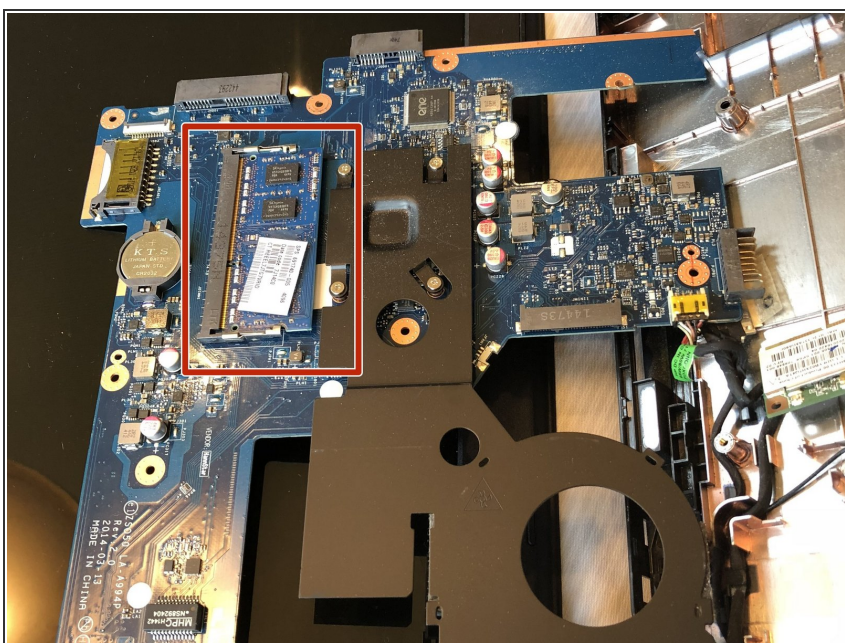
- ⓘ There is a connection hidden underneath the board. Remove this one last as you will need to lift the motherboard up to access it.

Step 14



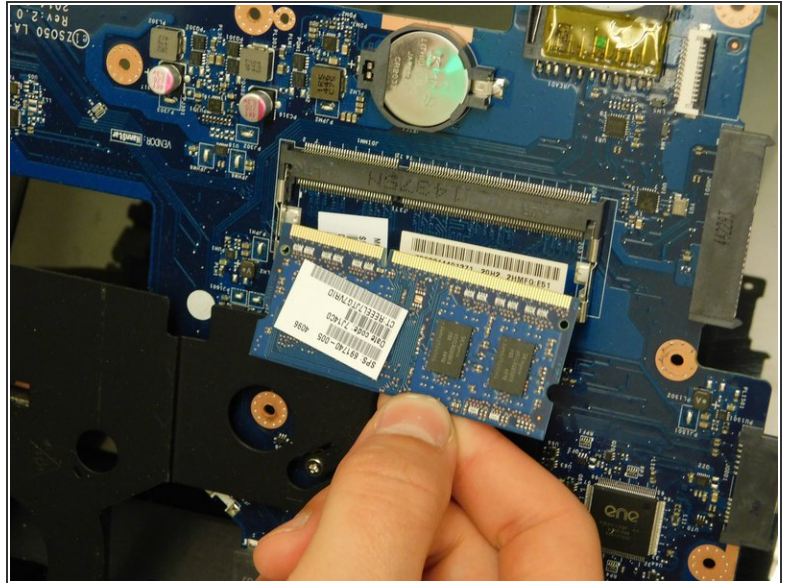
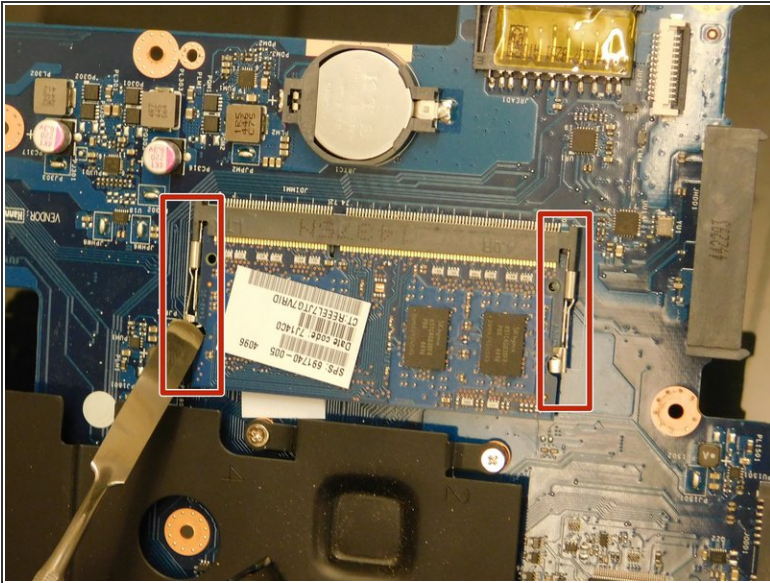
- Remove the screw holding the WiFi chip in place.
- Slide the chip away from the motherboard and set it elsewhere inside the computer.

Step 15



- Flip the motherboard over to access the underside revealing the RAM.

Step 16



- Remove the RAM chip by simultaneously prying the 2 spring clips away from the RAM.
- ⓘ The RAM will pop up when both clips are completely released.

To reassemble your device, follow these instructions in reverse order.