



HP 15-ac121dx Wifi Card Replacement

The guide provides a step-by-step process for the replacement of the Wifi card on an HP 15-AC121DX.

Written By: Daniel Adams





TOOLS:

- [iFixit Opening Tools](#) (1)
- [Phillips #000 Screwdriver](#) (1)
- [Metal Spudger](#) (1)

Step 1 — Battery



- Remove all external devices from the computer.
- Remove the charging cord from the computer.

Step 2



- Turn off the computer by holding the power button.

Step 3



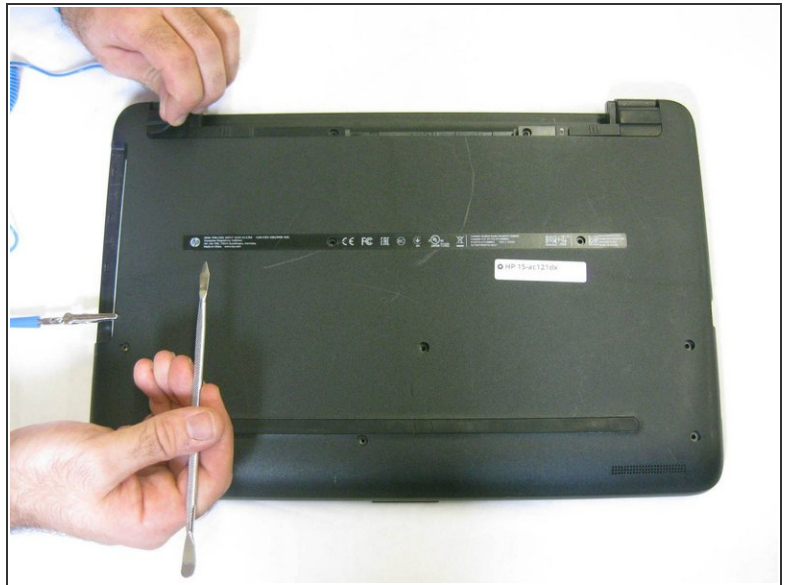
- To remove the battery, slide the left slider on the back to the unlocked position.

Step 4



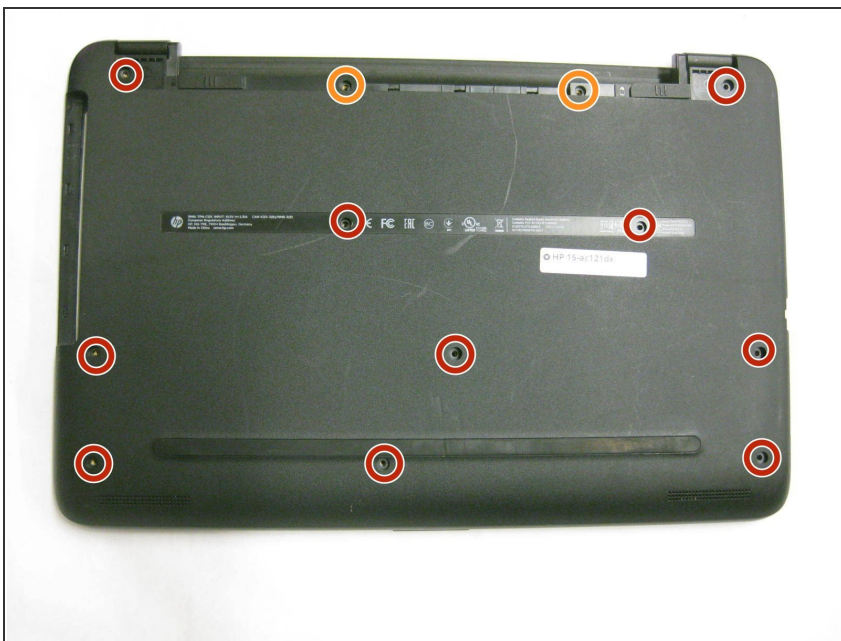
- Push the right slider inwards.
- Remove the battery out by pulling straight out and to the right.

Step 5 — Back Panel



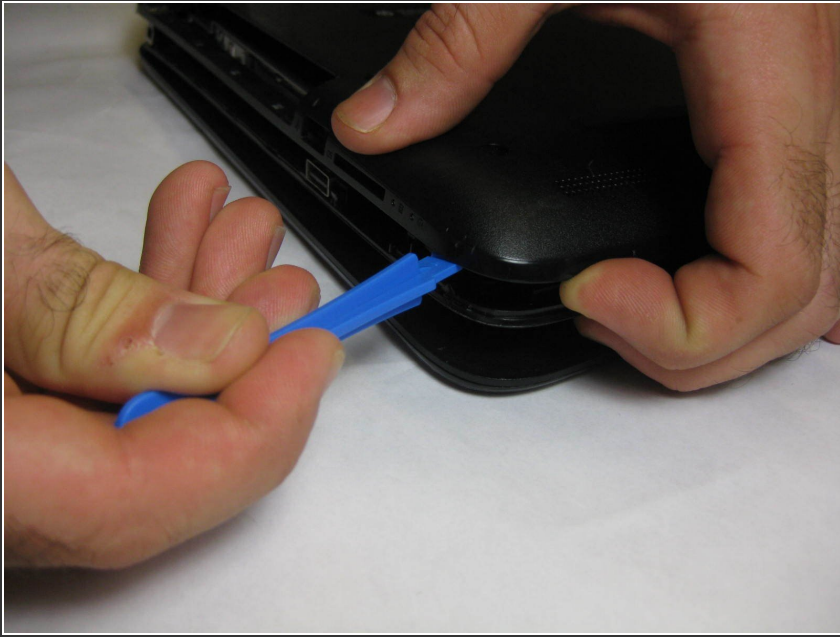
- Place the laptop with the back panel facing up and the battery compartment facing away from you.
- Using a spudger, carefully remove the rubber feet on both sides of the battery compartment.

Step 6



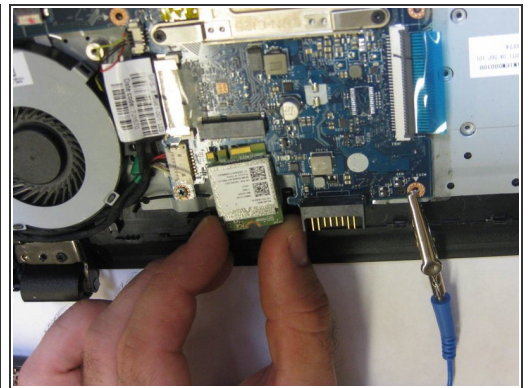
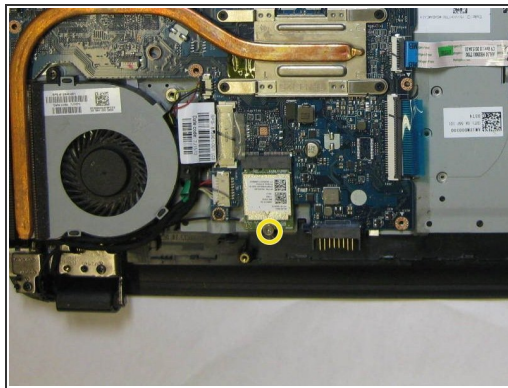
- Using a Phillips #000 screwdriver, remove the ten 7mm screws on the back panel.
- Using the same screwdriver, remove the two 5mm Phillips #000 screws on both sides of the battery compartment.

Step 7



- With the same orientation as the previous step, locate the bottom left corner.
- Using a plastic opening tool, carefully pry off and remove the back panel.

Step 8 — Wifi Card



- With the back panel removed, orient the laptop with the fan located in the bottom left corner.
- Locate the Wifi card.
- Using a Phillips #000 screwdriver, remove the 2mm screw securing the Wifi card in place.
- Carefully remove the Wifi card.

To reassemble your device, follow these instructions in reverse order.

