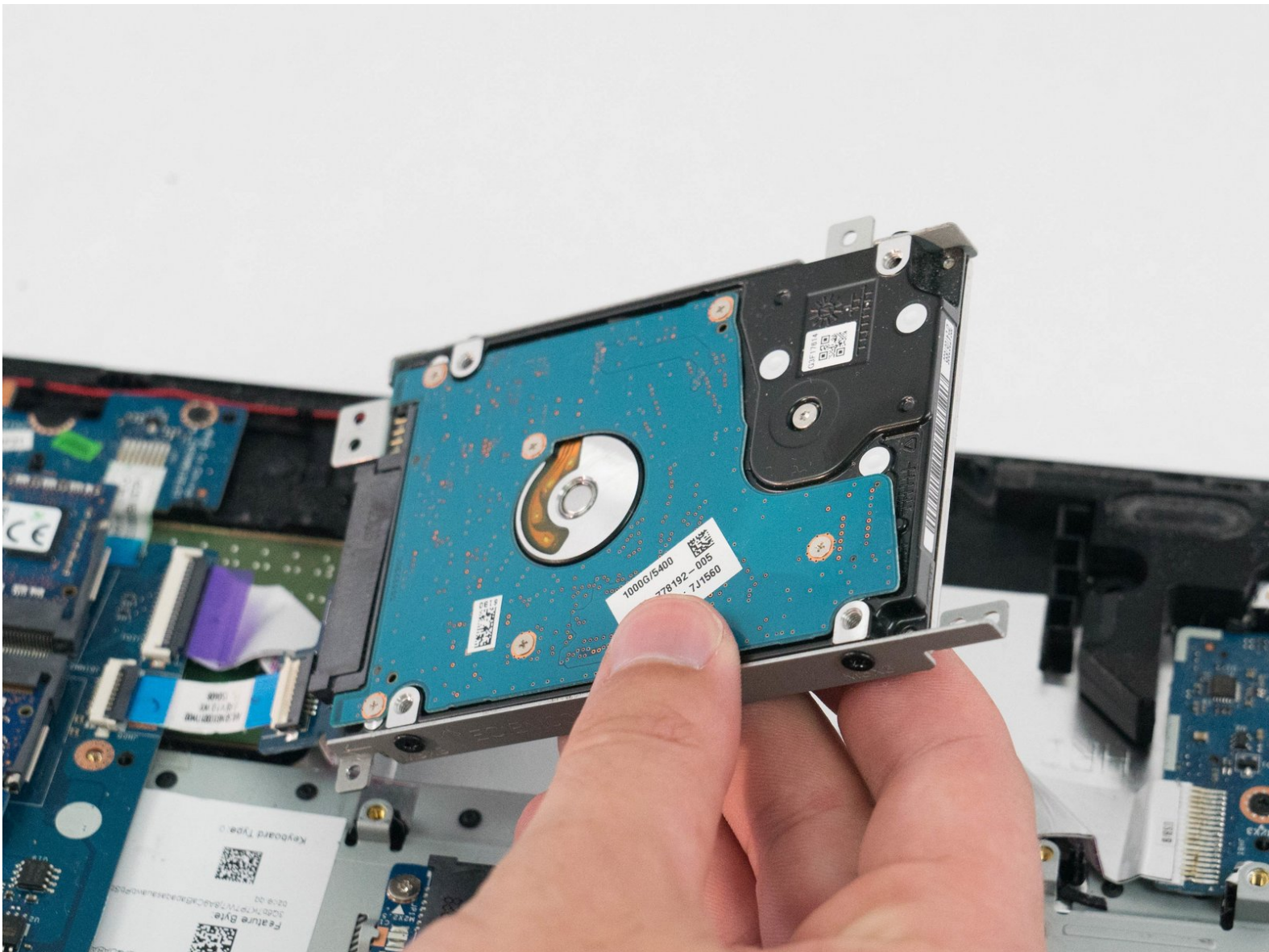




HP 15-af013cl Hard Drive Replacement

Replace the hard drive in your HP laptop if you are experiencing abnormally slow performance or constant disk checks.

Written By: Stephen Perreira



INTRODUCTION

The hard drive is one of the more common computer components to fail. Hard drives typically fail without warning, oftentimes leaving you with lost data and time. However, in many cases, hard drives tend to make clicking noises or abnormal vibrations when they are close to kicking the can. Learn how to replace your hard drive using this guide in order to restore the functionality of your HP laptop.



TOOLS:

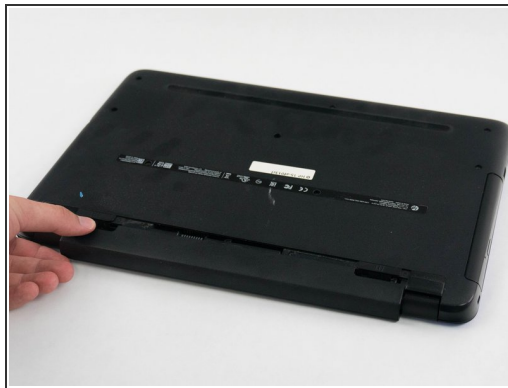
- [Phillips #0 Screwdriver](#) (1)
-

Step 1 — Battery



- Start off by flipping the laptop on its back.

Step 2



- Push the two spring-loaded tabs inward.
- Once unlatched, pull the battery out of its compartment.

Step 3 — Hard Drive



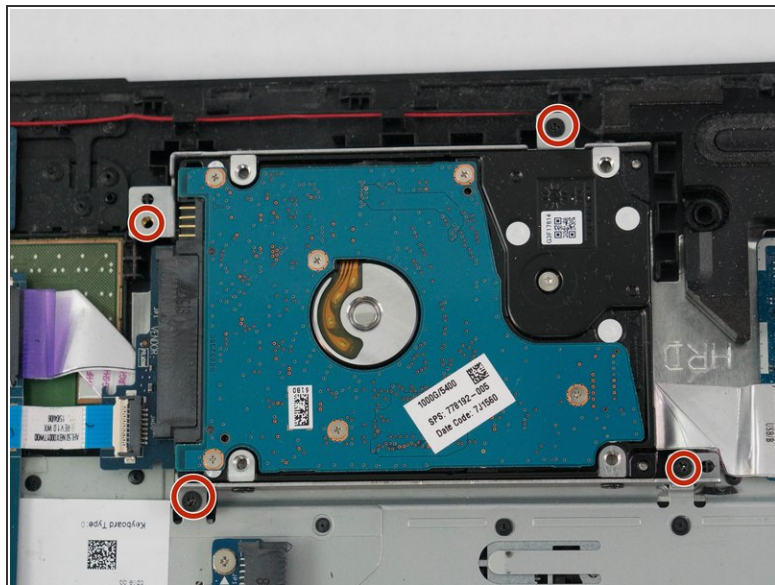
- Using the Phillips P0 screwdriver, remove the 9 M2.5mm x 6.5mm screws from the bottom of the laptop.
- Remove the additional 2 M2.0mm x 1.5mm Phillips screws located in the battery compartment.

Step 4



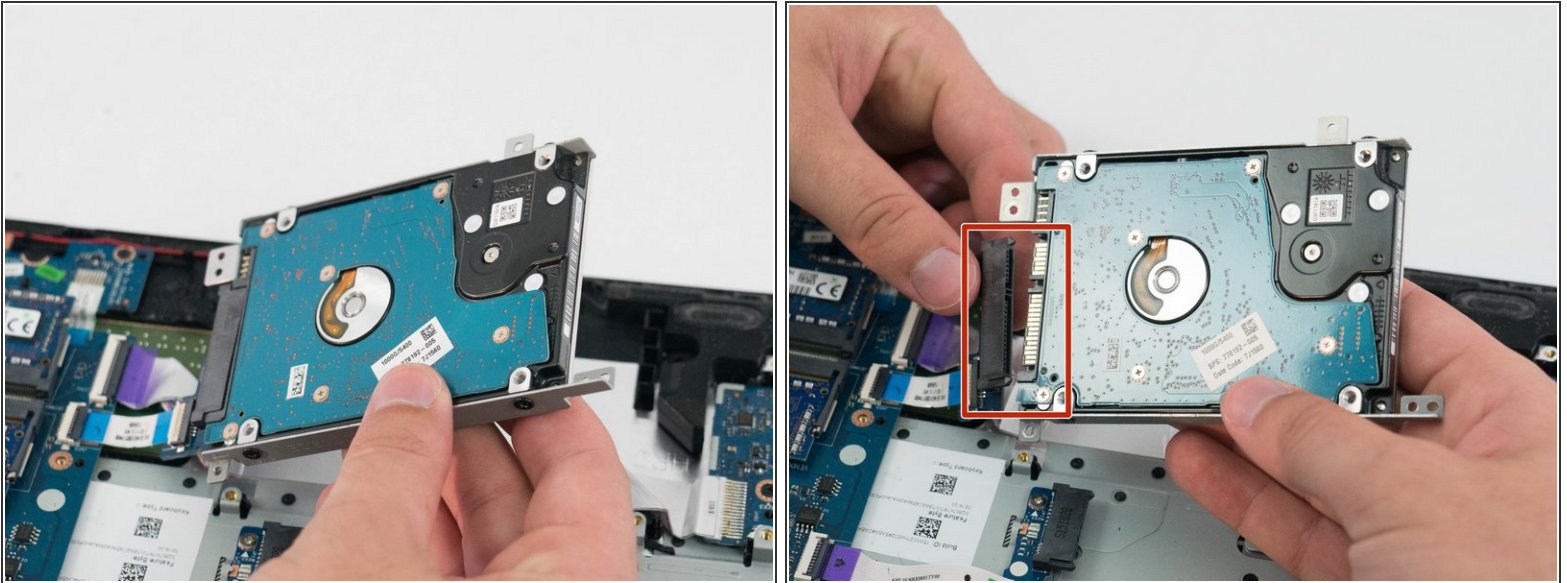
- Remove the optical disk drive from the side of the laptop.

Step 5



- Lift off the bottom cover, exposing the motherboard and other components underneath.
- Unscrew the four Phillips 3.0mm x 3.5mm screws on the hard drive bracket using the PH0 screwdriver.

Step 6



- Gently lift the hard drive from its position on the inside of the laptop.
- Disconnect the ribbon cable from the hard drive.

To reassemble your device, follow these instructions in reverse order.