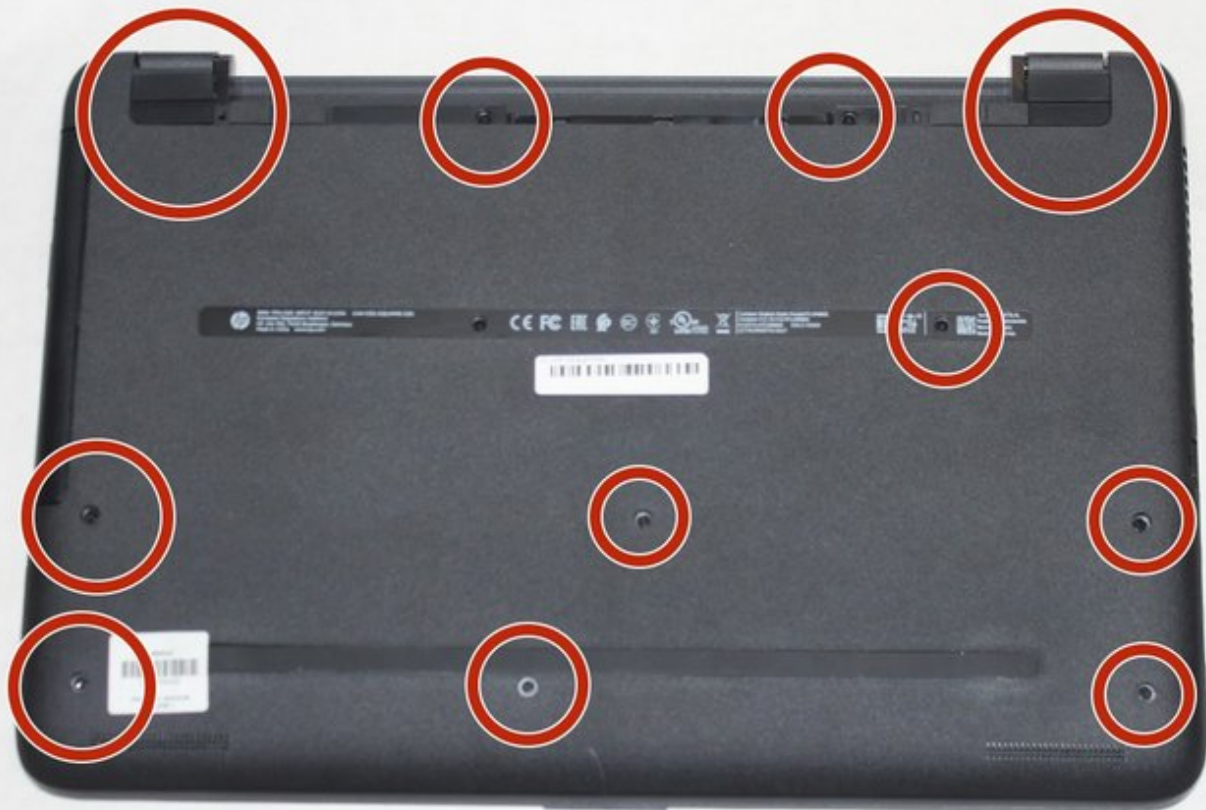




# HP 15-ay014dx Wireless Card Replacement

Wireless card removal and replacement for HP 15-ay014dx

Written By: Drake Scoville



---

## INTRODUCTION

This guide will show you how to take the wireless card out of your HP 15-ay014dx laptop.




### TOOLS:

- [Phillips #00 Screwdriver](#) (1)
-

## Step 1 — Battery



 Disconnect device from power source and power down.

## Step 2



- With the device turned upside down, use your index fingers to push the battery latches in towards each other.

### Step 3



- **i** The latch on your left will stay at the inward position, while the latch on the right will slide back out.
- Gently grasp the battery and pull it back away from the device and yourself.

### Step 4 — Optical Drive



- Close the laptop and lay it down with the bottom facing up.
- Using a size #00 Phillips screw drive remove the screw holding in the optical drive.

## Step 5



- Grip the optical drive and gently pull it out.

## Step 6 — Wireless Card



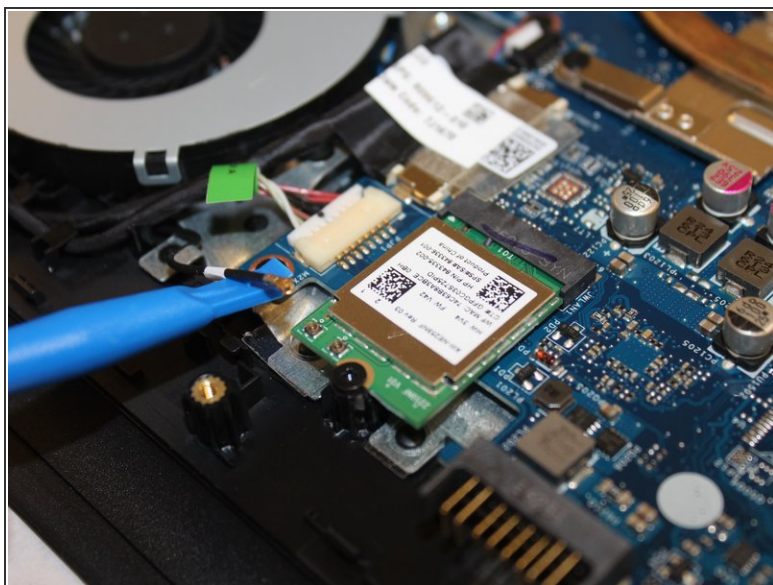
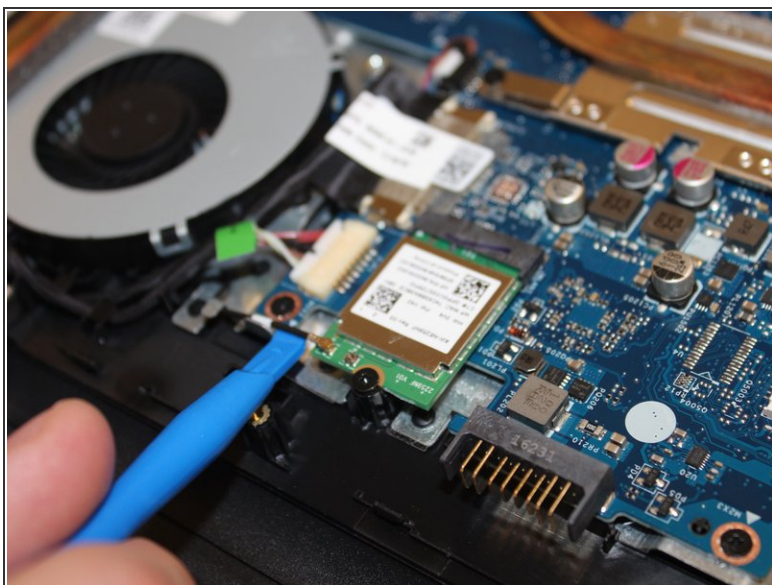
- Remove the 11 screws holding the body of the laptop together with a size #00 Phillips screwdriver.

## Step 7



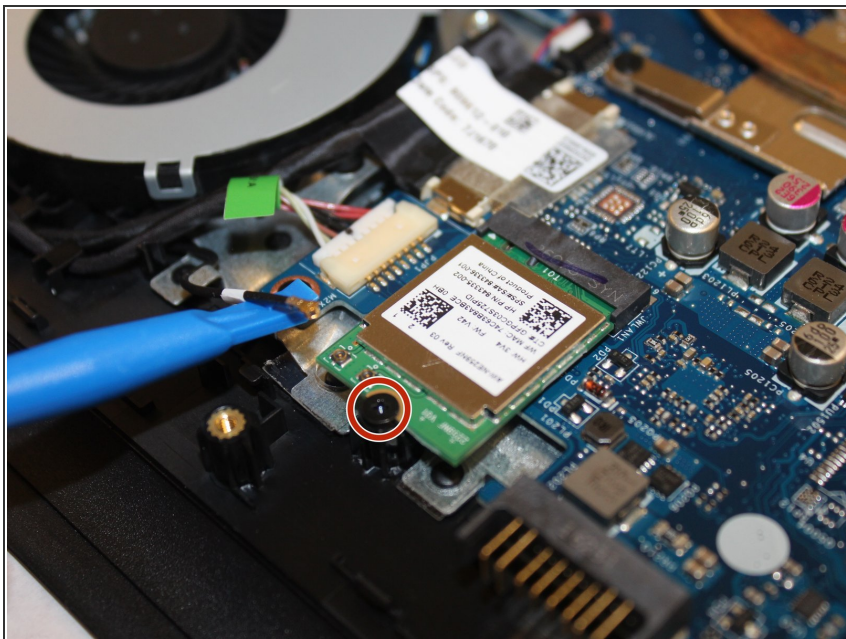
- Using the spudger, push in the tabs in the back that hold the body together. Carefully pry the body apart by working the spudger around the body.

## Step 8



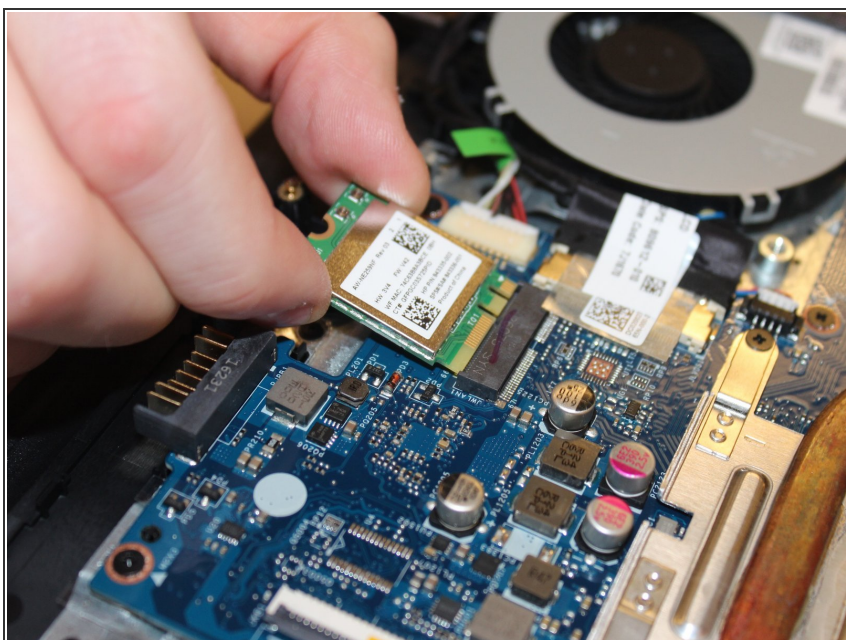
- Using the spudger, carefully pry the wire connecting the wireless card to the motherboard off of it.

## Step 9



- Using the size #00 Phillips screwdriver remove the single screw holding it in place.

## Step 10



- carefully pull the card of its slot.

To reassemble your device, follow these instructions in reverse order.