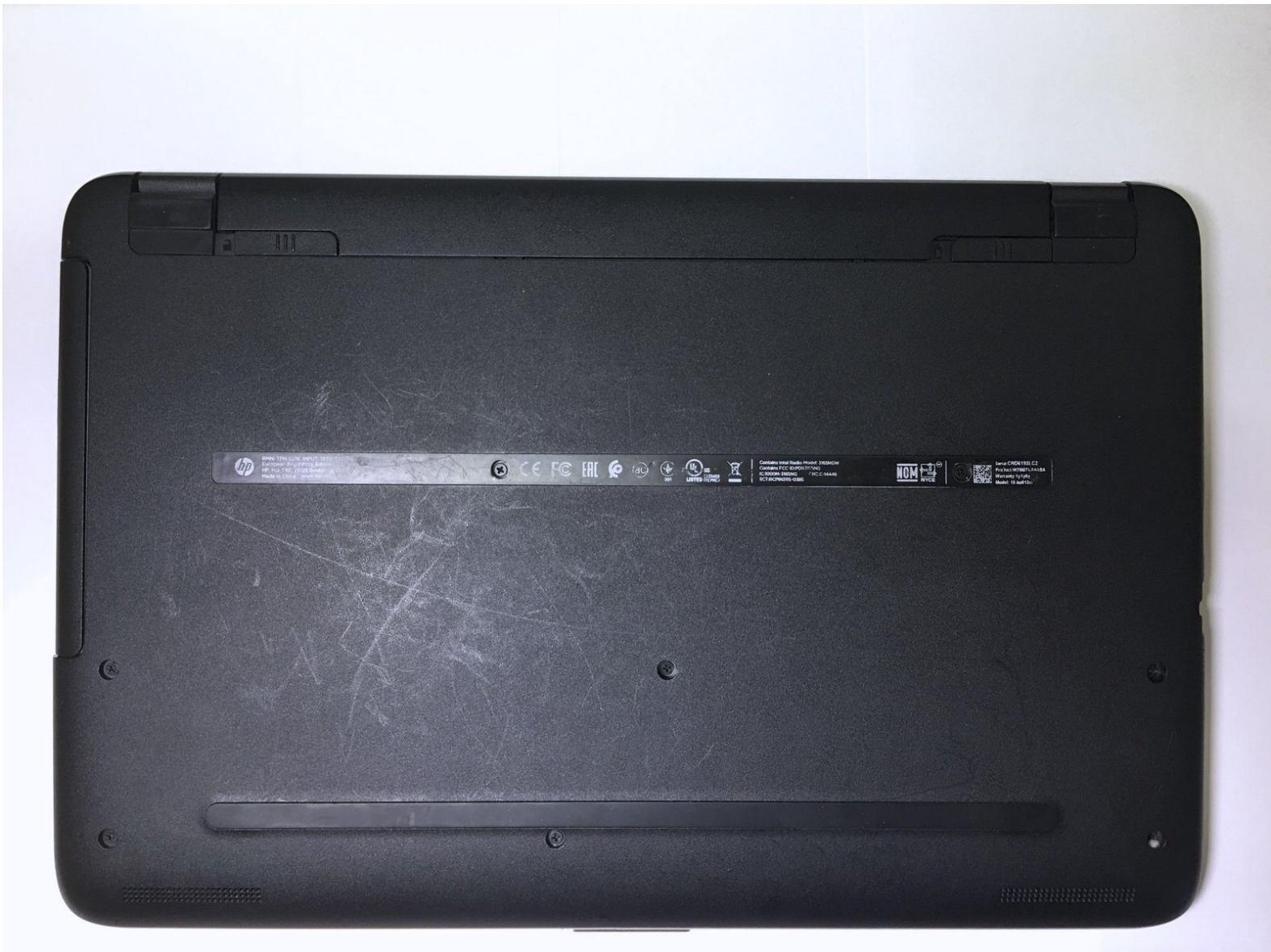




HP 15-ba013cl Hard Drive Replacement

HP 15-ba013cl notebook (Product Number W2M87UA)

Written By: Joe Severino



INTRODUCTION

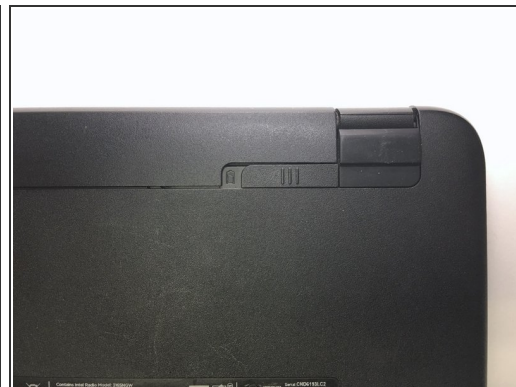
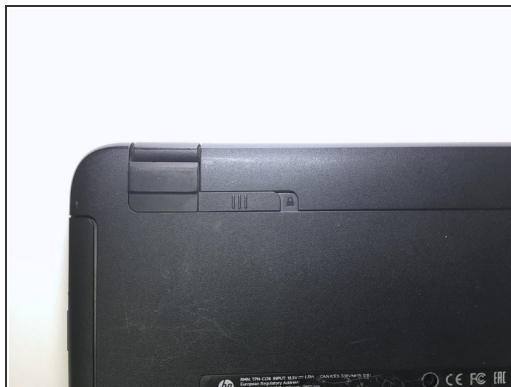
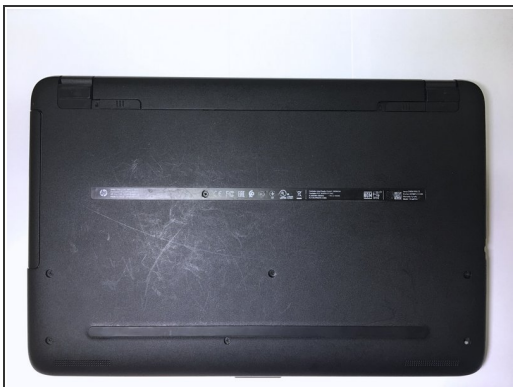
Use this guide to replace a dead hard drive.



TOOLS:

- [Spudger](#) (1)
 - [iFixit Opening Tools](#) (1)
 - [Phillips #1 Screwdriver](#) (1)
 - [Phillips #0 Screwdriver](#) (1)
-

Step 1 — Remove Battery



- Use Latch on the left to unlock the battery
- Use Latch on the right to eject the battery

Step 2 — Remove Case Screws



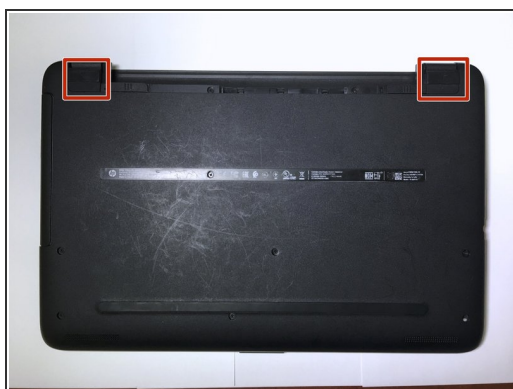
- Remove case screws
- Ten 8mm Phillips #1

Step 3 — Remove Optical Drive



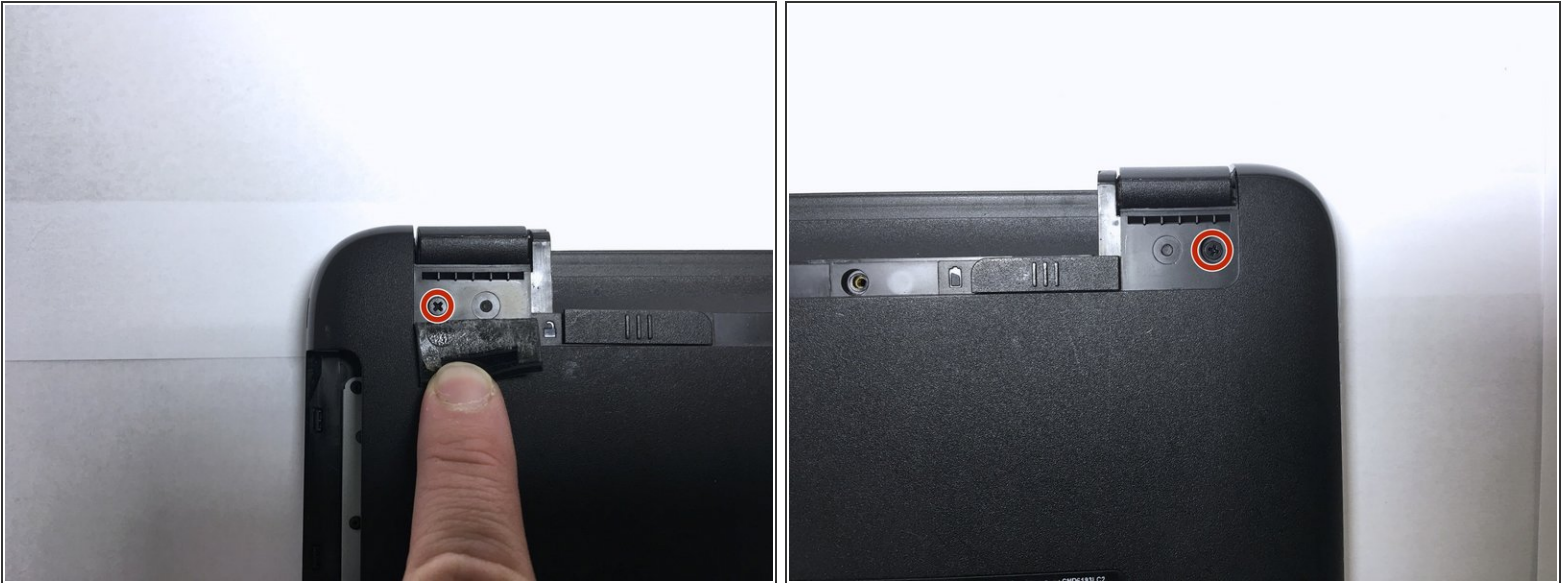
- Use prying tool to remove optical drive

Step 4 — Remove Rubber Feet



- Use Uspudger to remove left and right rubber feet

Step 5 — Remove Screws Under The Rubber Feet



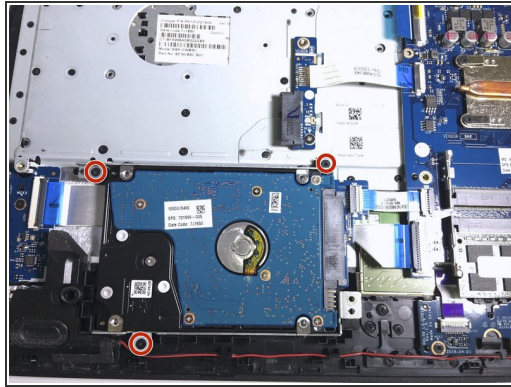
- Remove the screws located beneath both rubber feet.
 - Two 8mm Phillips #1

Step 6 — Remove Bottom Of The Case



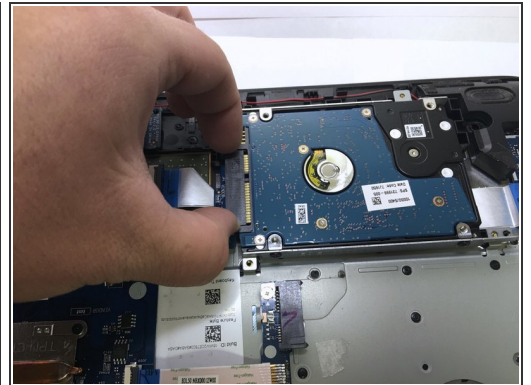
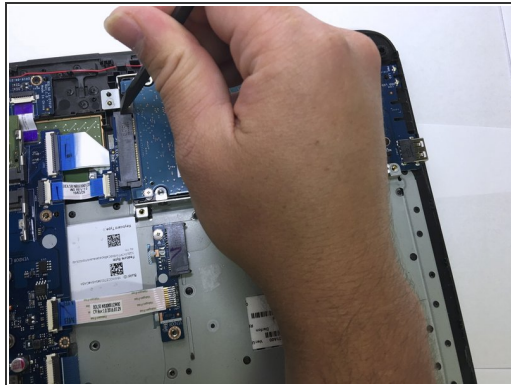
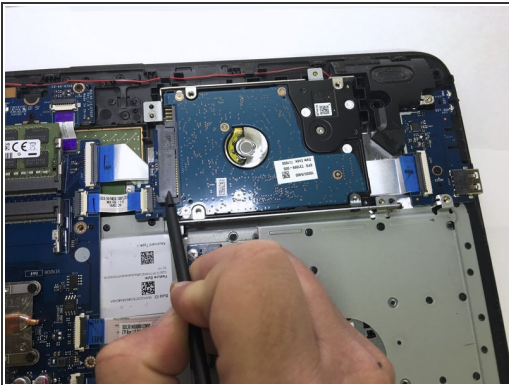
- Use the prying tool to remove the bottom case.
 - ⚠ Careful to not damage the clips that hold the bottom case on.
 - 💡 I found it easier to start on the opposite side of the hinges.

Step 7 — Remove Hard Drive Bracket



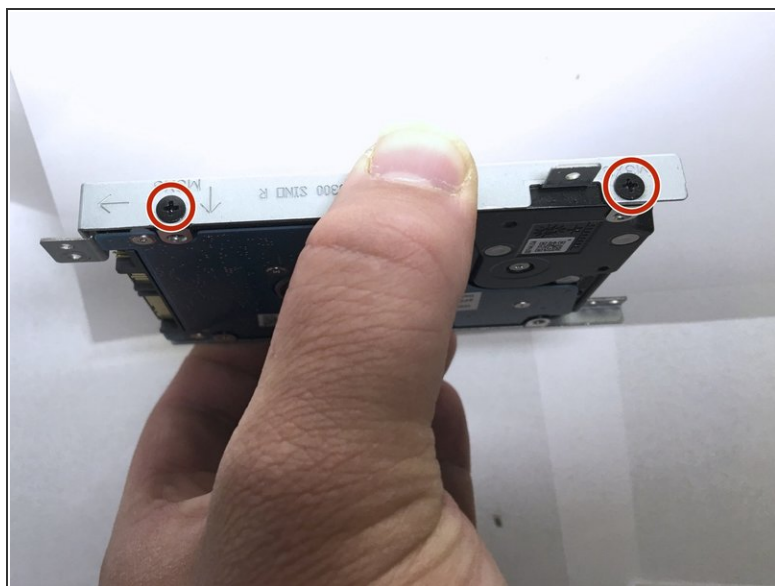
- Remove screws securing the hard drive bracket
 - Three 3mm Phillips #0

Step 8 — Disconnect Hard Drive



- Use spudger to loosen the SATA connector then disconnect the cable and remove the hard drive.

Step 9 — Remove Bracket From Hard Drive



- Remove bracket screws from the hard drive.
 - Four 3mm Phillips #1
- ☑ Make sure, when reassembling, to orient the hard drive correctly in the brackets.

To reassemble your device, follow these instructions in reverse order.