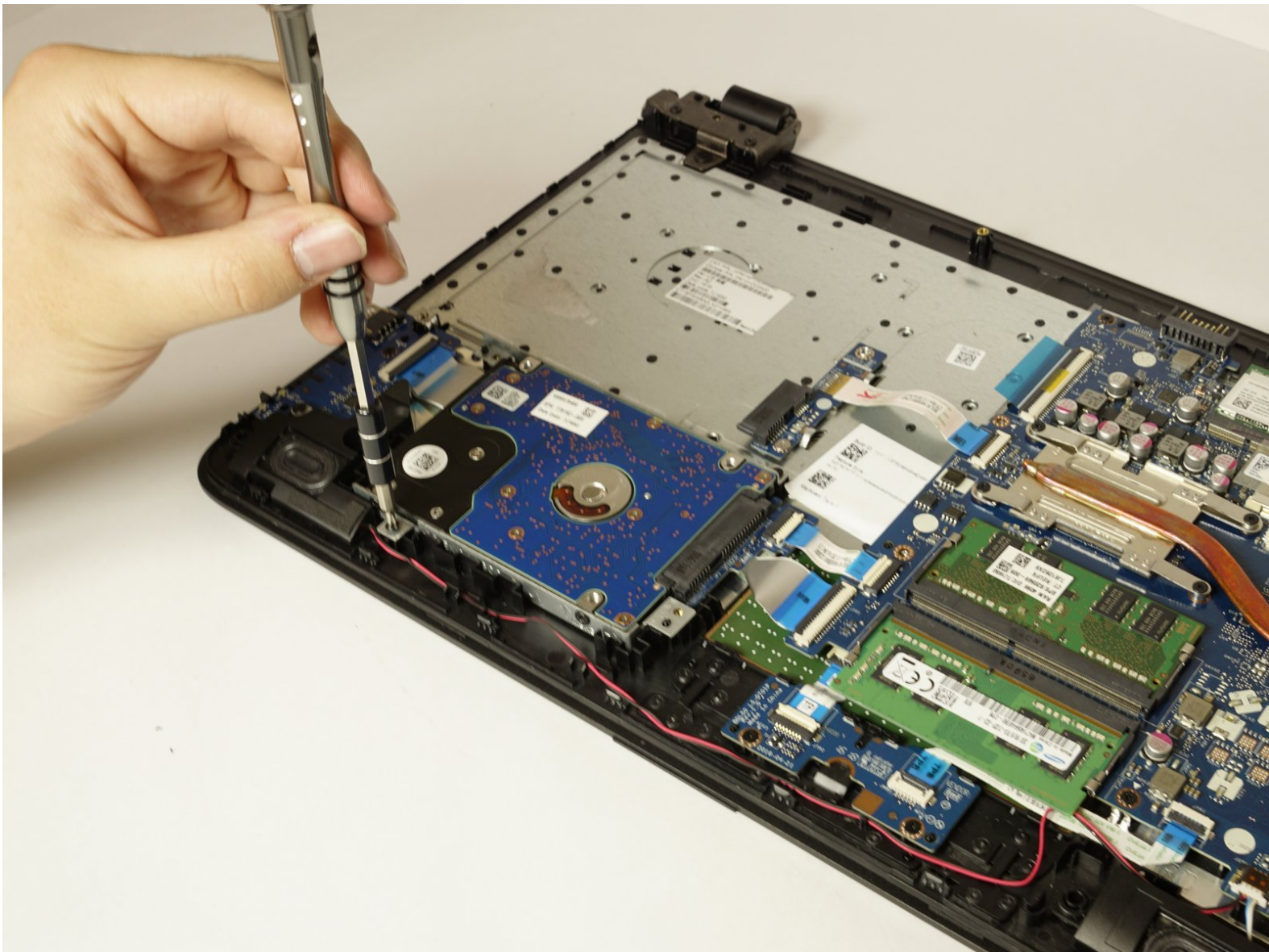




# HP 15-ba0709dx Hard Drive Replacement

Removing hard drive so replacement part can be installed.

Written By: Lydia Brown



## INTRODUCTION

Follow this guide to replace the hard drive on HP 15-ba0709dx laptop. This repair may be needed if your computer is showing the symptoms such as freezing, slowing down, or corrupting files.

---

### TOOLS:

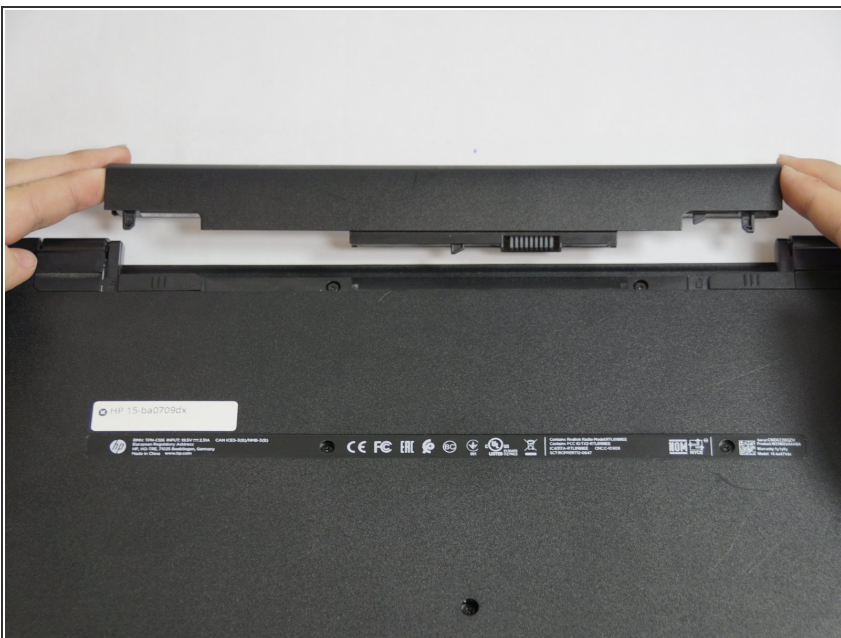
- [iFixit Opening Tools](#) (1)
  - [Phillips #1 Screwdriver](#) (1)
-

## Step 1 — Battery



- Flip the device over and locate the battery compartment.
- Slide the battery release latch on the left and right side until the battery is detached from its slot.
- A noticeable pop will be heard when the battery is fully released.

## Step 2



- Pull the battery out of its slot.
- ⚠ Be careful not to damage any of the connectors in the process.

## Step 3 — Back Cover



- Place the laptop on a clean, flat surface with the bottom side facing up.

## Step 4



- Using a Phillips Head Screwdriver, remove the screws anchoring the bottom casing.
- ⓘ **Note:** Make sure to keep track of the screws once they have been removed.

## Step 5



- Locate the screws about 1 inch from the battery release tabs and use a Phillips Head Screwdriver to remove these screws.
- ⓘ **Note:** Place these newly removed screws with the ones removed in Step 2.

## Step 6



- Locate the rubber friction pads on the top corners of the laptop. Pry the pads from the laptop and place them off to the side
  - Removing the friction pads will reveal two more anchoring screws.
- i Note:** The adhesive keeping the pads on the laptop will weaken once doing this, but it is necessary to removing the bottom cover of the laptop.

## Step 7



- Remove disc reader.

**i Note:** If all screws are removed it should slide out easily.

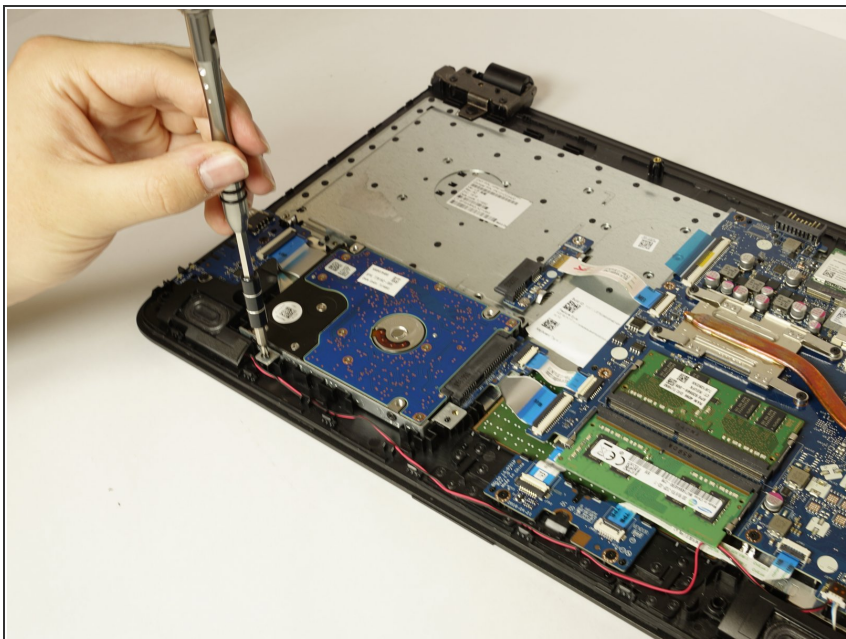
## Step 8



- Use a plastic prod to pry the back cover off the laptop.

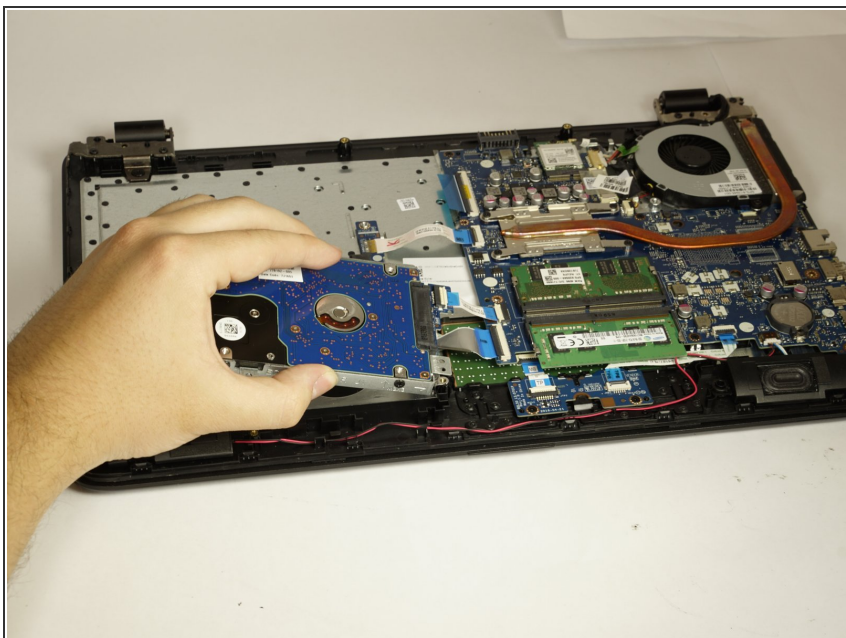
**⚠** Be careful not to damage the laptop while prying.

## Step 9 — Hard Drive



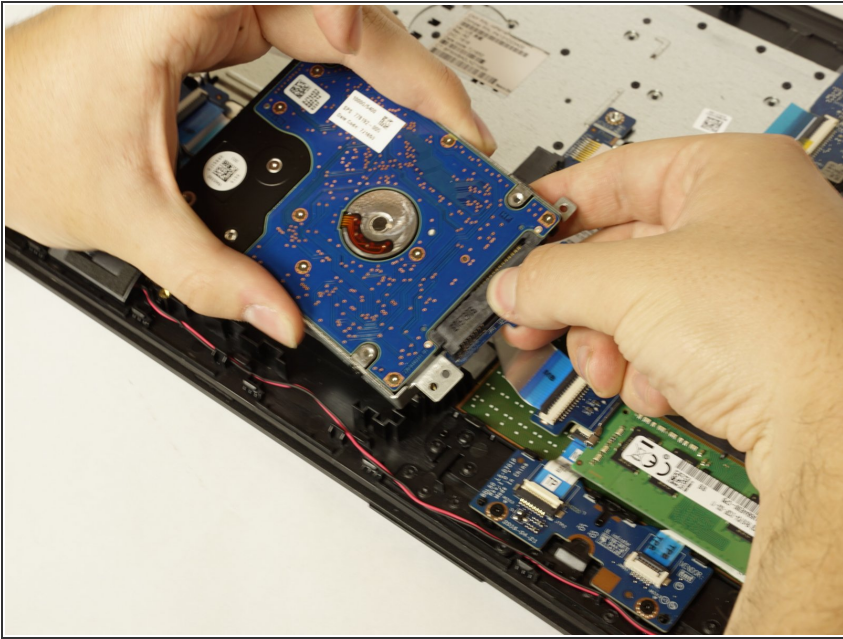
- Locate the square, blue hard drive
- Unscrew the two screws holding it in place using a Philips screwdriver head, PH1. The screws will be 8 mm long with a 4 mm width head.

## Step 10



- Lift the hard drive out of its slot after screws are removed.

## Step 11



- Squeeze to release and pull adapter cable from the side of hard drive.

⚠ Be careful not to damage the adapter.

To reassemble your device, follow these instructions in reverse order.