



HP 15-d076nr Wireless Card Replacement

Replace a broken or malfunctioning wireless card on the HP 15-d076nr to restore wireless connection.

Written By: Gabrielle Farren



INTRODUCTION

This guide details how to replace the wireless card on an HP 15-d076nr. If your laptop does not connect to the internet properly, this may be the guide for you.

TOOLS:

- [Phillips #0 Screwdriver](#) (1)
 - [Phillips #1 Screwdriver](#) (1)
 - [Spudger](#) (1)
-

Step 1 — Battery



- Orient the laptop upside down so that the back of the laptop, where the battery is located, faces you.
- Locate the left and right switches at the bottom of the laptop.

Step 2



- Move the right switch to the left so that the orange unlock symbol is showing.

Step 3



- Move the left switch to the right, covering the battery symbol, and hold.

Step 4



- While holding the left switch in place, slide the battery towards you and away from the laptop.

Step 5 — Wireless Card



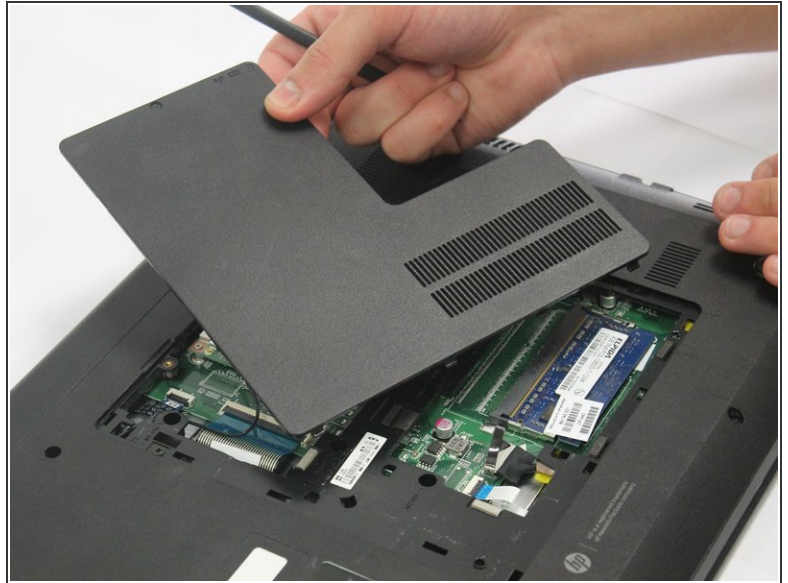
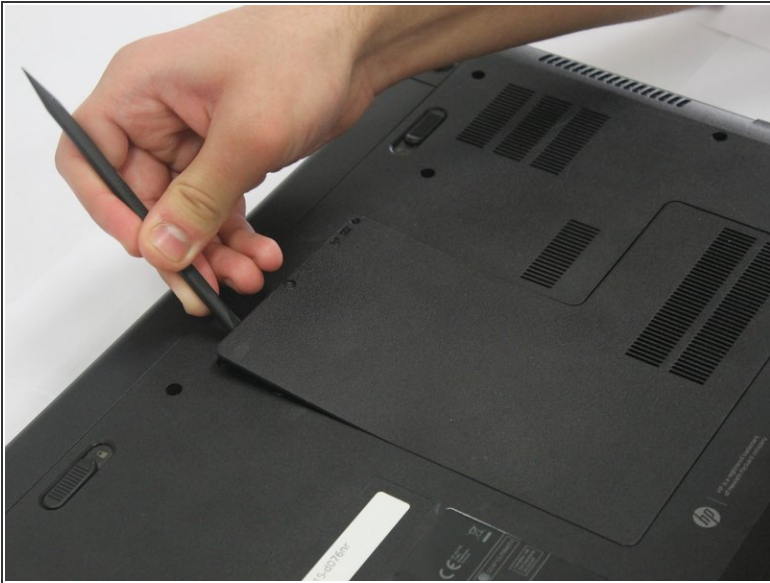
- Re-orient the laptop, so that the back of the laptop faces away from you.

Step 6



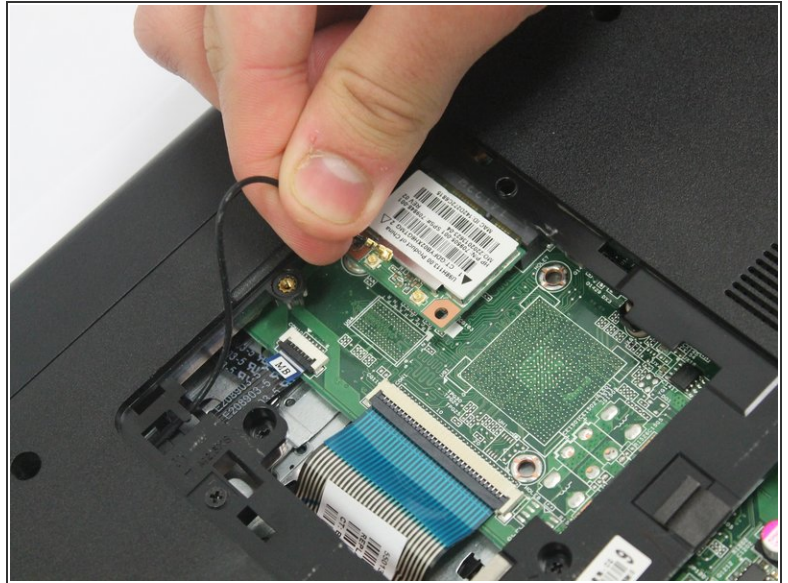
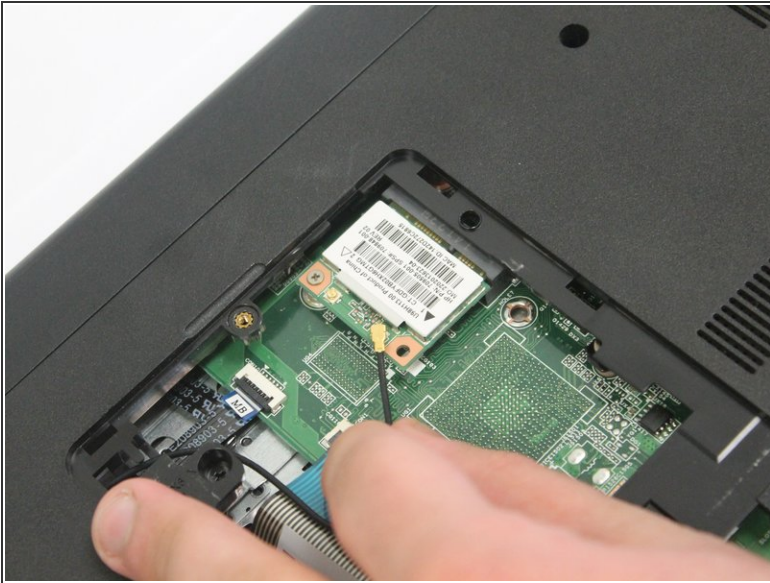
- Locate the small screw on the panel at the center of the laptop.
- Loosen the small screw using a Philips # 1 screwdriver.
- ⓘ The screw does not come free from the panel. It only needs to be loosened enough so that the panel can be lifted/pried.

Step 7



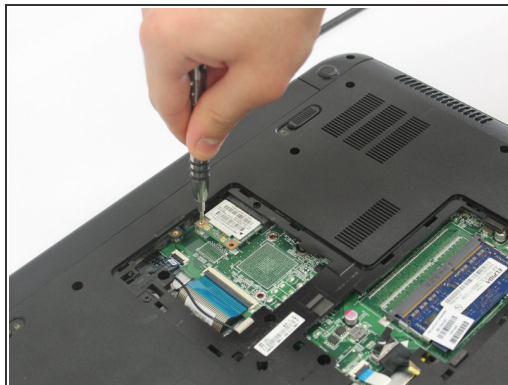
- Carefully pry the middle panel up using a plastic spudger, or other prying tool .
- Pull the panel away from the laptop and set it off to the side.

Step 8



- Gently wiggle and lift the black antenna wire away from the wireless card.
- i** If there is also a white wire attached, both black and white wires will need to be removed from the wireless card.

Step 9



- Locate the Phillips 2.0x3.0mm screw on the upper left corner of the wireless card.
- Carefully remove the 2.0x3.0mm screw using a Philips #0 screwdriver.

Step 10



- Slide the wireless card to the left to remove it from the socket.

To reassemble your device, follow these instructions in reverse order.