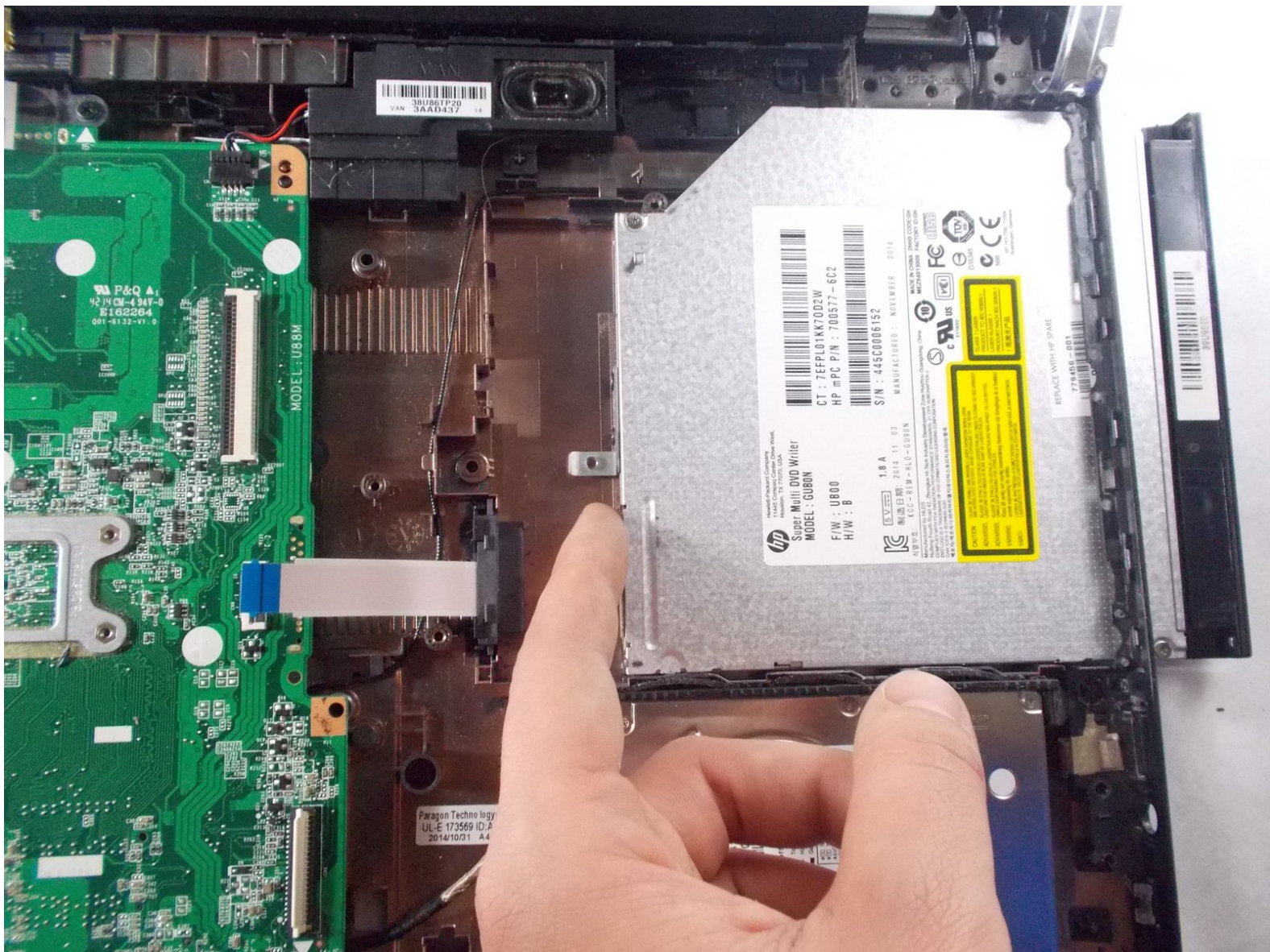




HP 15-f033wm CD Reader Replacement

How to replace the CD drive on a HP 15-f033wm.

Written By: Aaron Chabot



INTRODUCTION

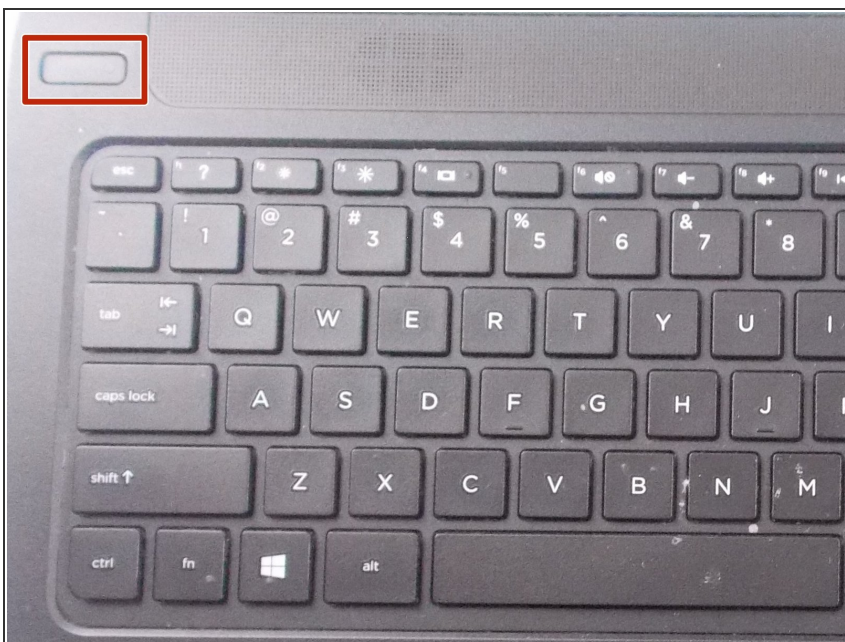
In the case that your CD reader is not processing the information embedded on the discs, follow this repair guide on replacing your CD reader.



TOOLS:

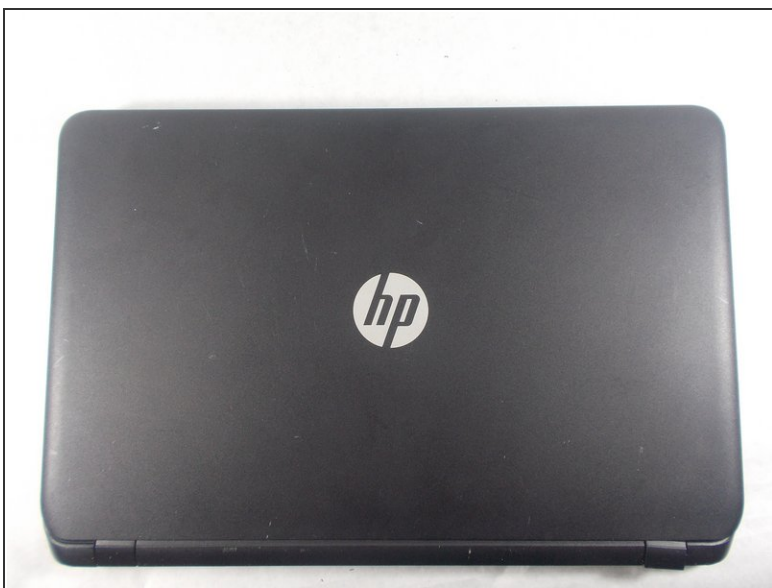
- [Spudger](#) (1)
 - [Phillips #1 Screwdriver](#) (1)
-

Step 1 — Battery



- Turn power off using the power button located in the top left corner of the keyboard. Press and hold the power button for 3 seconds until it turns off.

Step 2



- Close the laptop and flip it over so that the HP cover logo is on the underside of the laptop.

Step 3



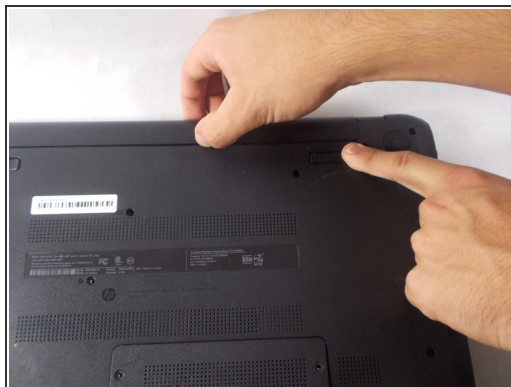
- Locate the battery and the two switches that release the battery when they are unlocked.

Step 4



- Slide the left switch to the right so that the icon of a locked padlock is no longer visible and the icon of an unlocked padlock is now visible.

Step 5



- With your left hand, slide the right switch to the left and hold it in place. This will unlock the battery and allow you to easily slide it out of its port.
- While holding the switch in place, use your right hand to gently remove the battery from its port.

Step 6 — Palm Rest Disassembly



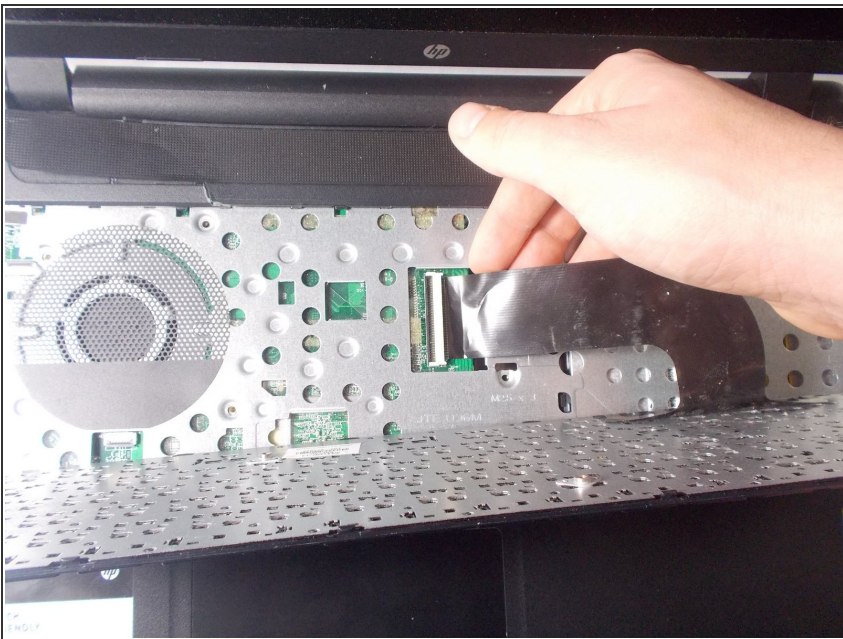
- Remove the thirteen 7 mm PH1 Phillips head screws from the bottom of the laptop.

Step 7



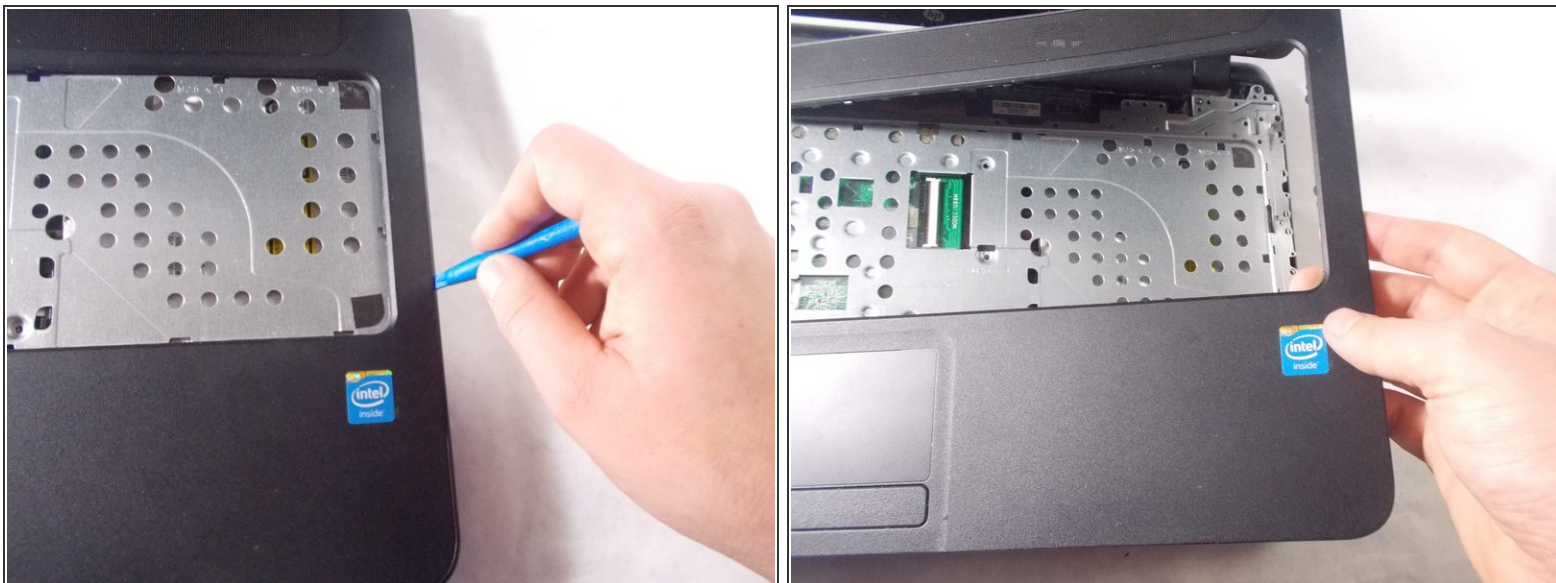
- Pry up and detach keyboard.

Step 8



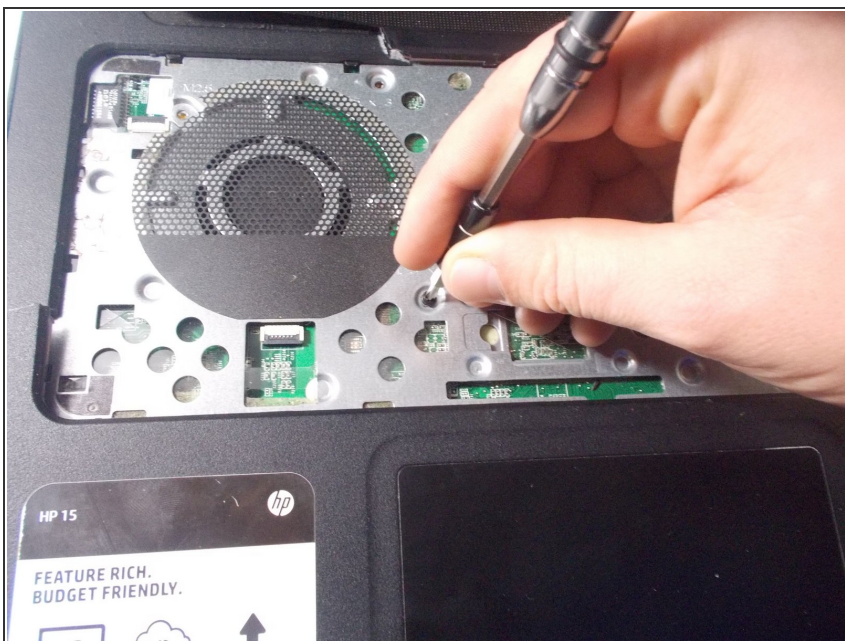
- Remove the keyboard connection from the laptop by flipping up the black tab on the ZIF connector.

Step 9



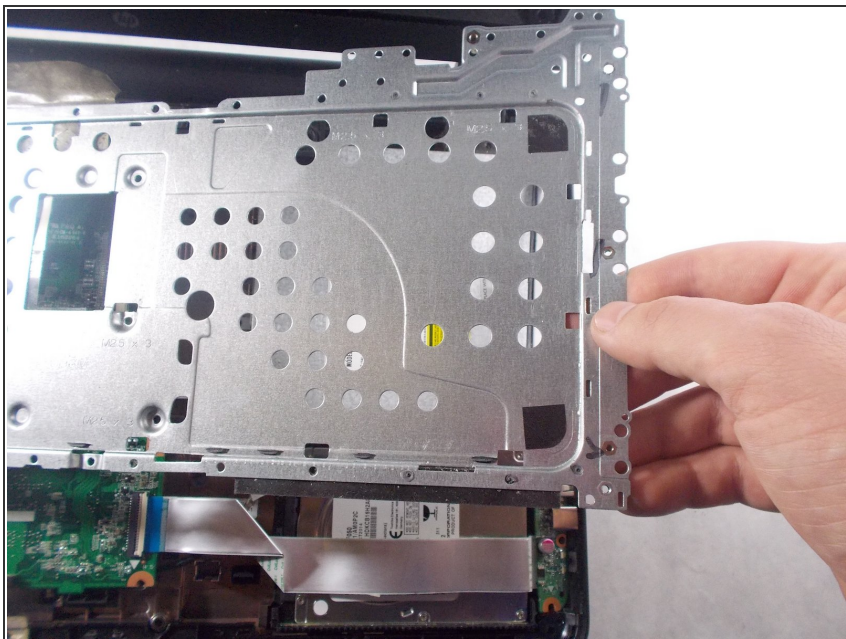
- Remove the palm rest using the blue spudger tool.

Step 10



- Remove the five 3 mm PH1 Phillips head screws underneath keyboard.

Step 11



- Remove metal keyboard underlayment.

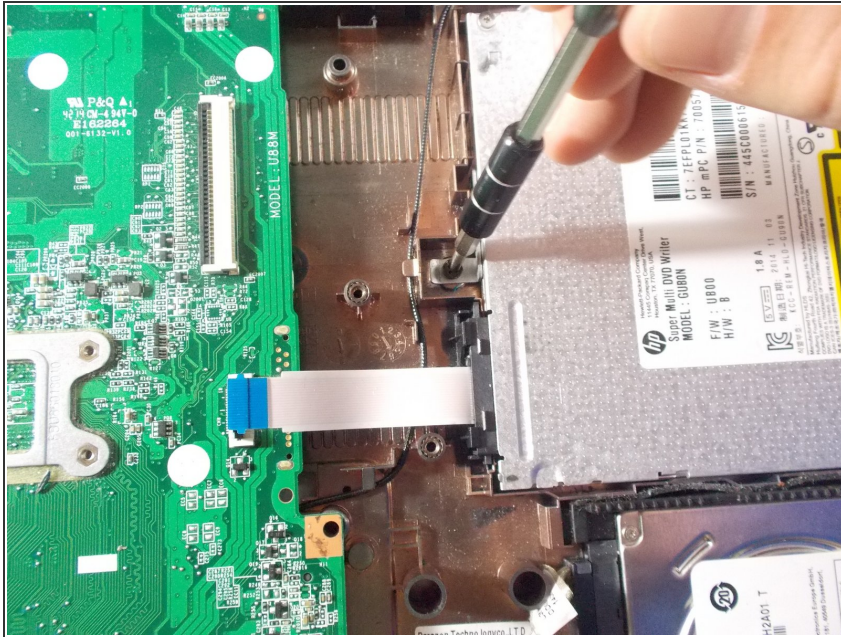
Step 12 — CD Reader



- Remove metal bar on top of the CD drive. Do this by removing 3 mm PH1 Phillips head screw that is just

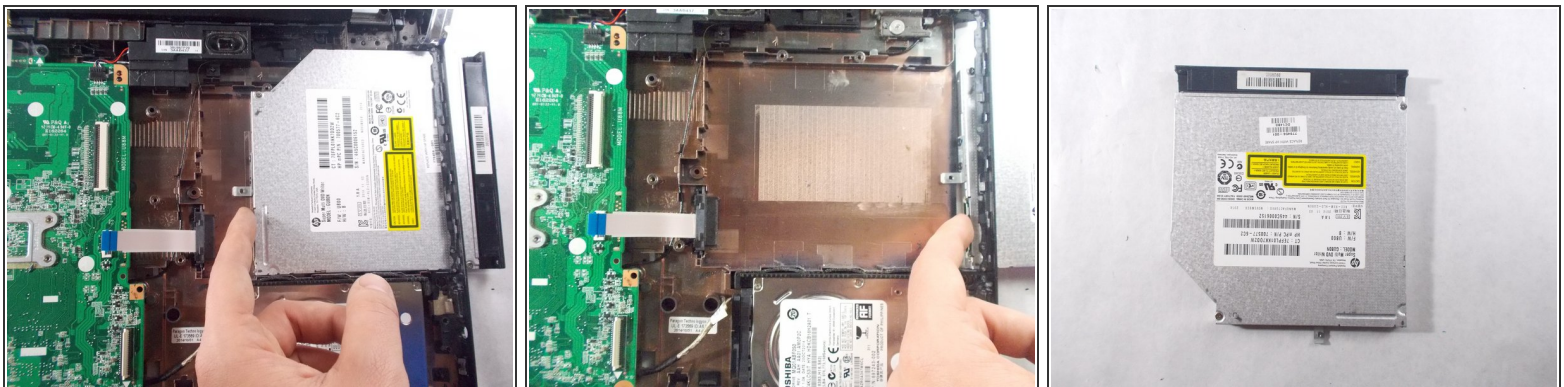
below the bottom right corner of CD drive.

Step 13



- Remove the 3 mm PH1 Phillips head screw that is just to the left of the CD drive.

Step 14



- Carefully push the CD drive from its left side out of the laptop.

To reassemble your device, follow these instructions in reverse order.