



HP 15-f033wm Power Jack Replacement

How to remove the power jack on a HP 15-f033wm laptop.

Written By: Aaron Chabot



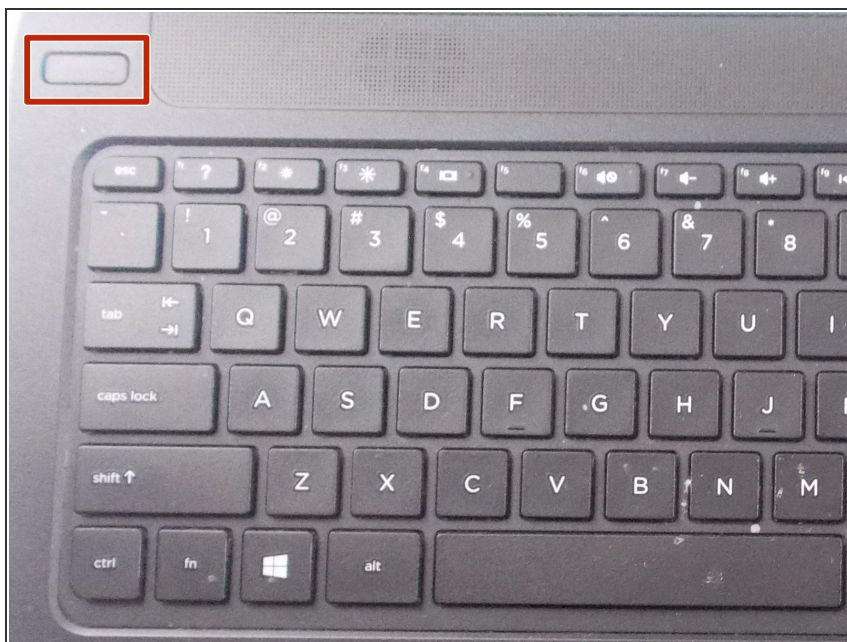
INTRODUCTION

In the case that the laptop does not respond to the adapter being plugged in, the power jack may be faulty. Follow this guide to replace the power jack.

TOOLS:

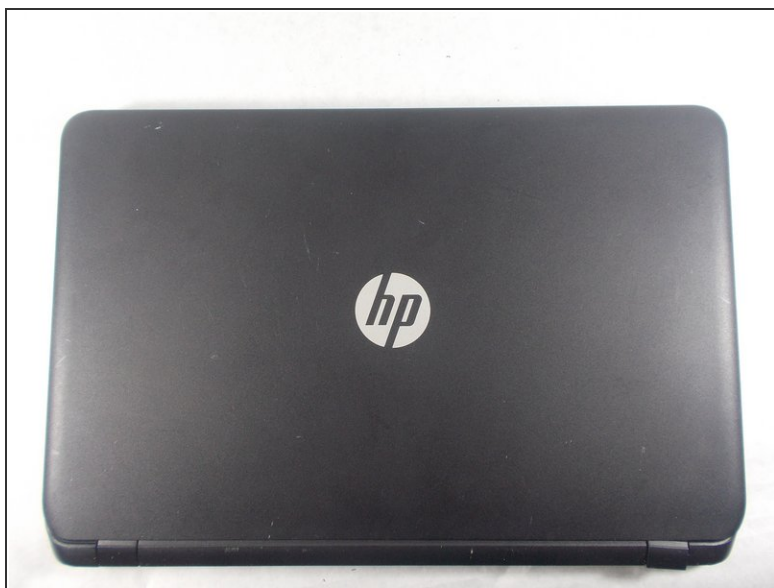
- [Spudger](#) (1)
 - [Phillips #1 Screwdriver](#) (1)
-

Step 1 — Battery



- Turn power off using the power button located in the top left corner of the keyboard. Press and hold the power button for 3 seconds until it turns off.

Step 2



- Close the laptop and flip it over so that the HP cover logo is on the underside of the laptop.

Step 3



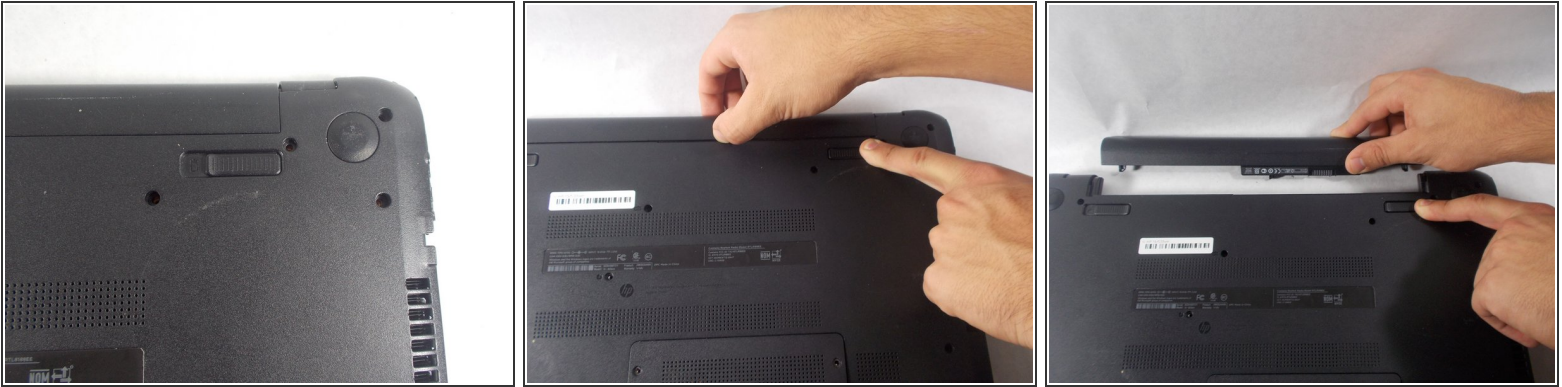
- Locate the battery and the two switches that release the battery when they are unlocked.

Step 4



- Slide the left switch to the right so that the icon of a locked padlock is no longer visible and the icon of an unlocked padlock is now visible.

Step 5



- With your left hand, slide the right switch to the left and hold it in place. This will unlock the battery and allow you to easily slide it out of its port.
- While holding the switch in place, use your right hand to gently remove the battery from its port.

Step 6 — Palm Rest Disassembly



- Remove the thirteen 7 mm PH1 Phillips head screws from the bottom of the laptop.

Step 7



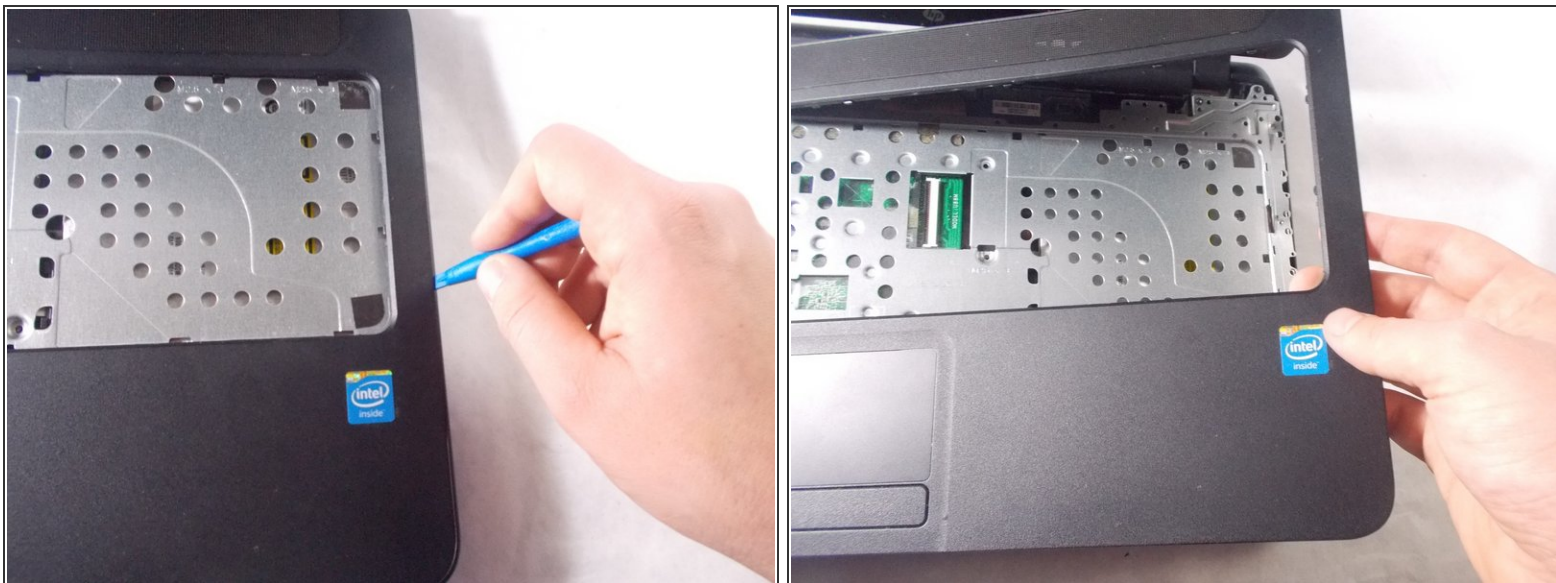
- Pry up and detach keyboard.

Step 8



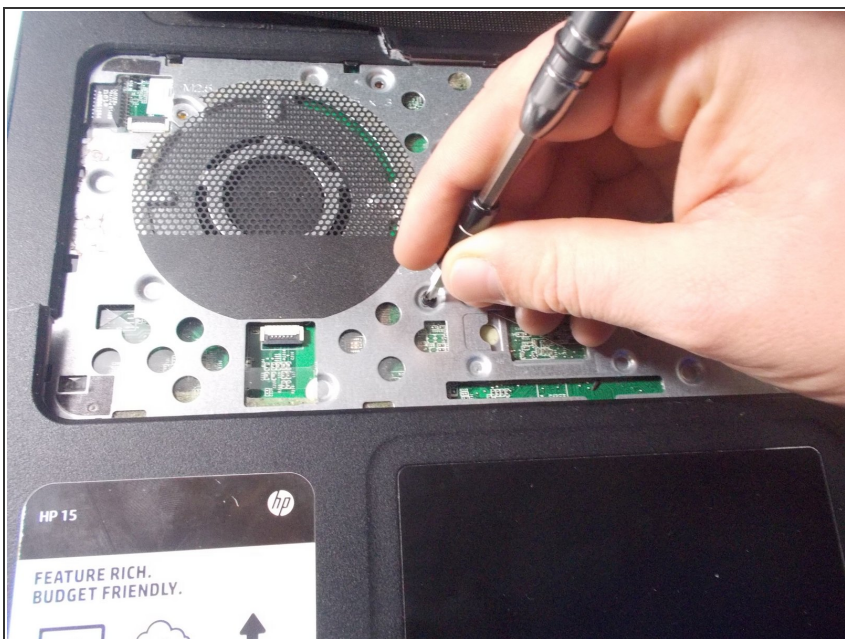
- Remove the keyboard connection from the laptop by flipping up the black tab on the ZIF connector.

Step 9



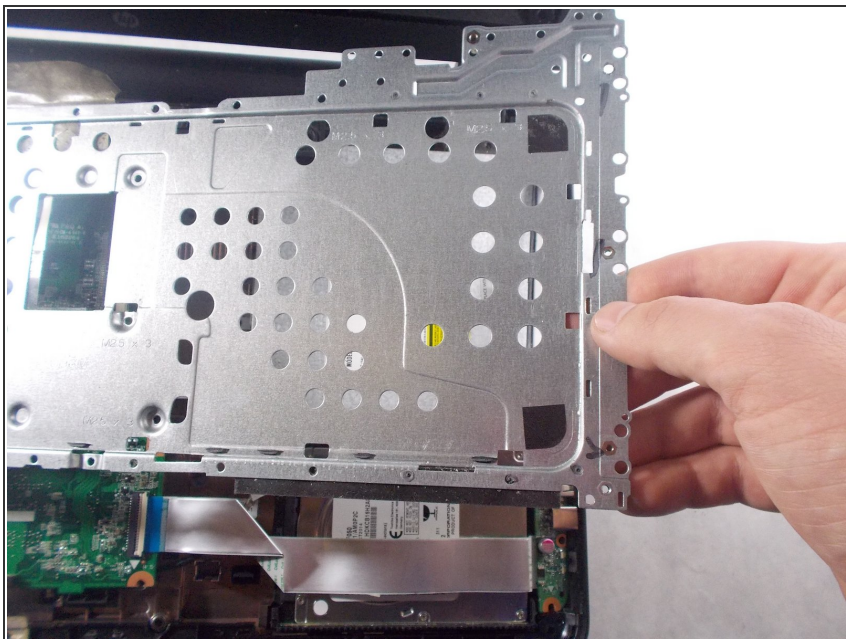
- Remove the palm rest using the blue spudger tool.

Step 10



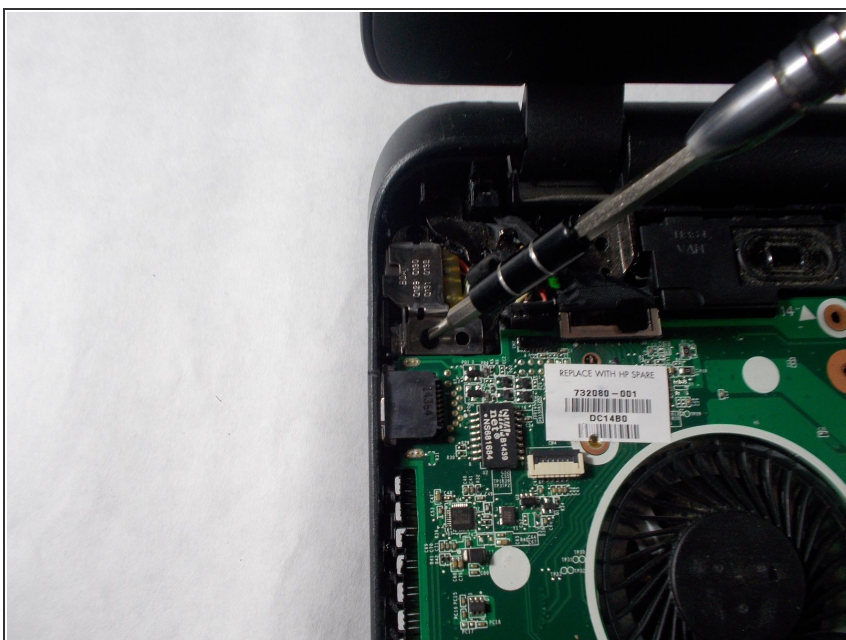
- Remove the five 3 mm PH1 Phillips head screws underneath keyboard.

Step 11



- Remove metal keyboard underlayerment.

Step 12 — Power Jack



- After removing the battery and the palm rest, remove the two 7 mm PH1 Phillips head screws holding in the small metal power jack holder.

Step 13



- Unplug the wired connection from the laptop to the power jack.
- Detach broken power jack using blue spudger.

To reassemble your device, follow these instructions in reverse order.